

Annex D1

Updated Baseline  
Conditions of the  
Landscape Resources

**Approved EIA report**

**2018 Baseline**

LR1



Shrubs and topography on Fat Tong Chau Hillside



Shrubs and topography on Fat Tong Chau Hillside

LR2



Trees and shrubs in TVB City of Tseung Kwan O Industrial Estate

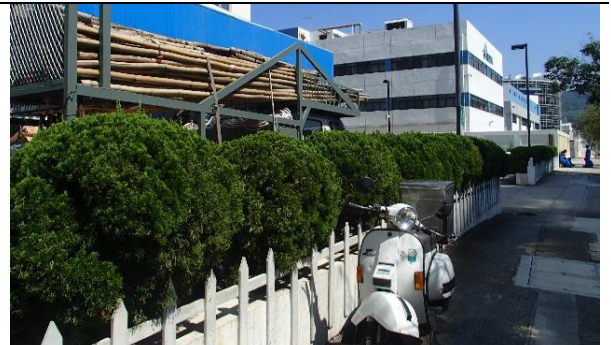


Trees and shrubs in TVB City of Tseung Kwan O Industrial Estate

LR3



Shrubs in Hong Kong Aircraft Engineering Building, TKO Industrial Estate



Shrubs in Hong Kong Aircraft Engineering Building, TKO Industrial Estate

LR4



Trees along Chun Wang Street



Trees along Chun Wang Street

Approved EIA report

2018 Baseline

LR5



Trees along Wan Po Road



Trees along Wan Po Road

LR6

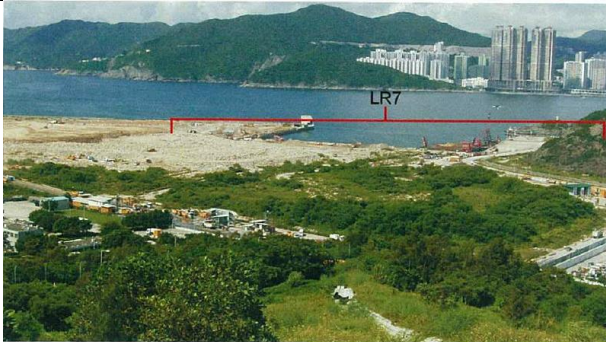


Drainage channel in TKO Area 137



Drainage channel in TKO Area 137

LR7

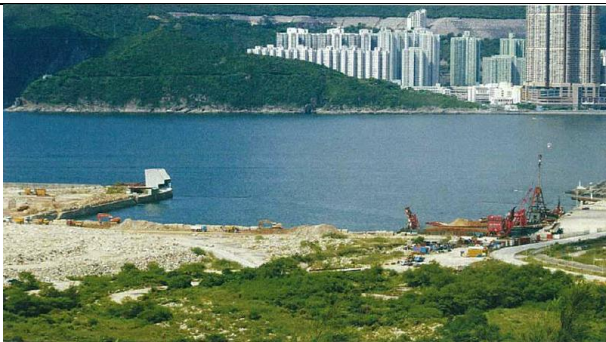


Trees in northern part of TKO Area 137



Trees in northern part of TKO Area 137

LR8



Coastal water east of TKO Area 137



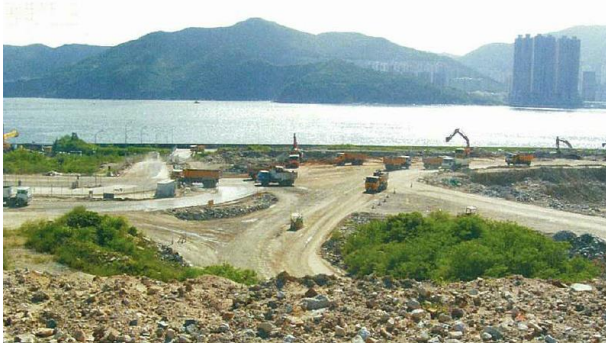
Coastal water east of TKO Area 137

---

**Approved EIA report**

**2018 Baseline**

LR9



Shrubs in southern part of TKO Area 137



Shrubs in southern part of TKO Area 137

---

LR10



Stream on Fat Tong Chau Hillside



Stream on Fat Tong Chau Hillside

---

LR11



Trees and shrubs along lower hillside of Tin Ha Shan



Trees and shrubs along lower hillside of Tin Ha Shan

---

**Approved EIA report**

**2018 Baseline**

LR12



Site office area of SENT Landfill



Site office area of SENT Landfill

LR13



Plantation and topography in South SENT Landfill



Plantation and topography in South SENT Landfill

LR14



Plantation and topography in South-East SENT Landfill



Access road and topography in South-East SENT Landfill

---

**Approved EIA report**

**2018 Baseline**

LR15



Plantation and topography in West SENT Landfill



Plantation and topography in West SENT Landfill

---

LR16



Grassland and topography in SENT Landfill



Shrubs and topography in SENT Landfill

---

LR17



Man-made slope with shrubs and grass in SENT Landfill



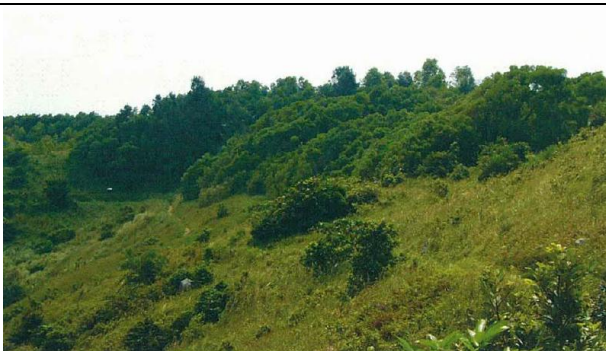
Man-made slope with shrubs and grass in SENT Landfill

---

LR18 NOT USED

---

LR19







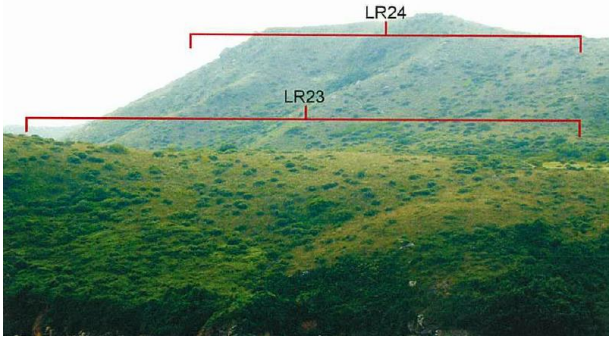
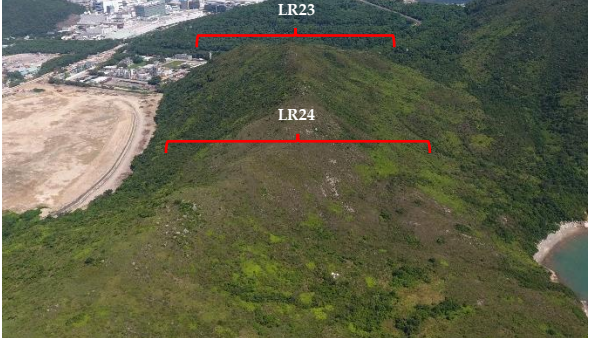


Trees, shrubs and topography in Ha Shan Tuk



Trees, shrubs and topography in Ha Shan Tuk

---

	Approved EIA report	2018 Baseline
LR20	 <p style="text-align: center;">Shrubs and topography in Tin Ha Shan</p>	 <p style="text-align: center;">Shrubs and topography in Tin Ha Shan</p>
LR21	 <p style="text-align: center;">Streams in Tin Ha Shan</p>	 <p style="text-align: center;">Streams in Tin Ha Shan</p>
LR22	 <p style="text-align: center;">Trees, shrubs and topography in Tin Ha Au</p>	 <p style="text-align: center;">Trees, shrubs and topography in Tin Ha Au</p>
LR23, LR24	 <p style="text-align: center;">LR23 - Shrubs and Topography in Lower ridge east of TKO Area 137 LR24 - Grass, shrubs and topography on upper ridge east of TKO Area 137</p>	 <p style="text-align: center;">LR23 - Shrubs and Topography in Lower ridge east of TKO Area 137 LR24 - Grass, shrubs and topography on upper ridge east of TKO Area 137</p>

---

Approved EIA report

2018 Baseline

LR25



Sandy shore south of ridge east of TKO Area 137



Sandy shore south of ridge east of TKO Area 137

LR26



Streams in Tin Ha Au



Streams in Tin Ha Au

LR27

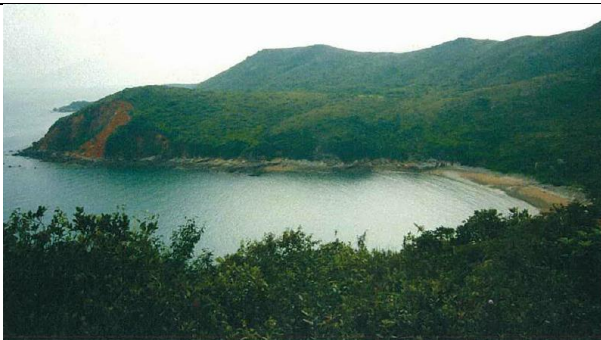


Sandy shore off Tin Ha Au



Sandy shore off Tin Ha Au

LR28



Coastal water off Tin Ha Au



Coastal water off Tin Ha Au