

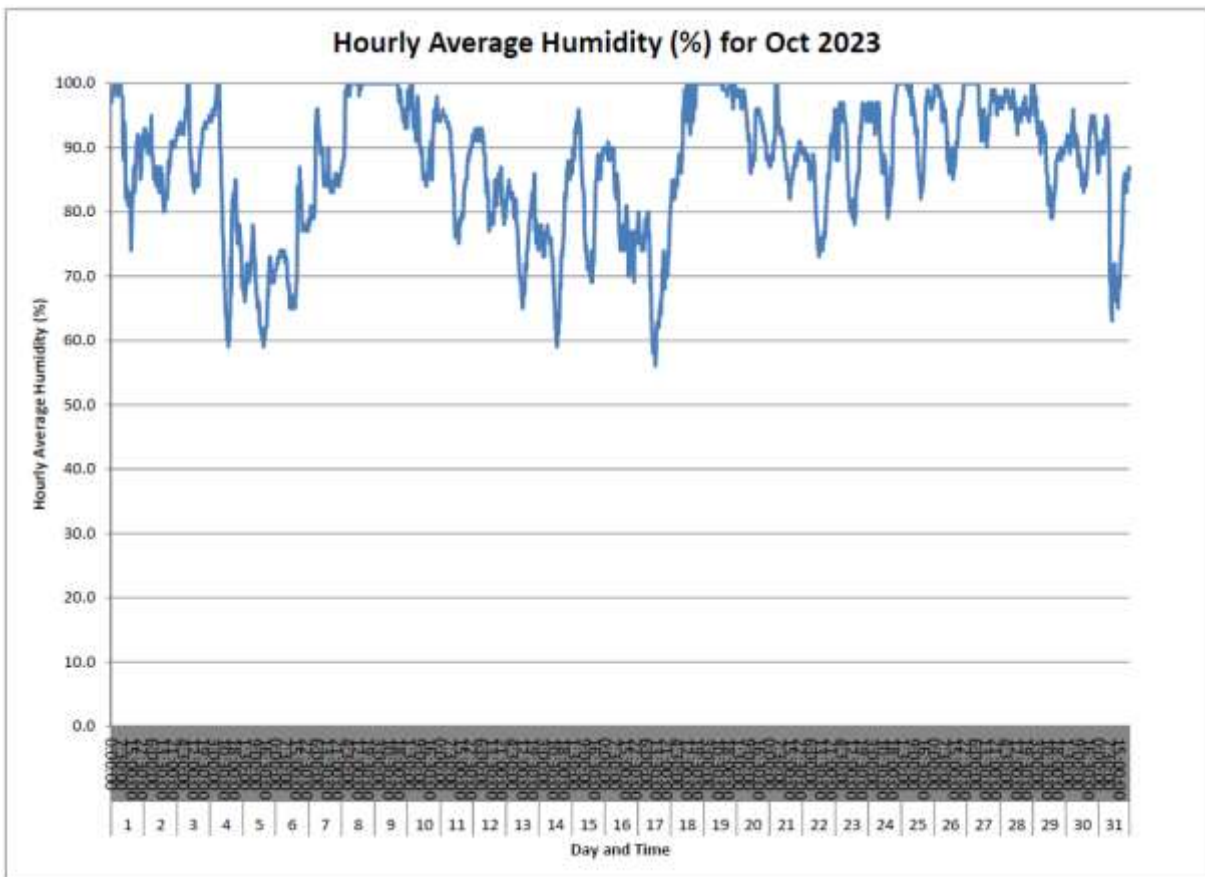
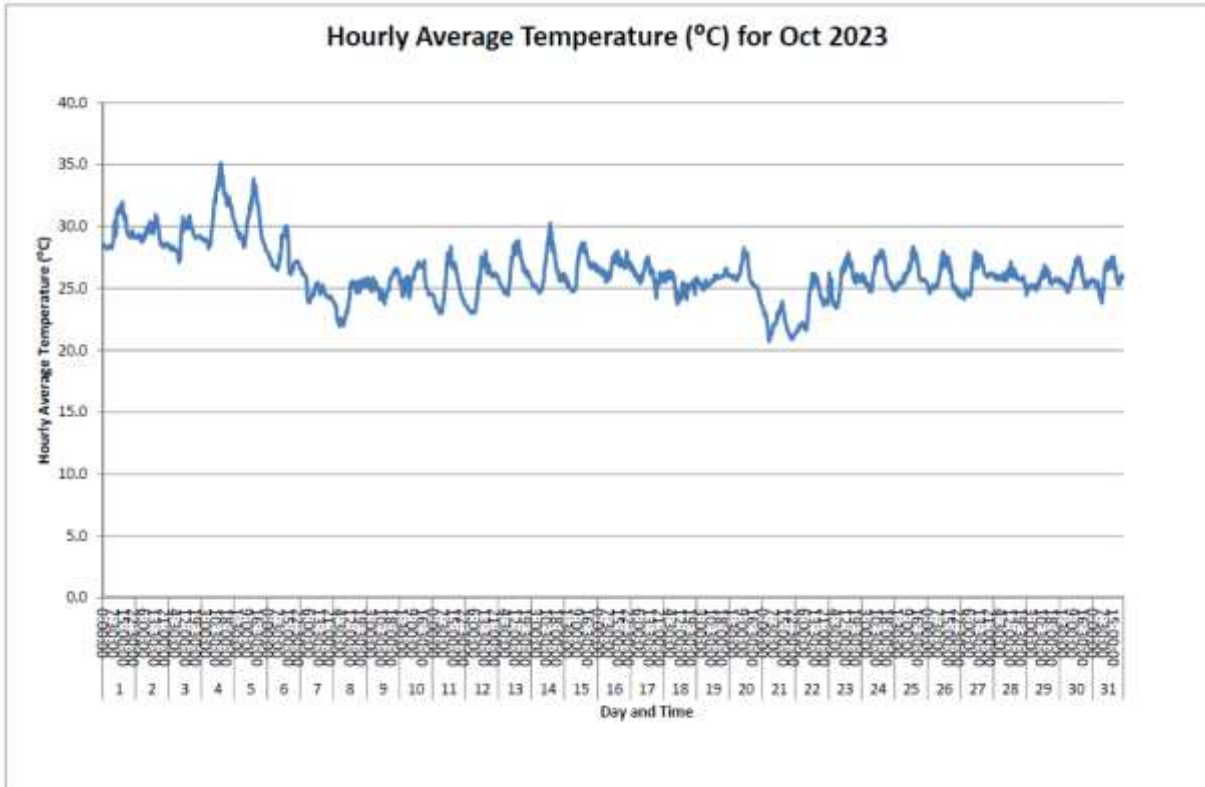


ANNEX D3

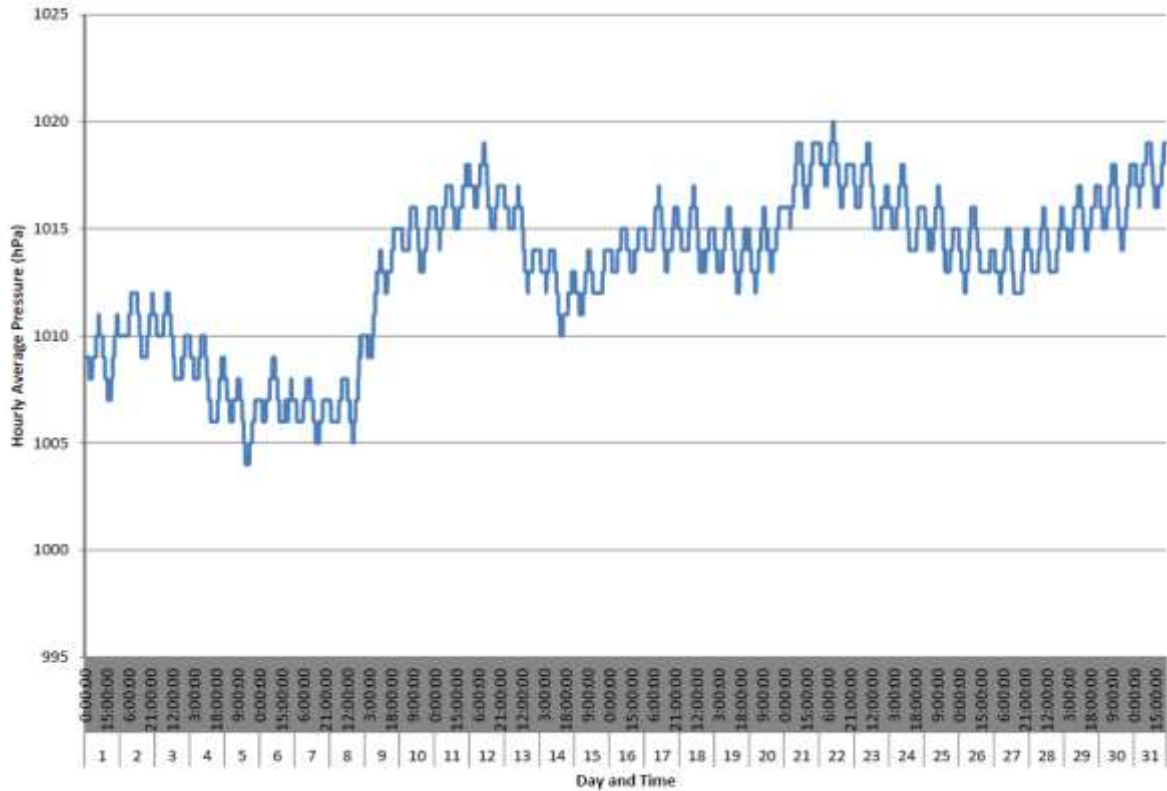
METEOROLOGICAL DATA

ANNEX D3 METEOROLOGICAL DATA

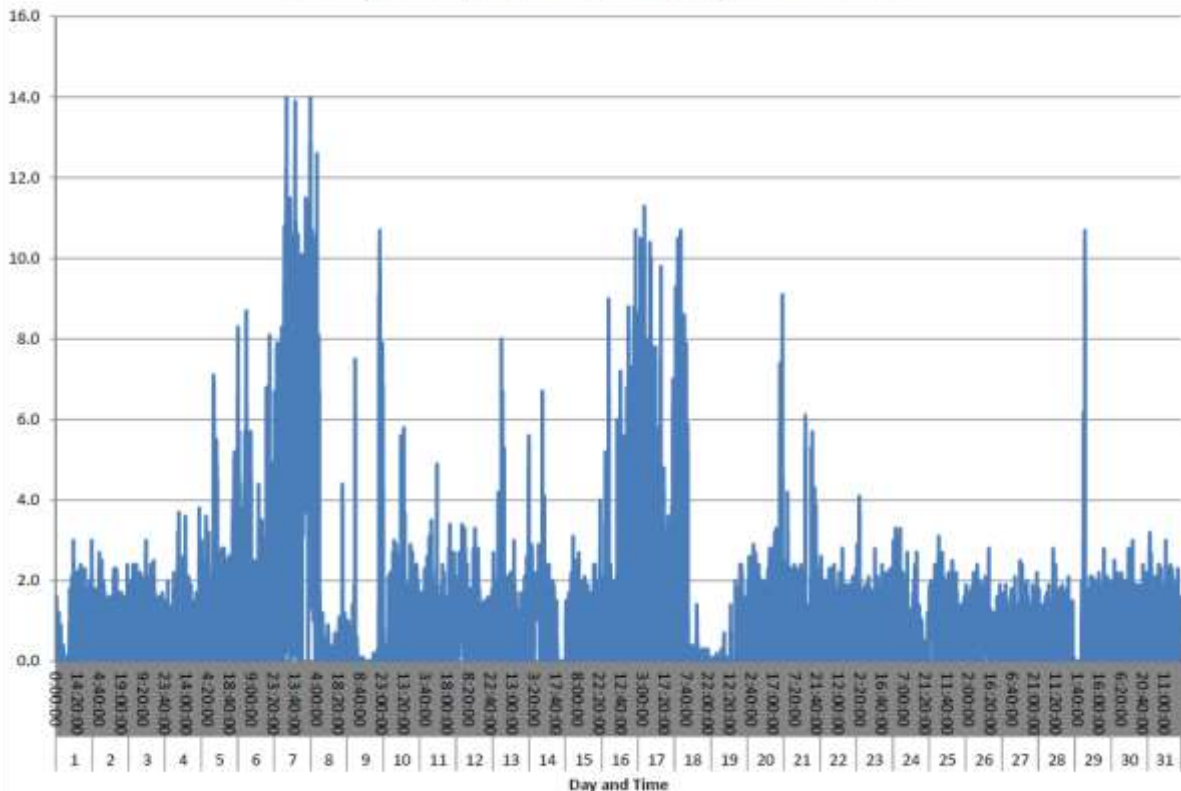
OCTOBER 2023



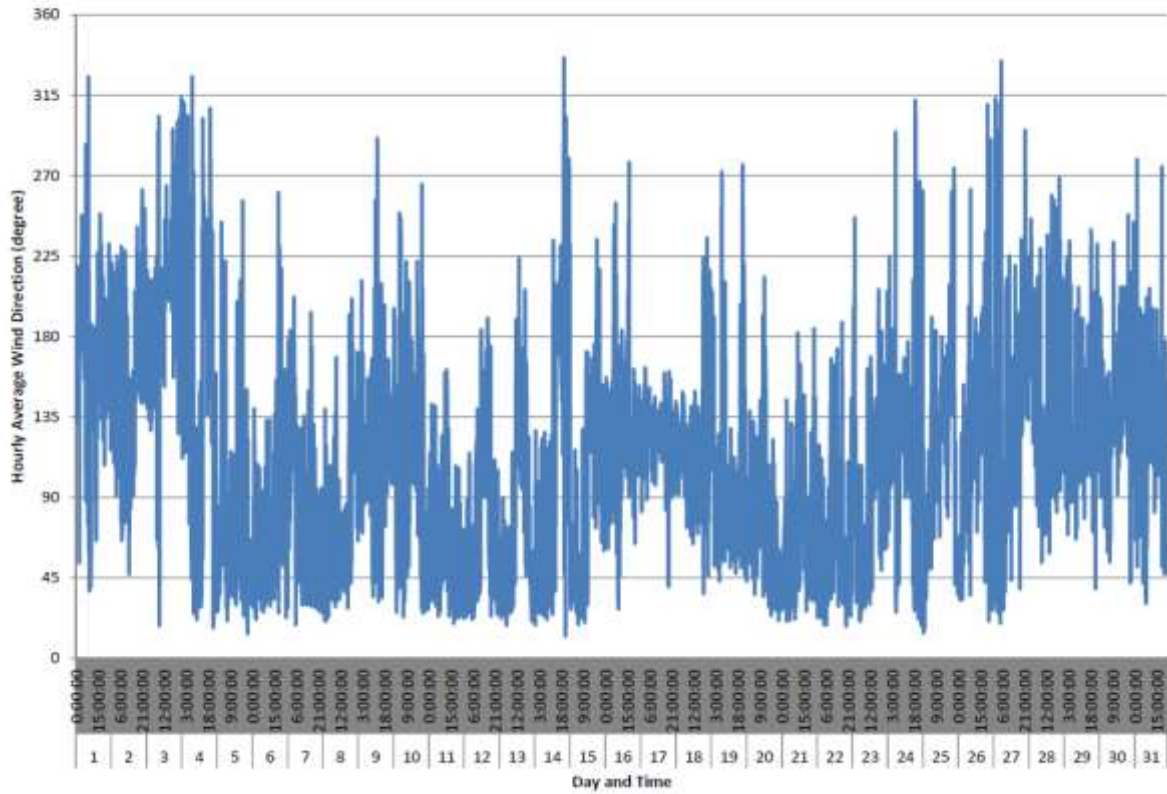
Hourly Average Pressure (hPa) for Oct 2023



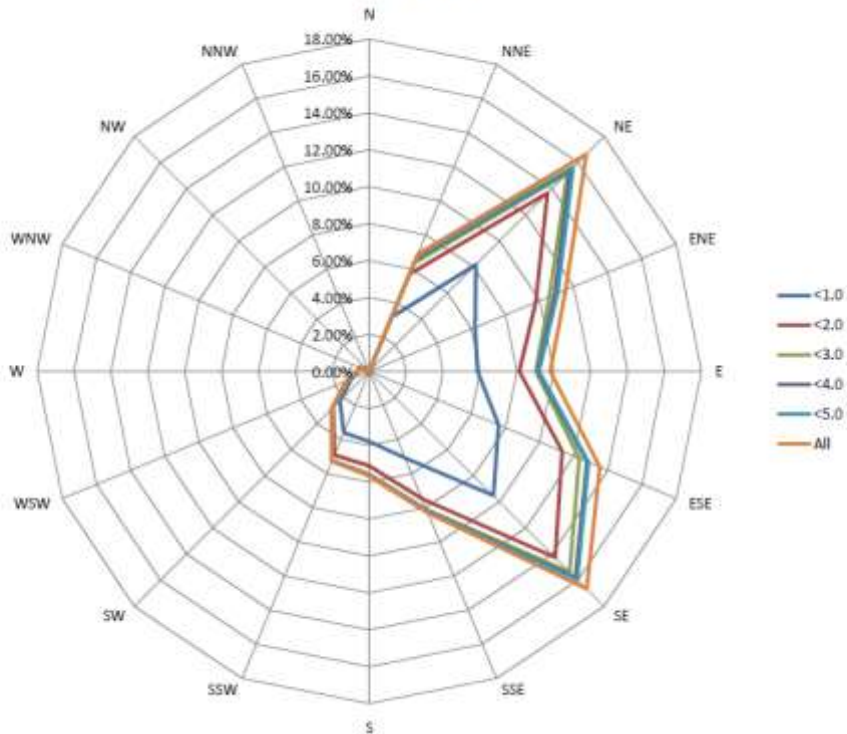
Hourly Average Wind Speed (m/s) for Oct 2023

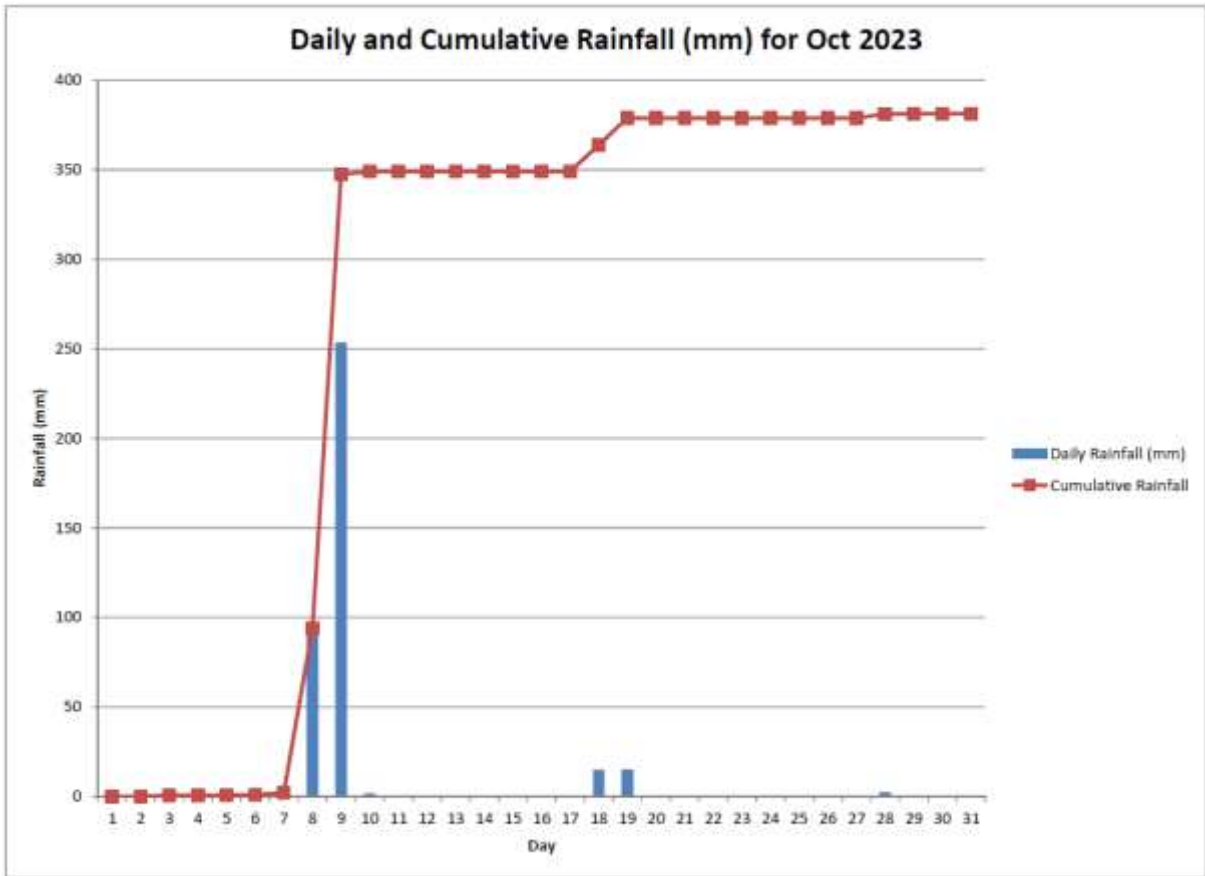


Hourly Average Wind Direction (degree) for Oct 2023

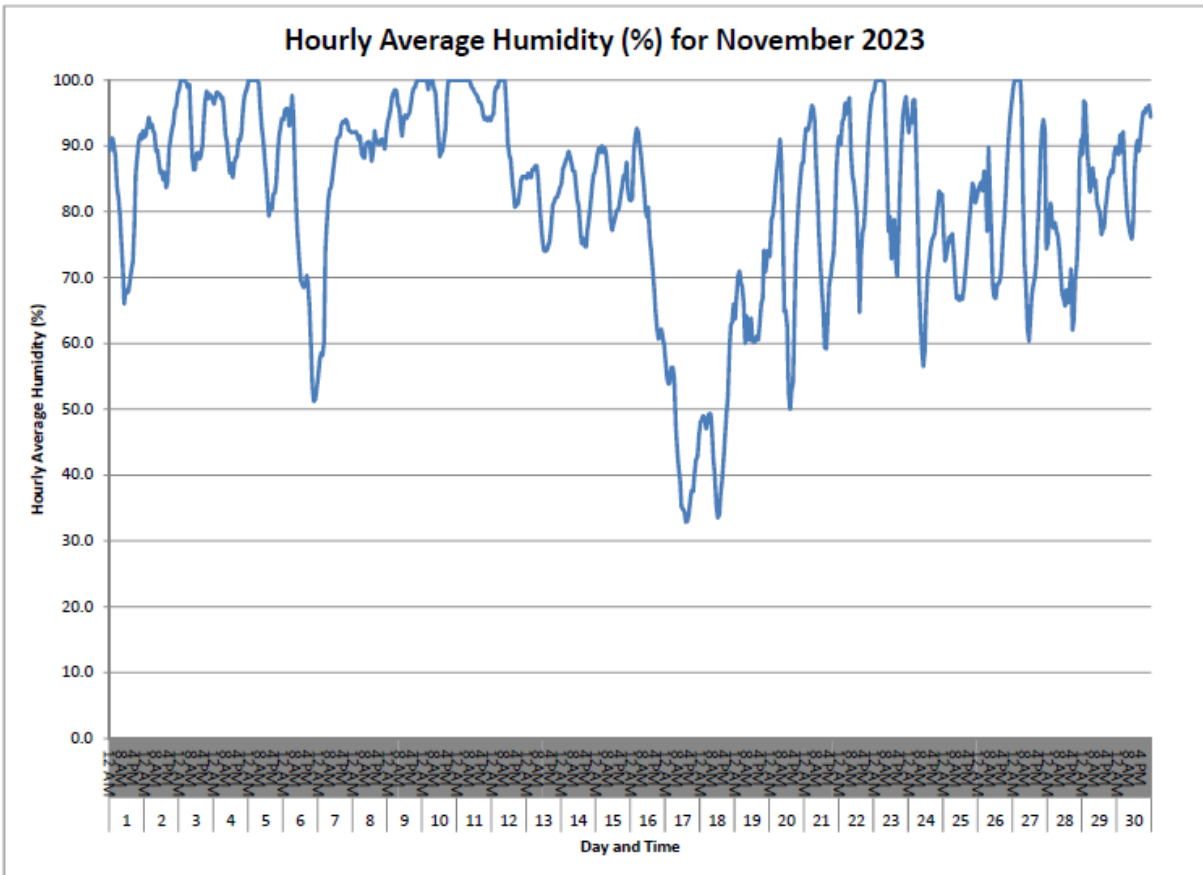
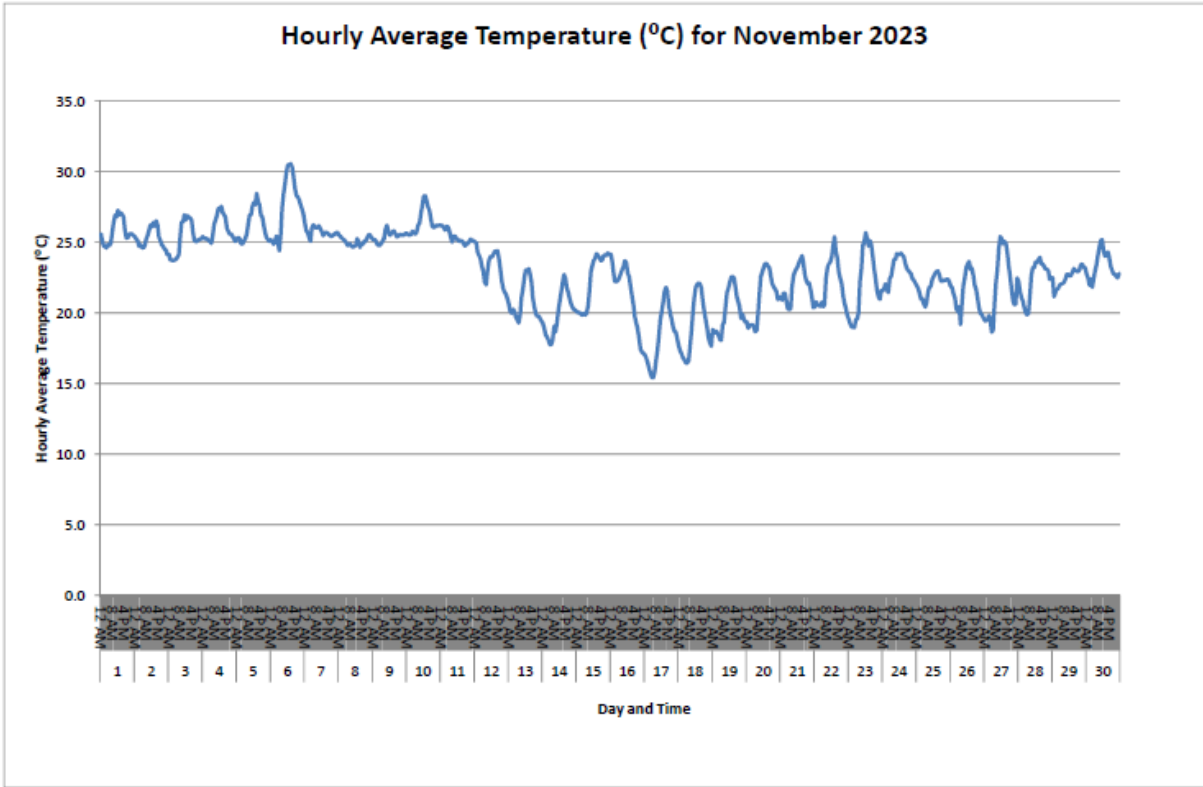


Wind Rose for Oct 2023

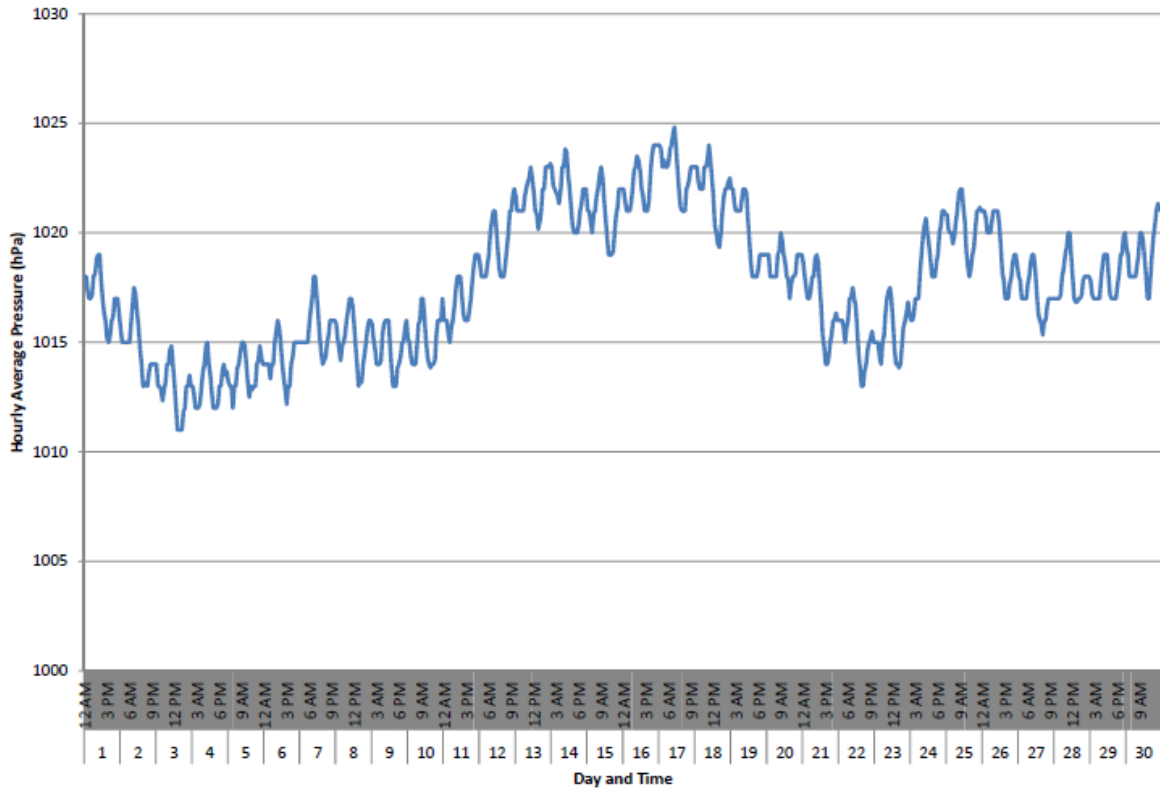




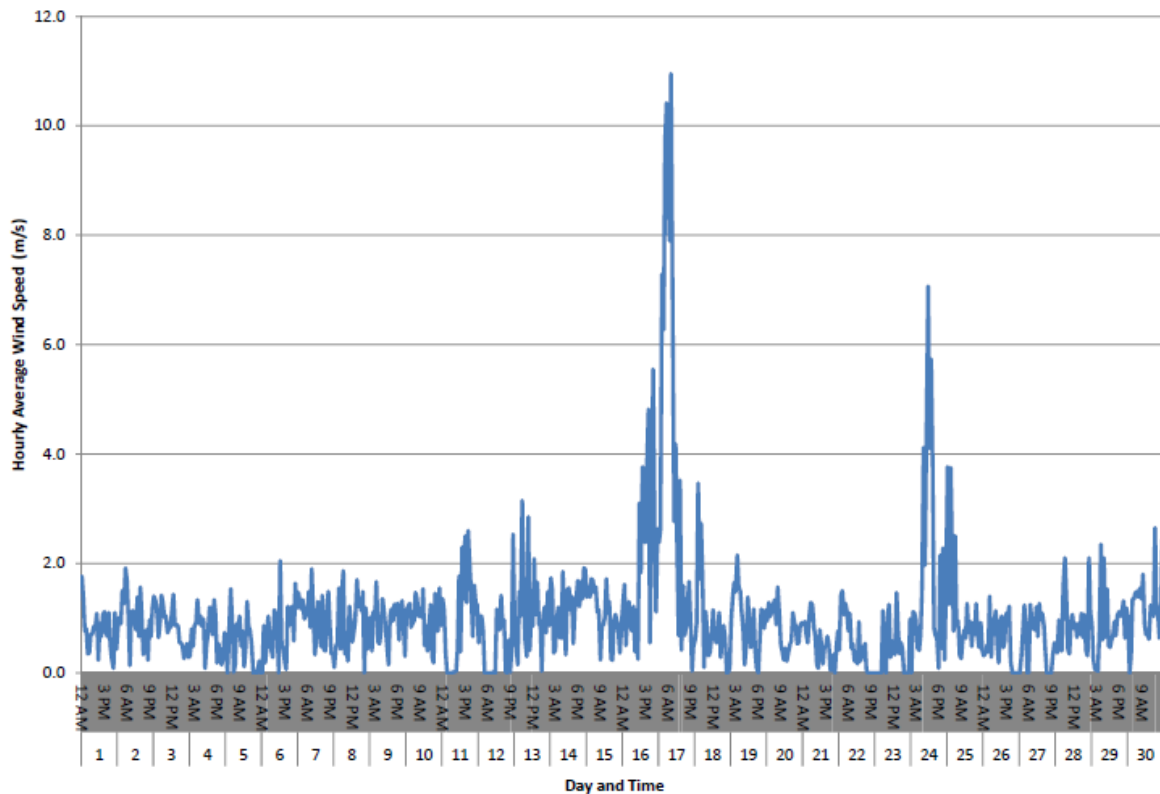
NOVEMBER 2023



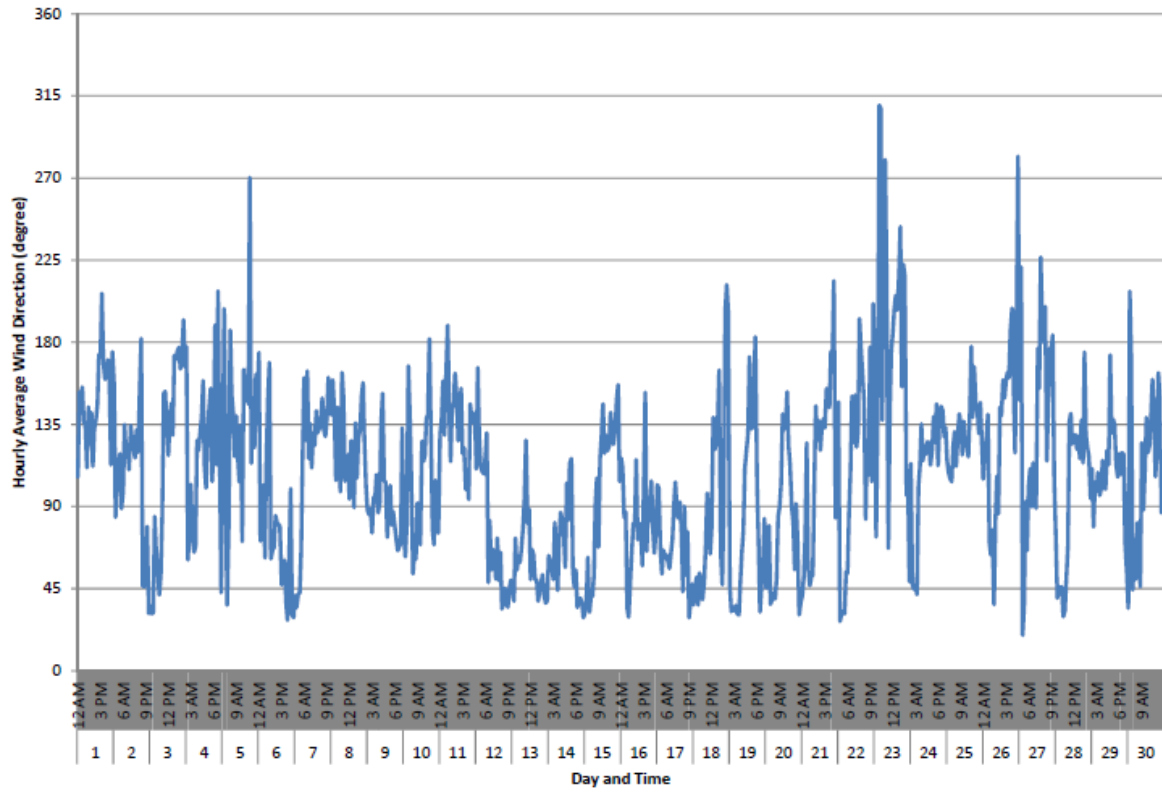
Hourly Average Pressure (hPa) for November 2023



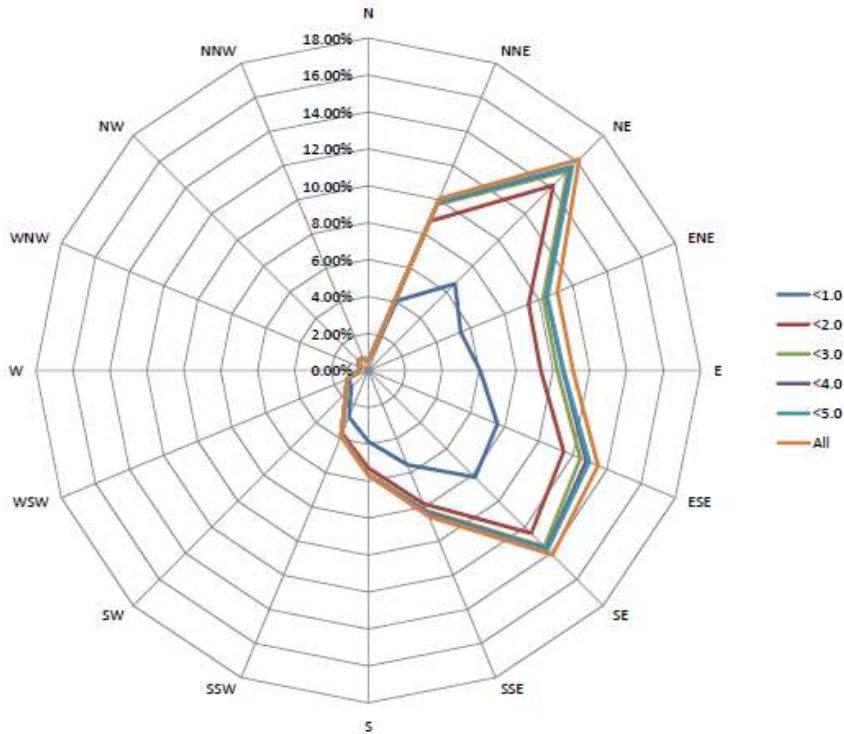
Hourly Average Wind Speed (m/s) for November 2023



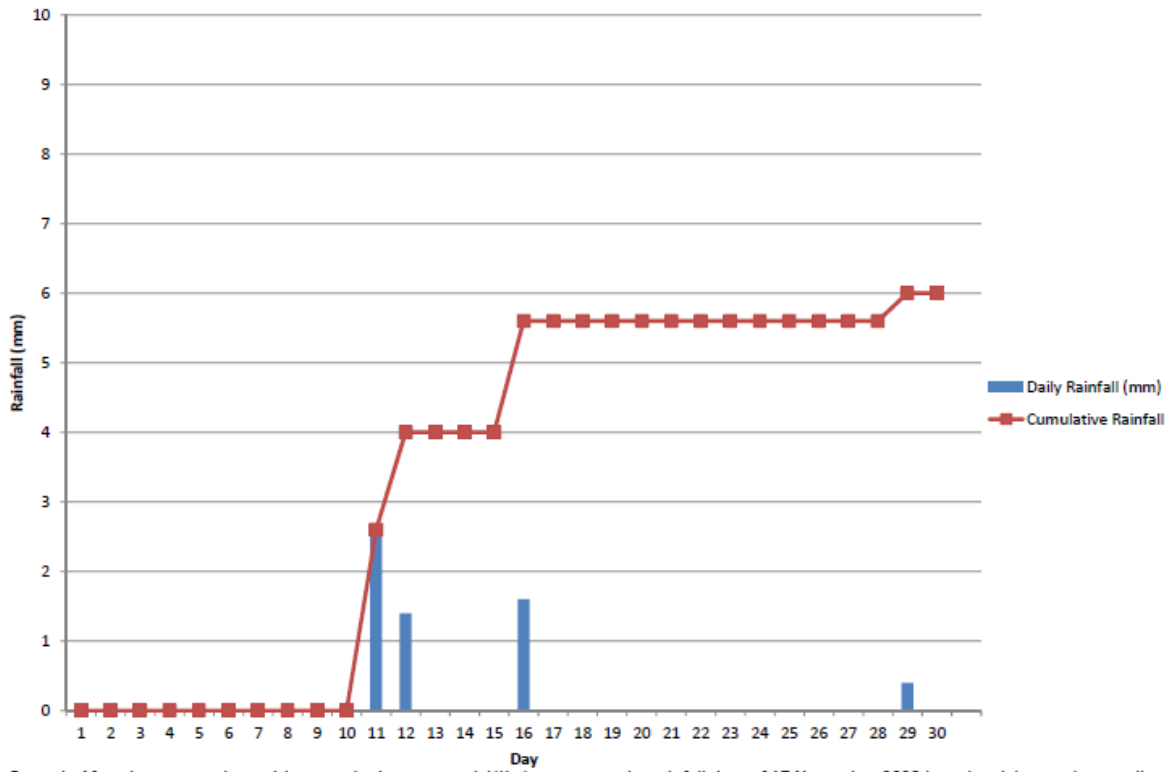
Hourly Average Wind Direction (degree) for November 2023



Wind Rose for November 2023

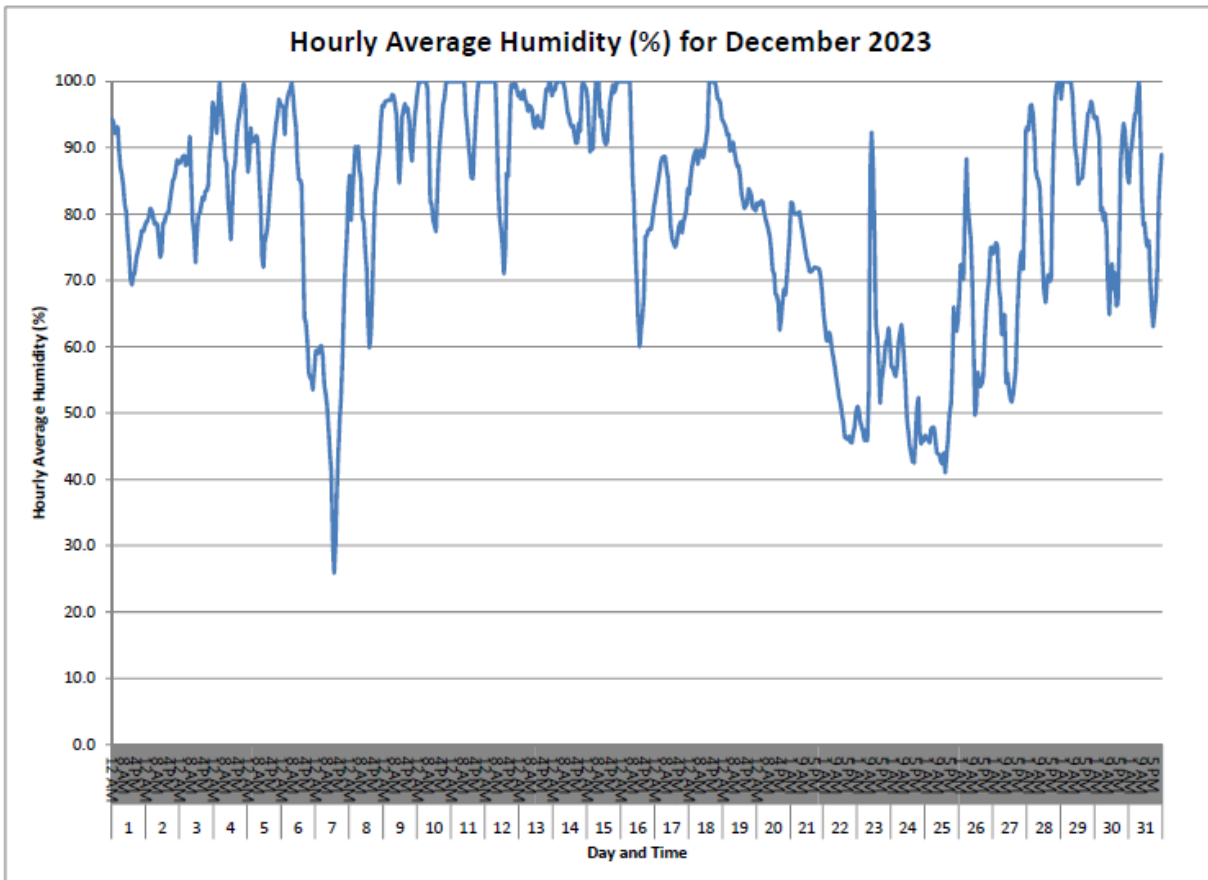
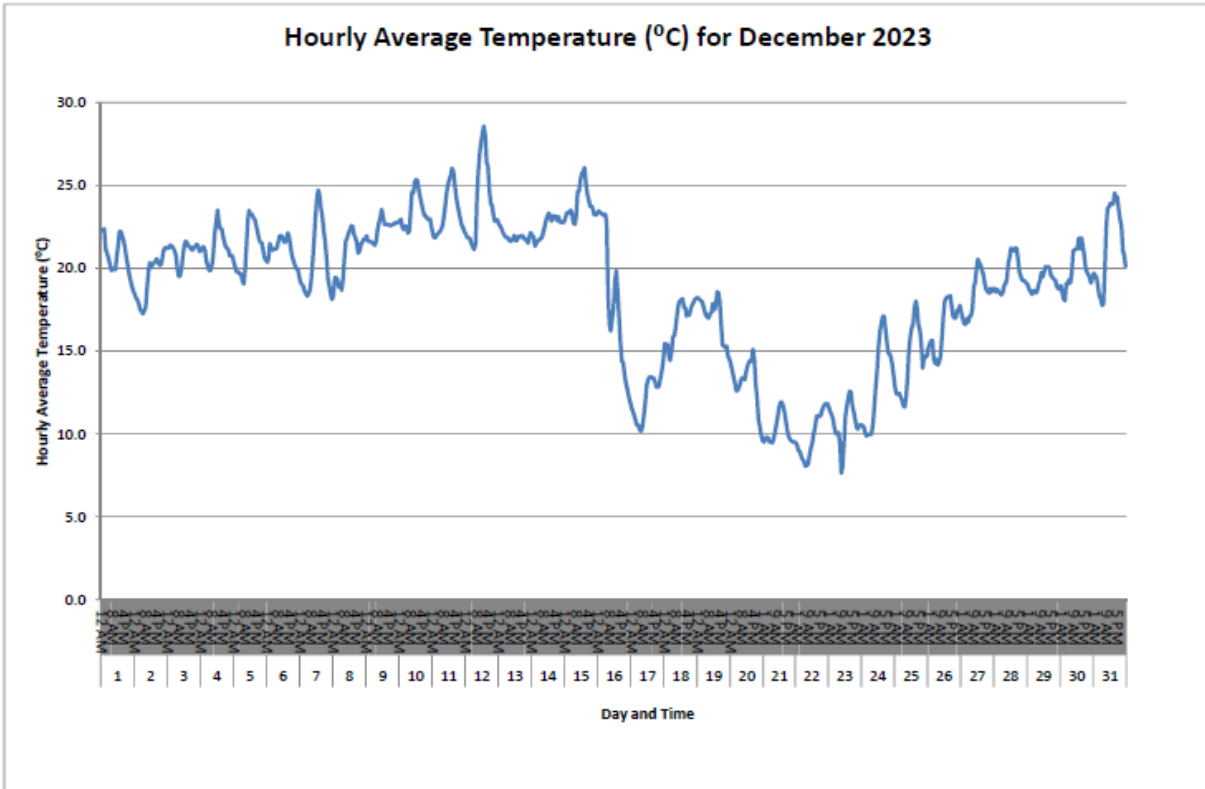


Daily and Cumulative Rainfall (mm) for November 2023

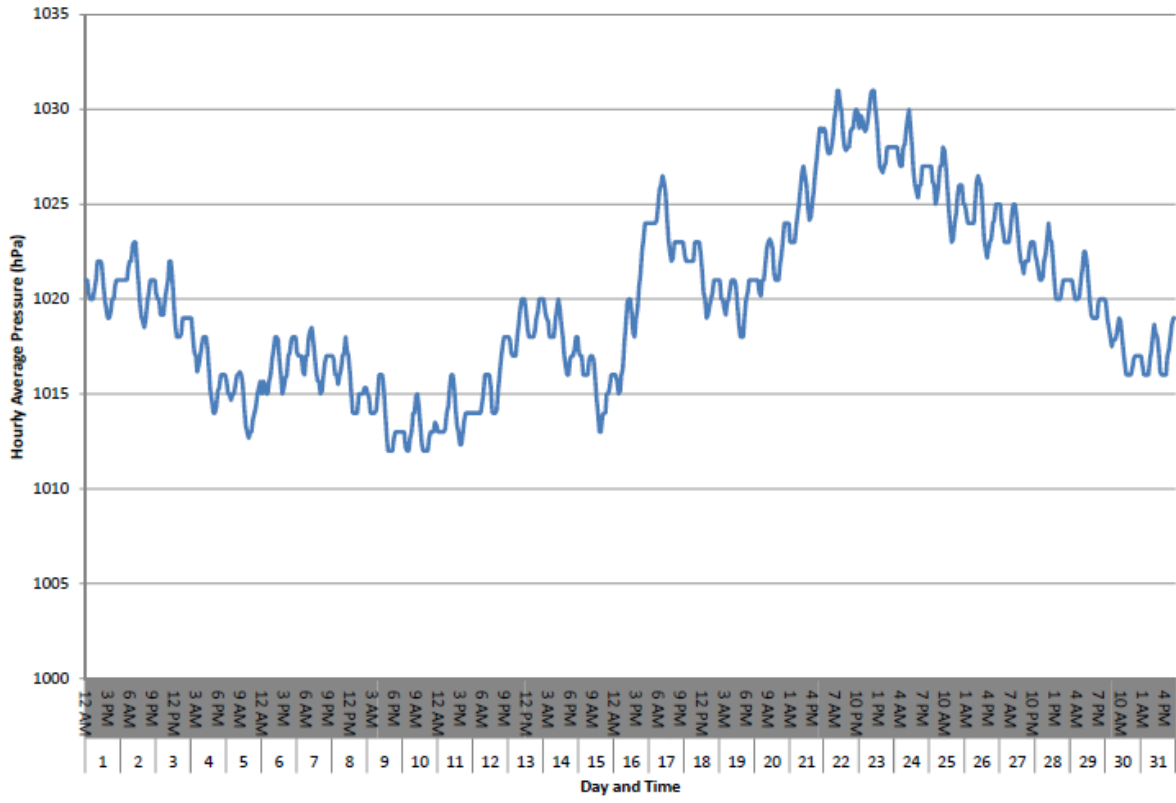


Remark: After data comparison with manual rain gauge and HK observatory , the rainfall data of 17 November 2023 is omitted due to abnormality

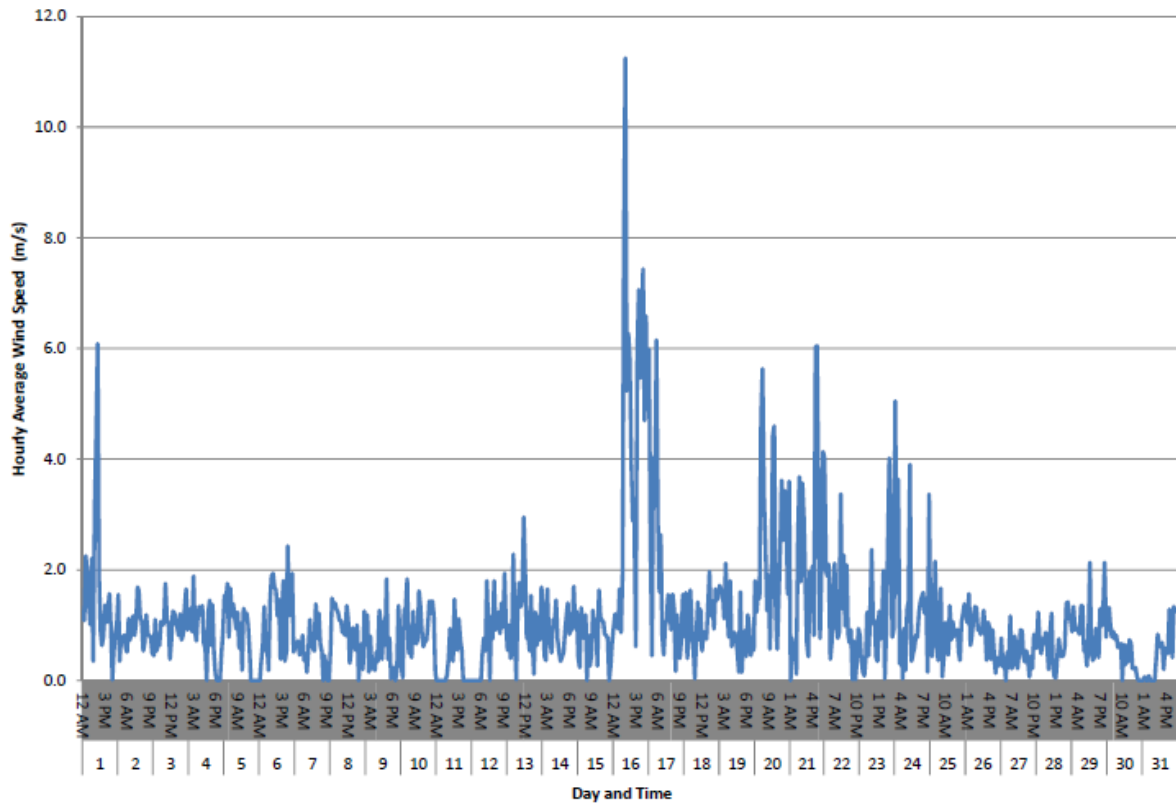
DECEMBER 2023



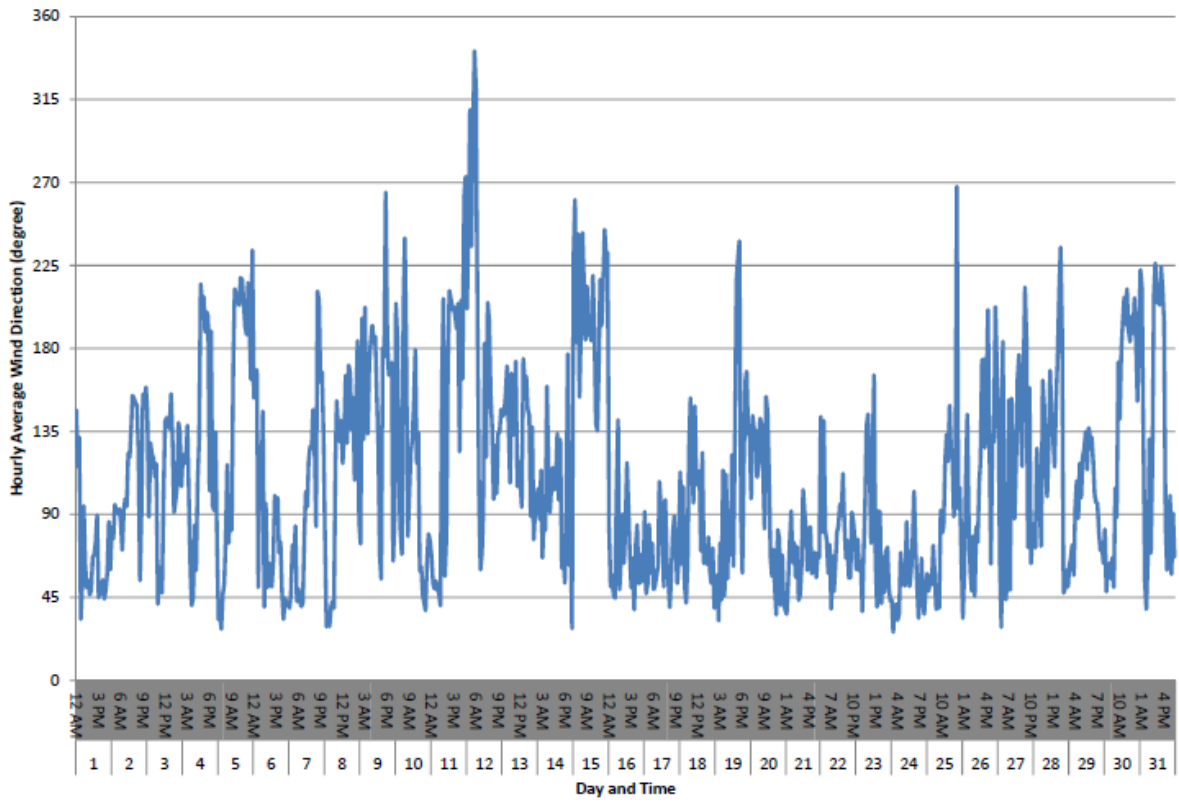
Hourly Average Pressure (hPa) for December 2023



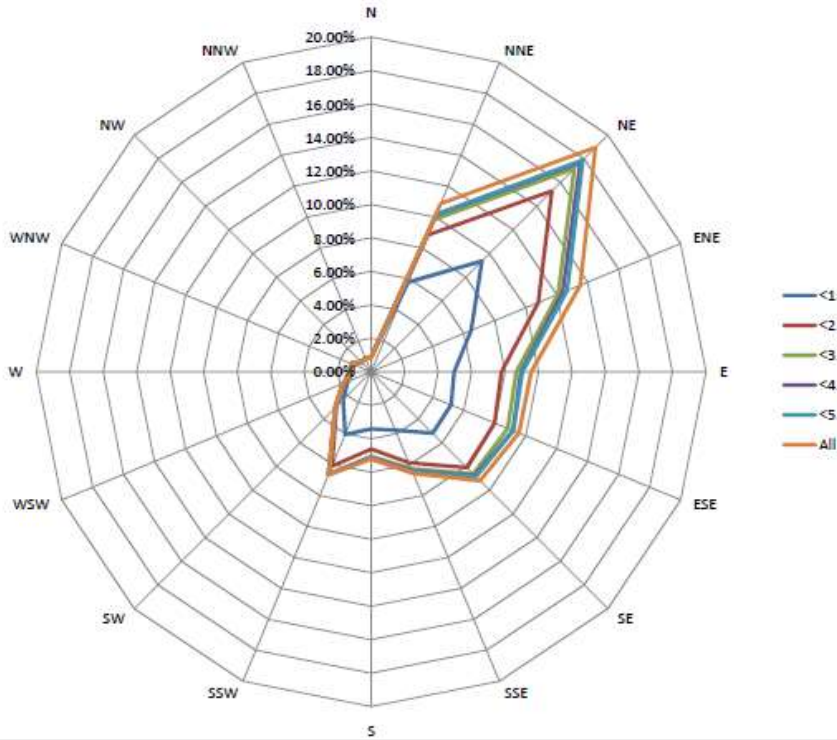
Hourly Average Wind Speed (m/s) for December 2023



Hourly Average Wind Direction (degree) for December 2023



Wind Rose for December 2023



Daily and Cumulative Rainfall (mm) for December 2023

