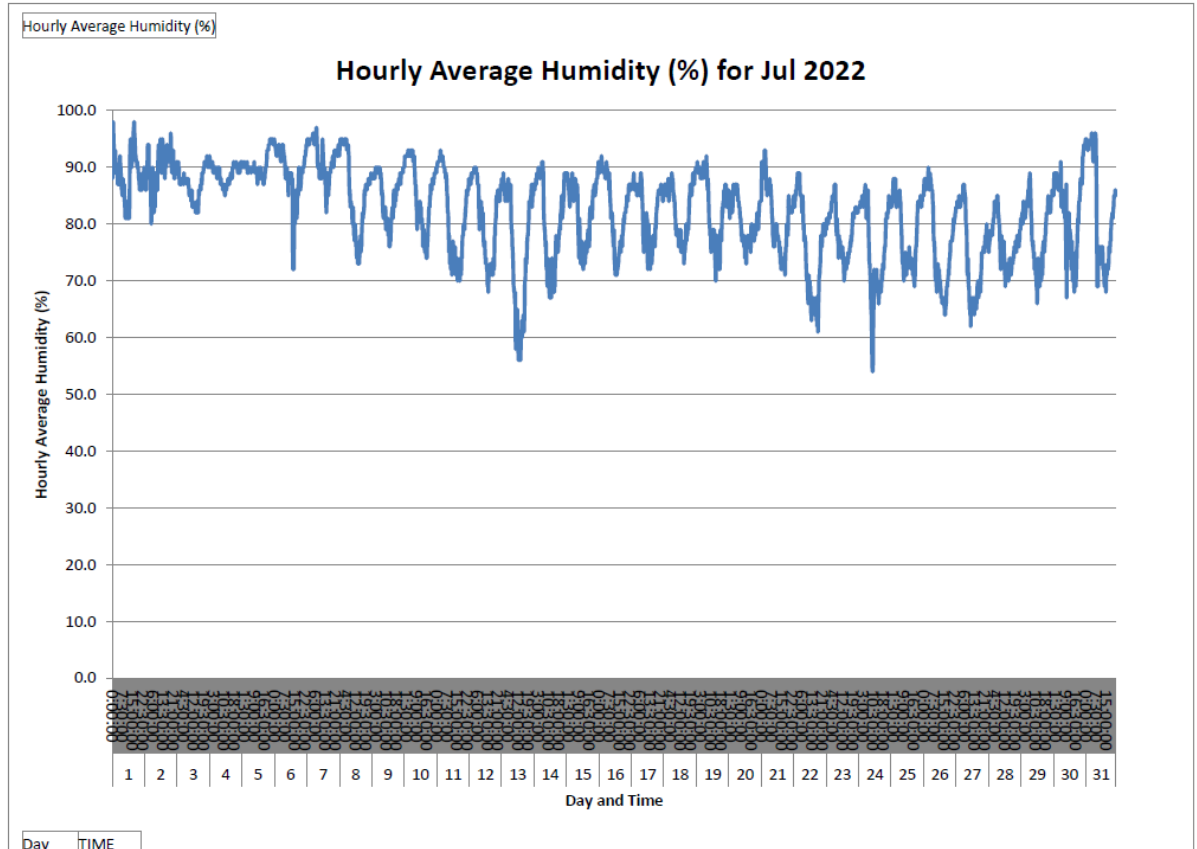
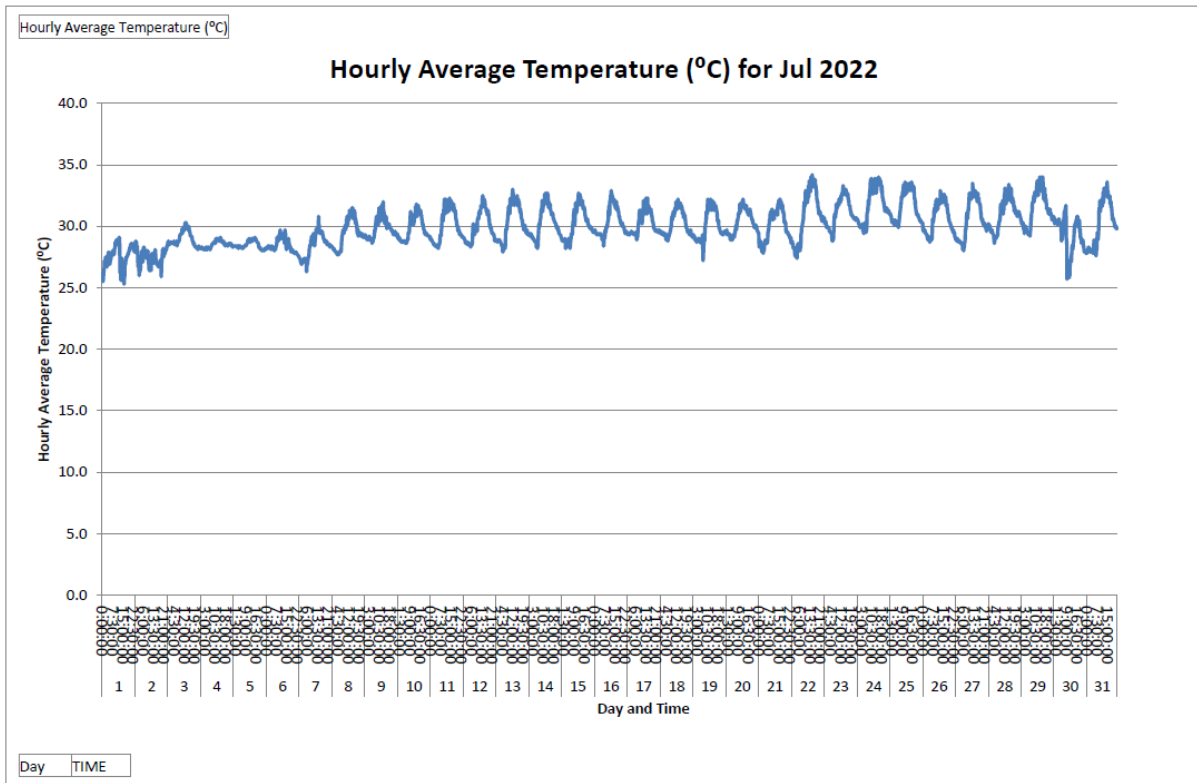


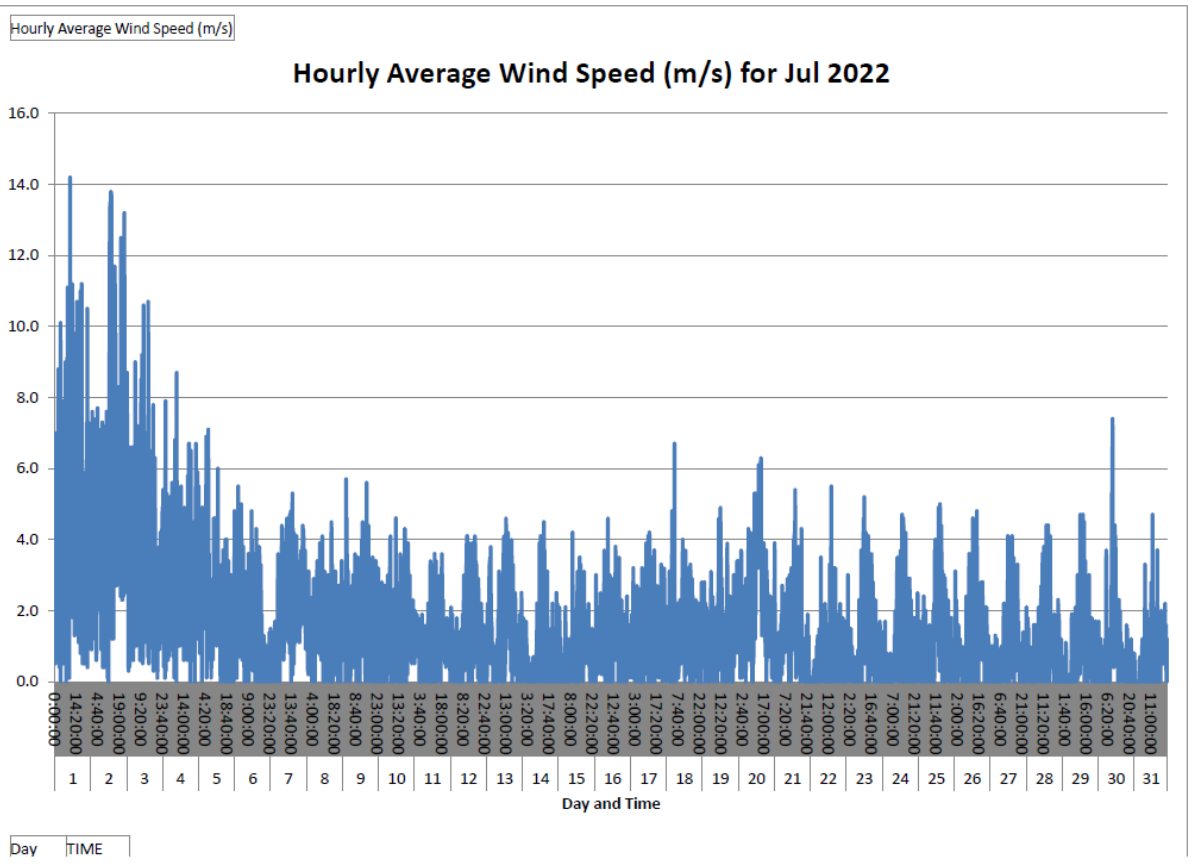
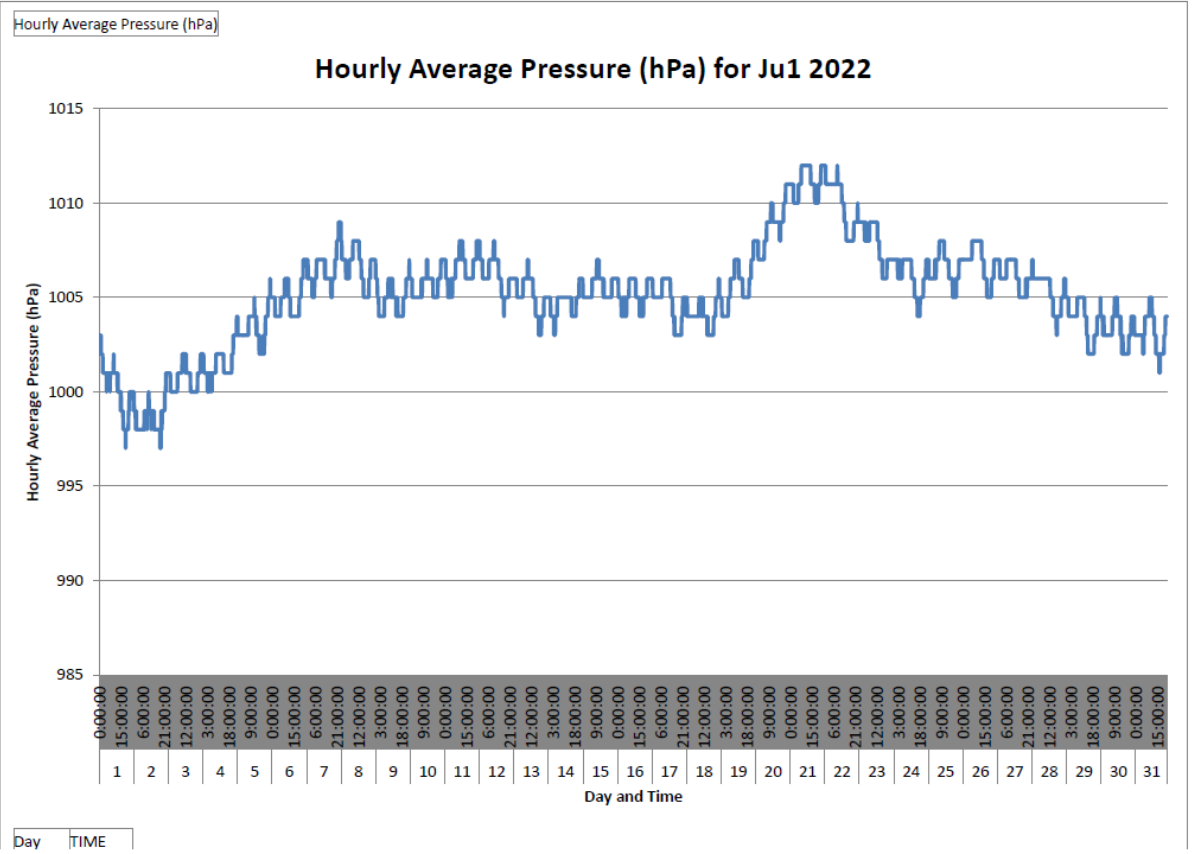
Annex D3

Meteorological Data

Annex D3 Meteorological Data

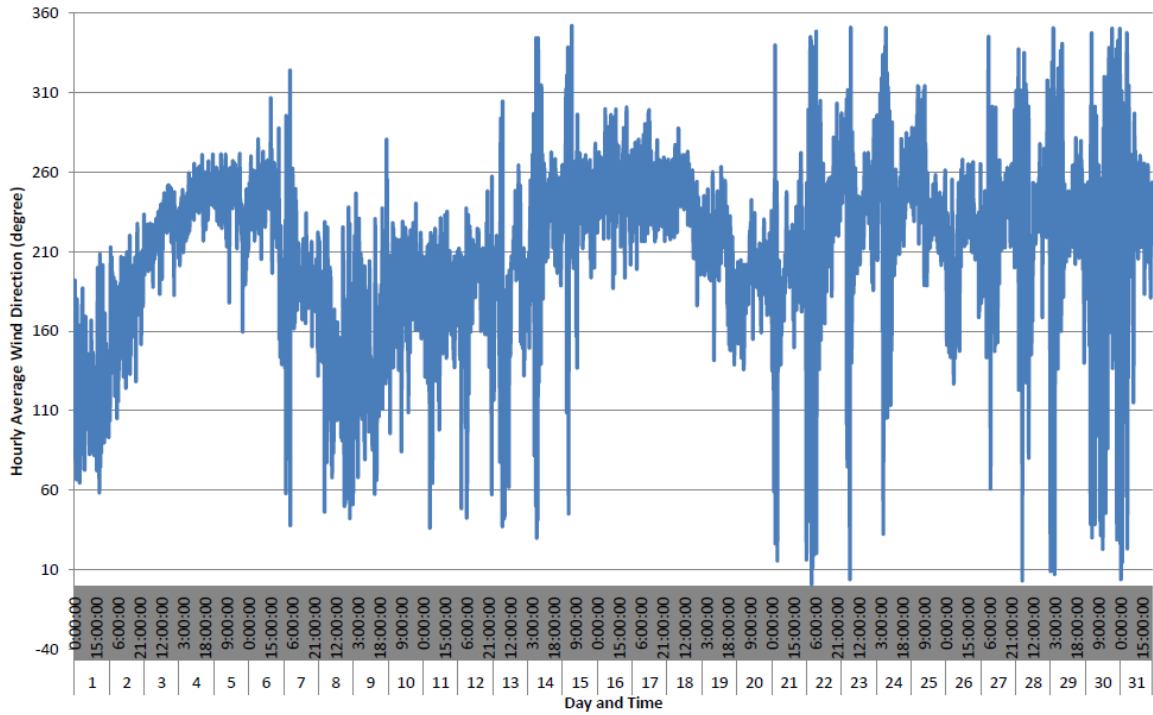
July 2022





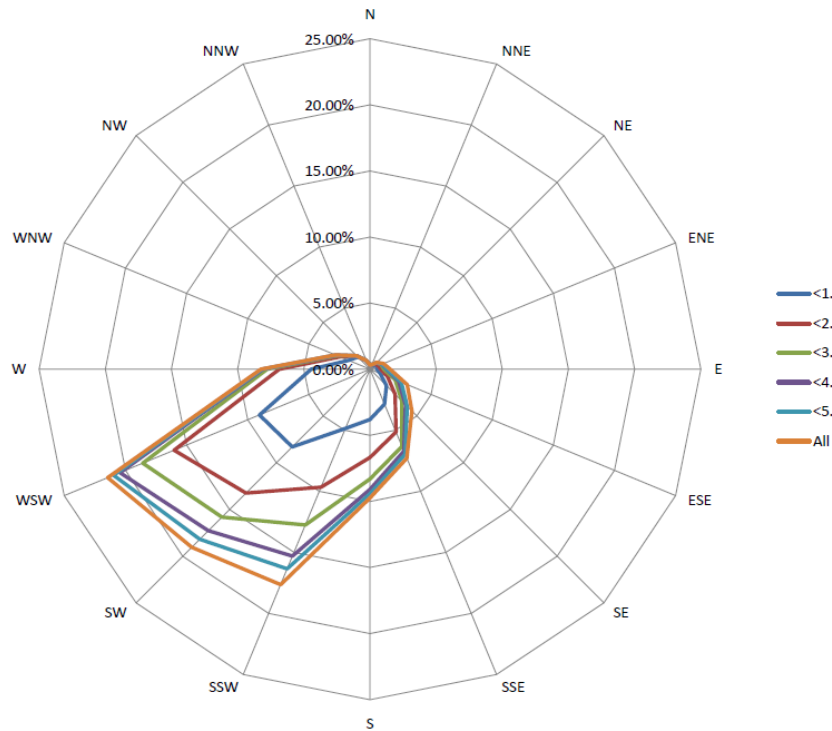
Hourly Average Wind Direction (degree)

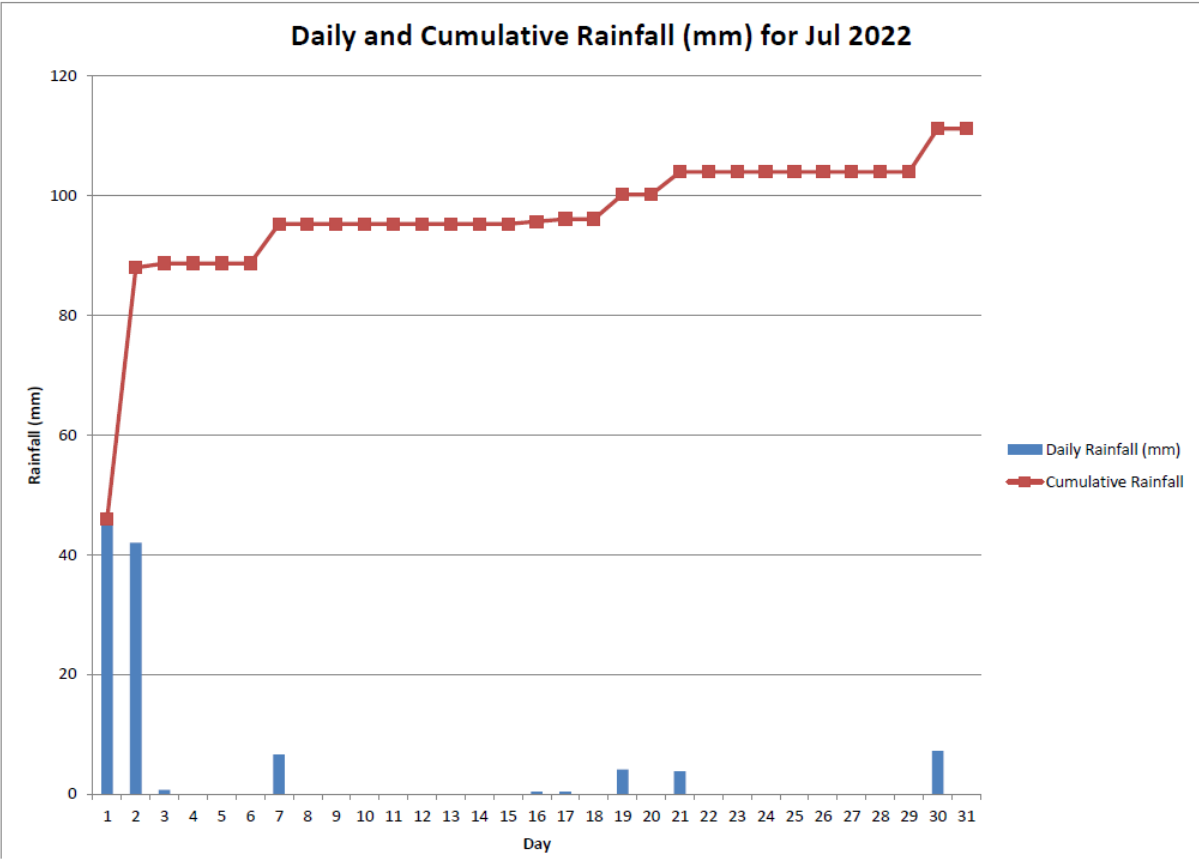
Hourly Average Wind Direction (degree) for Jul 2022



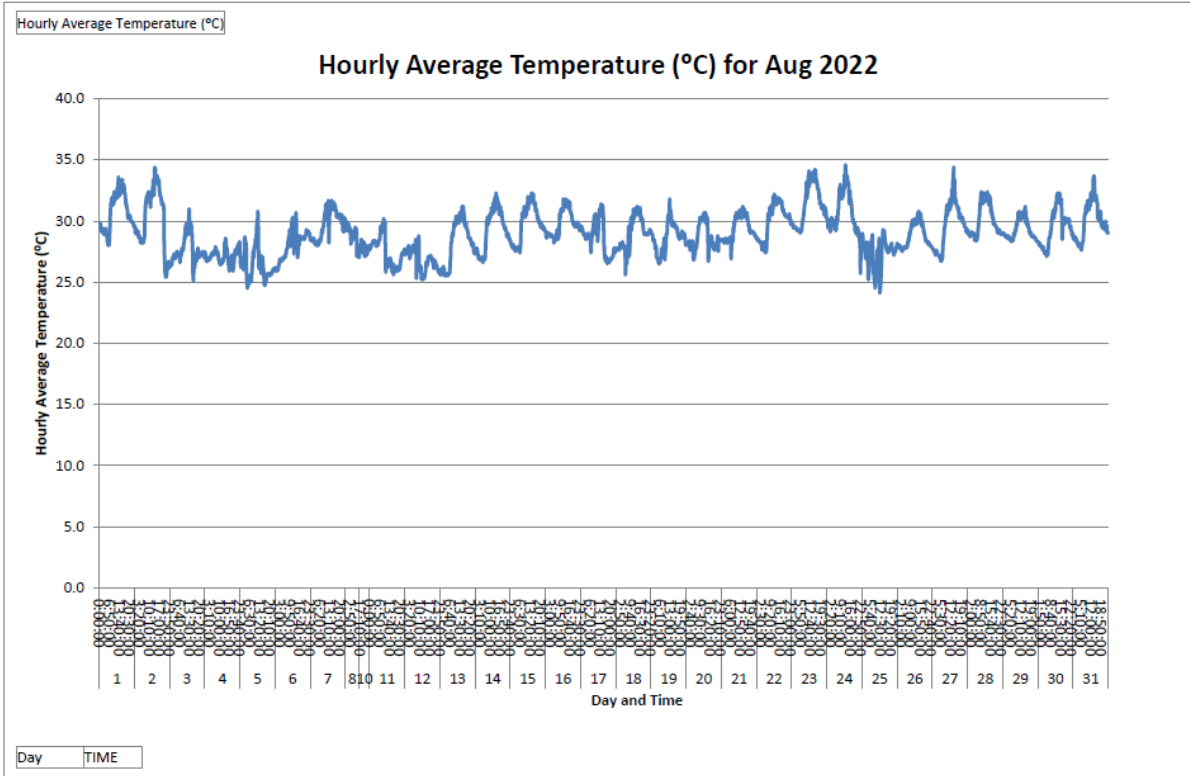
Day TIME

Wind Rose for Jul 2022

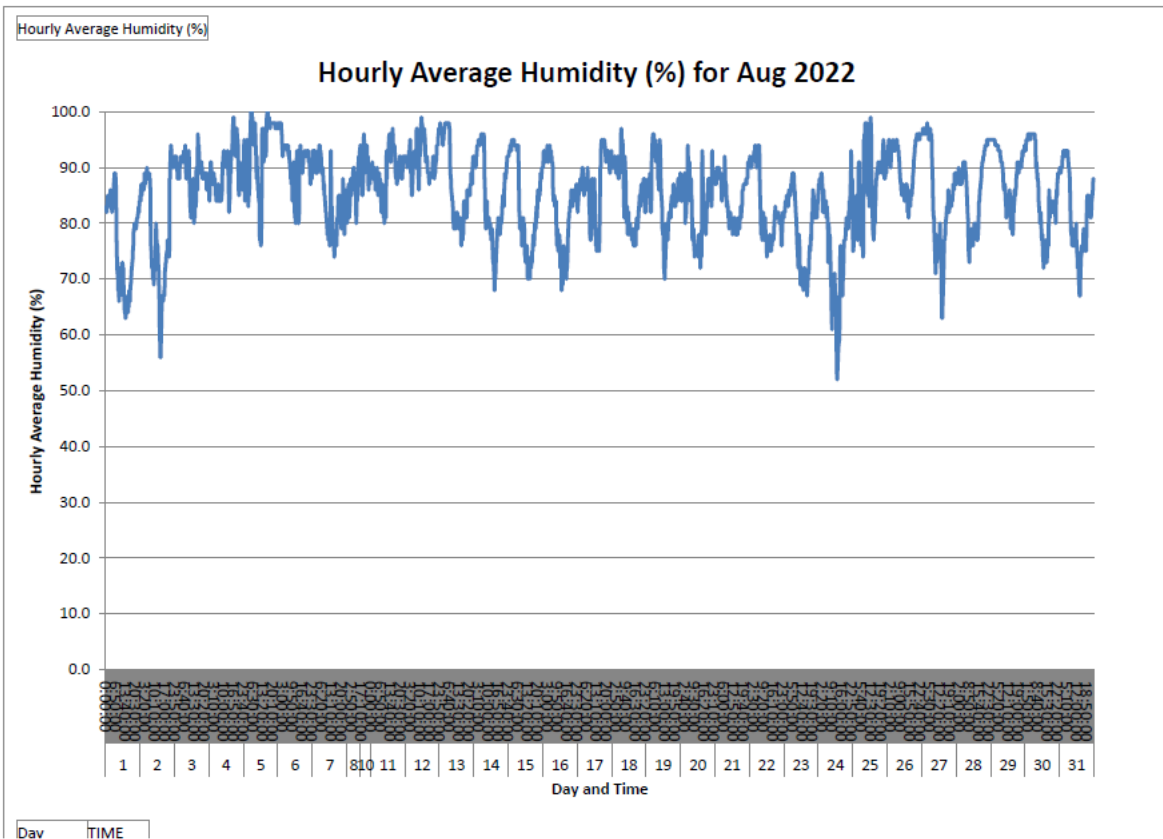




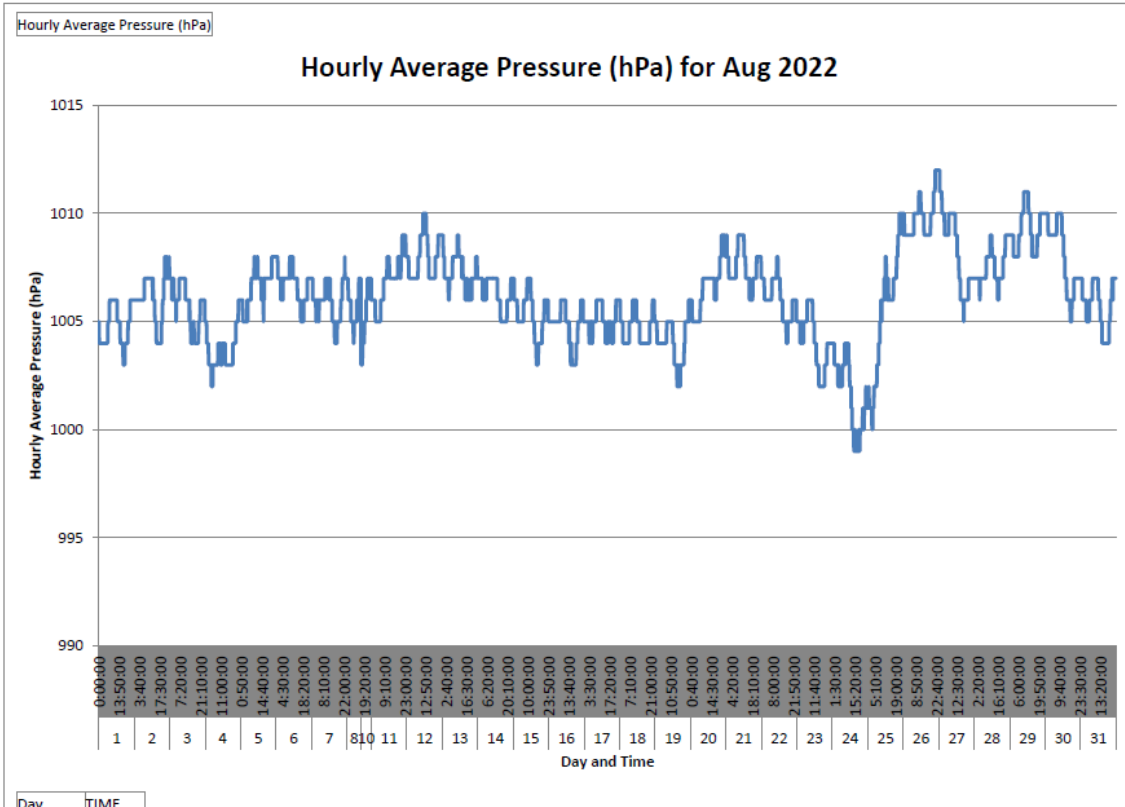
August 2022



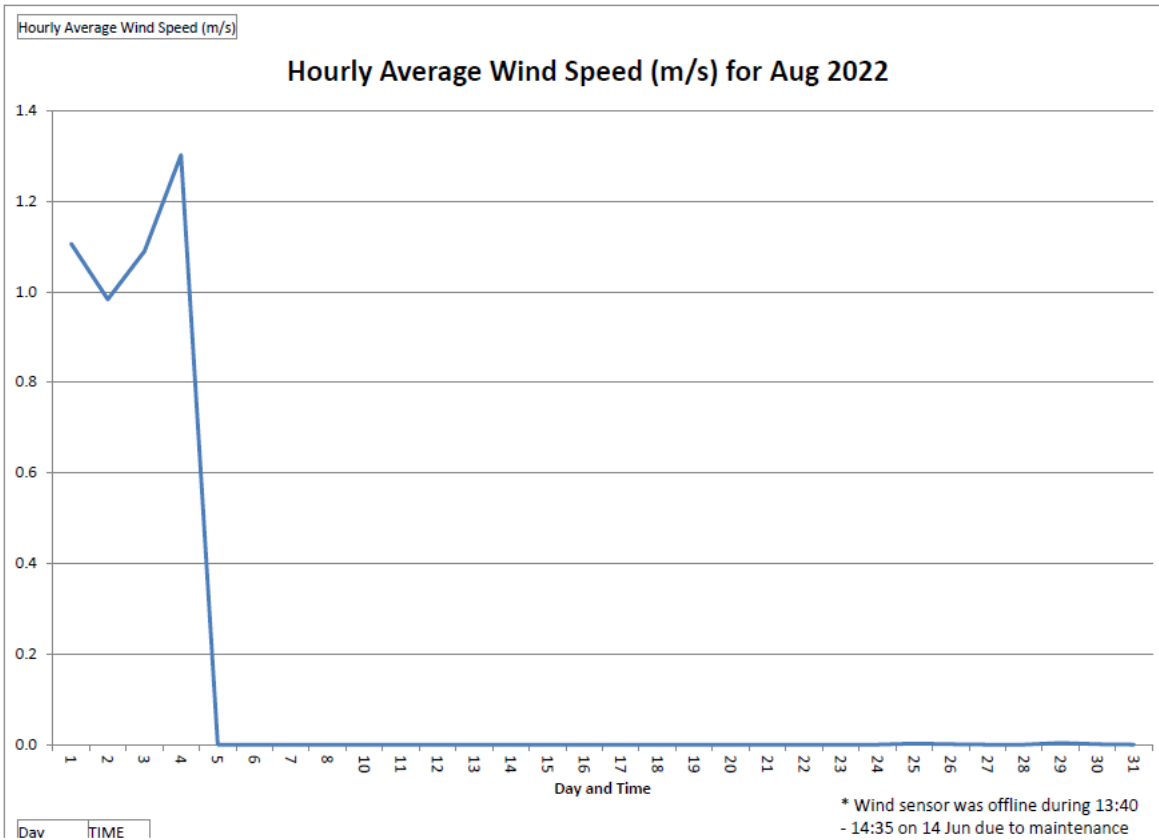
*Remark: Due to the met station system failure on 8 Aug 2022, the data from 8 Aug 2022 - 09:20 to 10 Aug 2022 - 17:00 has been lost.



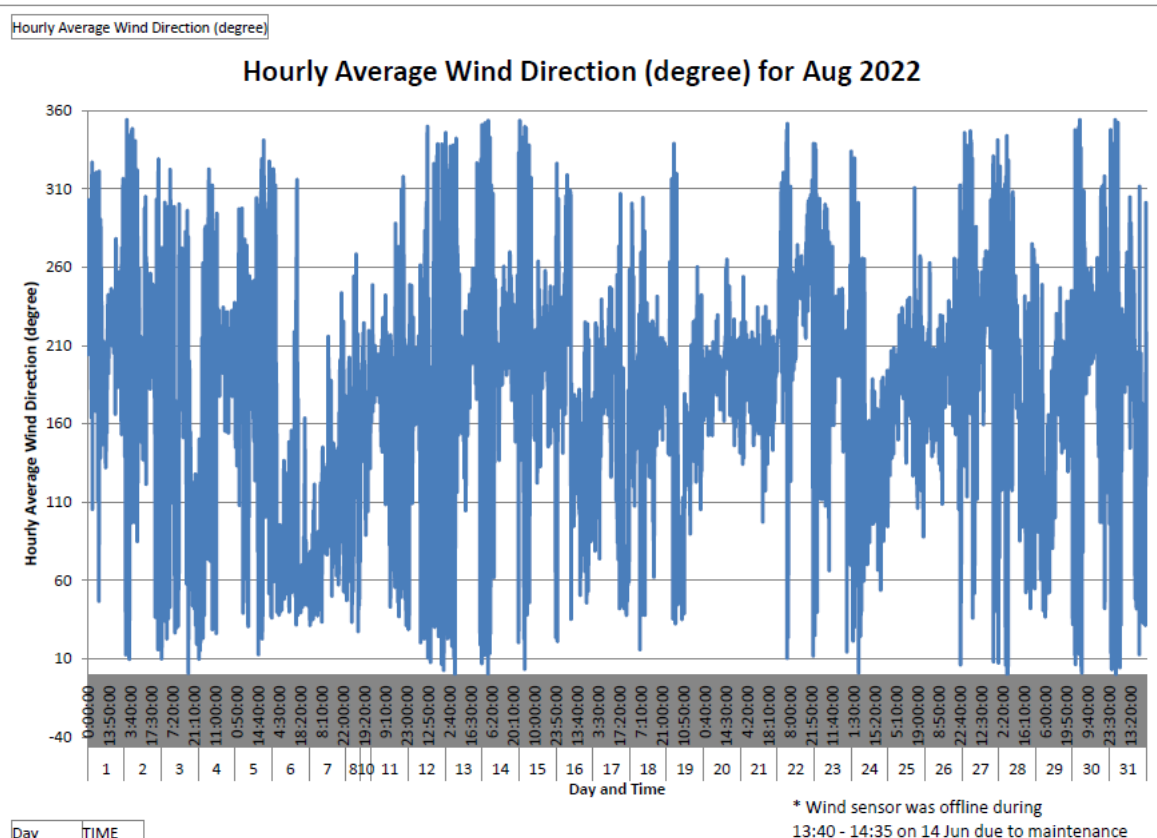
*Remark: Due to the met station system failure on 8 Aug 2022, the data from 8 Aug 2022 - 09:20 to 10 Aug 2022 - 17:00 has been lost.



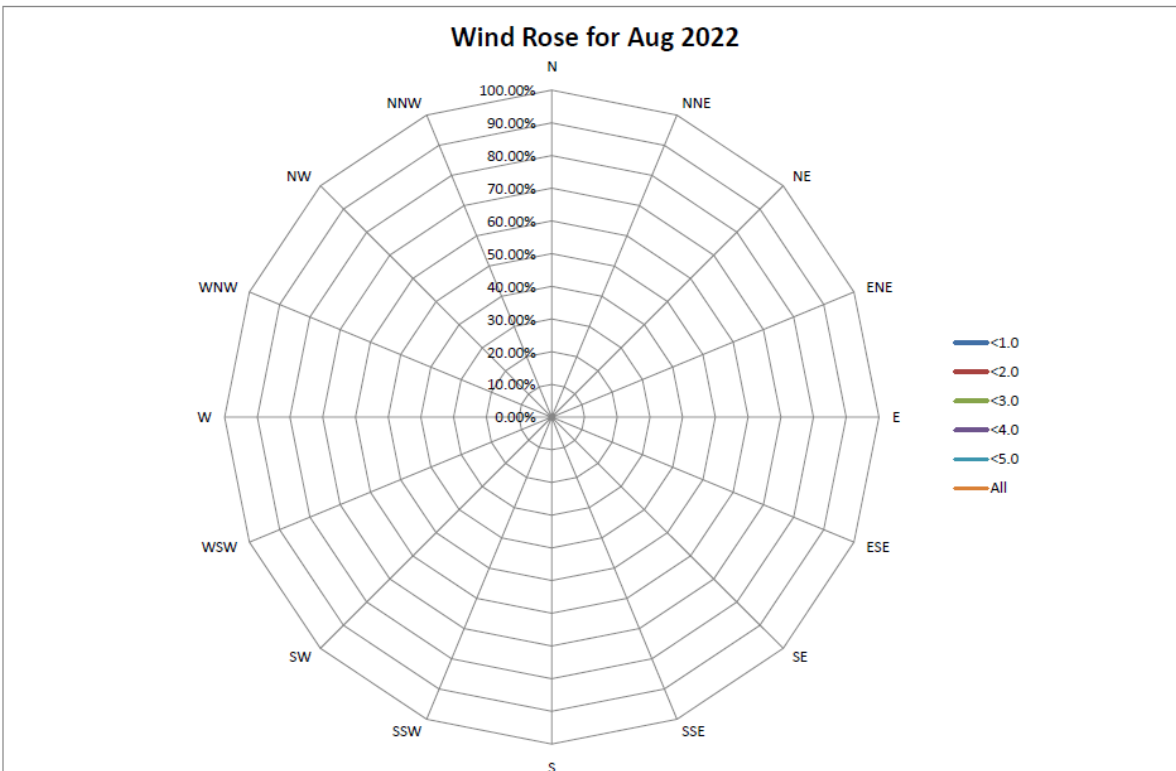
*Remark: Due to the met station system failure on 8 Aug 2022, the data from 8 Aug 2022 - 09:20 to 10 Aug 2022 - 17:00 has been lost.



*Remark: Due to the Wind Speed Sensor has been disconnected on 4 Aug 2022, data loss in Aug 2022.
 Due to the met station system failure on 8 Aug 2022, the data from 8 Aug 2022 - 09:20 to 10 Aug 2022 - 17:00 has been lost.
 - Data from 5 Aug 2022 to 31 Aug 2022 is pending from Hong Kong Observatory and to be supplemented in subsequent version.

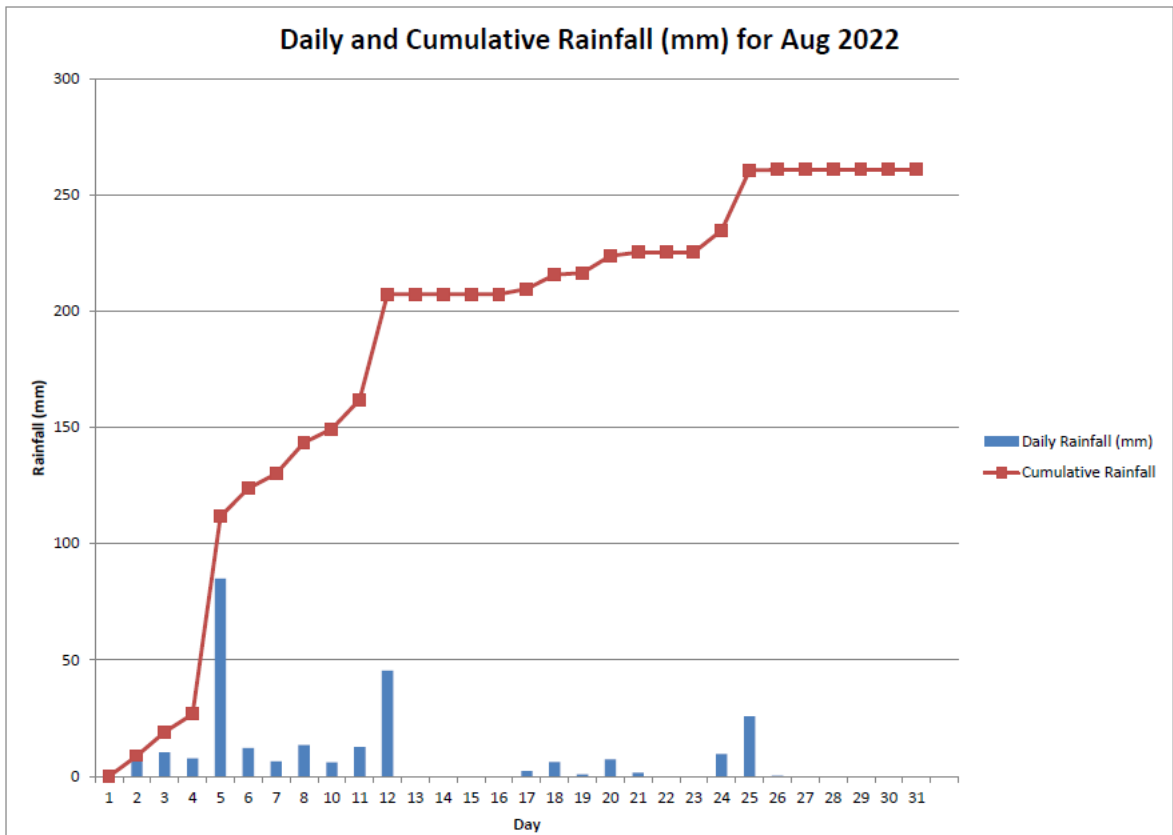


*Remark: Due to the met station system failure on 8 Aug 2022, the data from 8 Aug 2022 - 09:20 to 10 Aug 2022 - 17:00 has been lost.



*Remark: Due to the Wind Speed Sensor has been disconnected on 4 Aug 2022, data loss in Aug 2022.

- Data from 5 Aug 2022 to 31 Aug 2022 is pending from Hong Kong Observatory and to be supplemented in subsequent version.



*Remark: Due to the met station system failure on 8 Aug 2022, the data from 8 Aug 2022 - 09:20 to 10 Aug 2022 - 17:00 has been lost.

