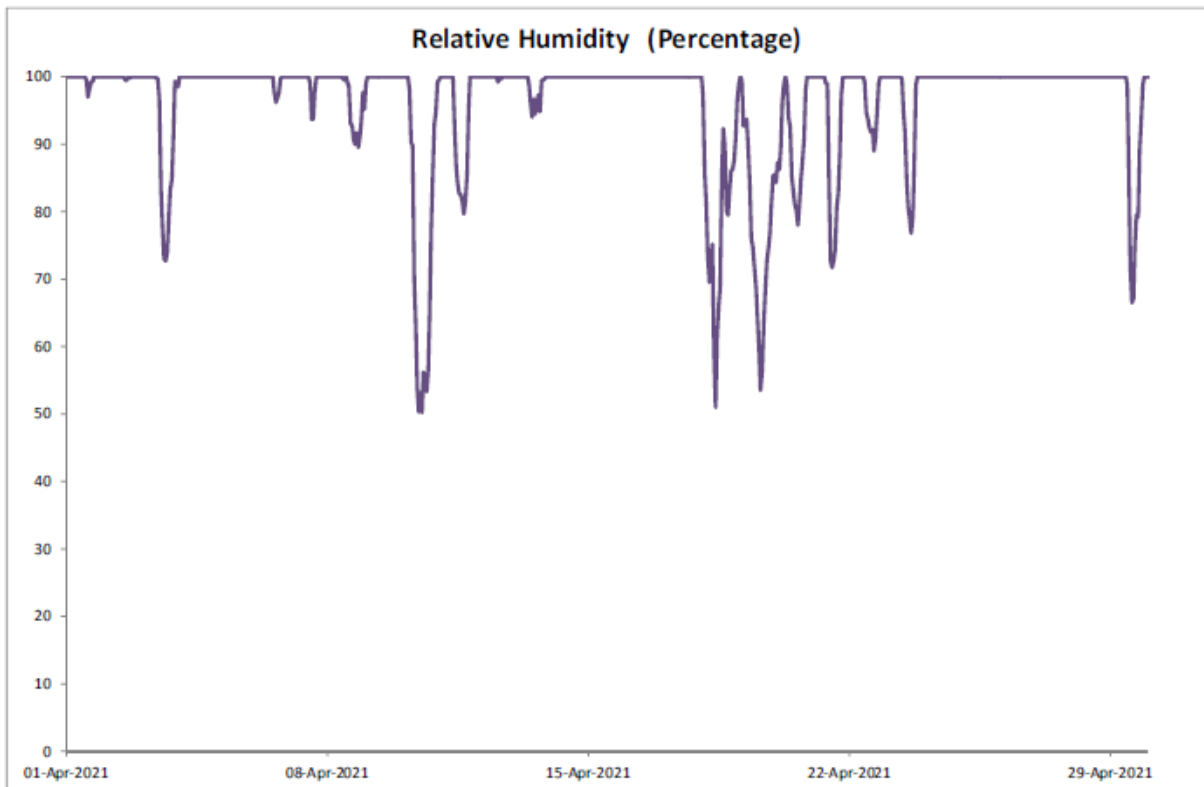
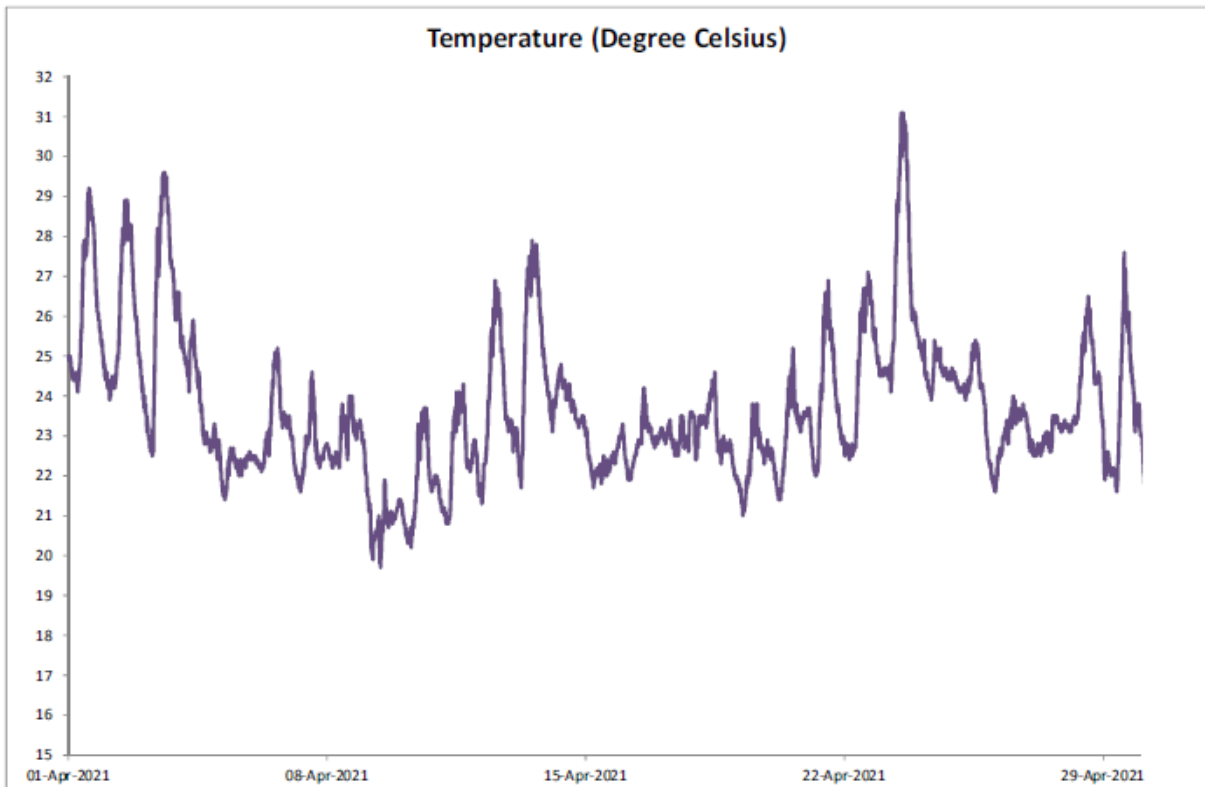


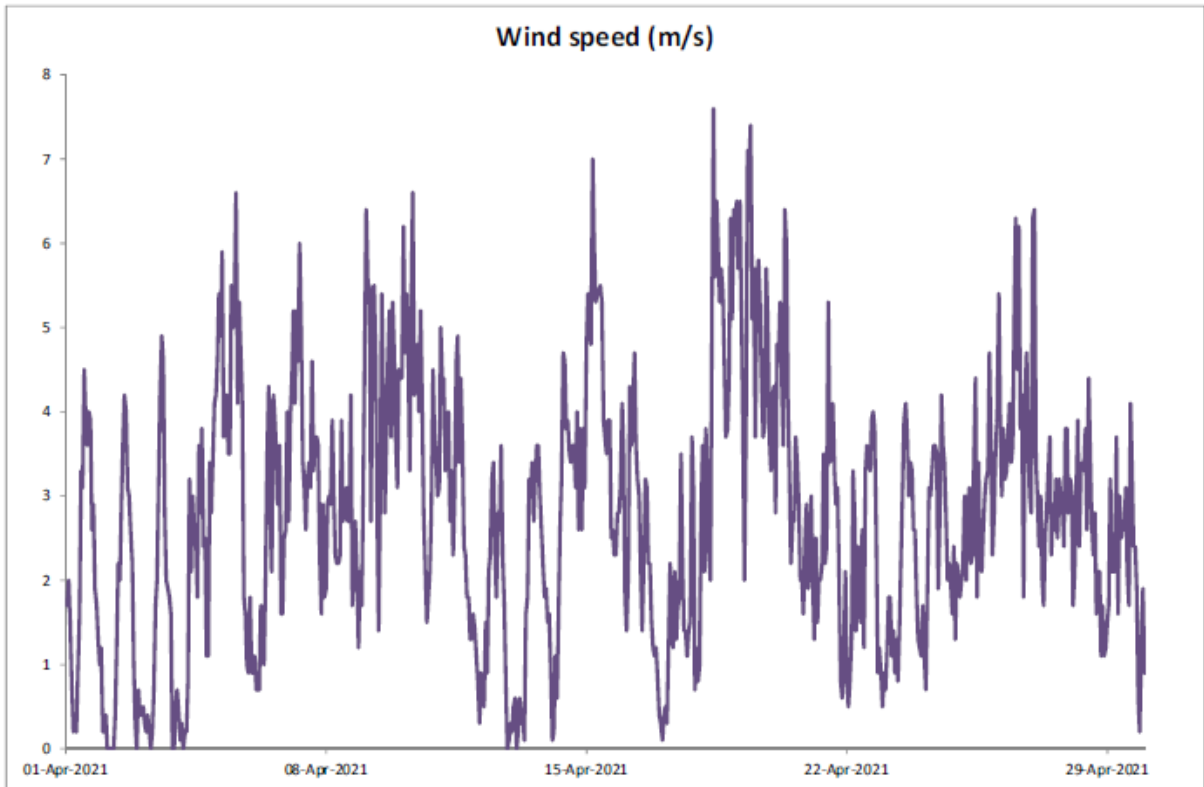
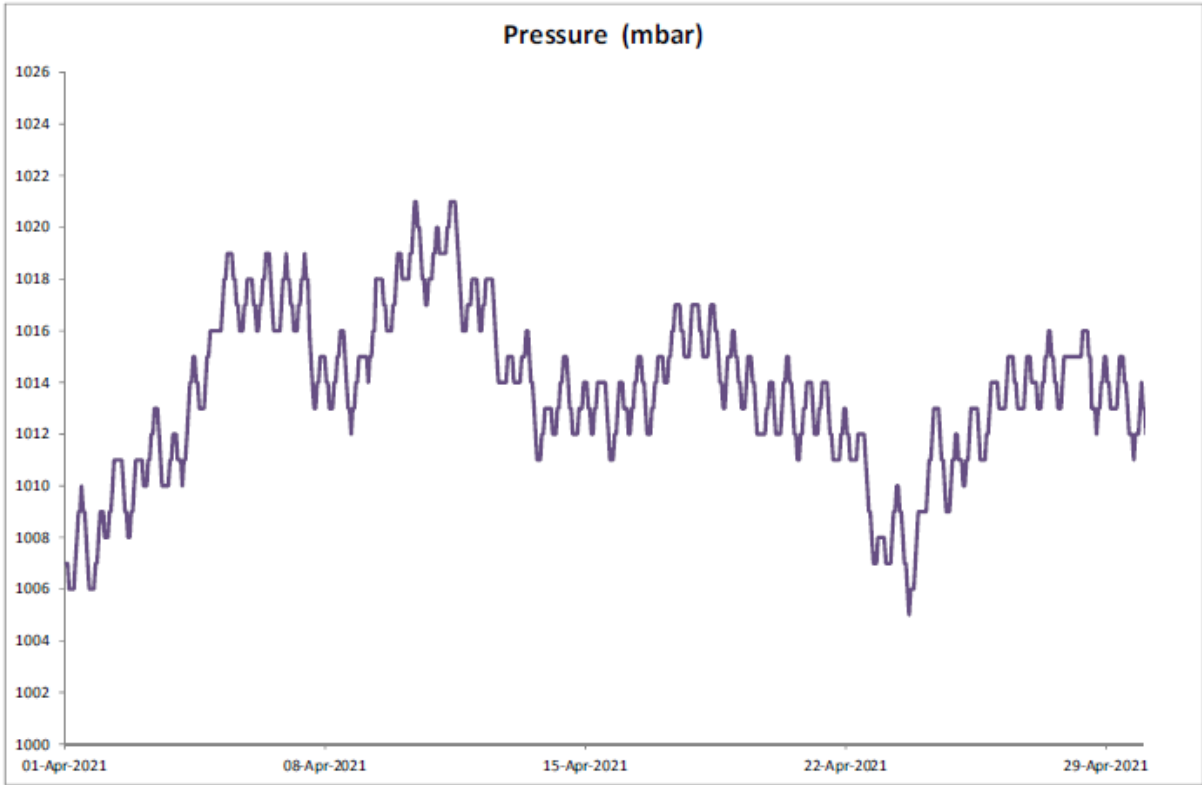
Annex D3

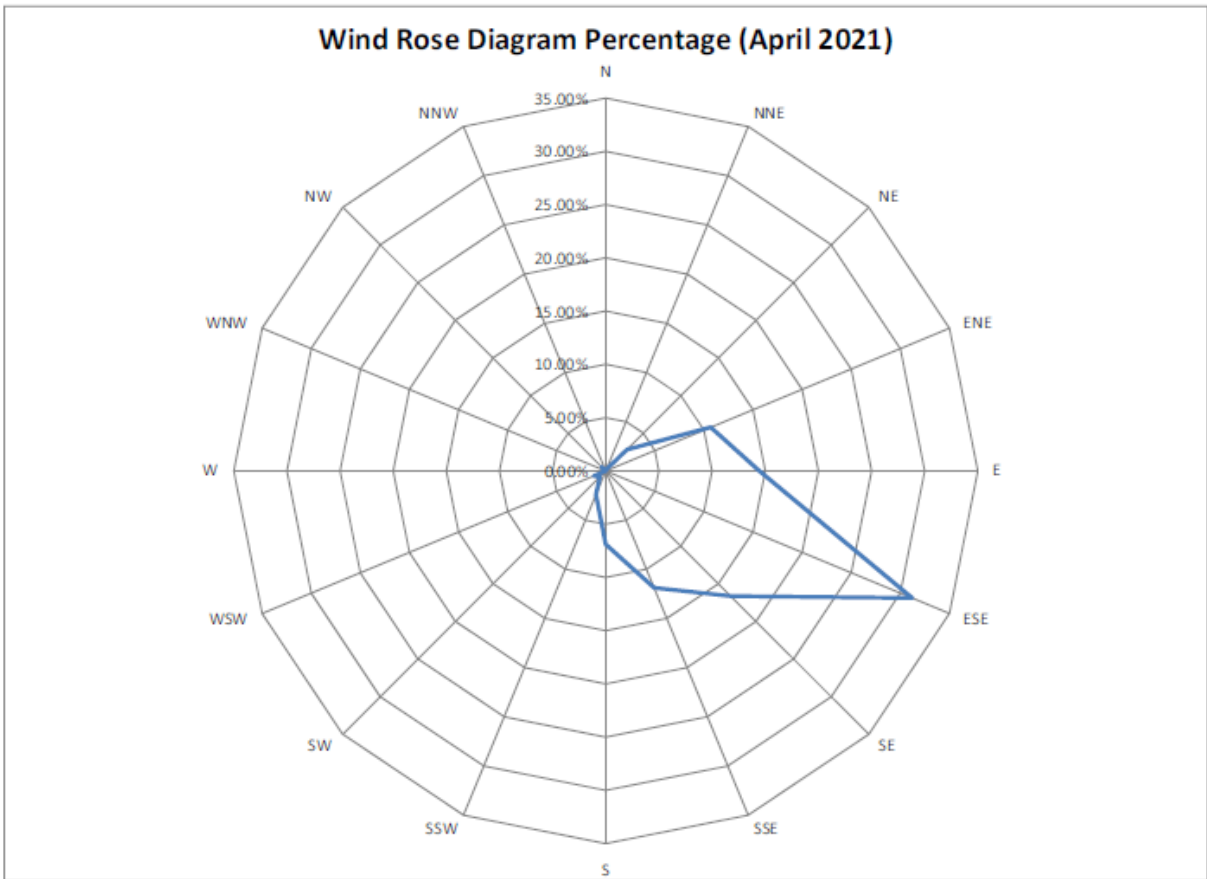
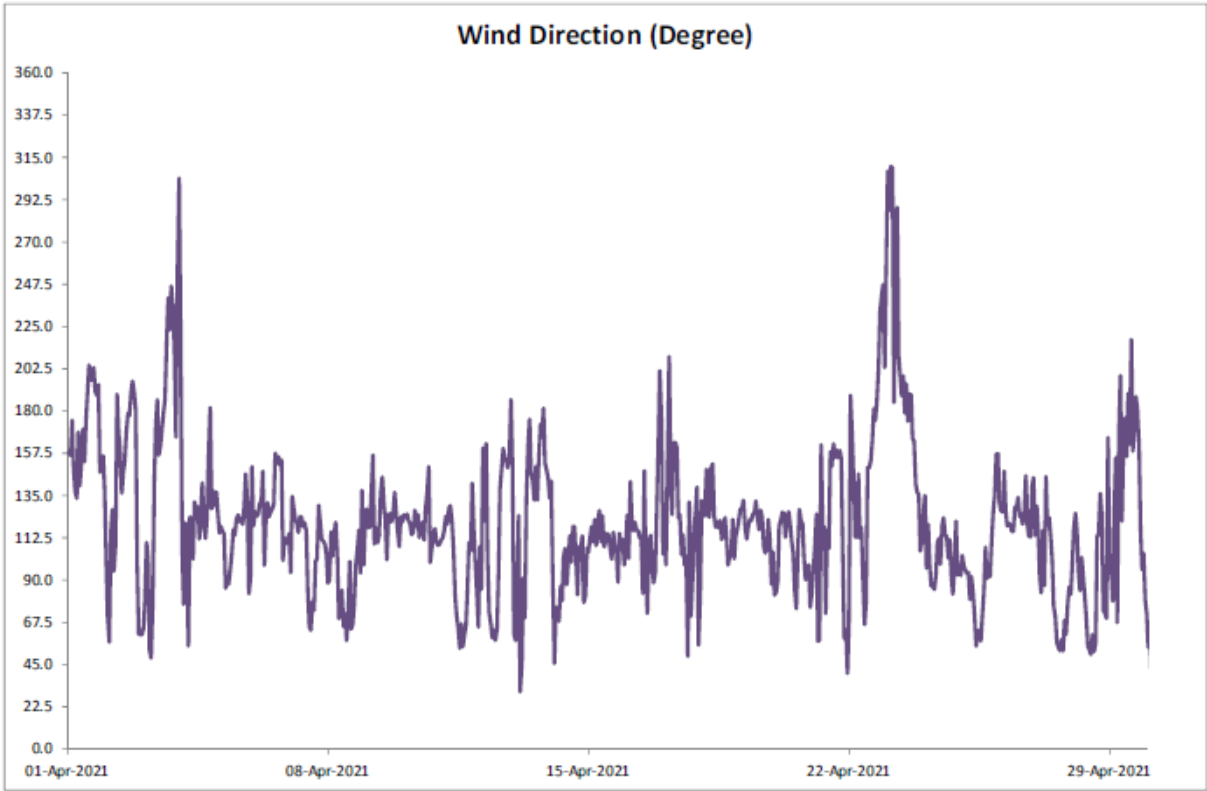
## Meteorological Data

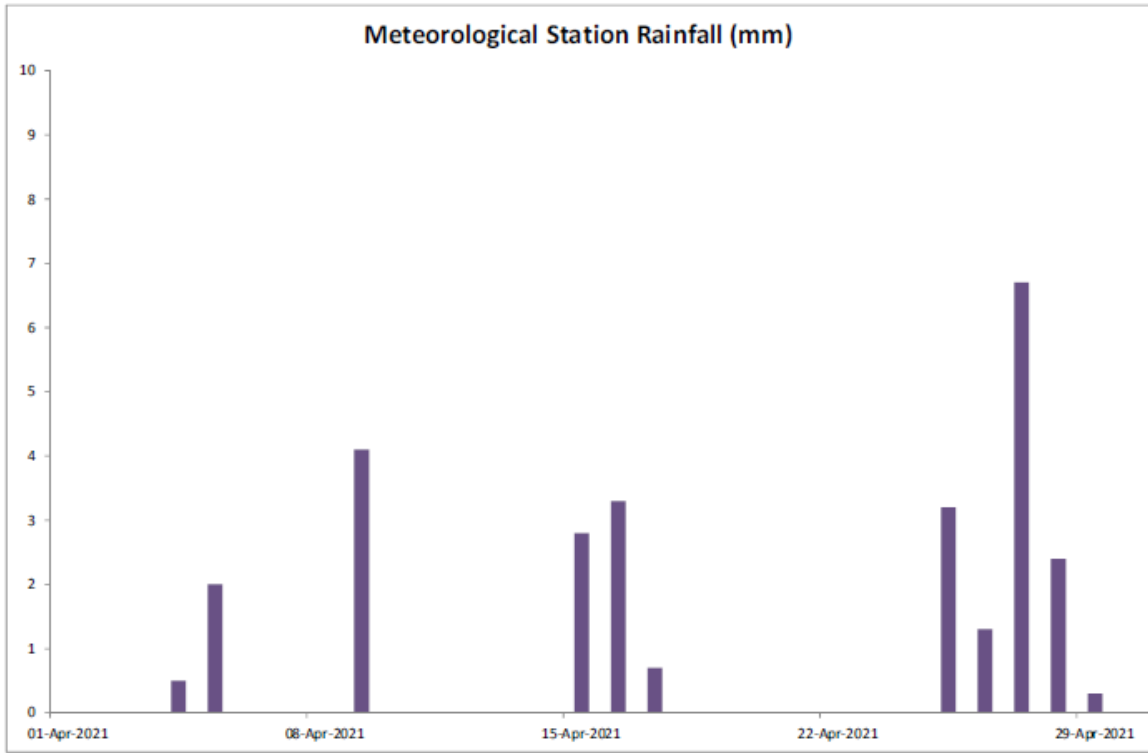
*Annex D3 Meteorological Data*

April 2021

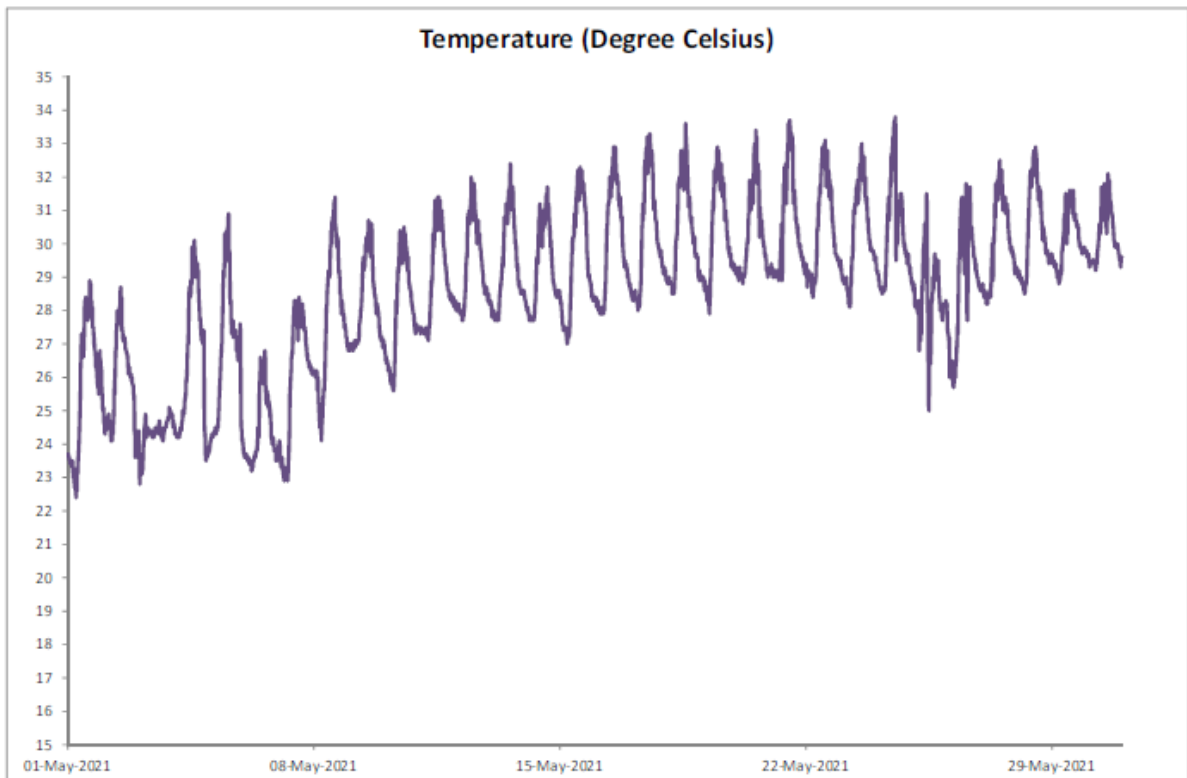


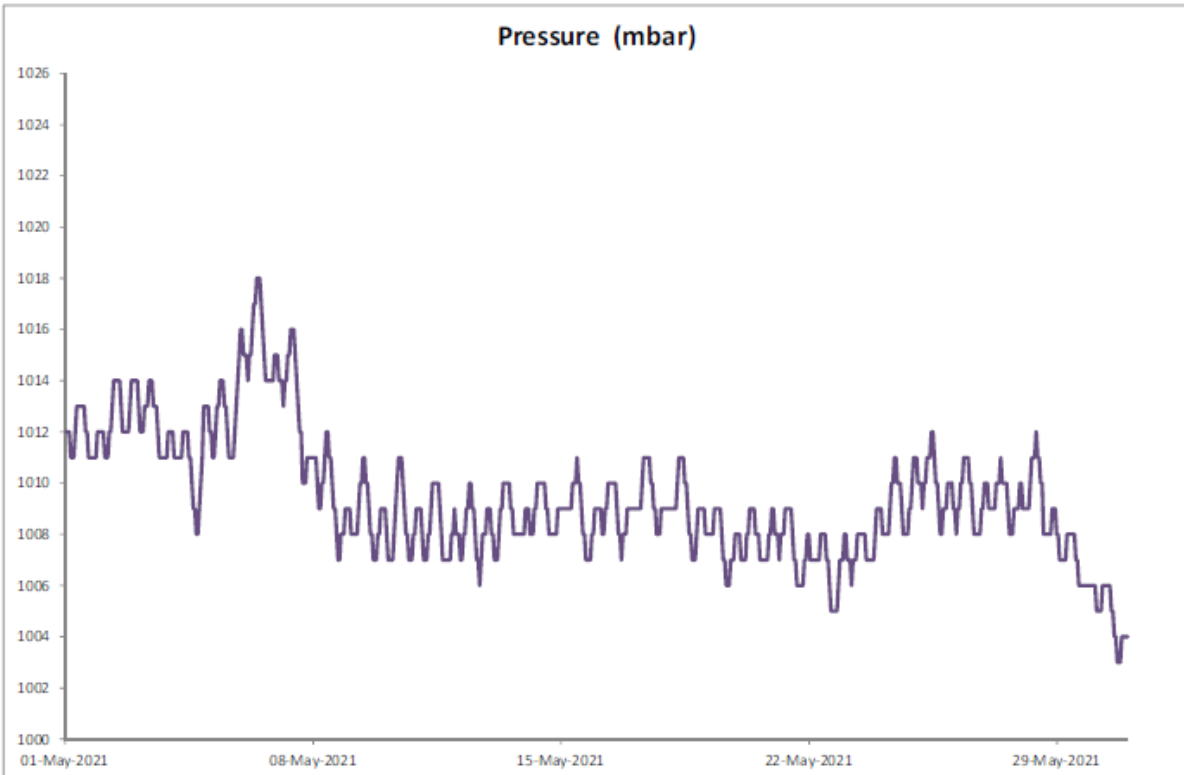
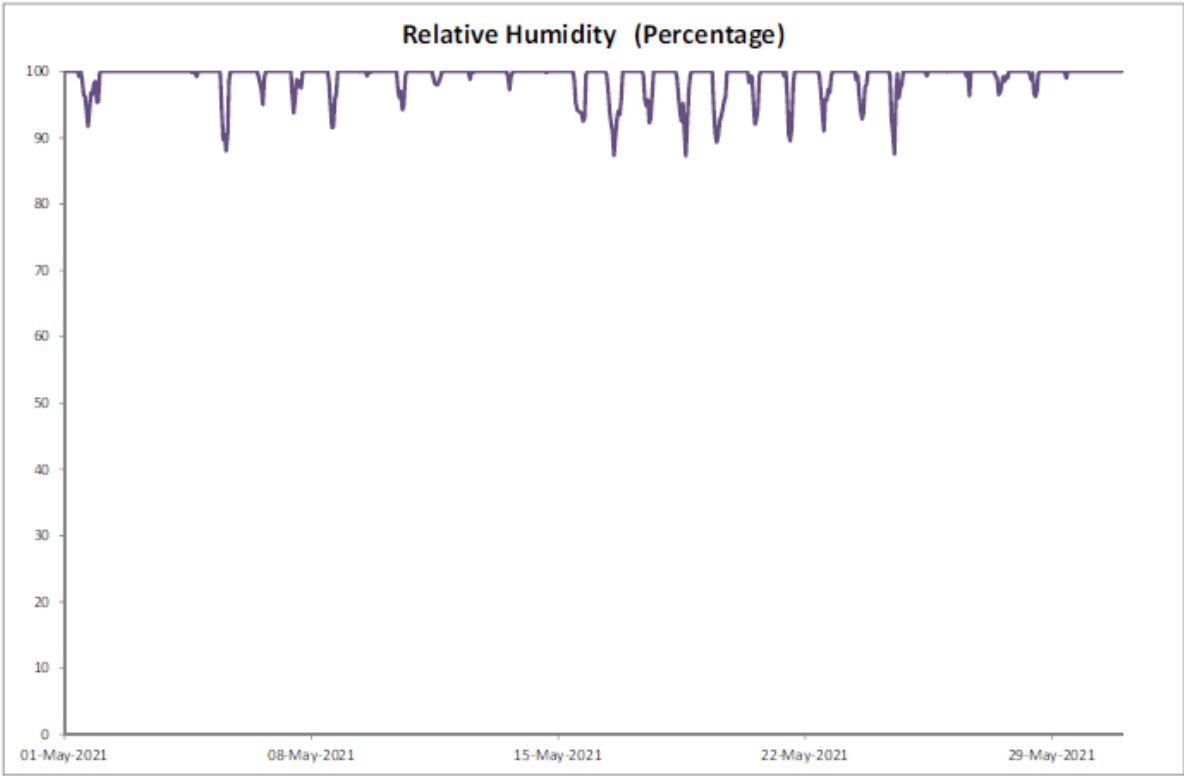


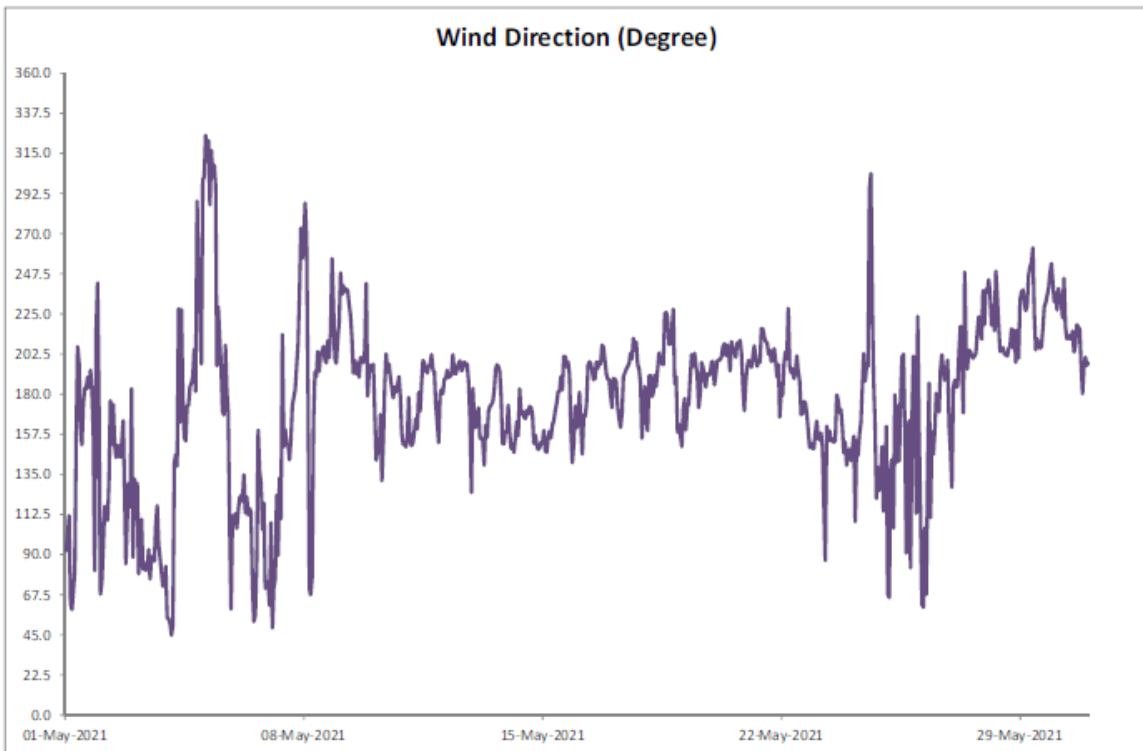
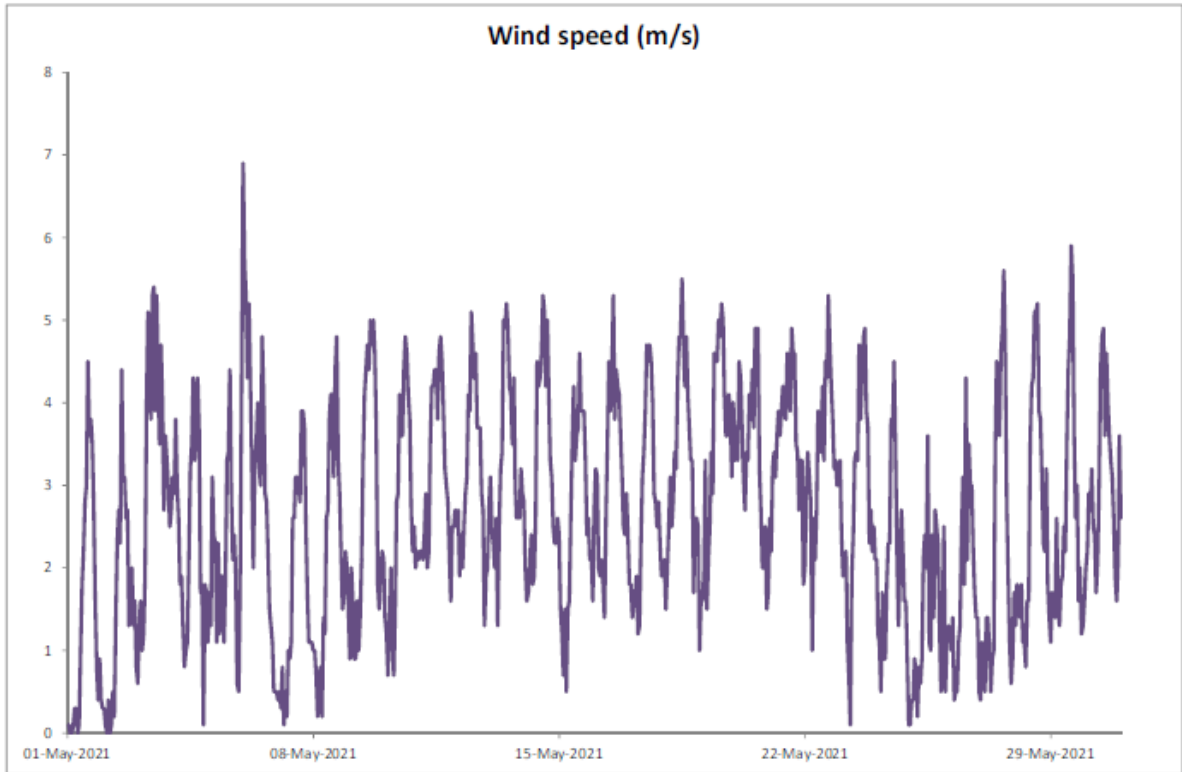


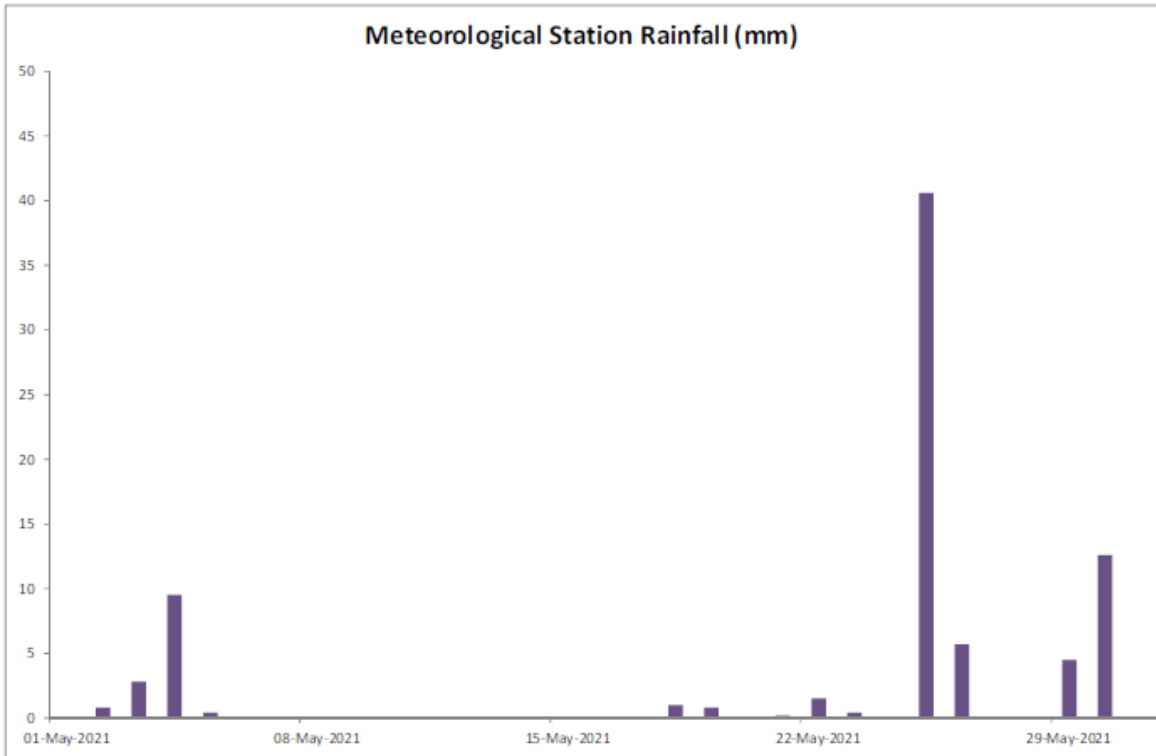
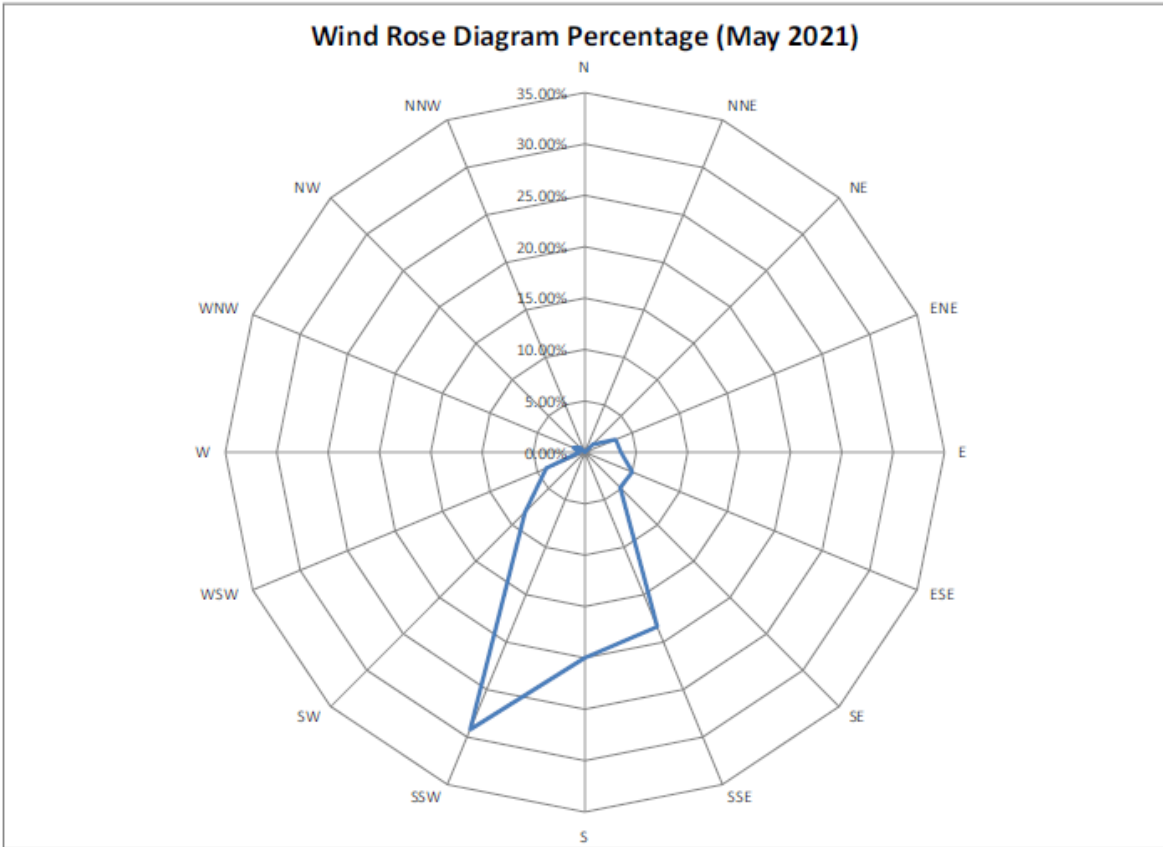


May 2021



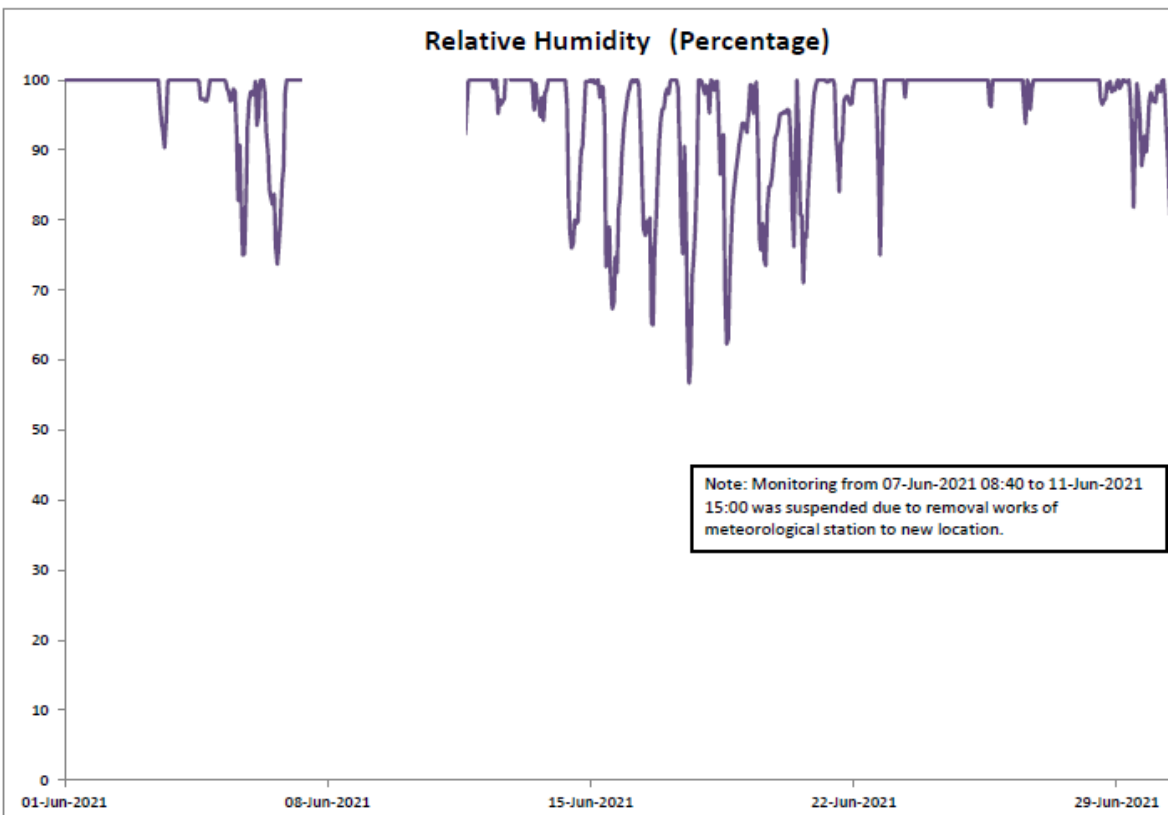
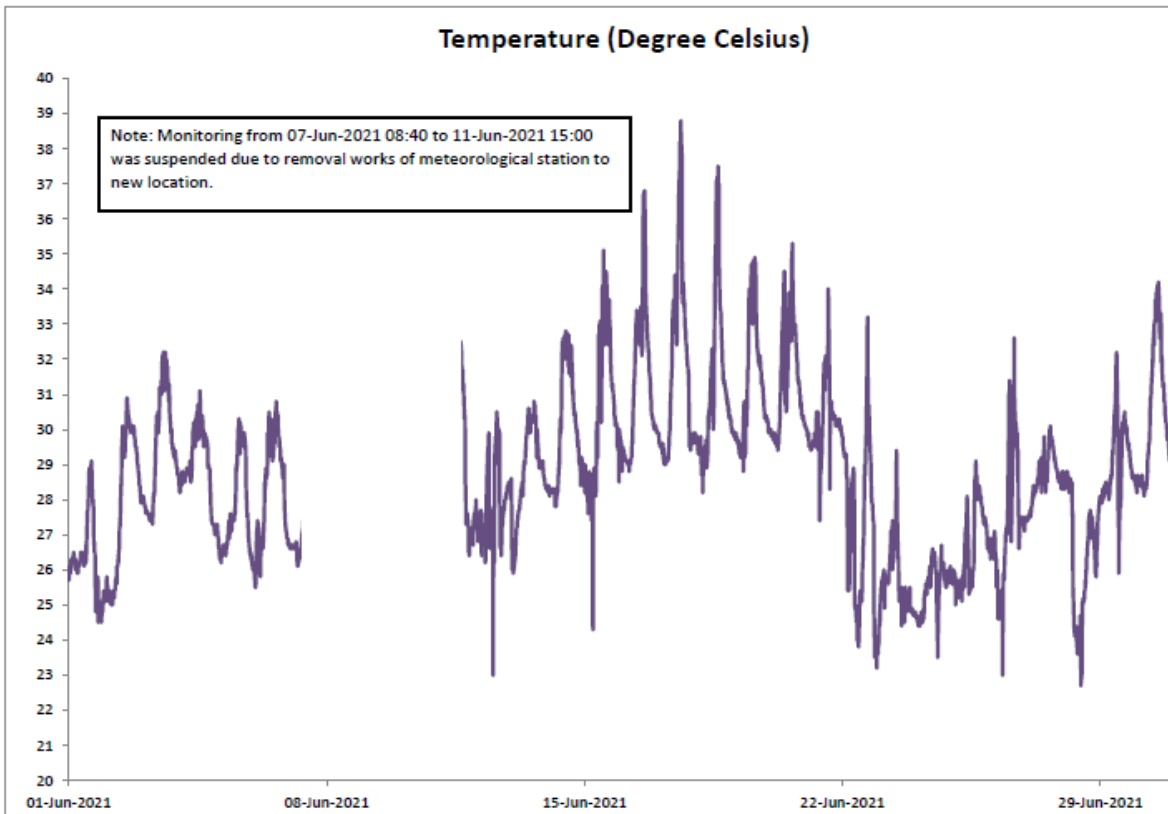


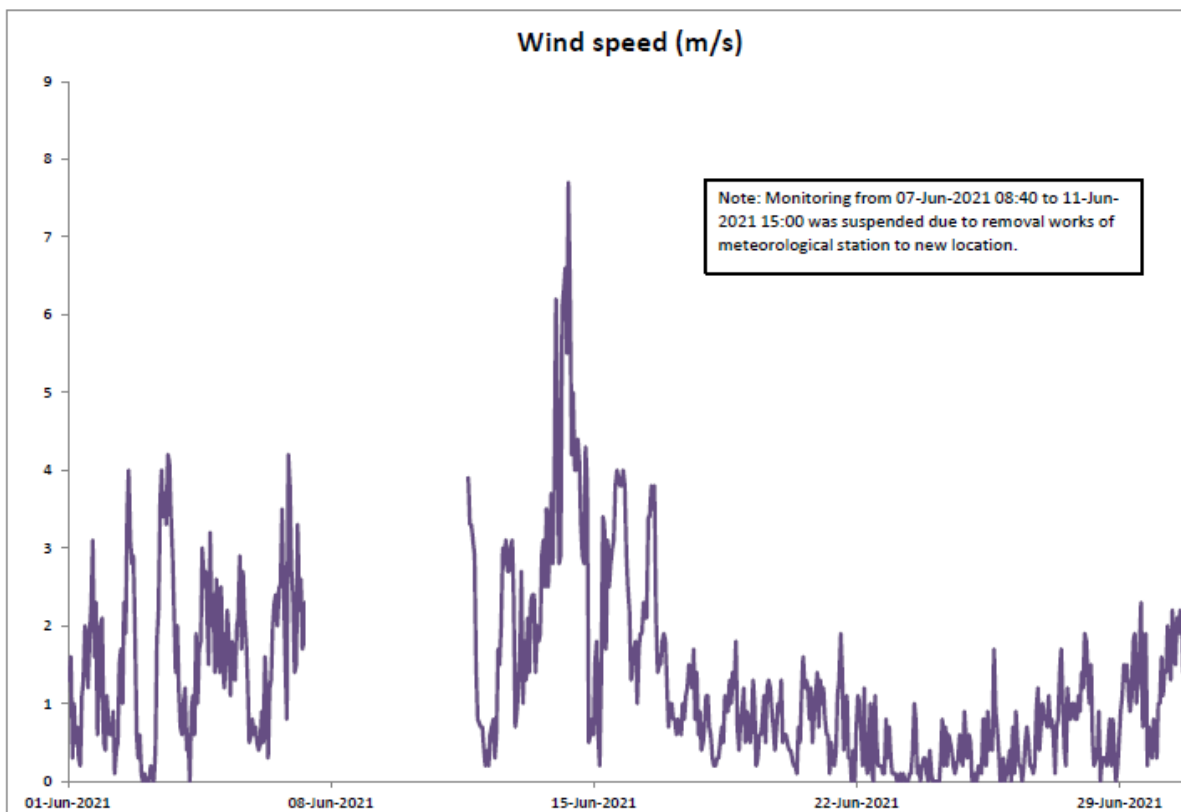
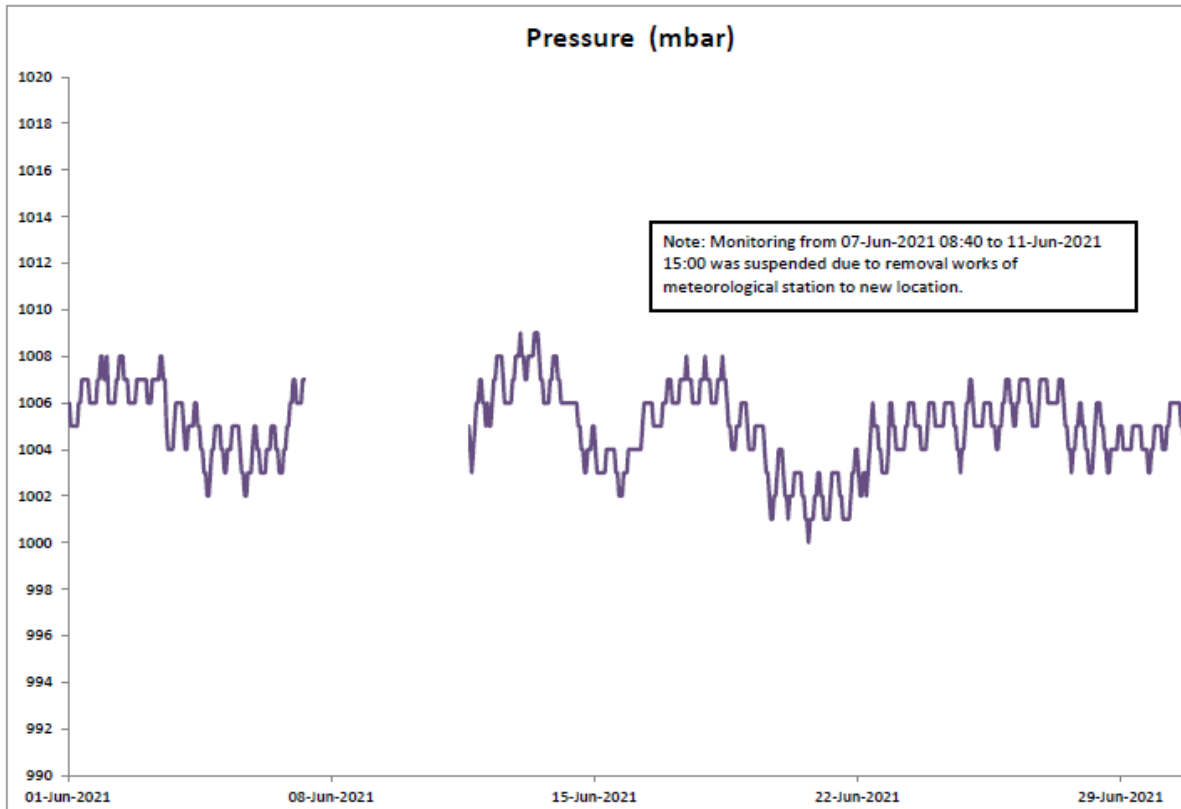


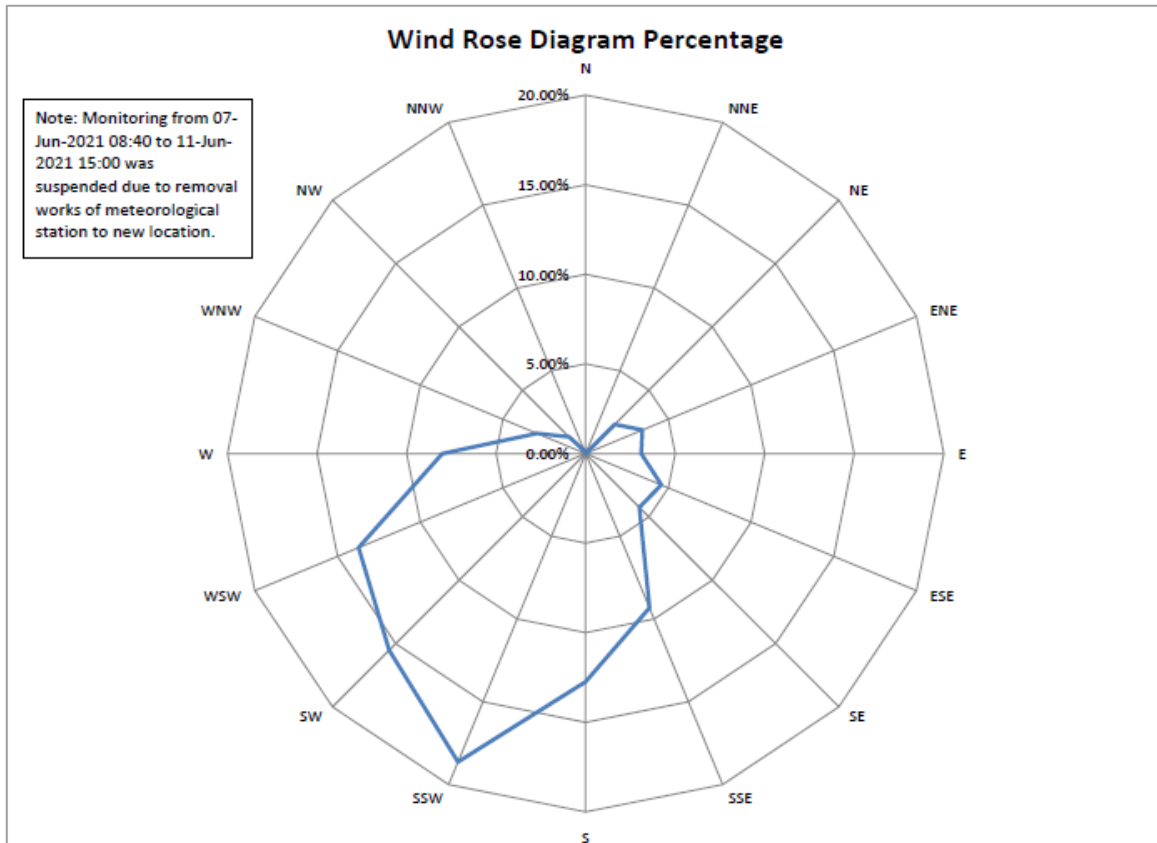
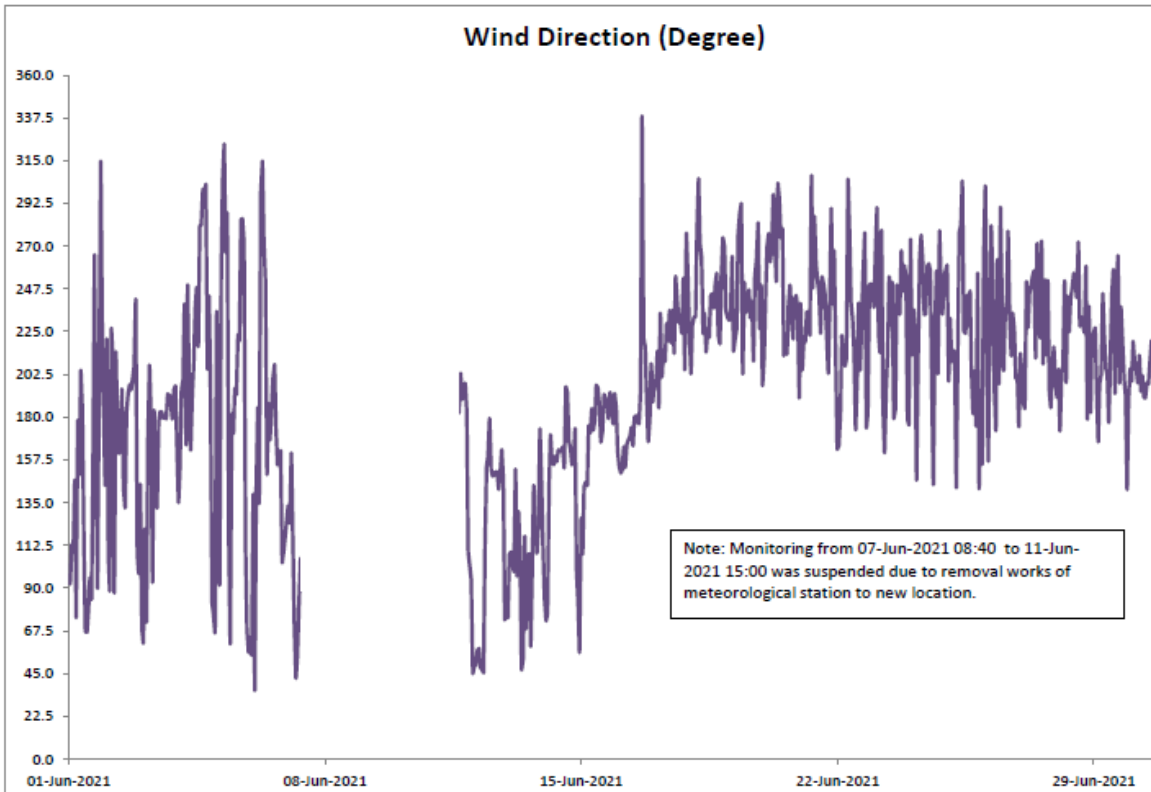


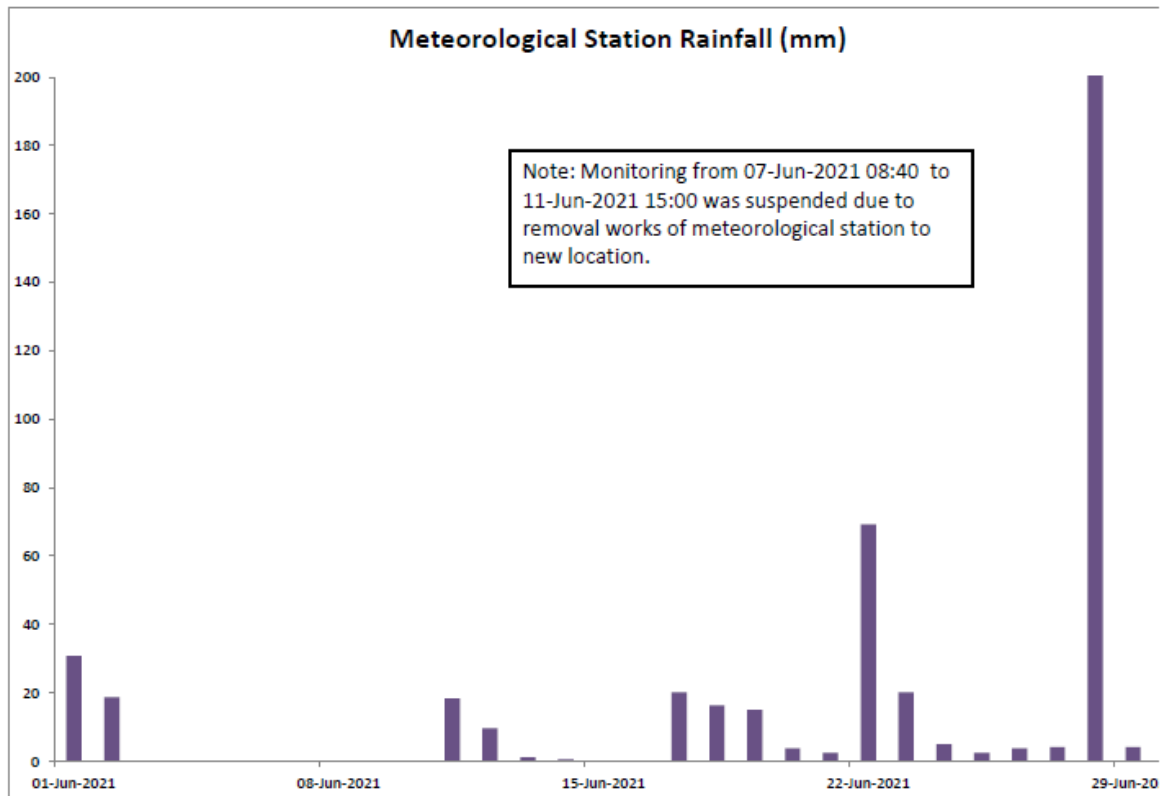


June 2021









Daily Extract of Meteorological Observations , June 2021

Back Year 2021 Month 6 Go

Day	Hong Kong Observatory							
	Mean Pressure (hPa)	Air Temperature			Mean Dew Point (deg. C)	Mean Relative Humidity (%)	Mean Amount of Cloud (%)	Total Rainfall (mm)
		Absolute Daily Max (deg. C)	Mean (deg. C)	Absolute Daily Min (deg. C)				
01	1006.6	29.3	26.5	24.1	24.9	91	92	45.8
02	1006.9	31.3	28.3	25.0	25.5	85	85	2.4
03	1006.3	34.0	30.3	27.9	25.8	77	63	0.0
04	1004.7	29.8	28.4	26.7	25.5	84	87	7.5
05	1004.3	29.2	27.3	25.6	21.8	73	80	Trace
06	1004.6	31.4	28.2	26.4	23.0	74	64	Trace
07	1007.3	32.2	28.7	26.6	24.5	78	68	Trace
08	1008.0	33.5	29.3	26.5	25.3	79	84	0.9
09	1007.2	29.9	27.9	26.4	25.5	87	88	48.6
10	1005.6	32.8	28.8	25.5	25.5	83	82	29.4
11	1005.4	32.9	29.1	26.7	25.7	82	85	31.2

Note: At the time of reporting, the daily extract of meteorological observations at Tseung Kwan O Station (the nearest weather station monitoring prevailing wind direction and mean wind speed) in June 2021 are not available on Hong Kong Observatory website.