

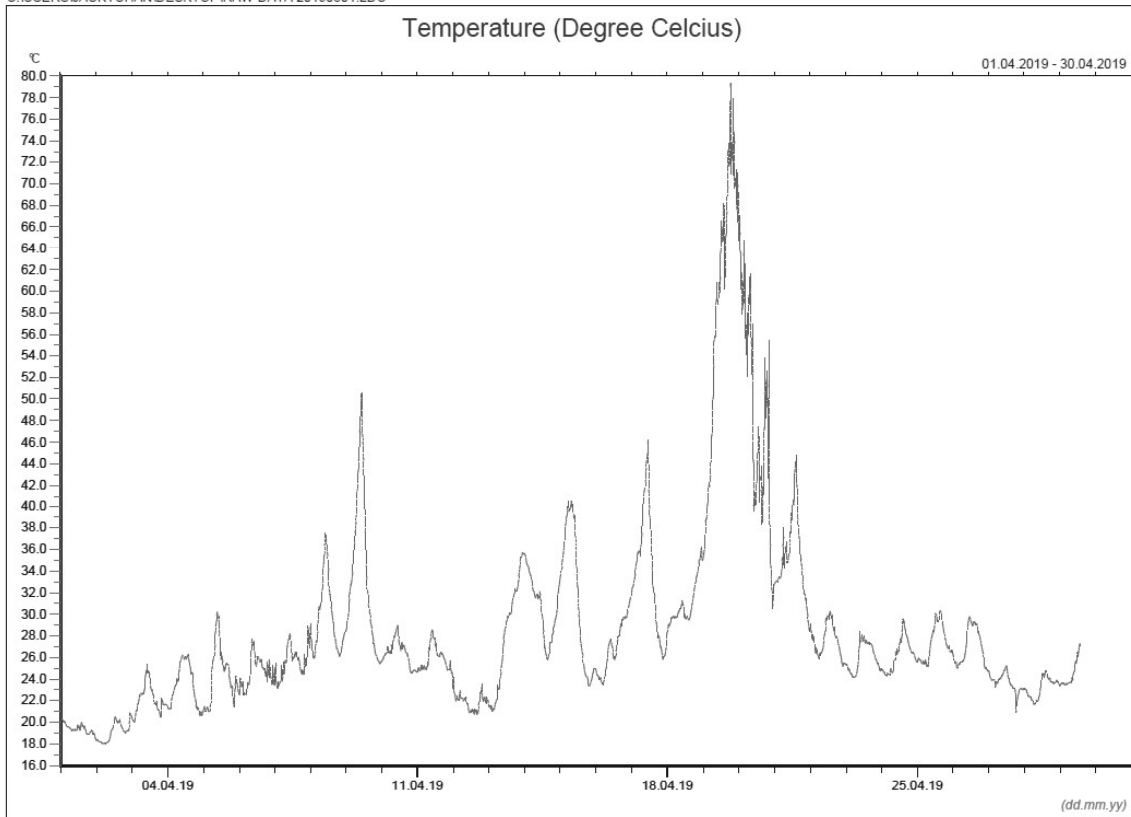
Annex D3

## Meteorological Data

Annex D3 Meteorological Data

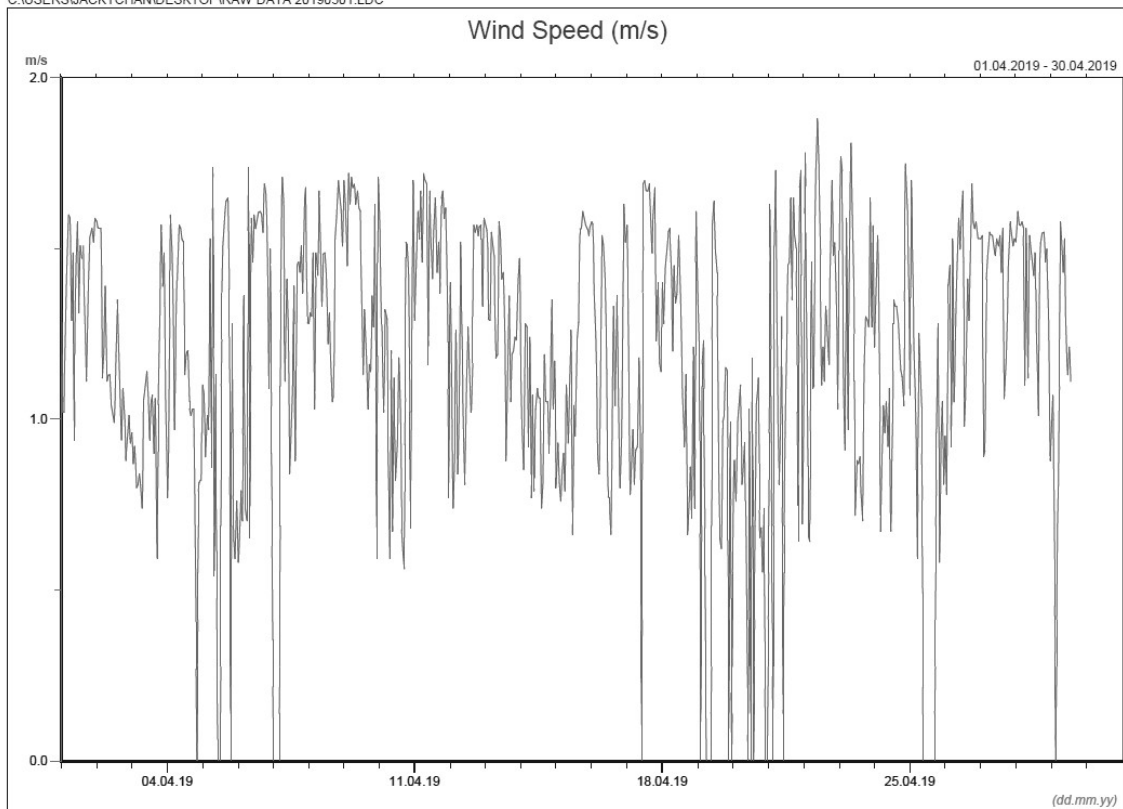
April 2019

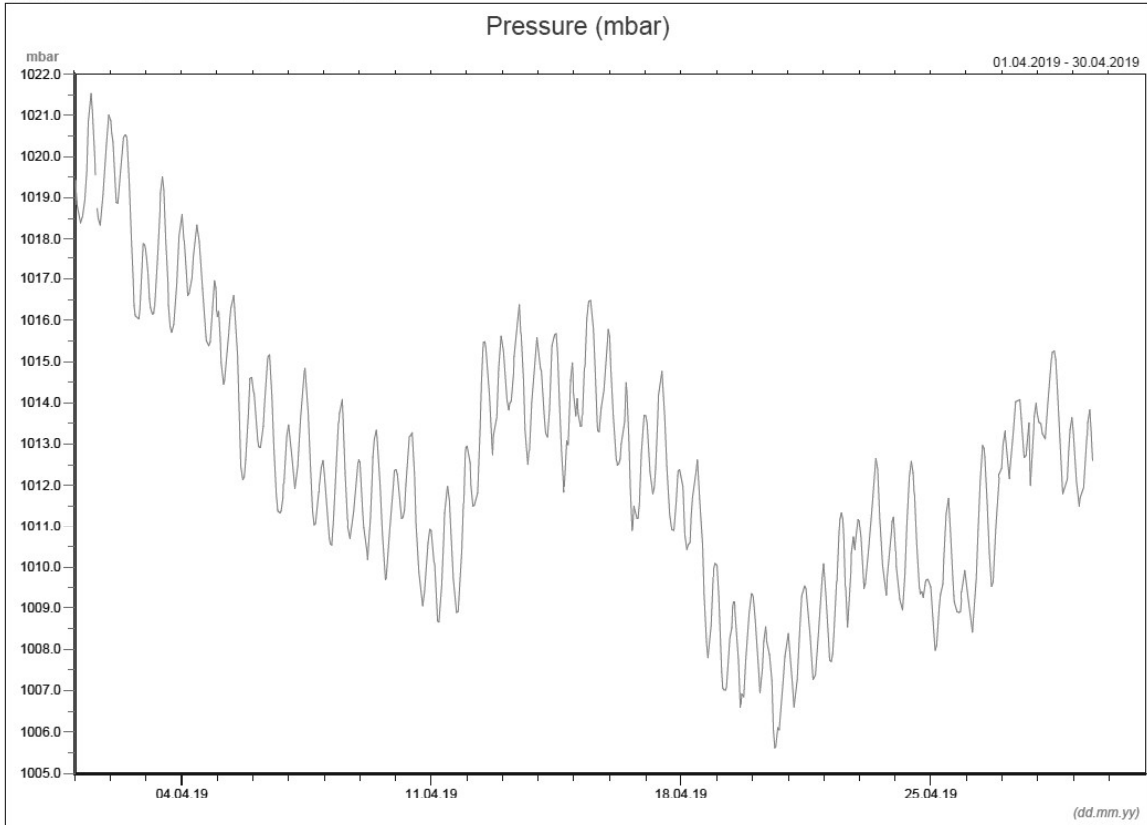
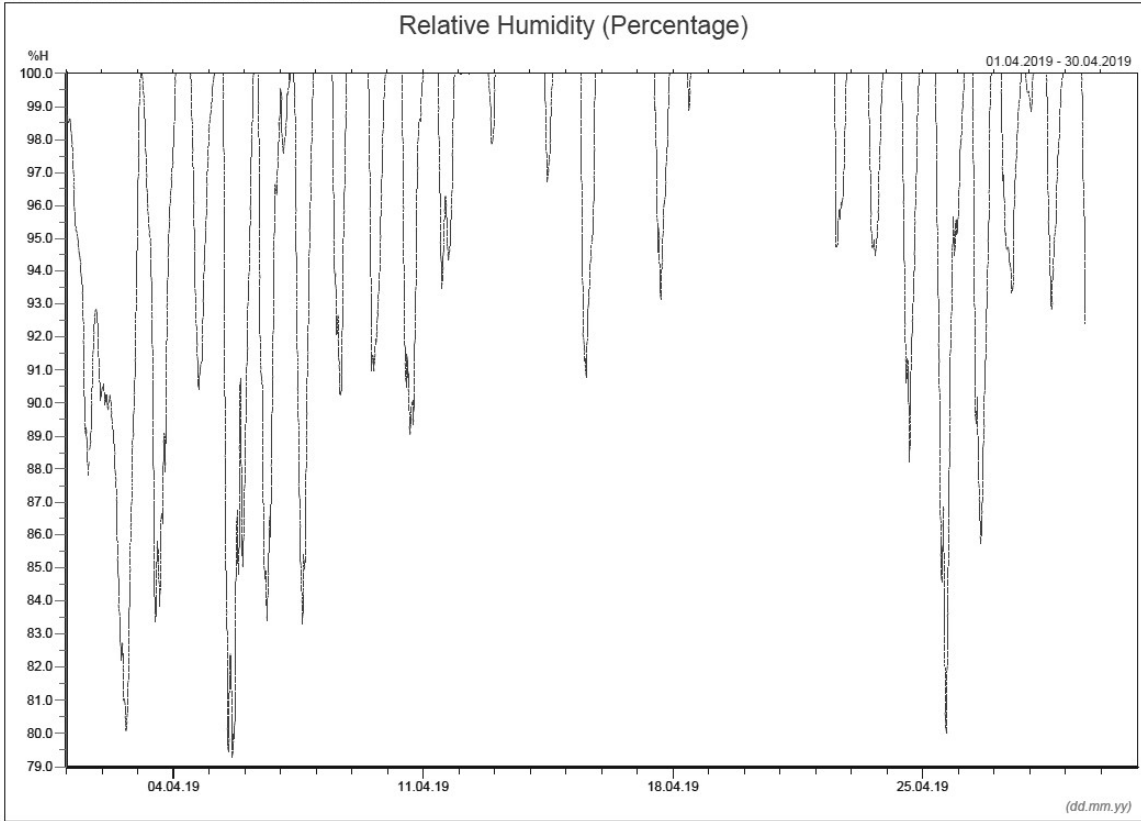
C:\USERS\JACKYCHAN\DESKTOP\PIRAW DATA 20190501.LDC

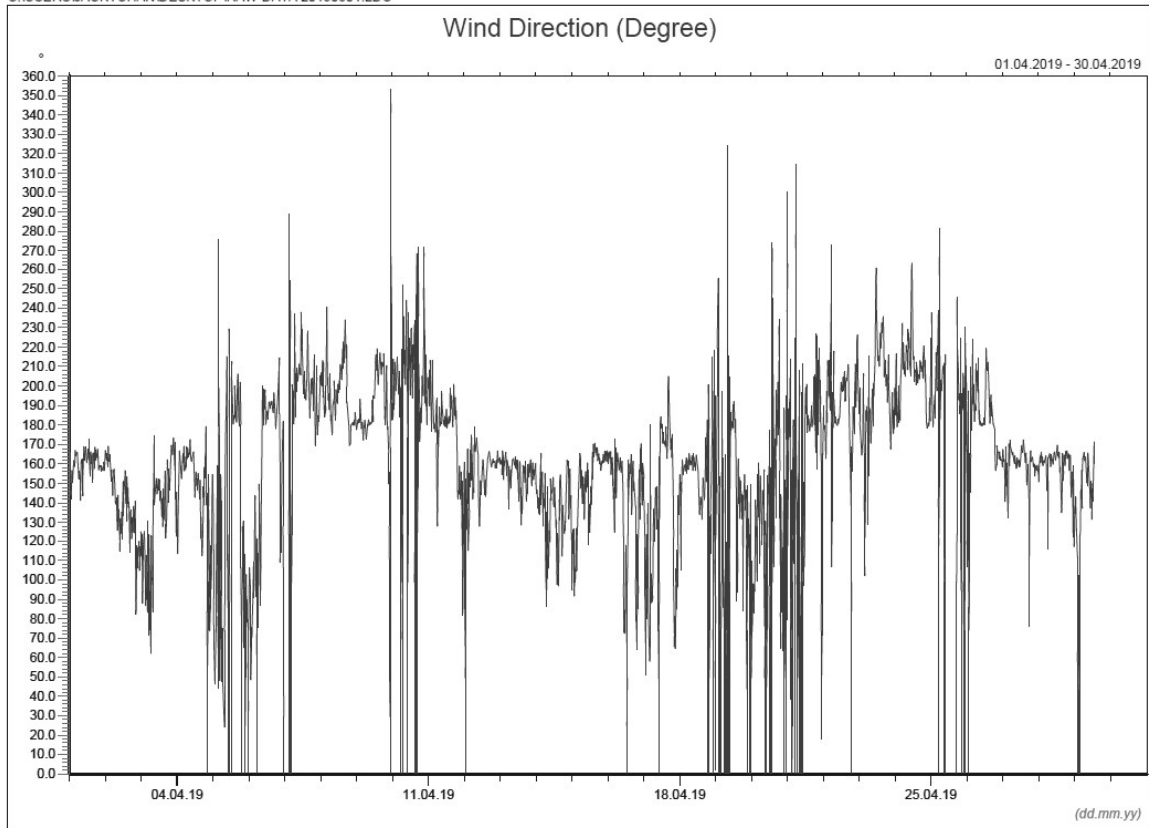


\* Note: Data on 20 April 2019 was discarded due to equipment failure.

C:\USERS\JACKYCHAN\DESKTOP\PIRAW DATA 20190501.LDC





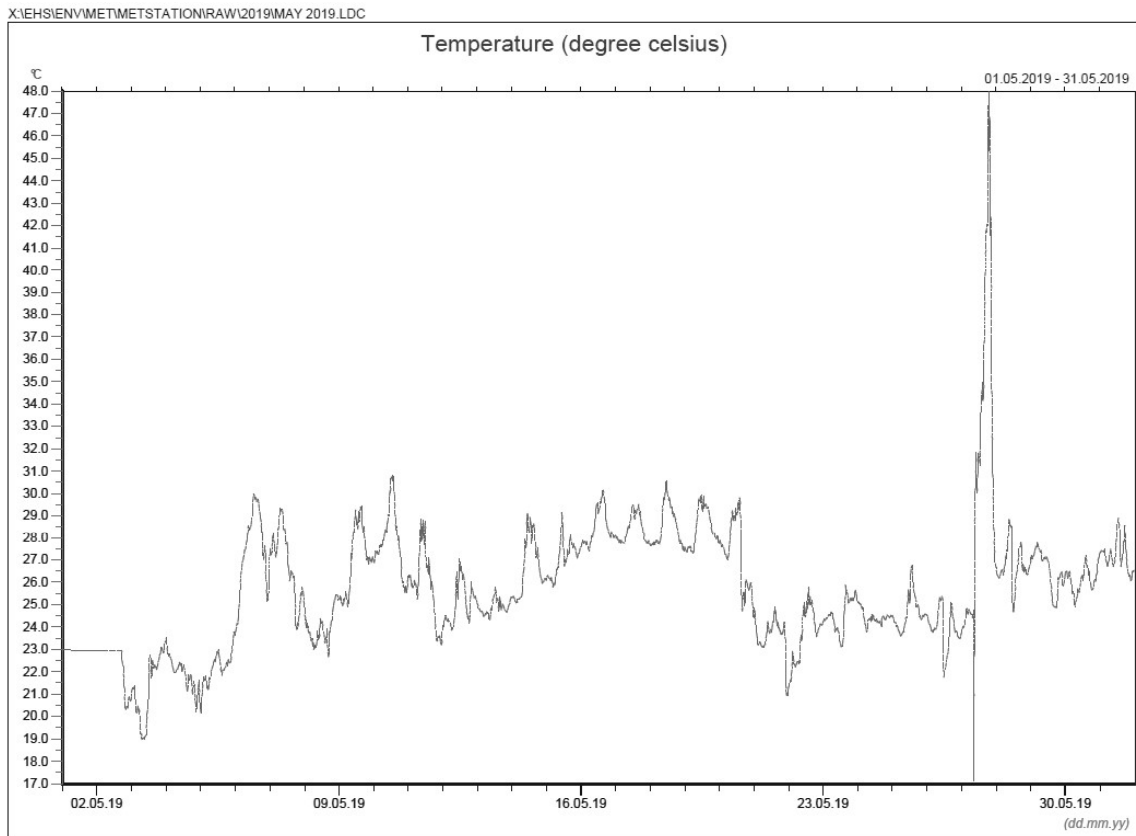


### Manual Rain Gauge Readings

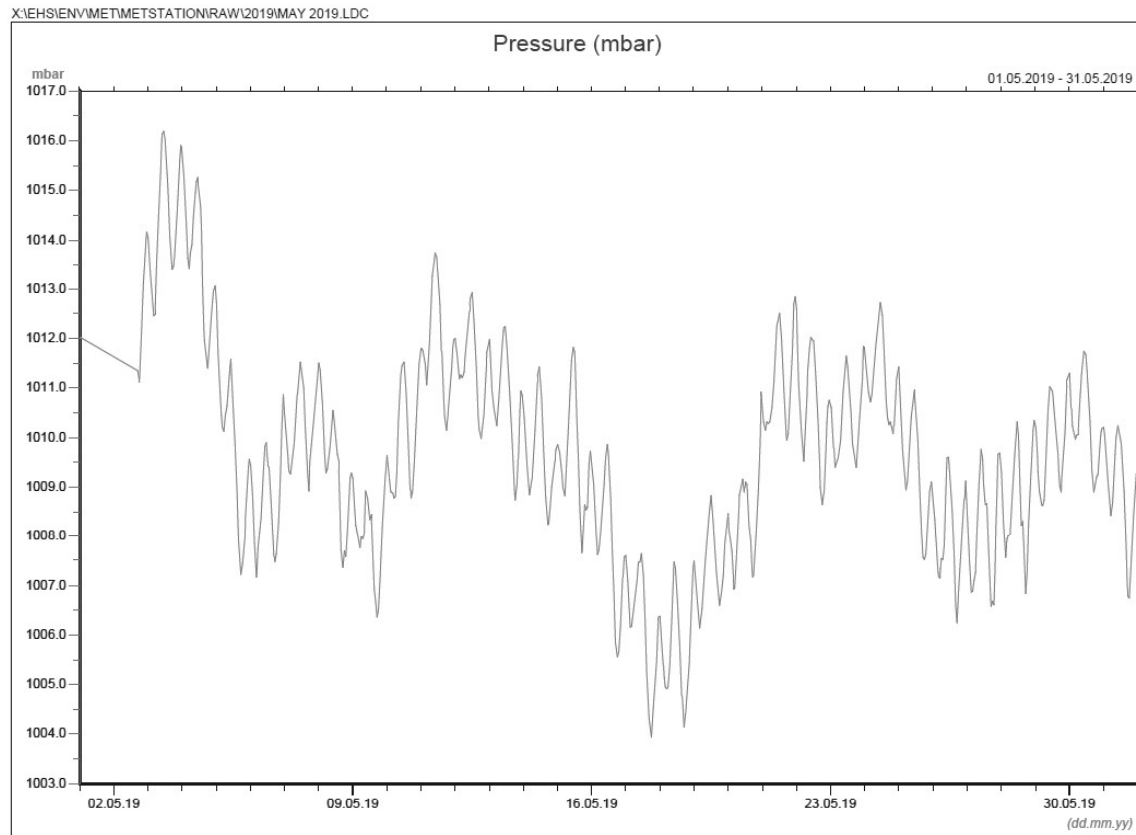
April 2019

| Date                  | Rainfall (mm) |
|-----------------------|---------------|
| 1 Apr 19              | 0.2           |
| 2 Apr 19              | 0.0           |
| 3 Apr 19              | 0.4           |
| 4 Apr 19              | 0.0           |
| 5 Apr 19              | 0.0           |
| 6 Apr 19              | 0.0           |
| 7 Apr 19              | 0.0           |
| 8 Apr 19              | 0.0           |
| 9 Apr 19              | 0.0           |
| 10 Apr 19             | 0.0           |
| 11 Apr 19             | 0.5           |
| 12 Apr 19             | 23.8          |
| 13 Apr 19             | 1.6           |
| 14 Apr 19             | 10.2          |
| 15 Apr 19             | 3.7           |
| 16 Apr 19             | 8.2           |
| 17 Apr 19             | 0.2           |
| 18 Apr 19             | 23.4          |
| 19 Apr 19             | 95.4          |
| 20 Apr 19             | 28.9          |
| 21 Apr 19             | 0.3           |
| 22 Apr 19             | 0.0           |
| 23 Apr 19             | 0.0           |
| 24 Apr 19             | 0.0           |
| 25 Apr 19             | 0.0           |
| 26 Apr 19             | 0.1           |
| 27 Apr 19             | 15.2          |
| 28 Apr 19             | 0.1           |
| 29 Apr 19             | 0.0           |
| 30 Apr 19             | 13.9          |
| <b>TOTAL RAINFALL</b> | <b>226.1</b>  |

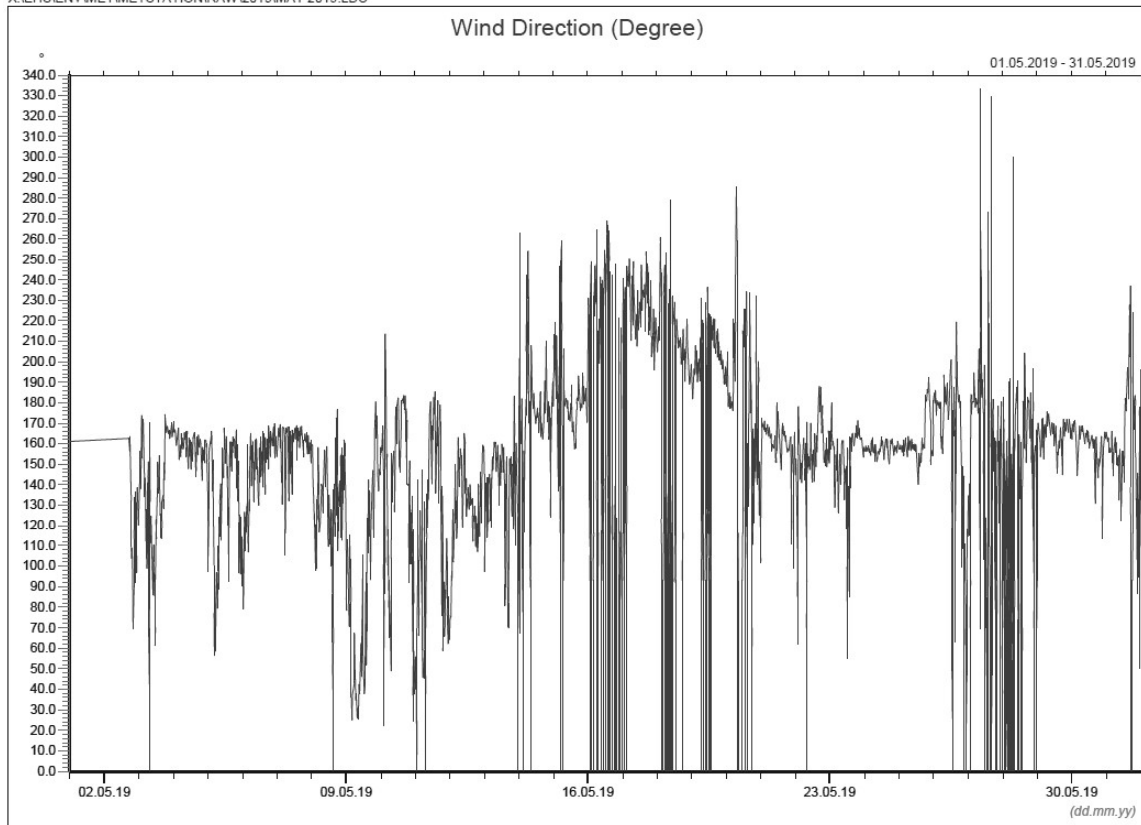
May 2019



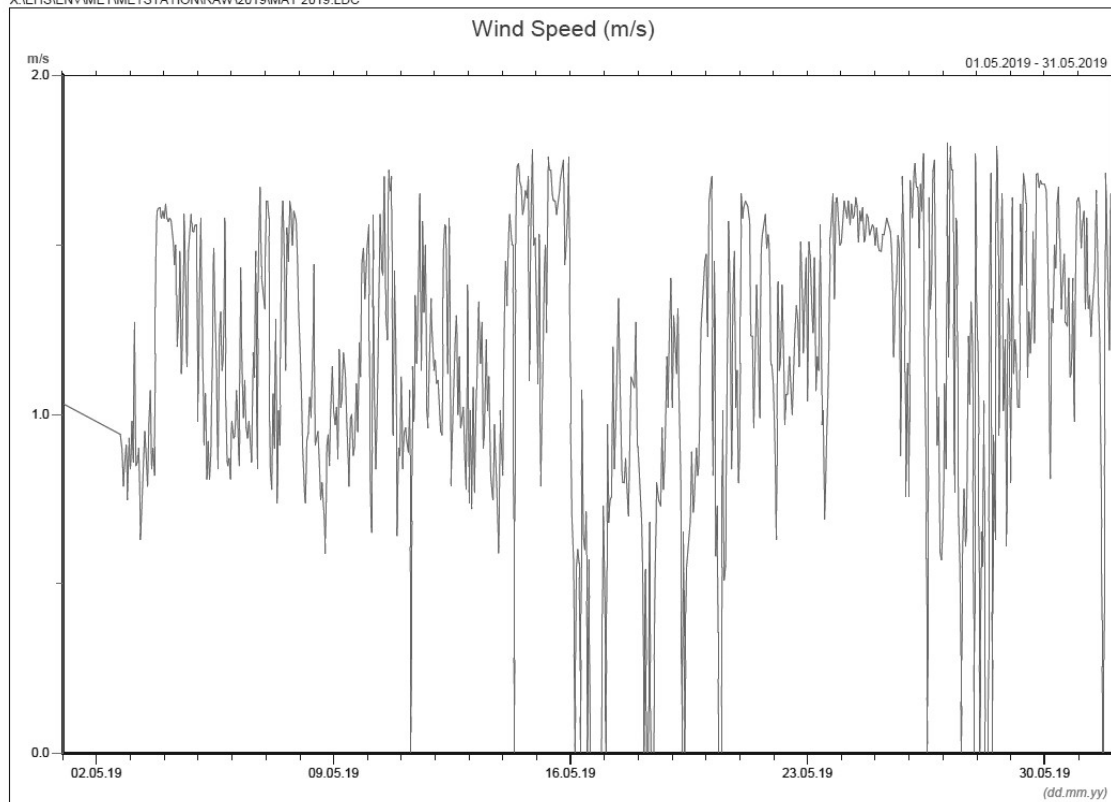
\* Note: Data from 1 May 00:00 to 2 May 2019 17:00 was lost due to malfunction of the meteorological station. Data on 27 May 2019 was discarded due to equipment failure.



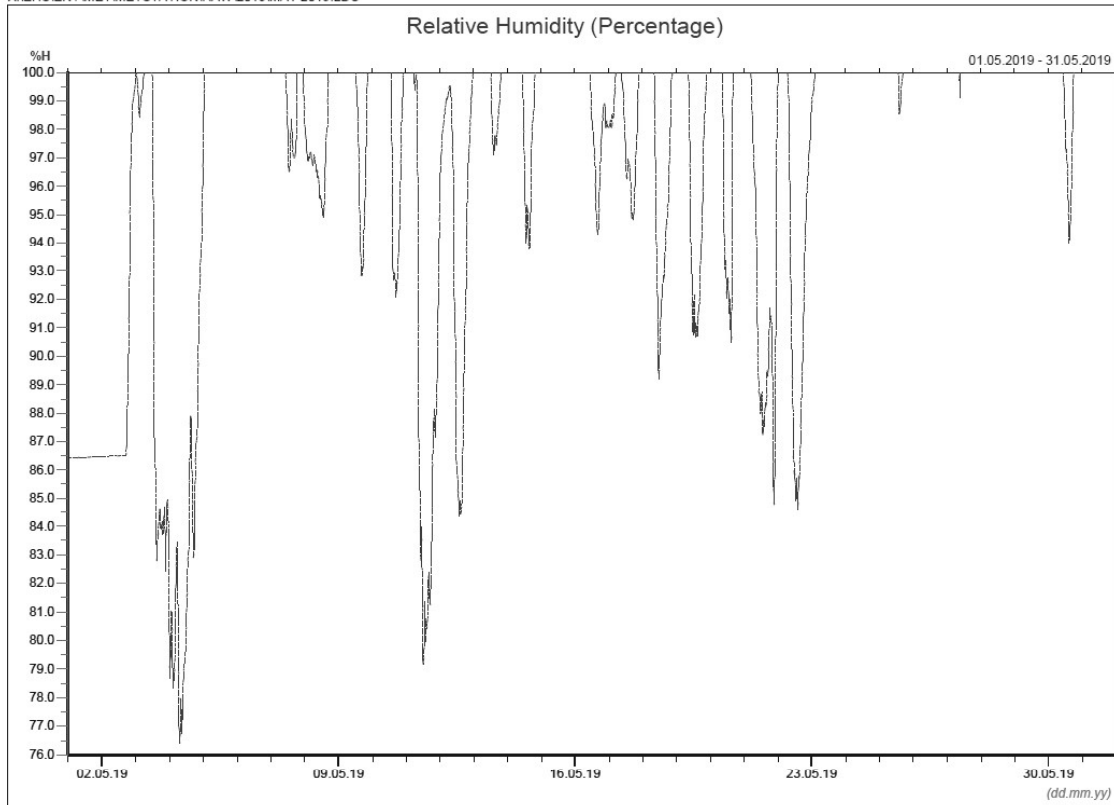
\* Note: Data from 1 May 00:00 to 2 May 2019 17:00 was lost due to malfunction of the meteorological station.



\* Note: Data from 1 May 00:00 to 2 May 2019 17:00 was lost due to malfunction of the meteorological station.



\* Note: Data from 1 May 00:00 to 2 May 2019 17:00 was lost due to malfunction of the meteorological station.



\* Note: Data from 1 May 00:00 to 2 May 2019 17:00 was lost due to malfunction of the meteorological station.

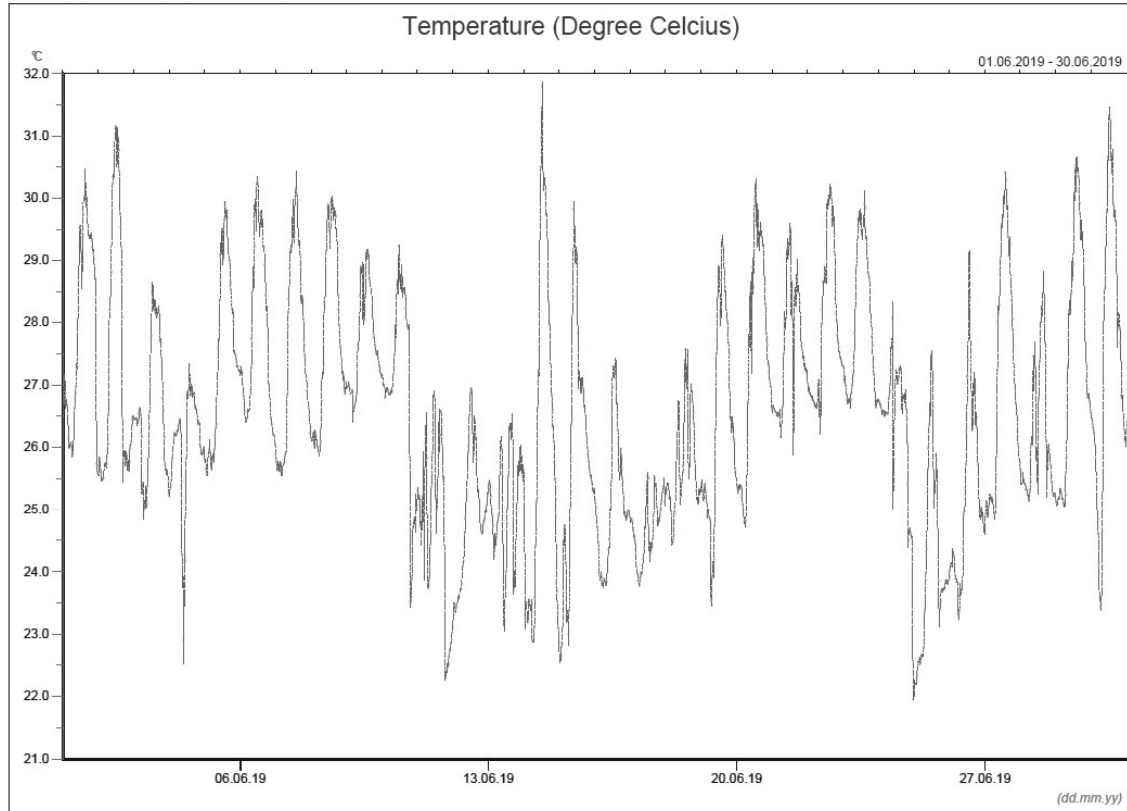
### Manual Rain Gauge Readings

May 2019

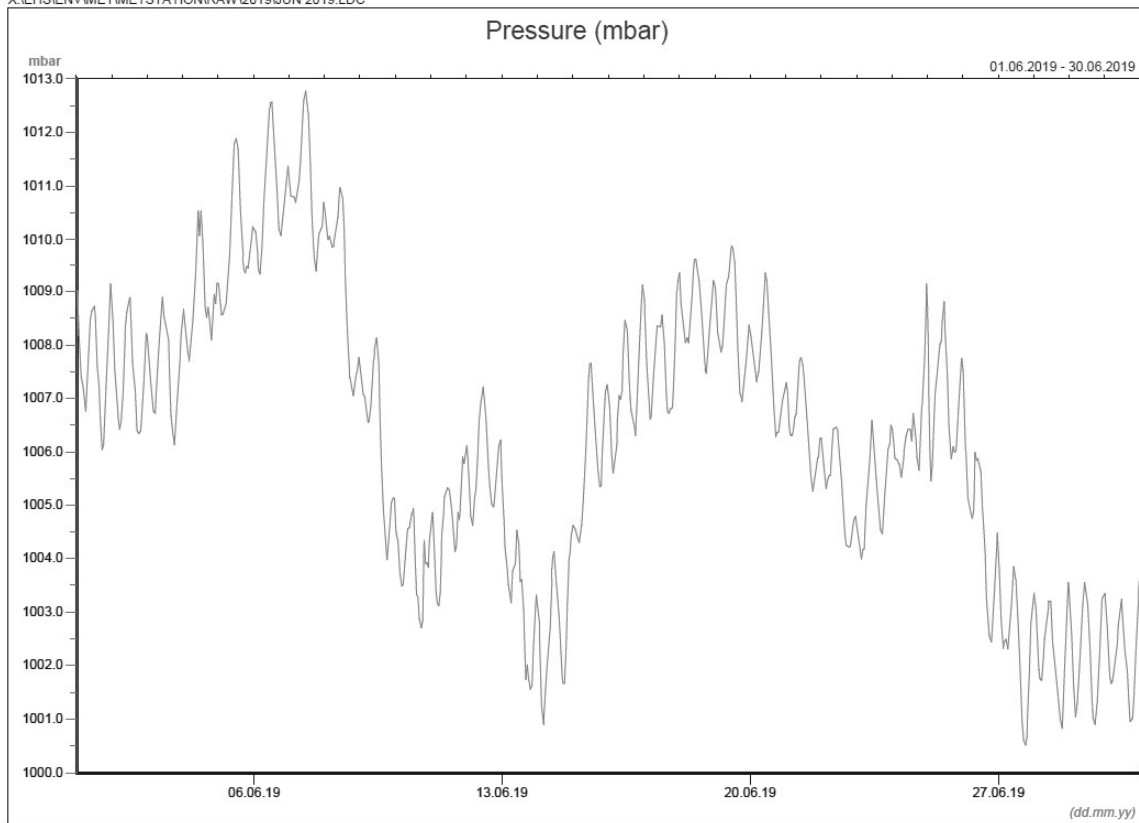
| Date                  | Rainfall (mm) |
|-----------------------|---------------|
| 1 May 19              | 2.8           |
| 2 May 19              | 9.5           |
| 3 May 19              | 0.1           |
| 4 May 19              | 34.4          |
| 5 May 19              | 14.0          |
| 6 May 19              | 21.7          |
| 7 May 19              | 23.7          |
| 8 May 19              | 37.0          |
| 9 May 19              | 0.1           |
| 10 May 19             | 0.0           |
| 11 May 19             | 0.0           |
| 12 May 19             | 0.4           |
| 13 May 19             | 0.1           |
| 14 May 19             | 0.0           |
| 15 May 19             | 0.0           |
| 16 May 19             | 0.0           |
| 17 May 19             | 0.0           |
| 18 May 19             | 0.0           |
| 19 May 19             | 0.0           |
| 20 May 19             | 20.2          |
| 21 May 19             | 15.1          |
| 22 May 19             | 2.0           |
| 23 May 19             | 51.0          |
| 24 May 19             | 0.8           |
| 25 May 19             | 6.2           |
| 26 May 19             | 19.2          |
| 27 May 19             | 18.6          |
| 28 May 19             | 34.7          |
| 29 May 19             | 26.6          |
| 30 May 19             | 3.0           |
| 31 May 19             | 47.4          |
| <b>TOTAL RAINFALL</b> | <b>388.6</b>  |

June 2019

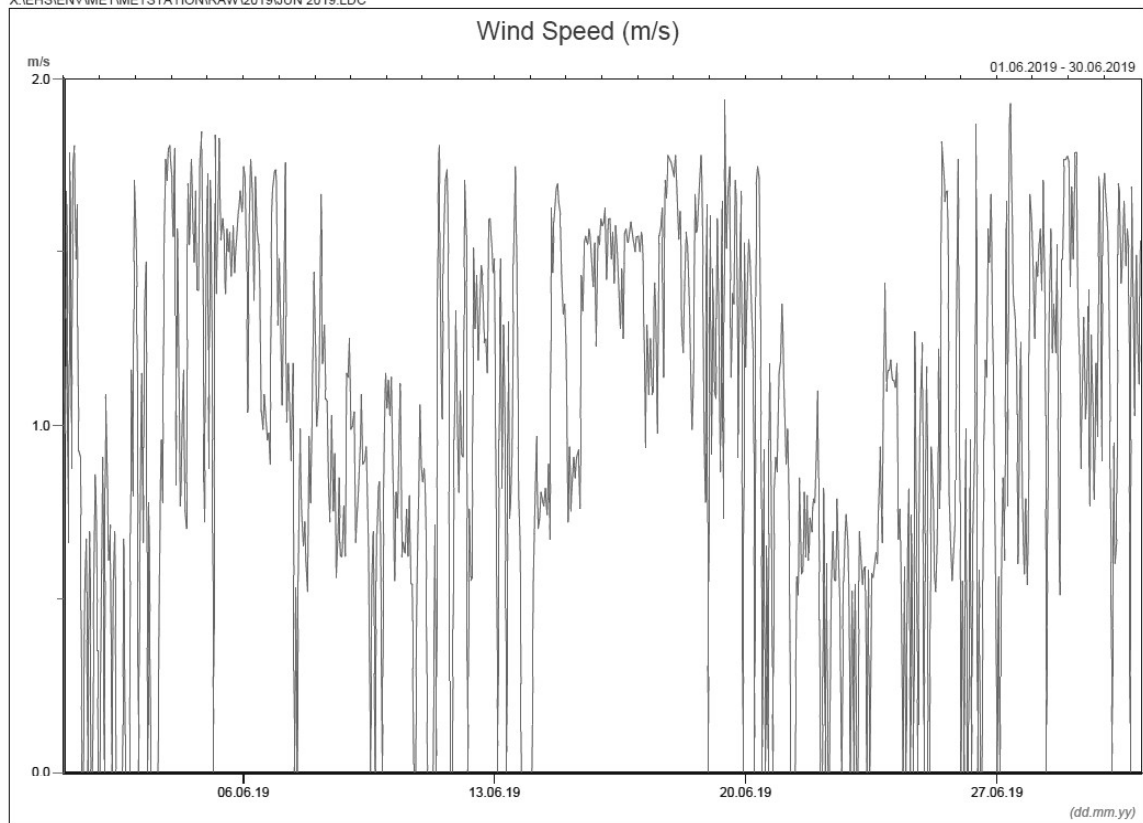
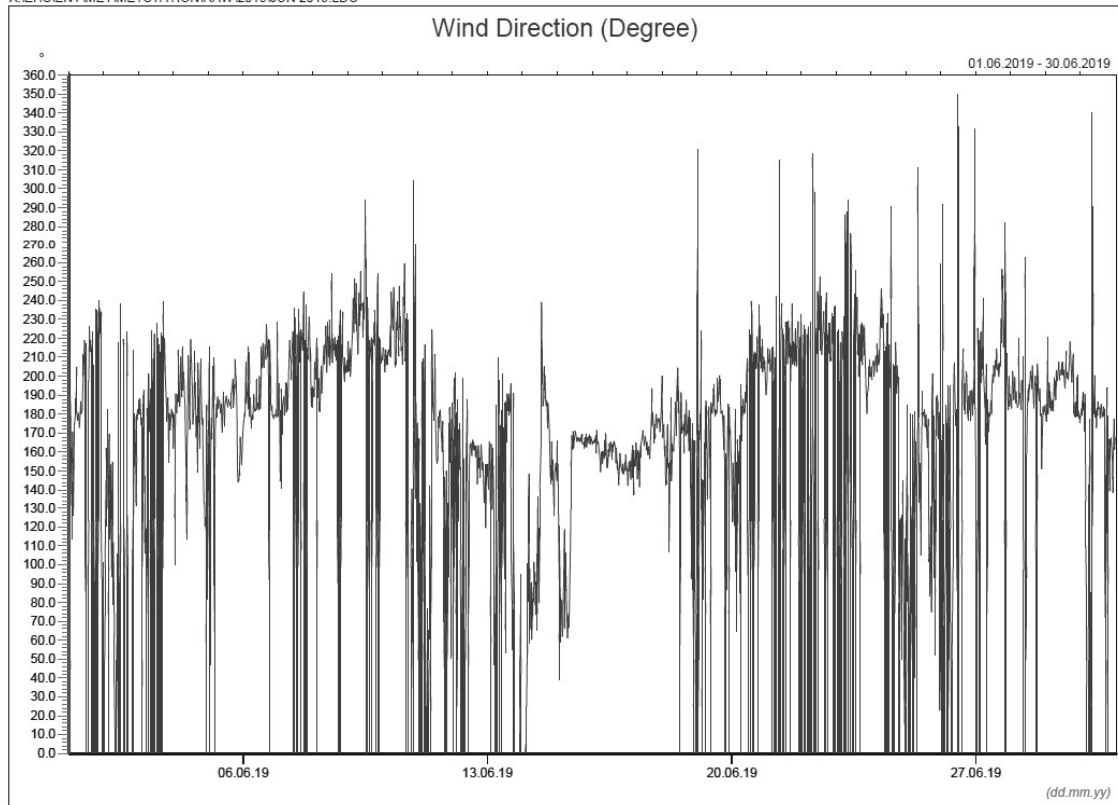
X:\EHS\ENV\MET\METSTATION\RAW\2019\JUN 2019.LDC

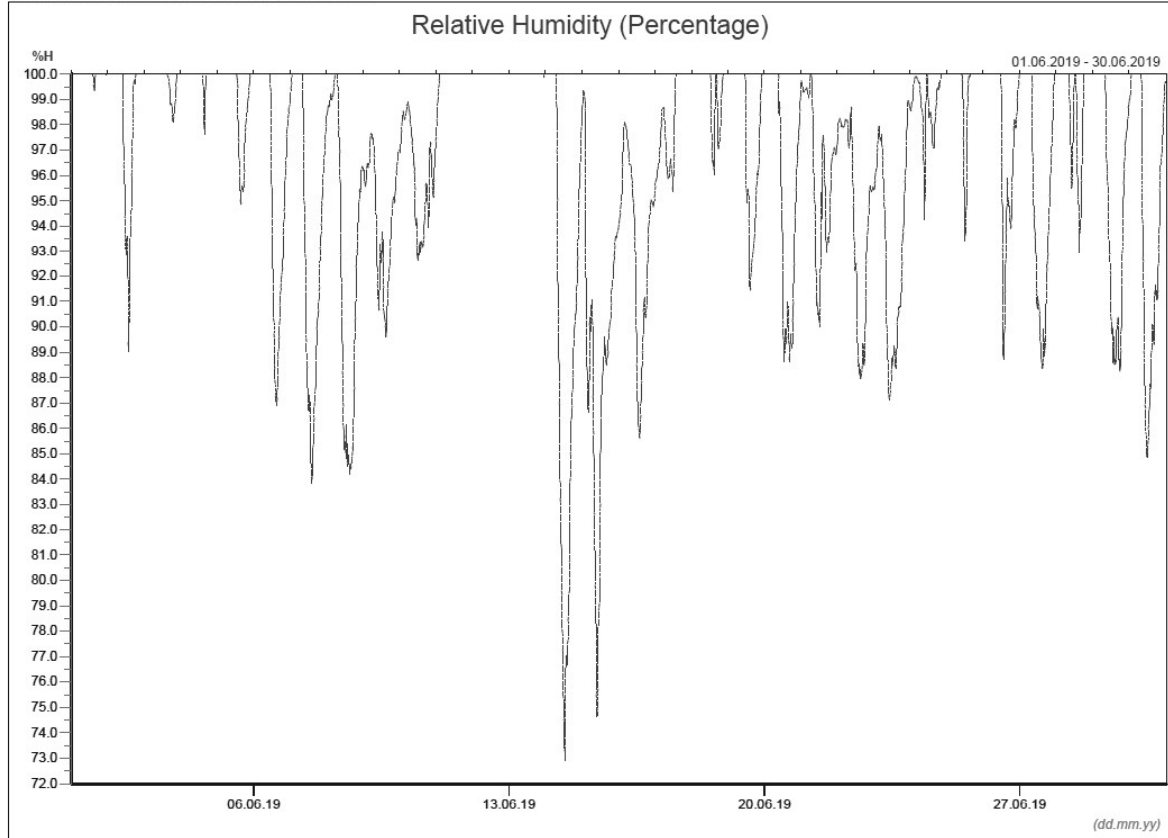


X:\EHS\ENV\MET\METSTATION\RAW\2019\JUN 2019.LDC









### Manual Rain Gauge Readings

June 2019

| Date                  | Rainfall<br>(mm) |
|-----------------------|------------------|
| 1 Jun 19              | 6.0              |
| 2 Jun 19              | 27.0             |
| 3 Jun 19              | 13.0             |
| 4 Jun 19              | 142.0            |
| 5 Jun 19              | 0.2              |
| 6 Jun 19              | 2.0              |
| 7 Jun 19              | 0.0              |
| 8 Jun 19              | 1.0              |
| 9 Jun 19              | 1.2              |
| 10 Jun 19             | 73.0             |
| 11 Jun 19             | 17.2             |
| 12 Jun 19             | 6.5              |
| 13 Jun 19             | 68.4             |
| 14 Jun 19             | 0.2              |
| 15 Jun 19             | 0.0              |
| 16 Jun 19             | 0.0              |
| 17 Jun 19             | 6.8              |
| 18 Jun 19             | 18.8             |
| 19 Jun 19             | 1.4              |
| 20 Jun 19             | 2.4              |
| 21 Jun 19             | 8.8              |
| 22 Jun 19             | 2.4              |
| 23 Jun 19             | 0.0              |
| 24 Jun 19             | 20.6             |
| 25 Jun 19             | 50.2             |
| 26 Jun 19             | 0.8              |
| 27 Jun 19             | 0.0              |
| 28 Jun 19             | 27.0             |
| 29 Jun 19             | 4.3              |
| 30 Jun 19             | 7.5              |
| <b>TOTAL RAINFALL</b> | <b>508.7</b>     |