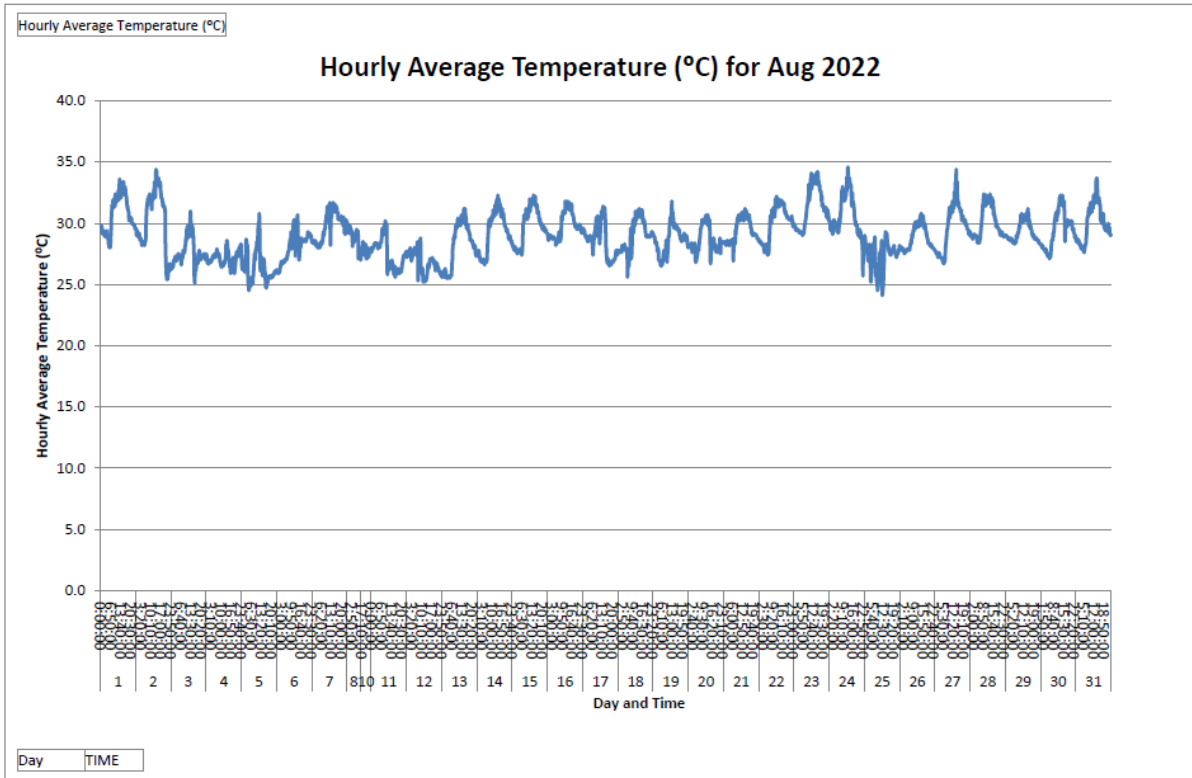


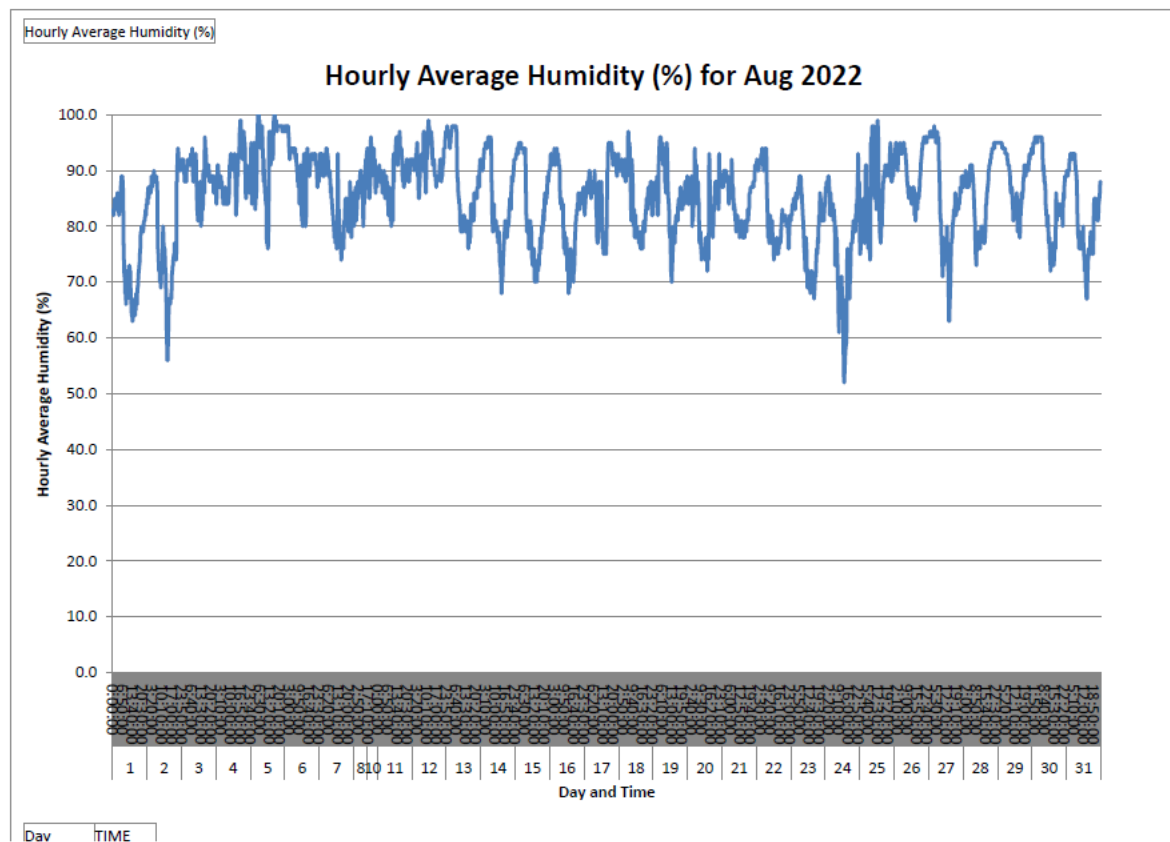
Annex D4

## Meteorological Data

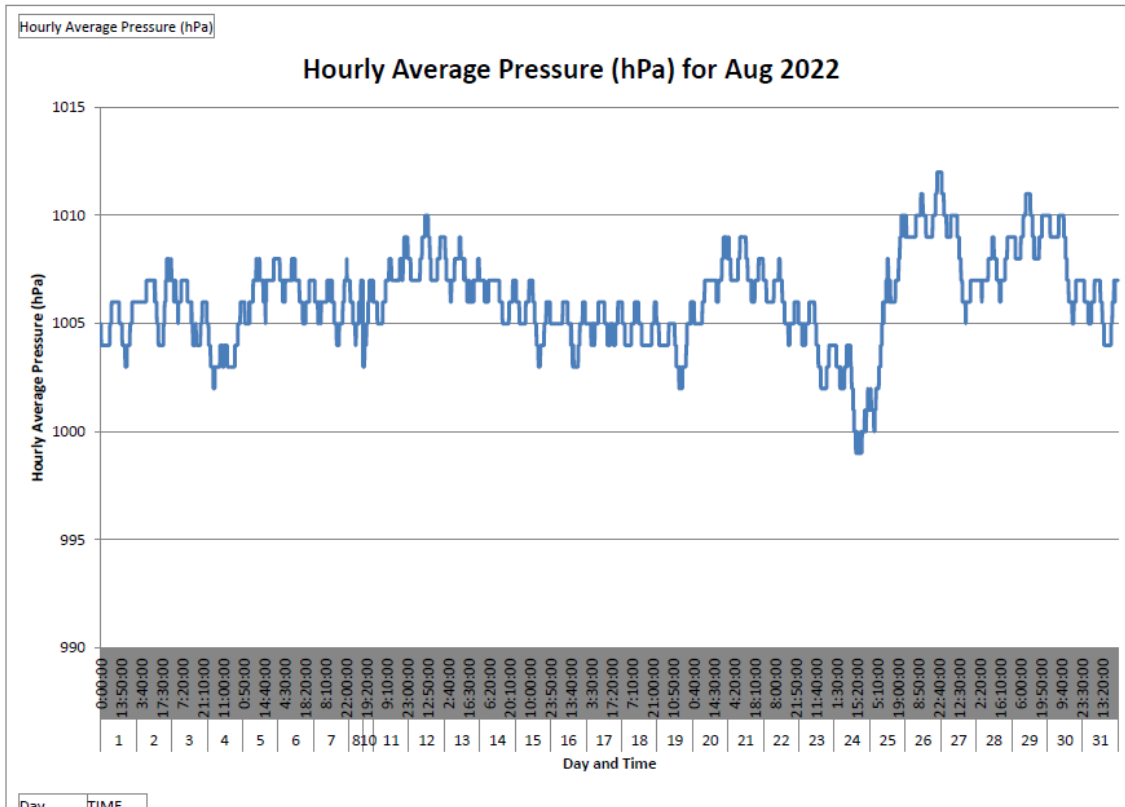
**Annex D4 Meteorological Data**



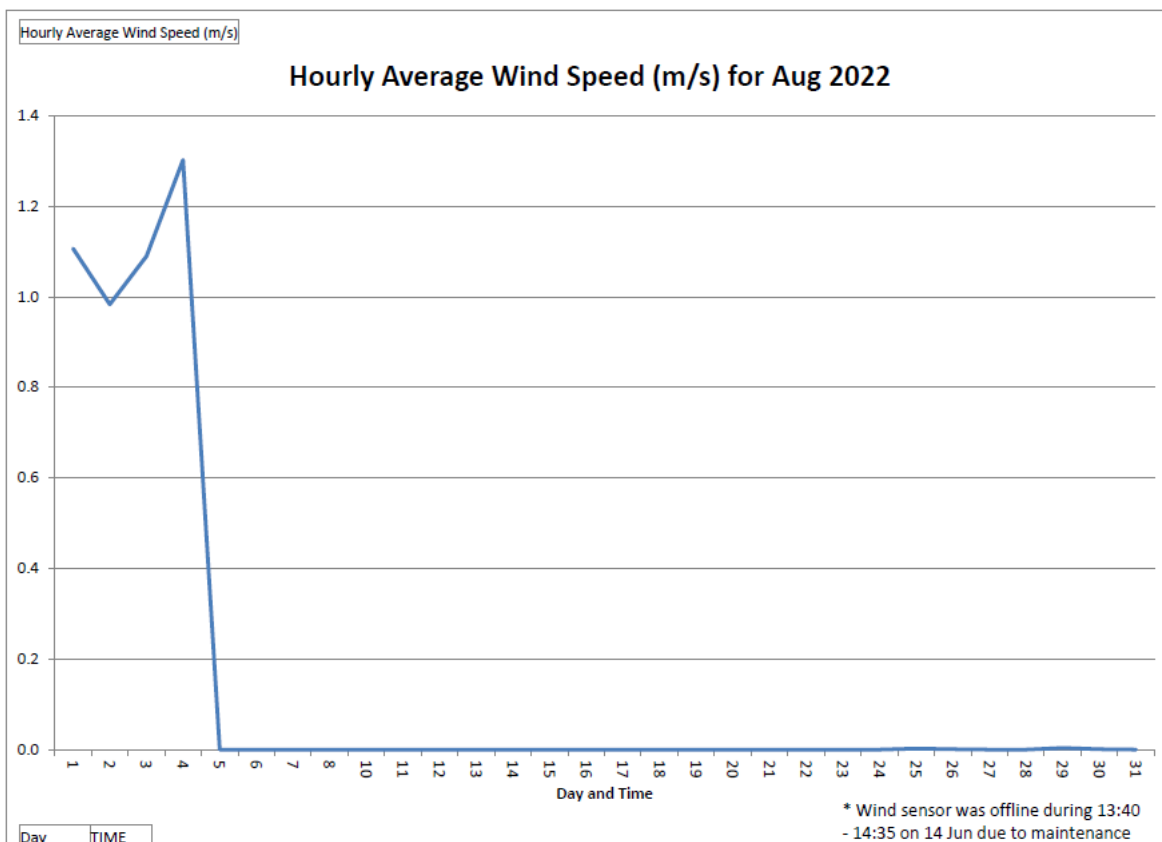
\*Remark: Due to the met station system failure on 8 Aug 2022, the data from 8 Aug 2022 - 09:20 to 10 Aug 2022 - 17:00 has been lost.



\*Remark: Due to the met station system failure on 8 Aug 2022, the data from 8 Aug 2022 - 09:20 to 10 Aug 2022 - 17:00 has been lost.

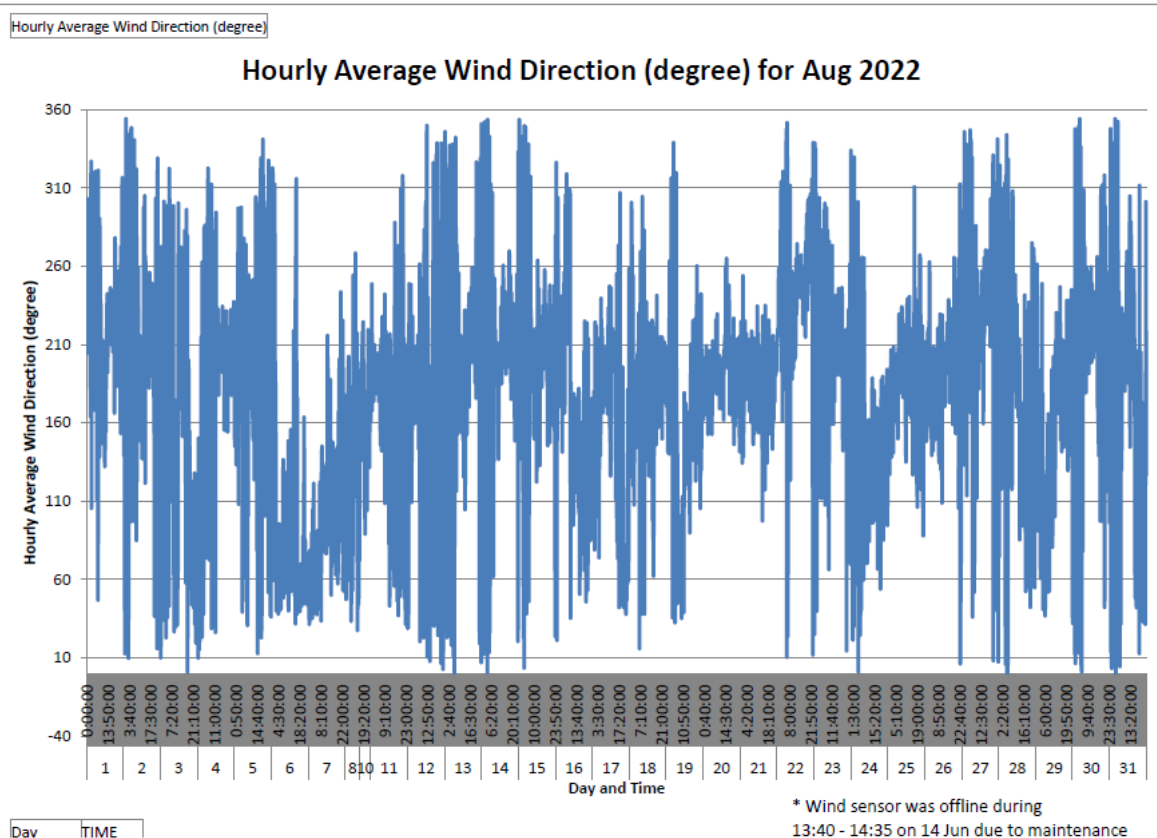


\*Remark: Due to the met station system failure on 8 Aug 2022, the data from 8 Aug 2022 - 09:20 to 10 Aug 2022 - 17:00 has been lost.

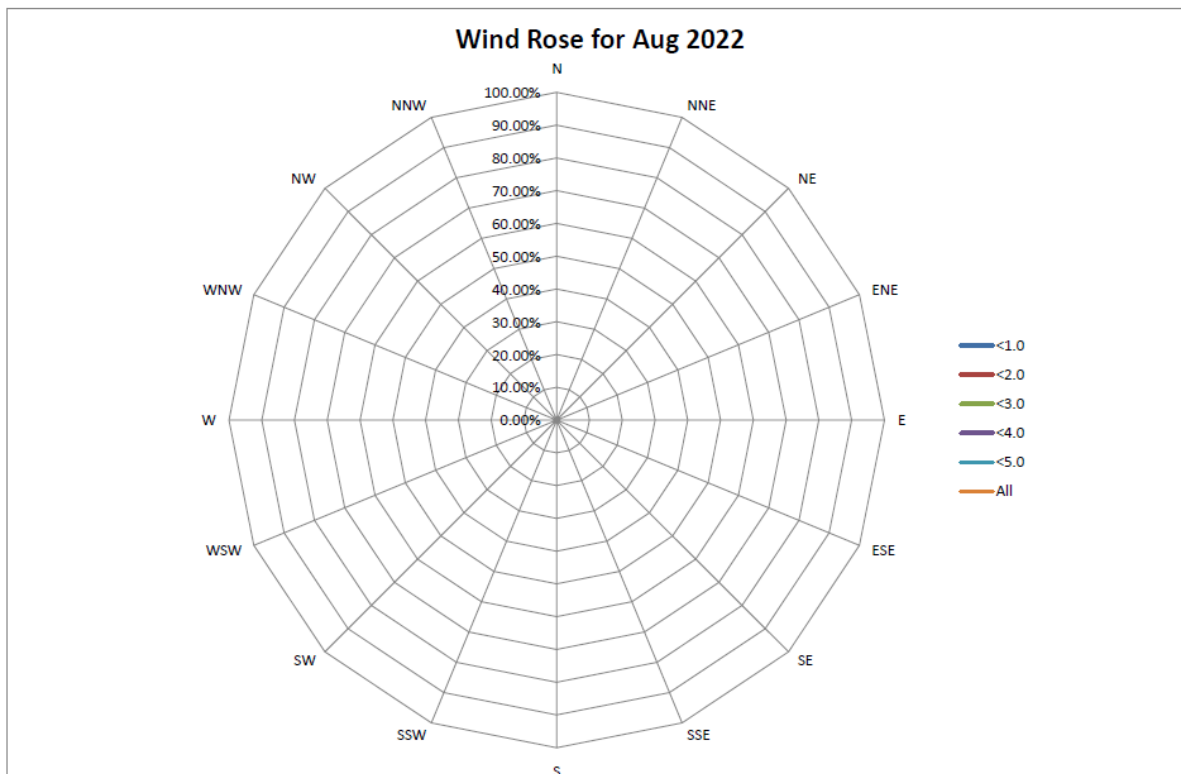


\* Wind sensor was offline during 13:40 - 14:35 on 14 Jun due to maintenance

\*Remark: Due to the Wind Speed Sensor has been disconnected on 4 Aug 2022, data loss in Aug 2022.  
 Due to the met station system failure on 8 Aug 2022, the data from 8 Aug 2022 - 09:20 to 10 Aug 2022 - 17:00 has been lost.  
 - Data from 5 Aug 2022 to 31 Aug 2022 is pending from Hong Kong Observatory and to be supplemented in subsequent version.

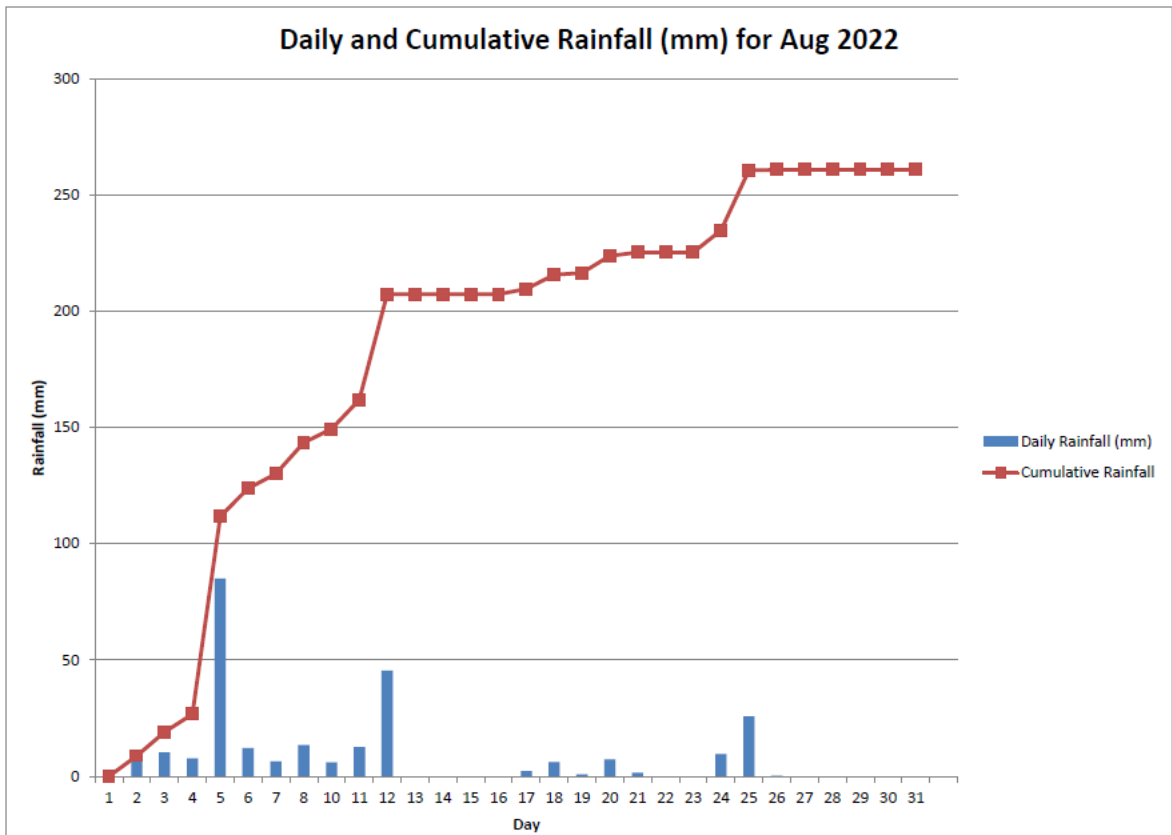


\*Remark: Due to the met station system failure on 8 Aug 2022, the data from 8 Aug 2022 - 09:20 to 10 Aug 2022 - 17:00 has been lost.



\*Remark: Due to the Wind Speed Sensor has been disconnected on 4 Aug 2022, data loss in Aug 2022.

- Data from 5 Aug 2022 to 31 Aug 2022 is pending from Hong Kong Observatory and to be supplemented in subsequent version.



\*Remark: Due to the met station system failure on 8 Aug 2022, the data from 8 Aug 2022 - 09:20 to 10 Aug 2022 - 17:00 has been lost.