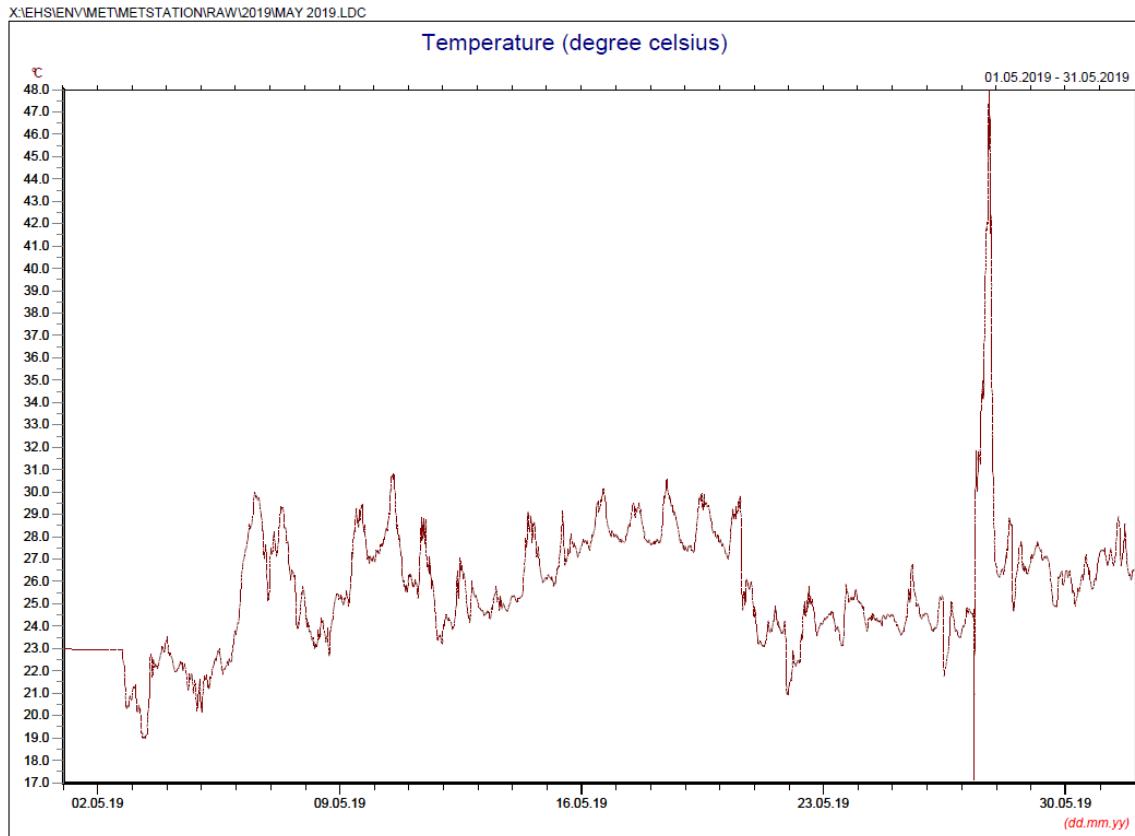


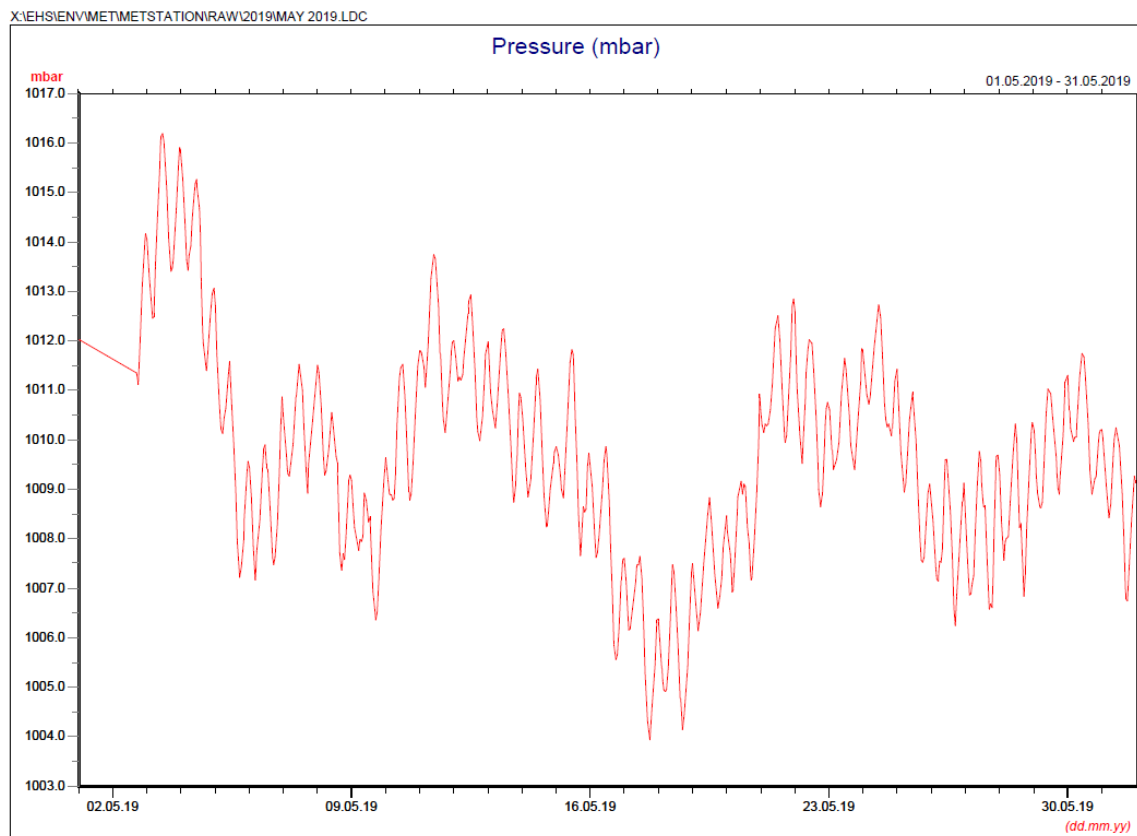
Annex D4

Meteorological Data

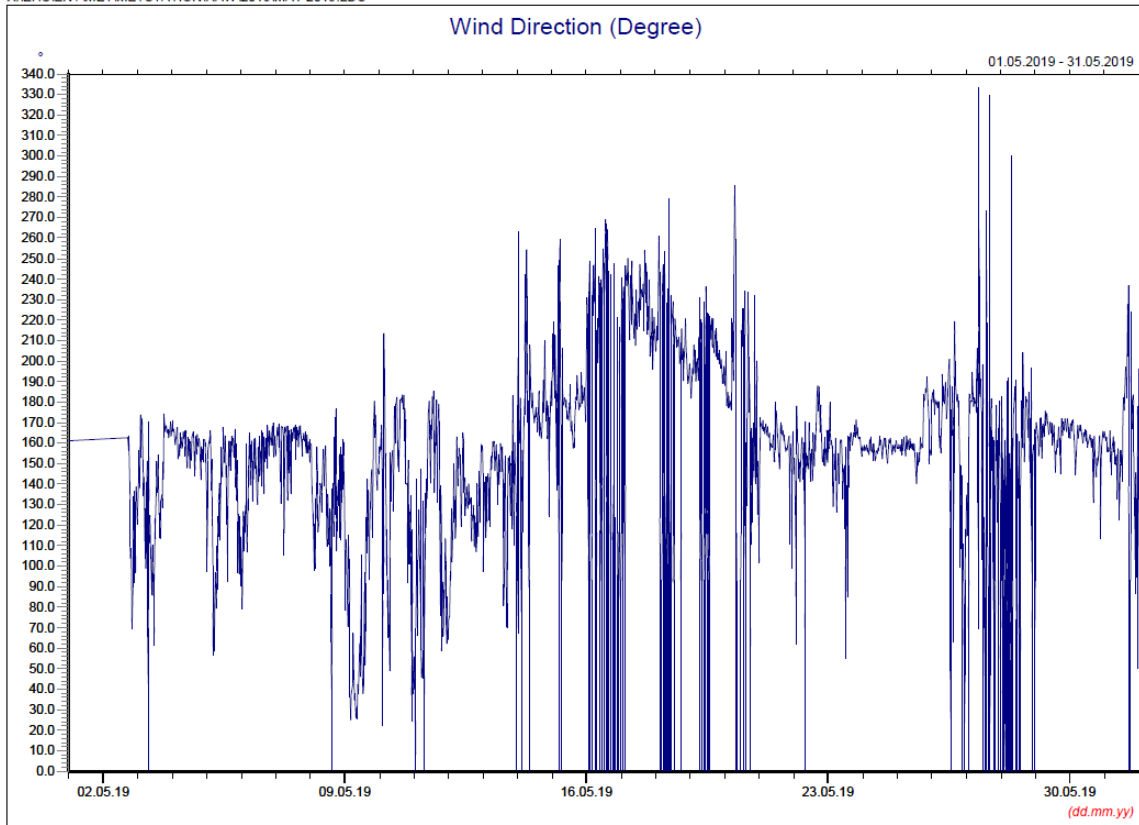
Annex D4 Meteorological Data



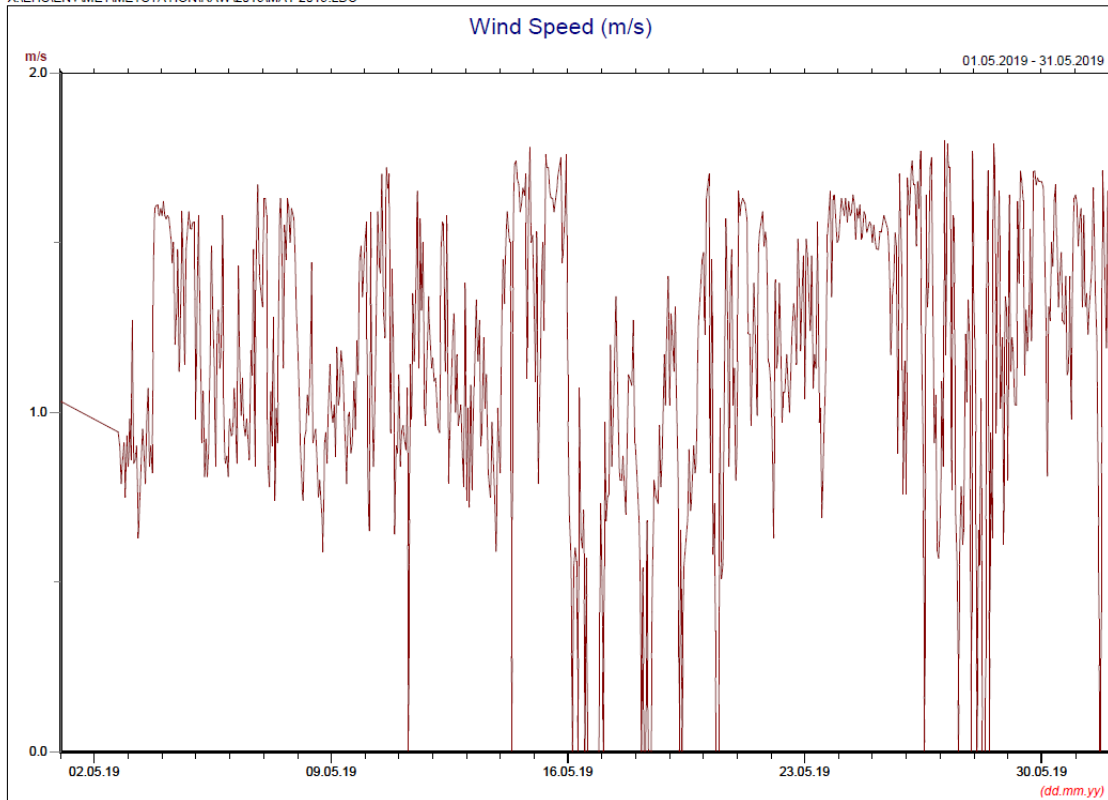
* Note: Data from 1 May 00:00 to 2 May 2019 17:00 was lost due to malfunction of the meteorological station. Data on 27 May 2019 was discarded due to equipment failure.



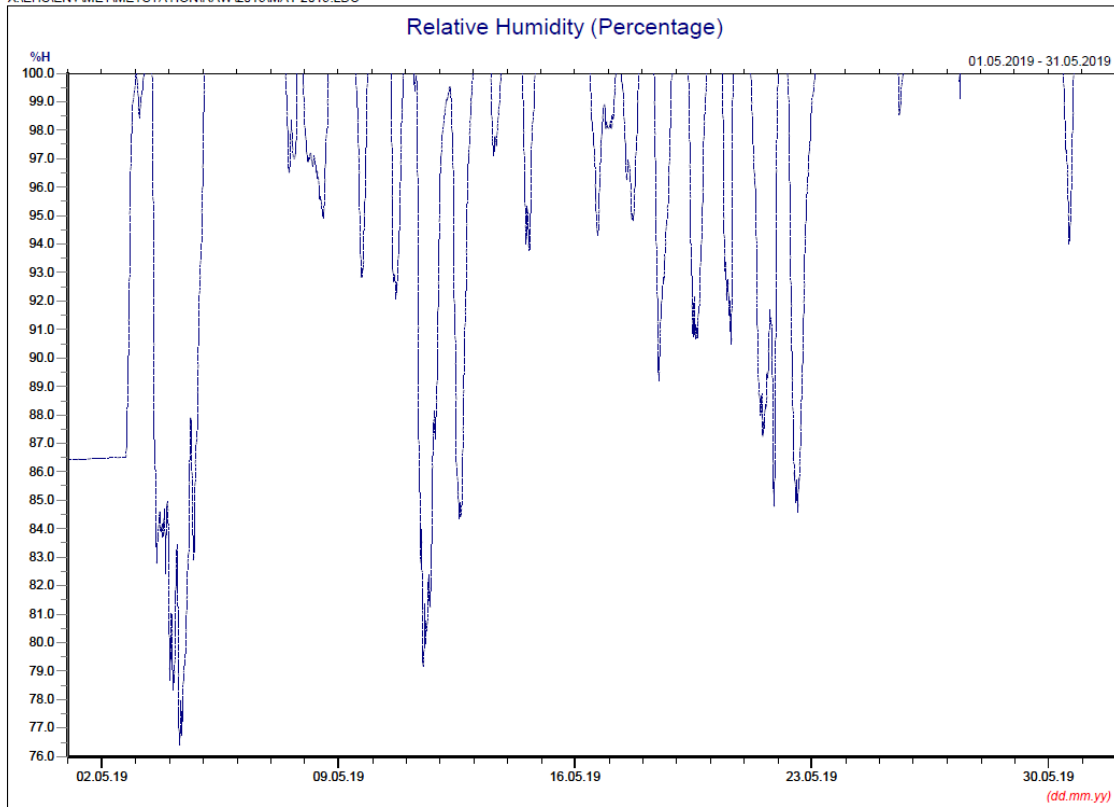
* Note: Data from 1 May 00:00 to 2 May 2019 17:00 was lost due to malfunction of the meteorological station.



* Note: Data from 1 May 00:00 to 2 May 2019 17:00 was lost due to malfunction of the meteorological station.



* Note: Data from 1 May 00:00 to 2 May 2019 17:00 was lost due to malfunction of the meteorological station.



* Note: Data from 1 May 00:00 to 2 May 2019 17:00 was lost due to malfunction of the meteorological station.

Manual Rain Gauge Readings

May 2019

Date	Rainfall (mm)
1 May 19	2.8
2 May 19	9.5
3 May 19	0.1
4 May 19	34.4
5 May 19	14.0
6 May 19	21.7
7 May 19	23.7
8 May 19	37.0
9 May 19	0.1
10 May 19	0.0
11 May 19	0.0
12 May 19	0.4
13 May 19	0.1
14 May 19	0.0
15 May 19	0.0
16 May 19	0.0
17 May 19	0.0
18 May 19	0.0
19 May 19	0.0
20 May 19	20.2
21 May 19	15.1
22 May 19	2.0
23 May 19	51.0
24 May 19	0.8
25 May 19	6.2
26 May 19	19.2
27 May 19	18.6
28 May 19	34.7
29 May 19	26.6
30 May 19	3.0
31 May 19	47.4
TOTAL RAINFALL	388.6