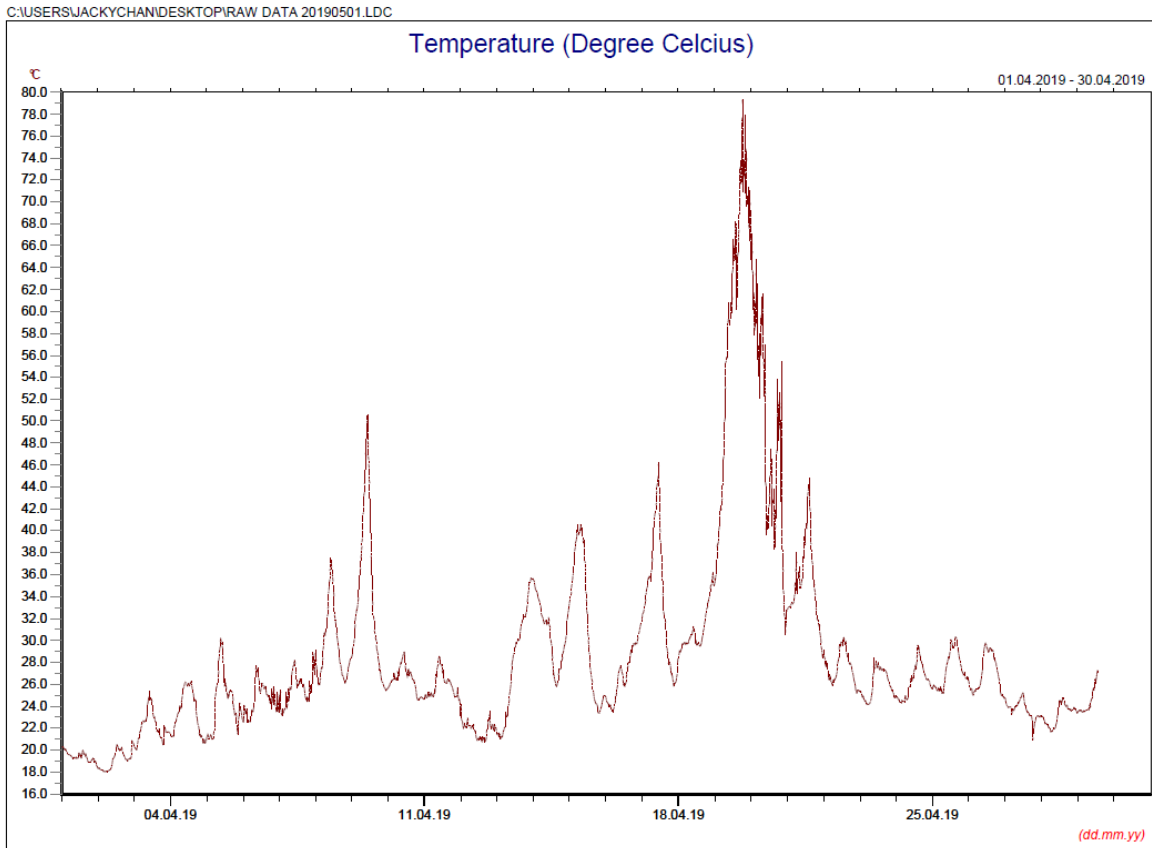


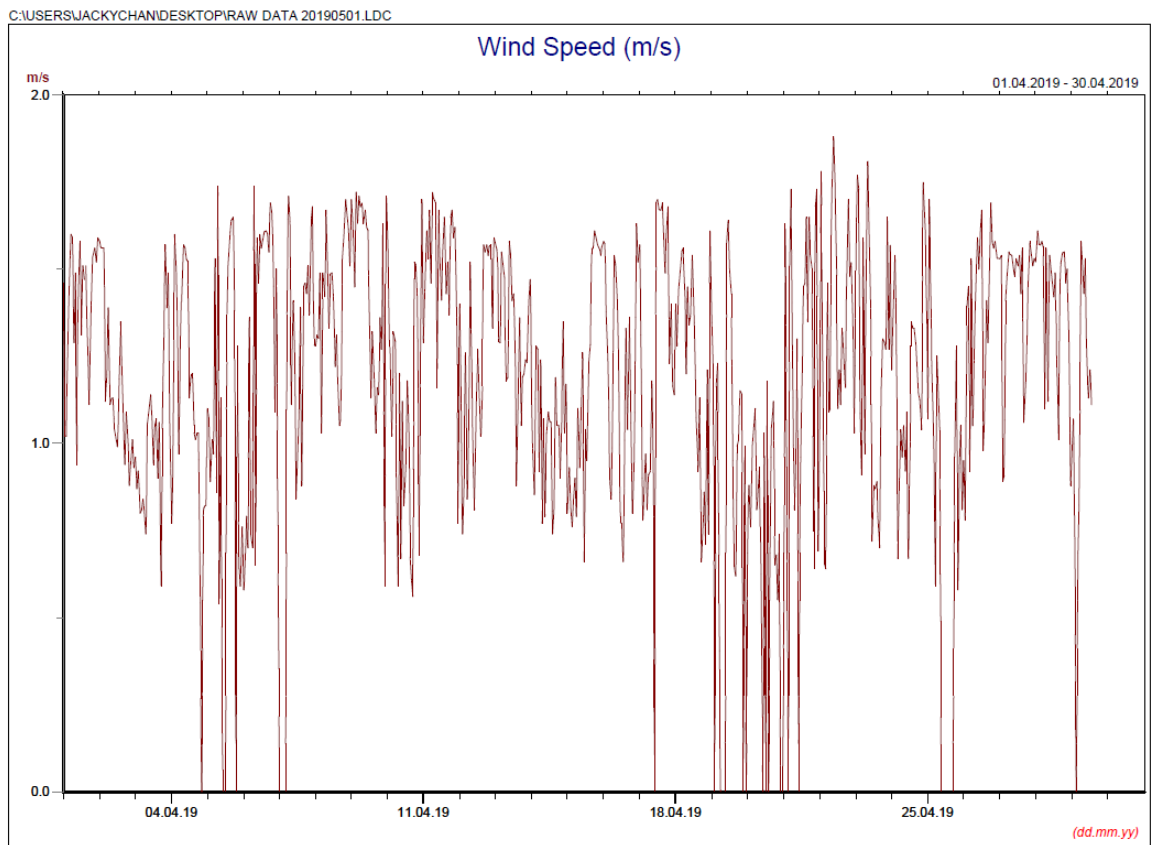
Annex D4

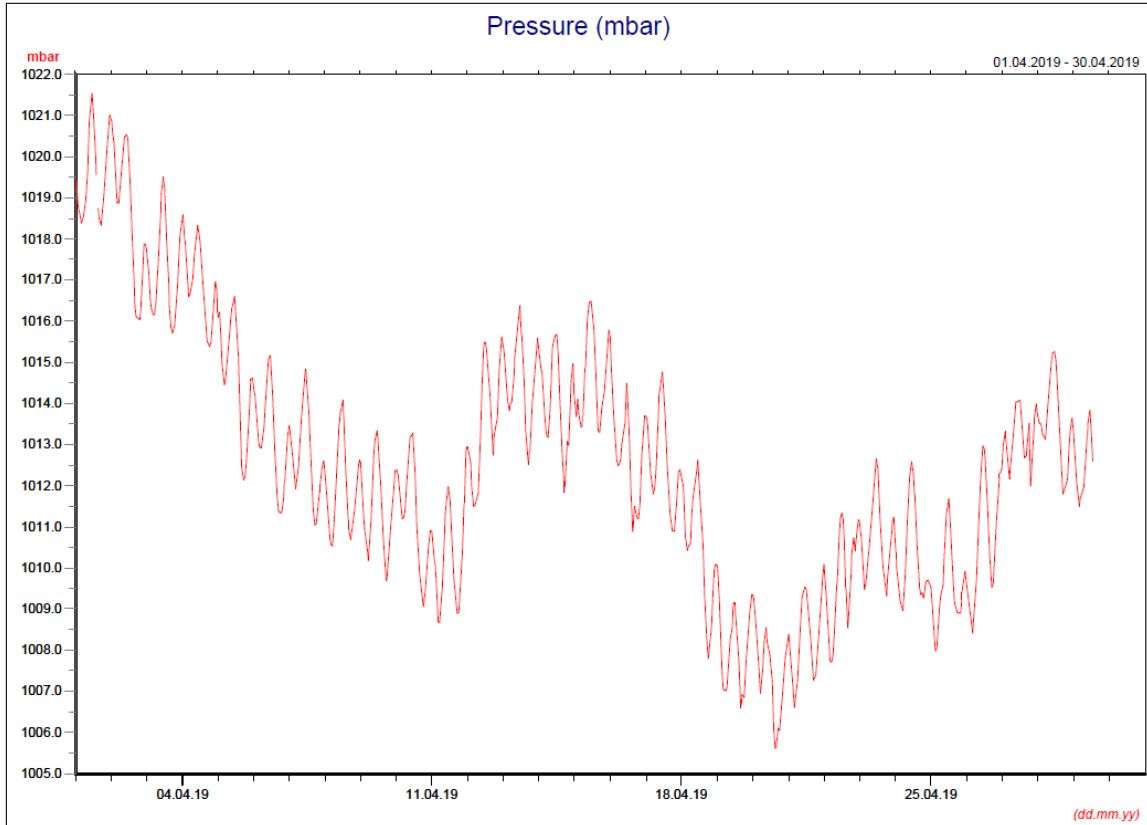
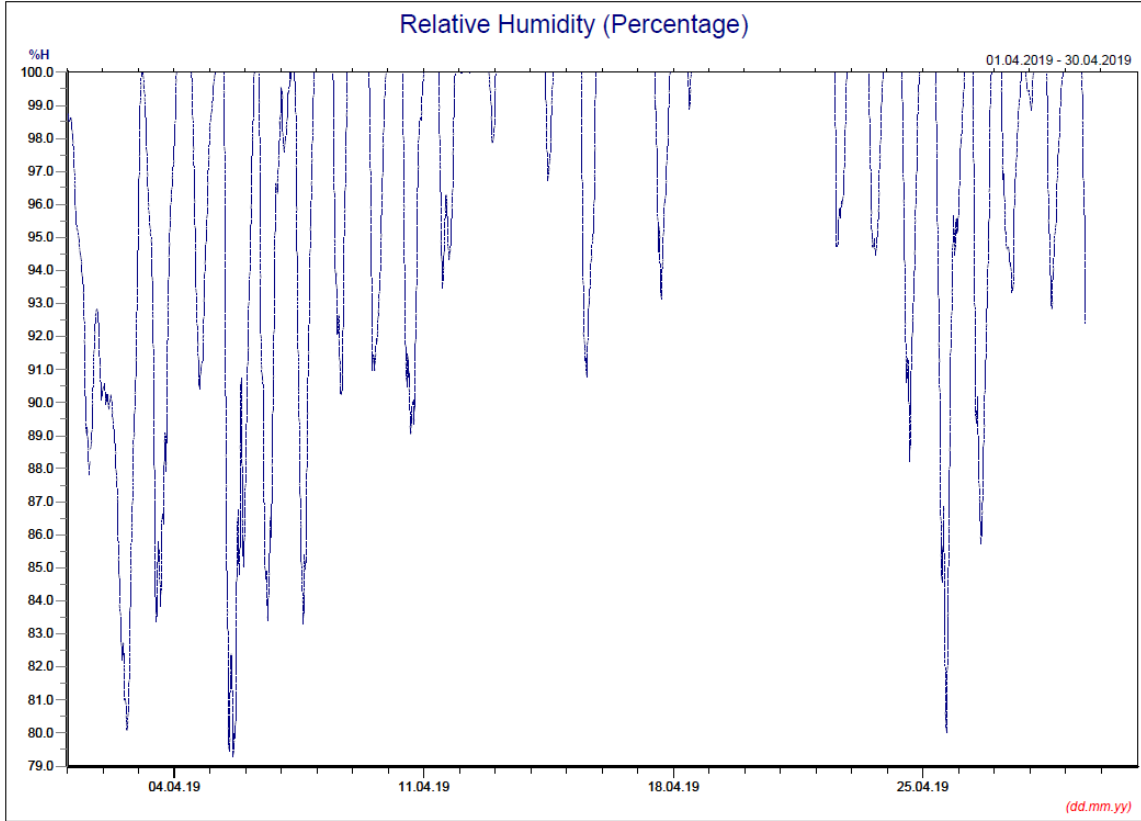
Meteorological Data

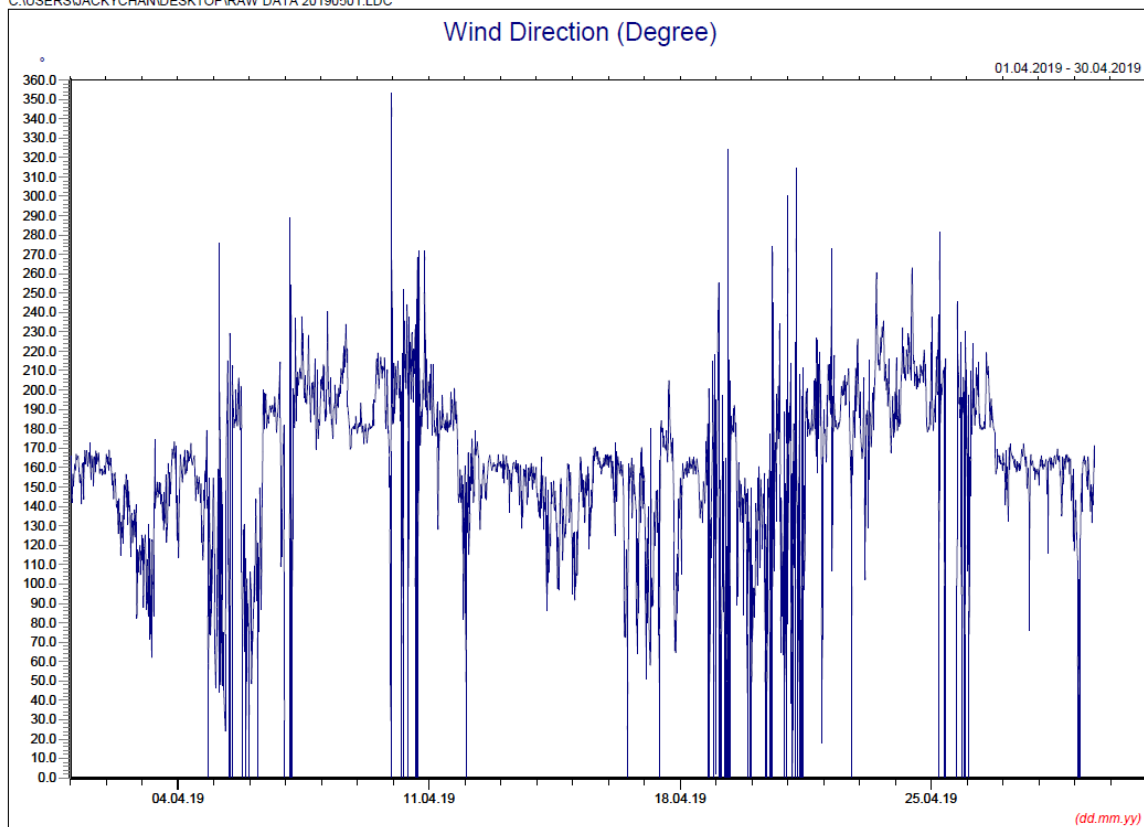
Annex D4 Meteorological Data



* Note: Data on 20 April 2019 was discarded due to equipment failure.







Manual Rain Gauge Readings

April 2019

Date	Rainfall (mm)
1 Apr 19	0.2
2 Apr 19	0.0
3 Apr 19	0.4
4 Apr 19	0.0
5 Apr 19	0.0
6 Apr 19	0.0
7 Apr 19	0.0
8 Apr 19	0.0
9 Apr 19	0.0
10 Apr 19	0.0
11 Apr 19	0.5
12 Apr 19	23.8
13 Apr 19	1.6
14 Apr 19	10.2
15 Apr 19	3.7
16 Apr 19	8.2
17 Apr 19	0.2
18 Apr 19	23.4
19 Apr 19	95.4
20 Apr 19	28.9
21 Apr 19	0.3
22 Apr 19	0.0
23 Apr 19	0.0
24 Apr 19	0.0
25 Apr 19	0.0
26 Apr 19	0.1
27 Apr 19	15.2
28 Apr 19	0.1
29 Apr 19	0.0
30 Apr 19	13.9
TOTAL RAINFALL	226.1