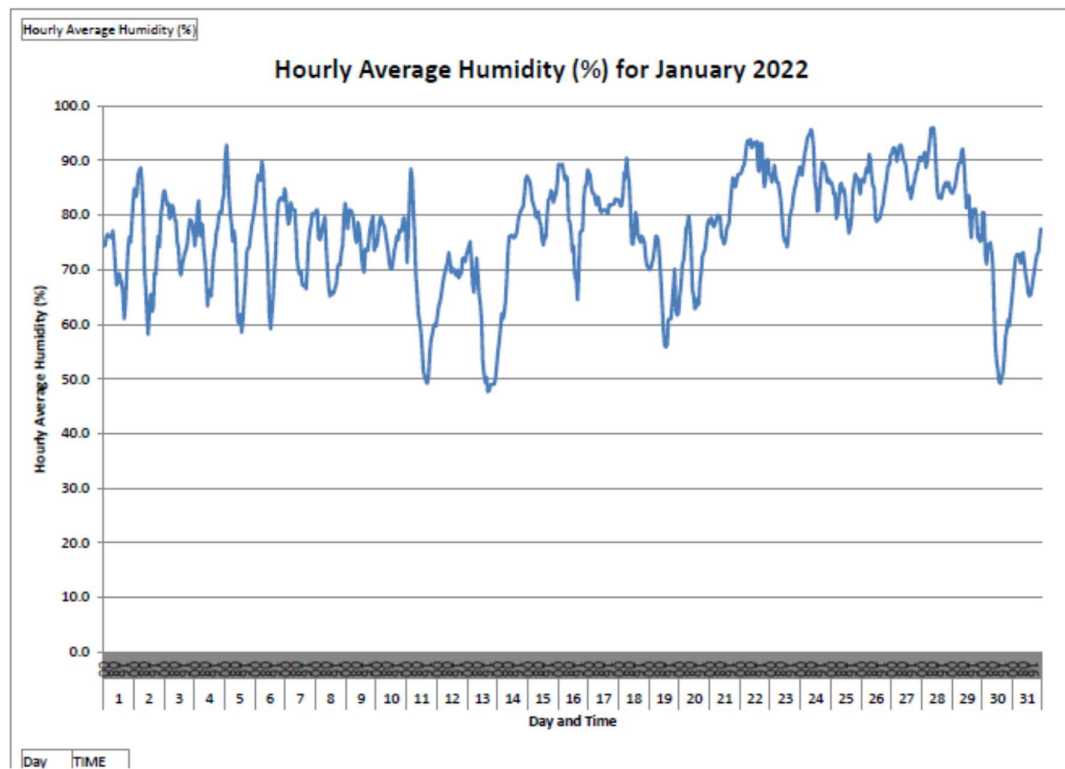
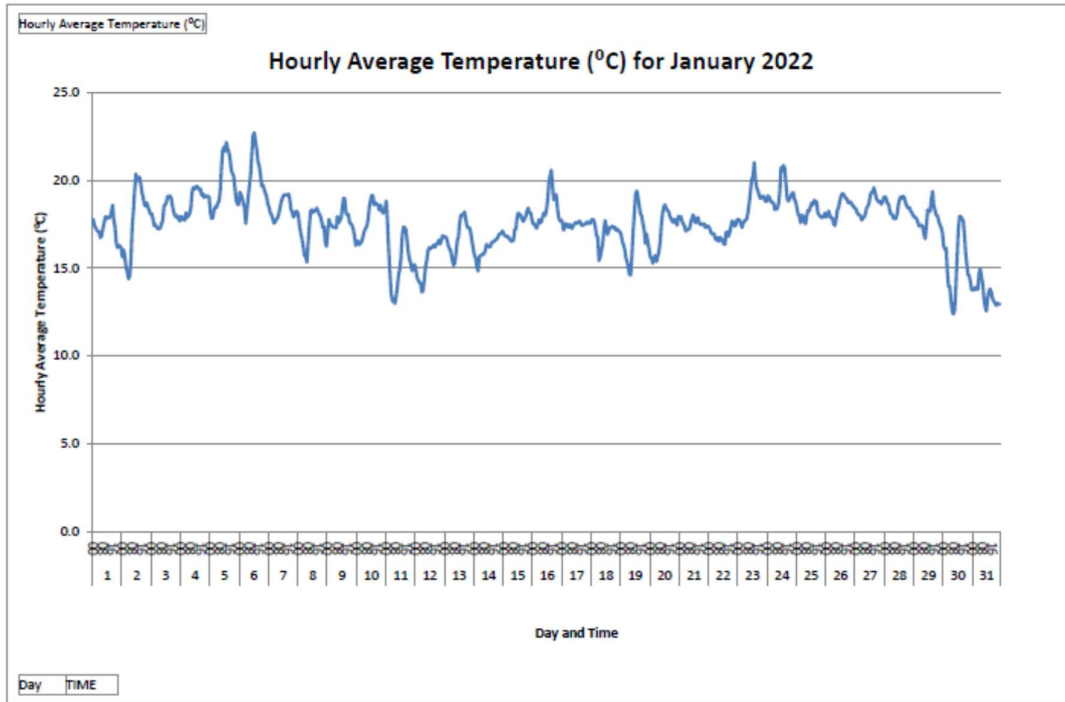


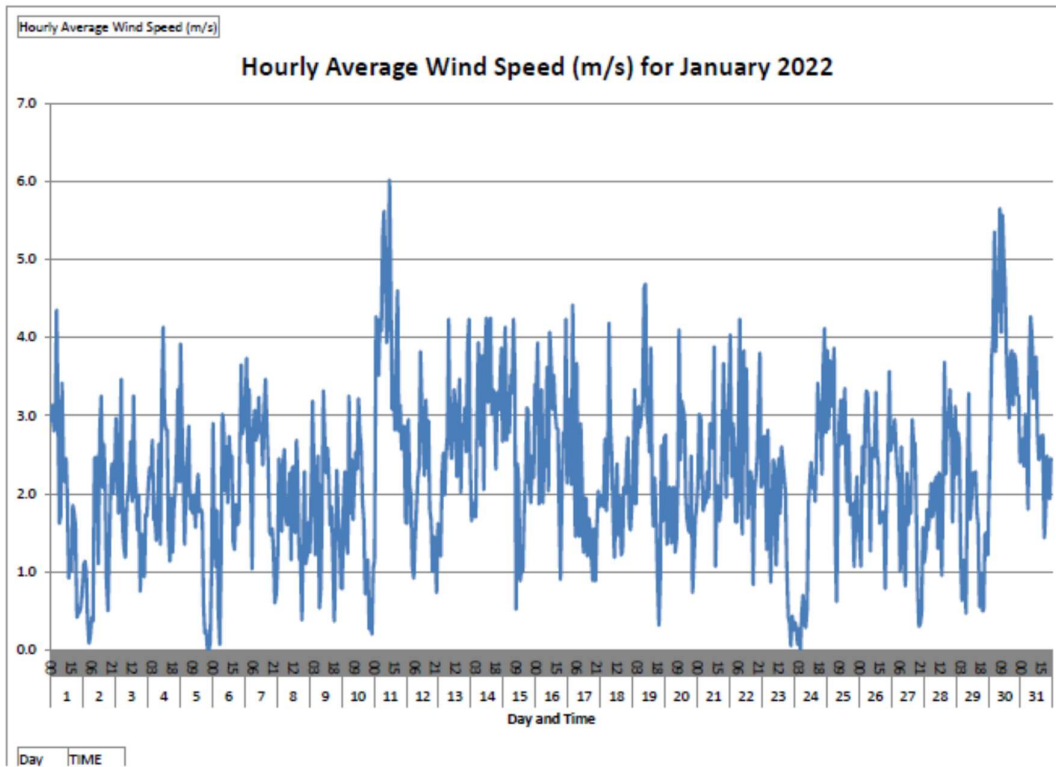
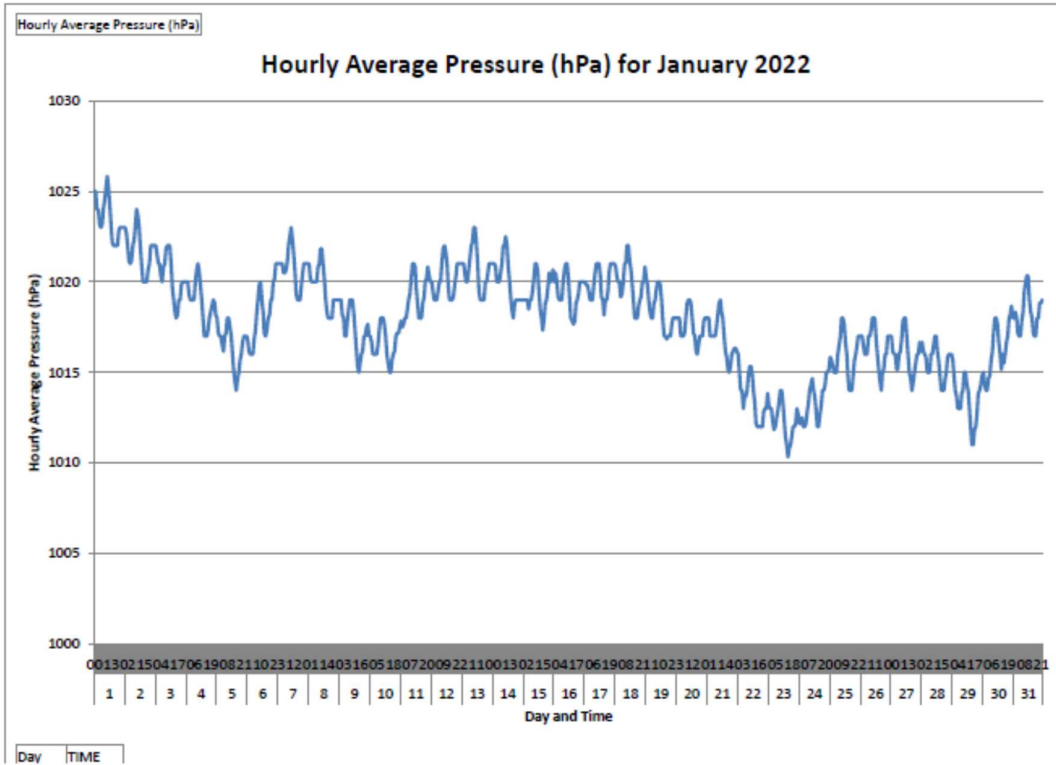
Annex D3

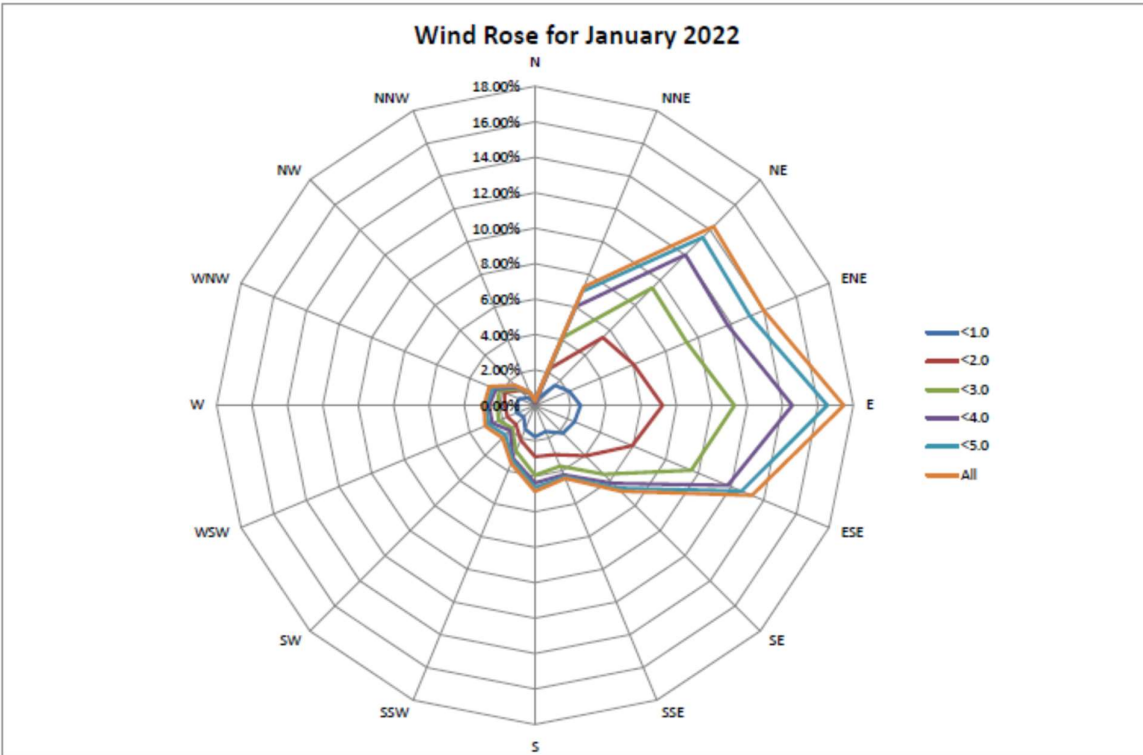
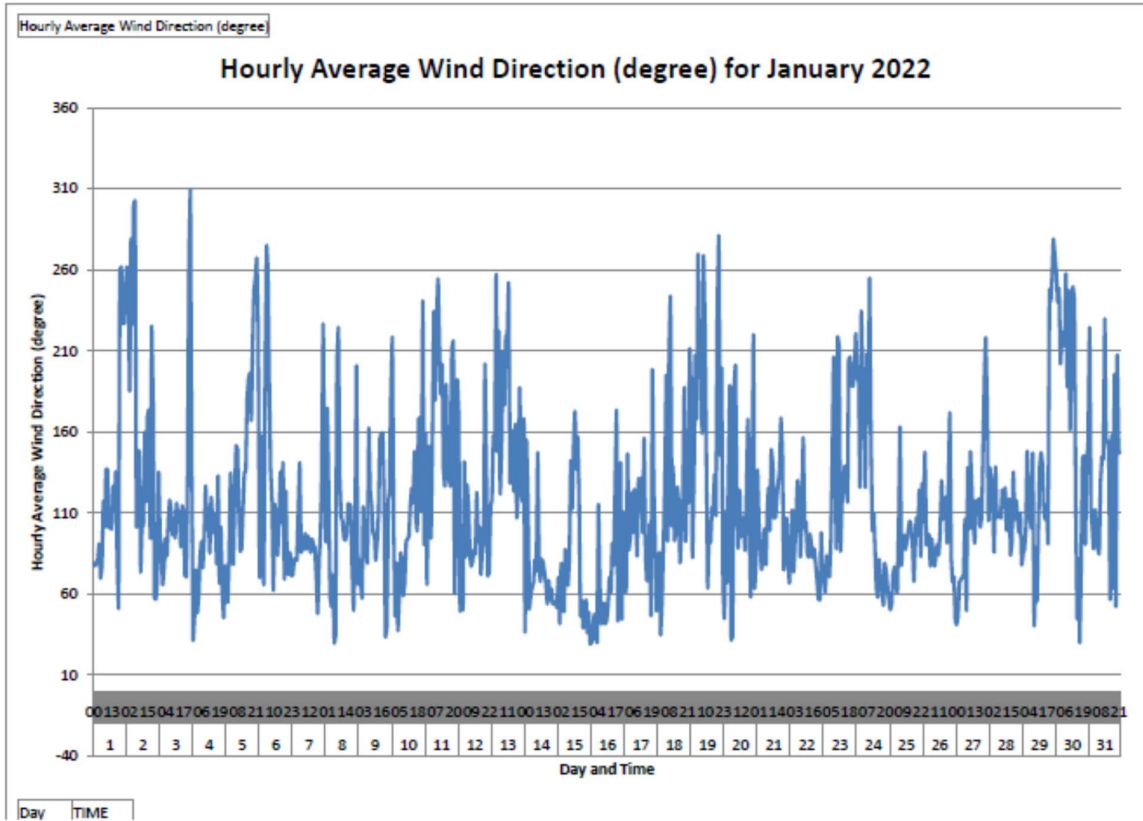
Meteorological Data

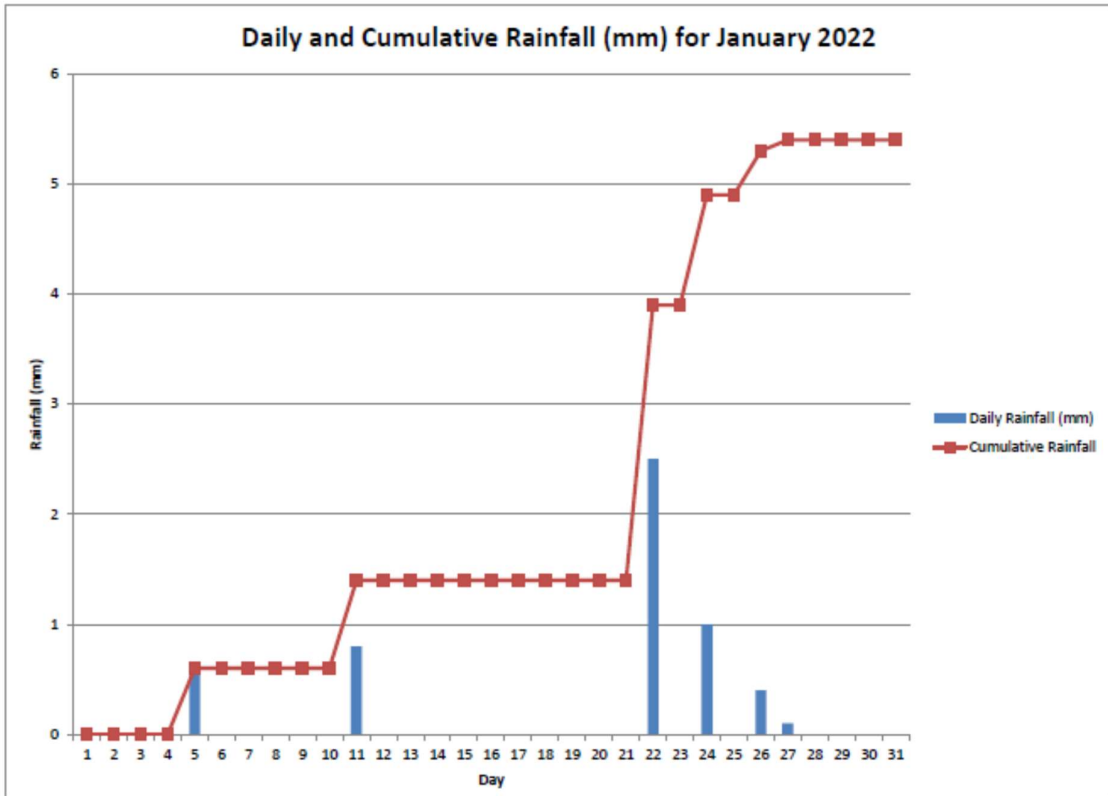
Annex D3 Meteorological Data

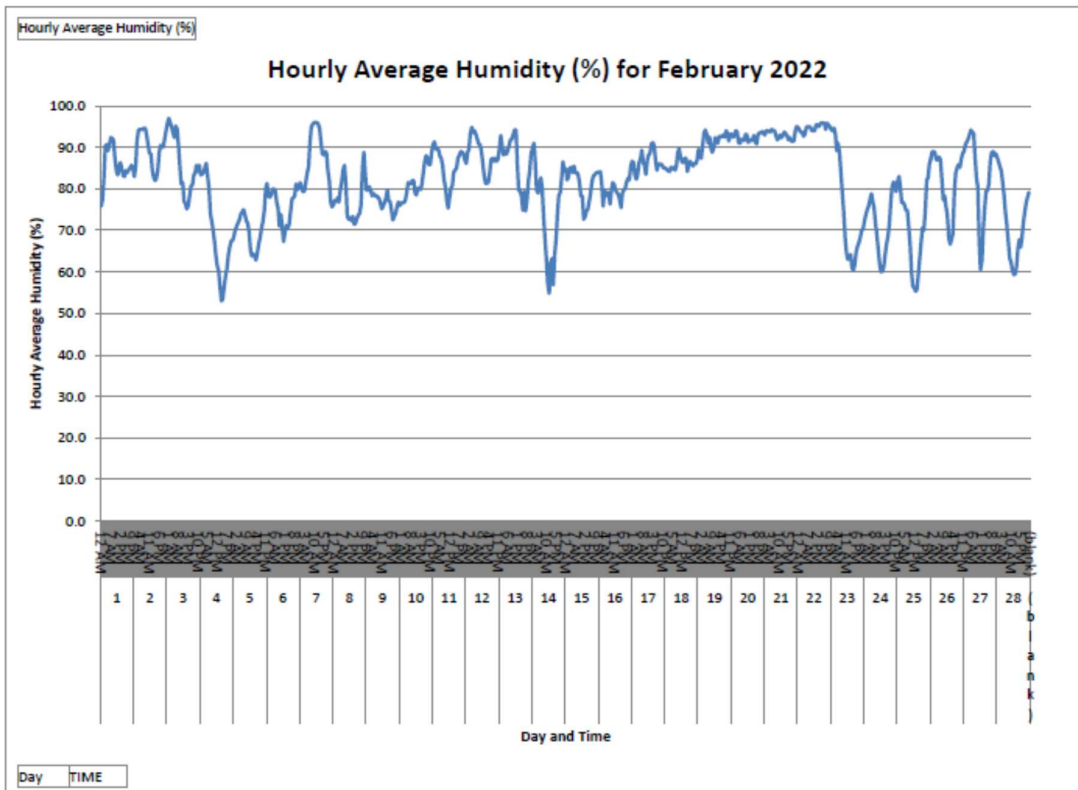
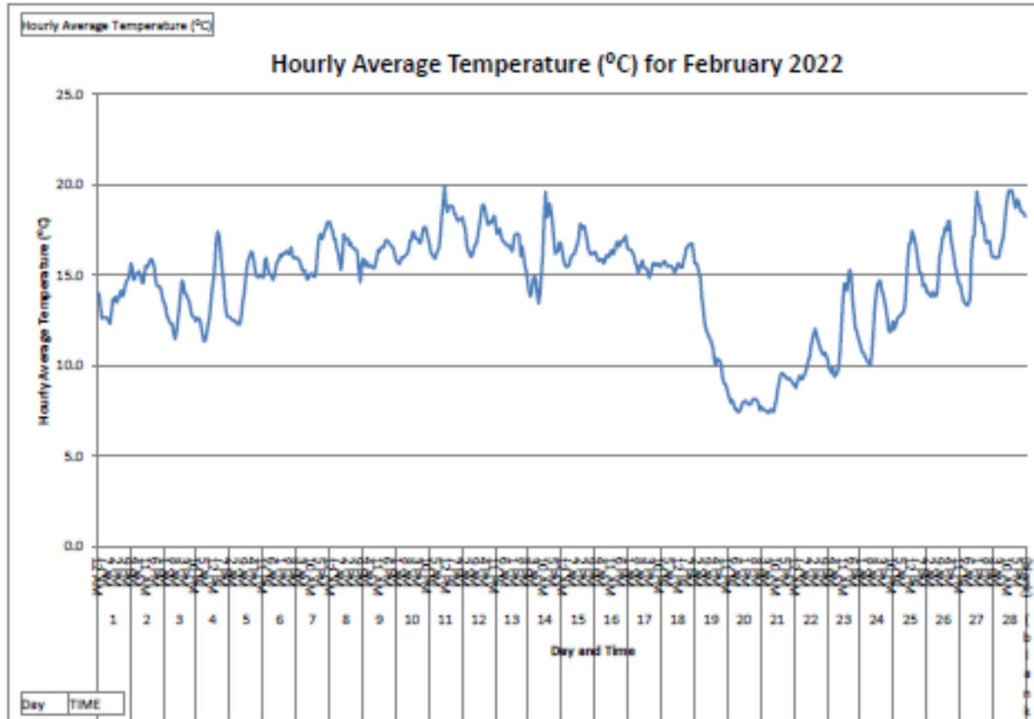
January 2022

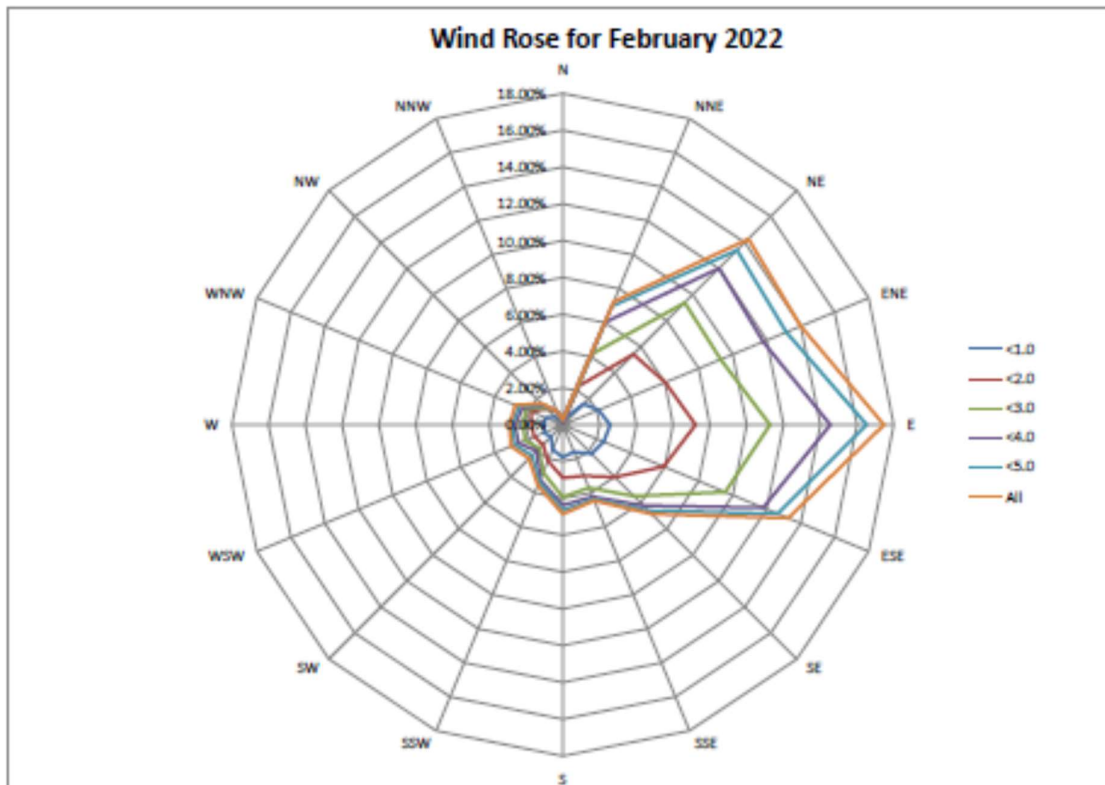
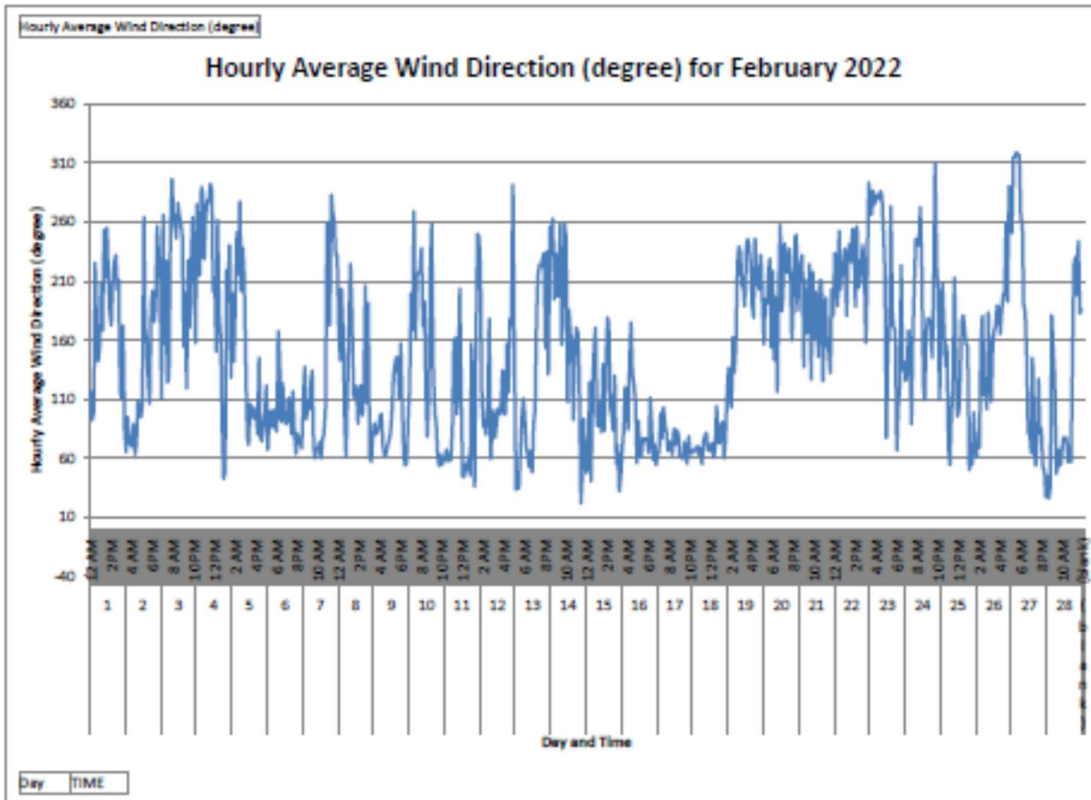


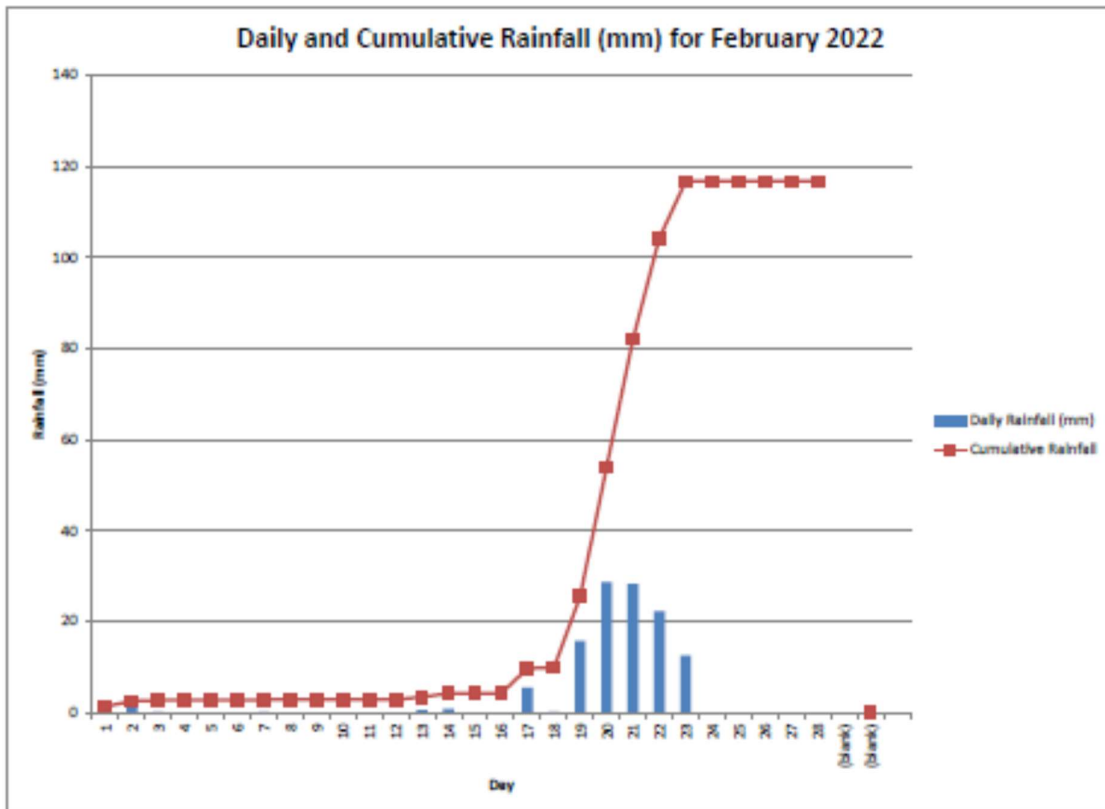




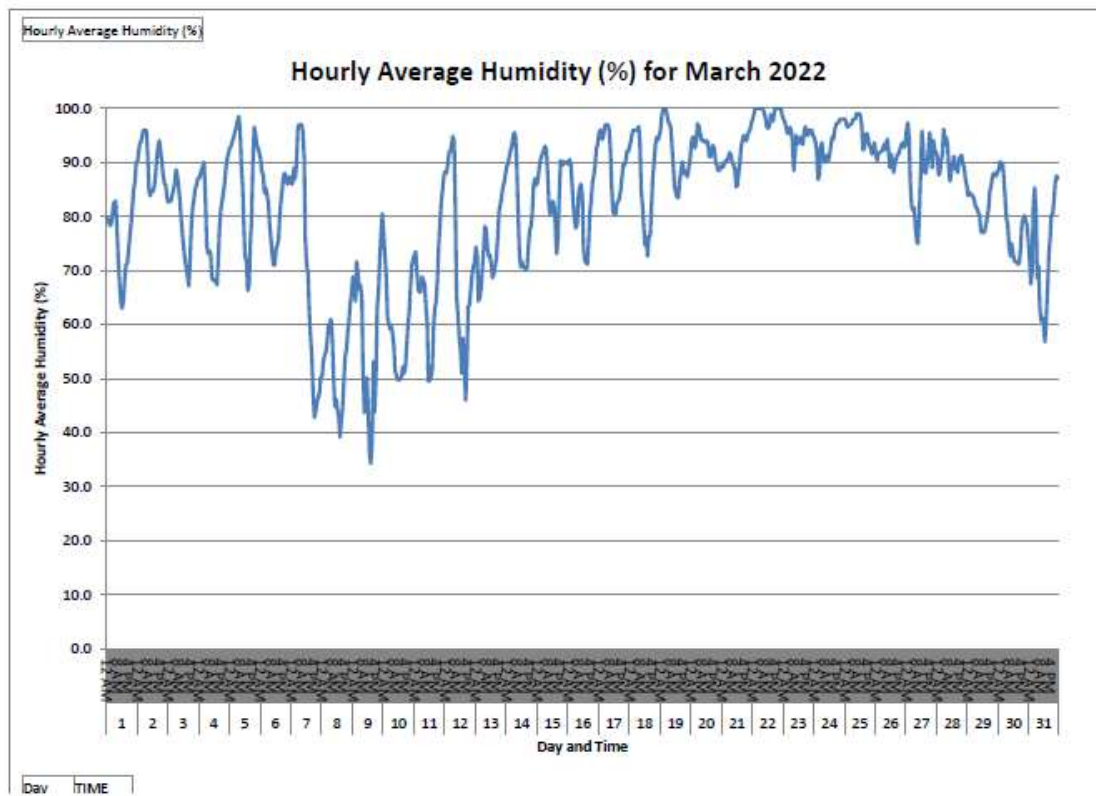
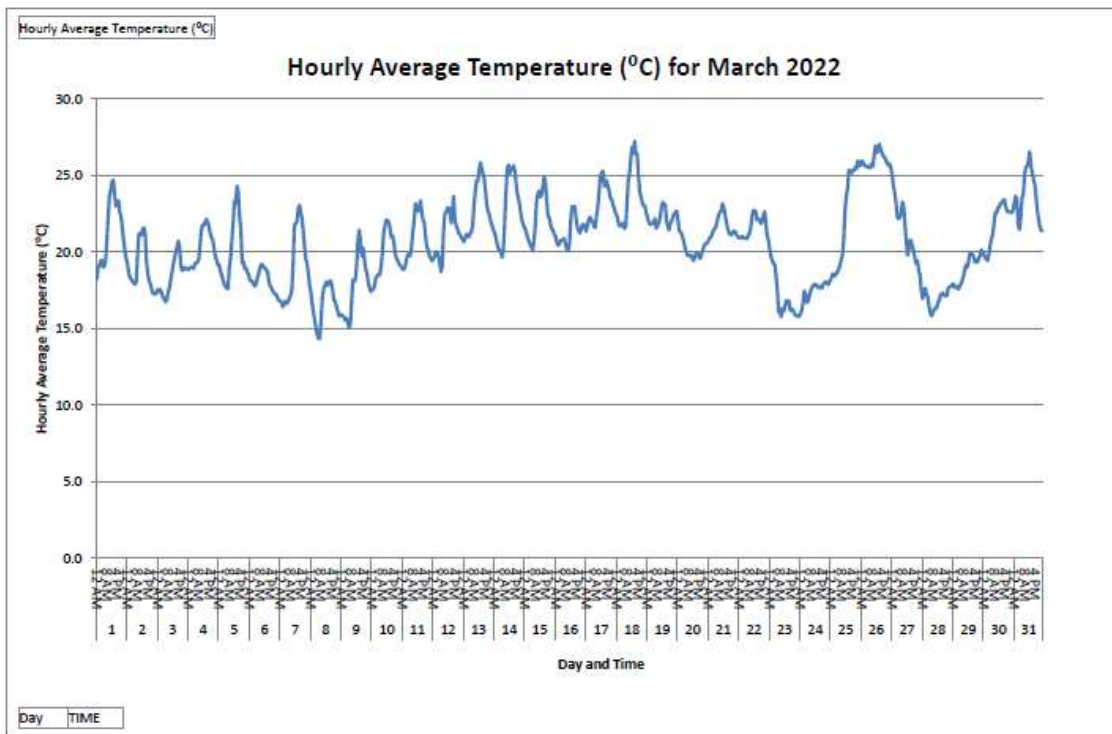


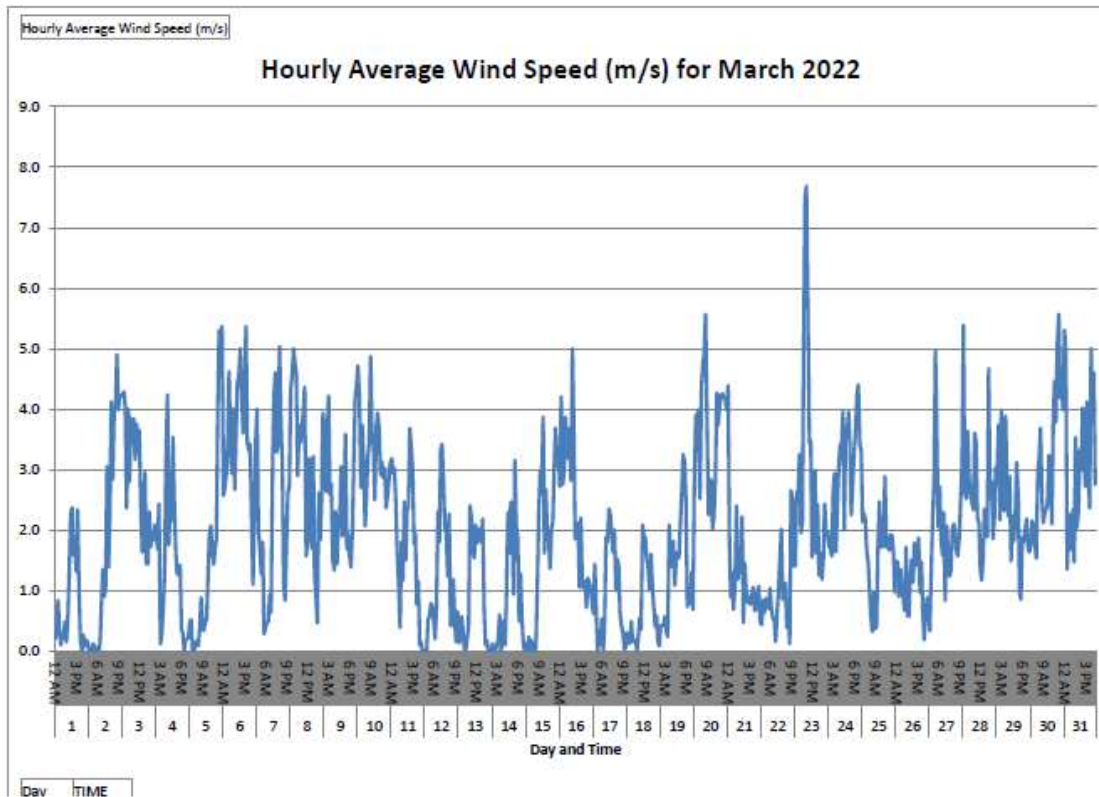
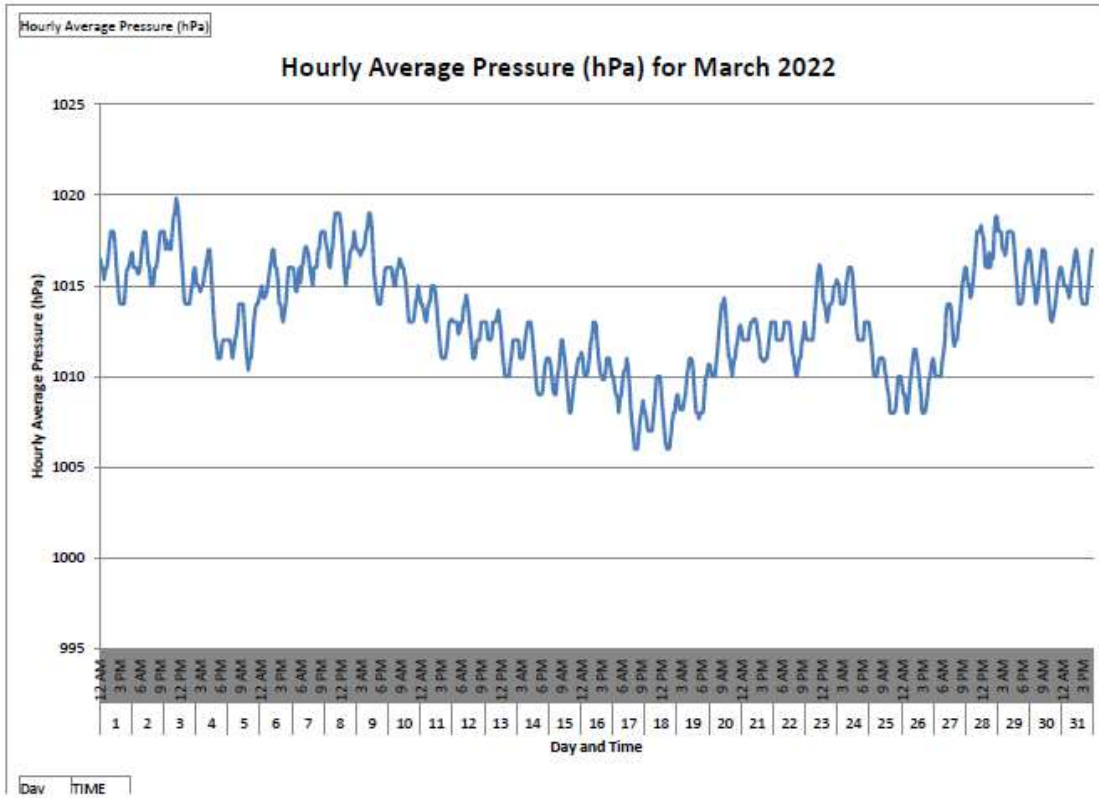


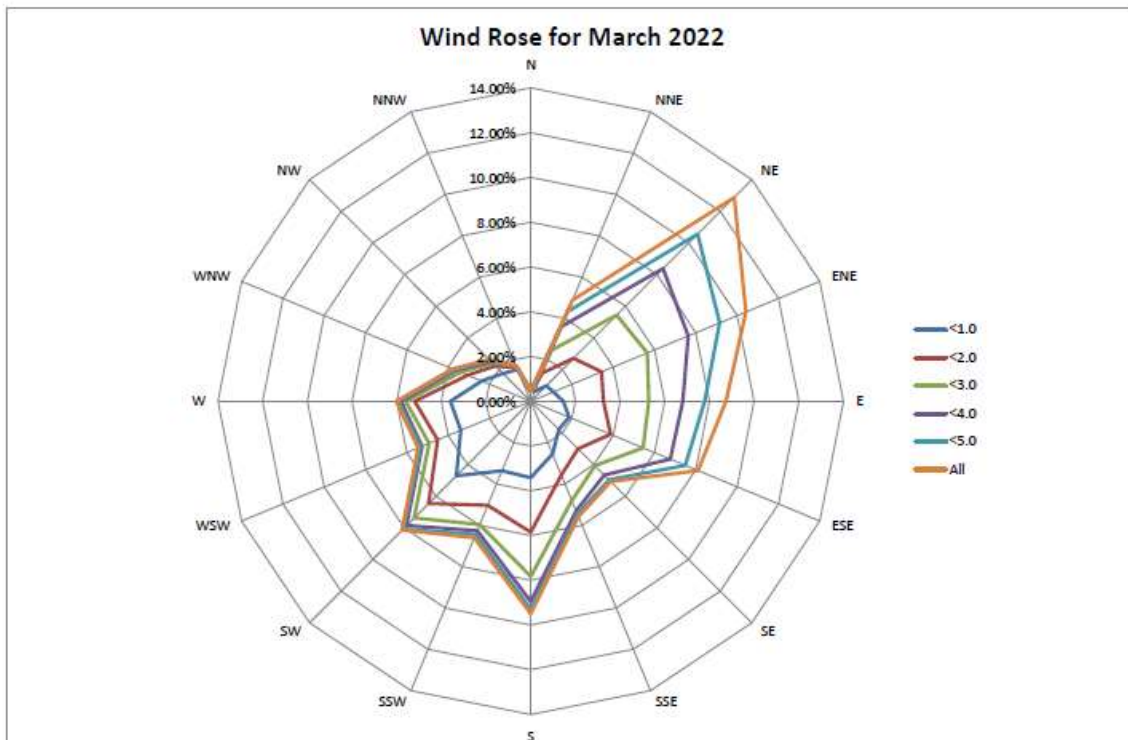
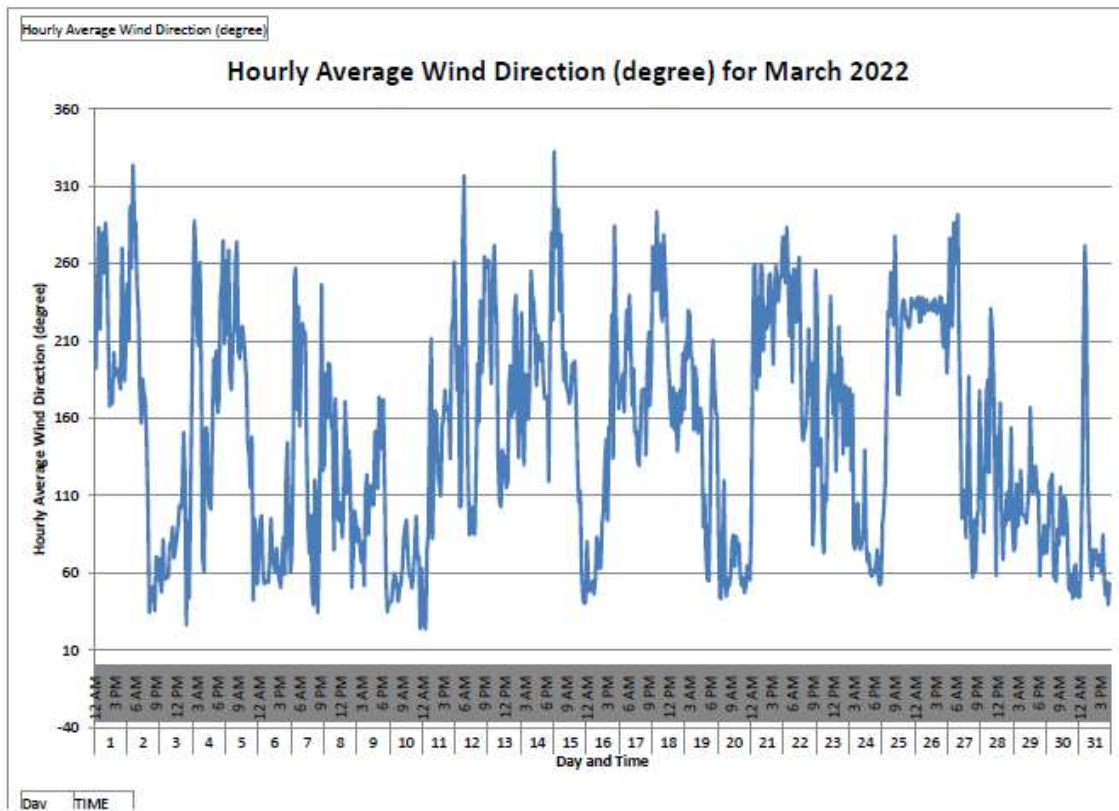


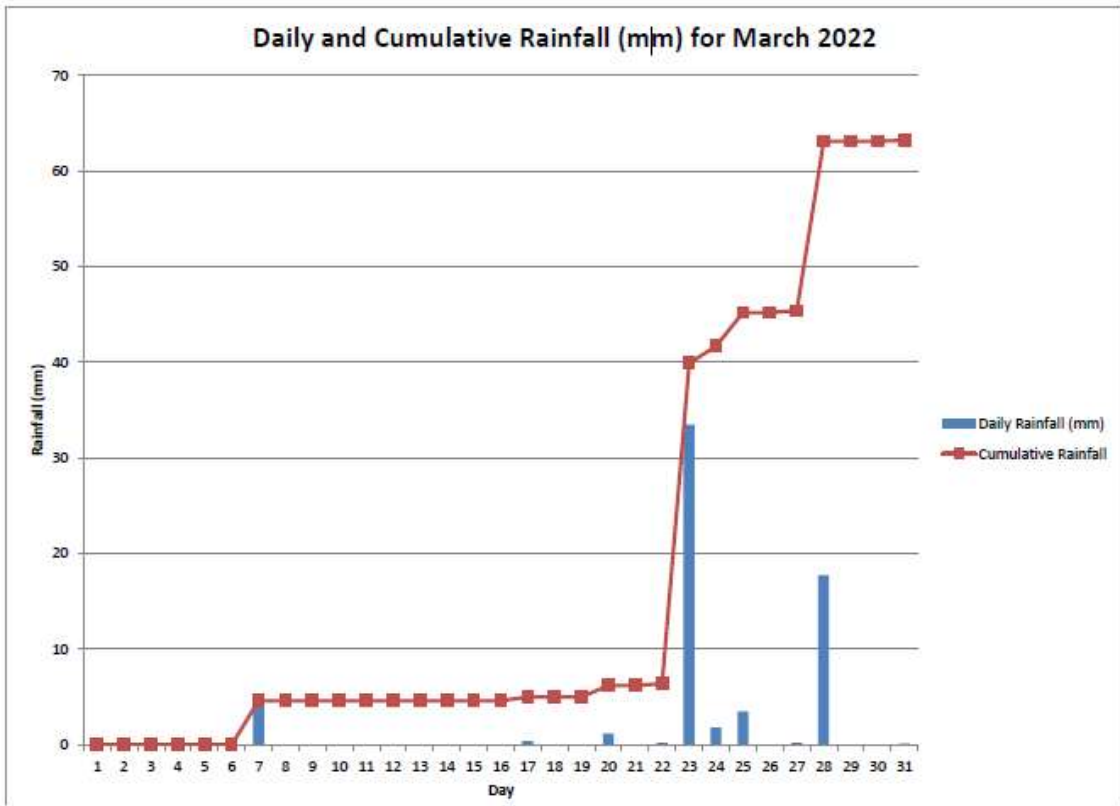


March 2022

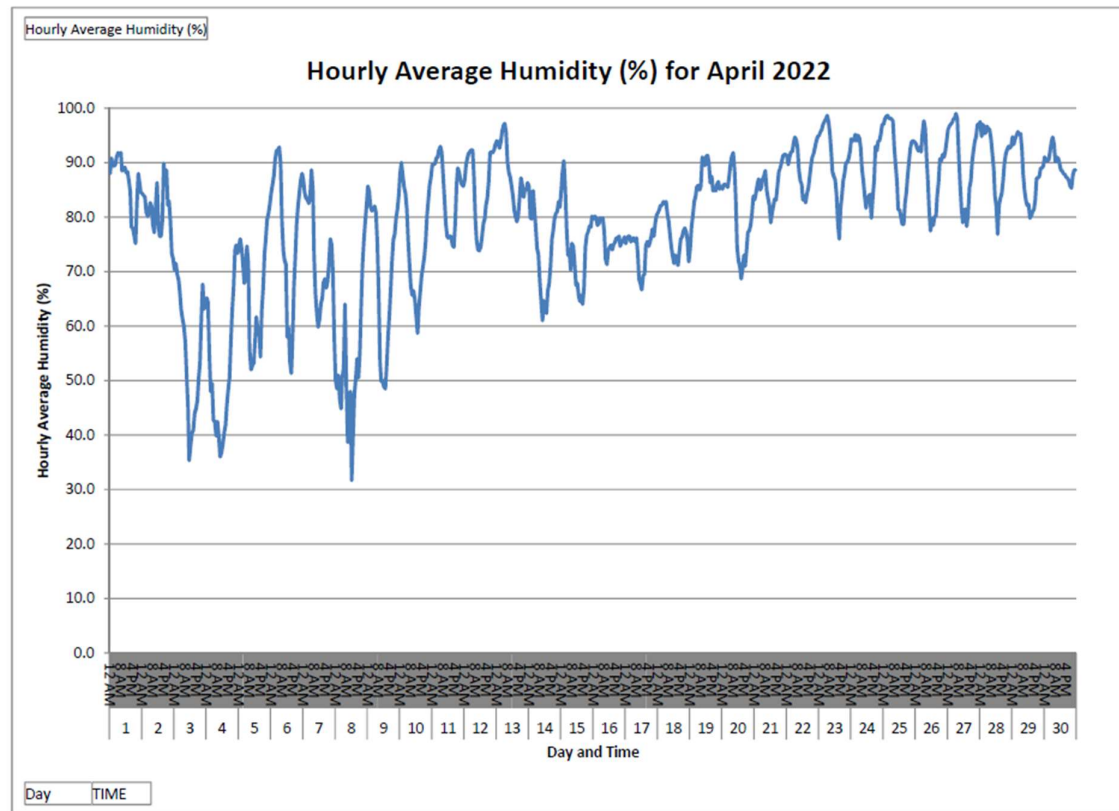
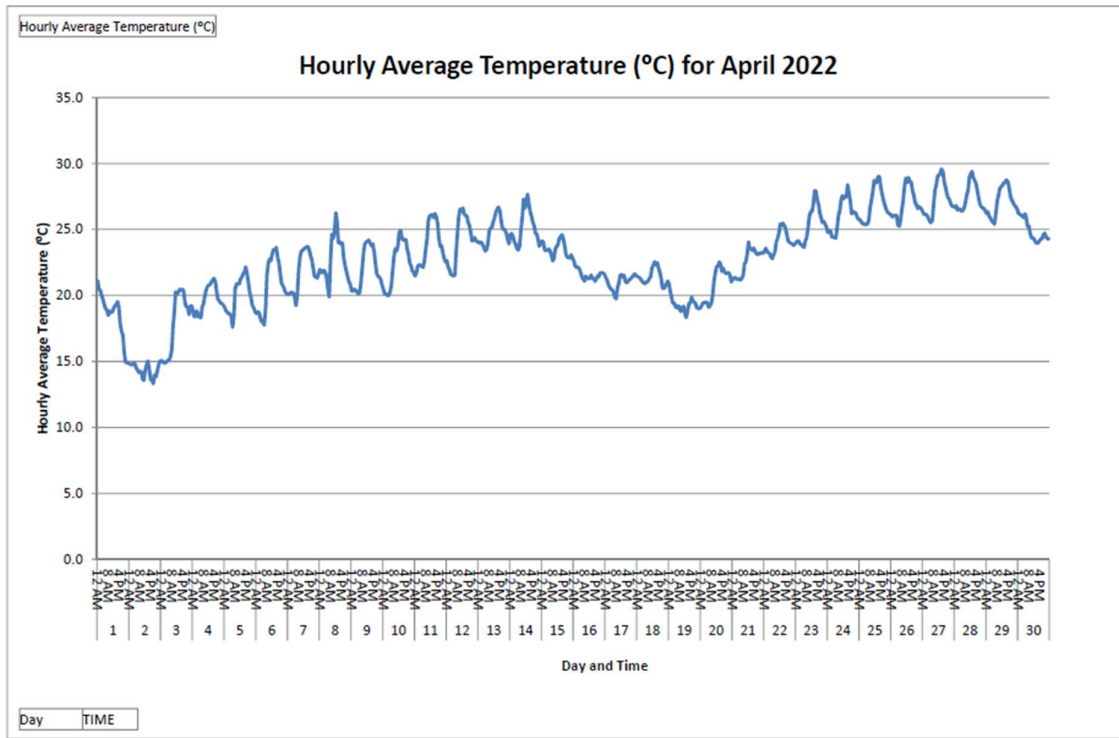


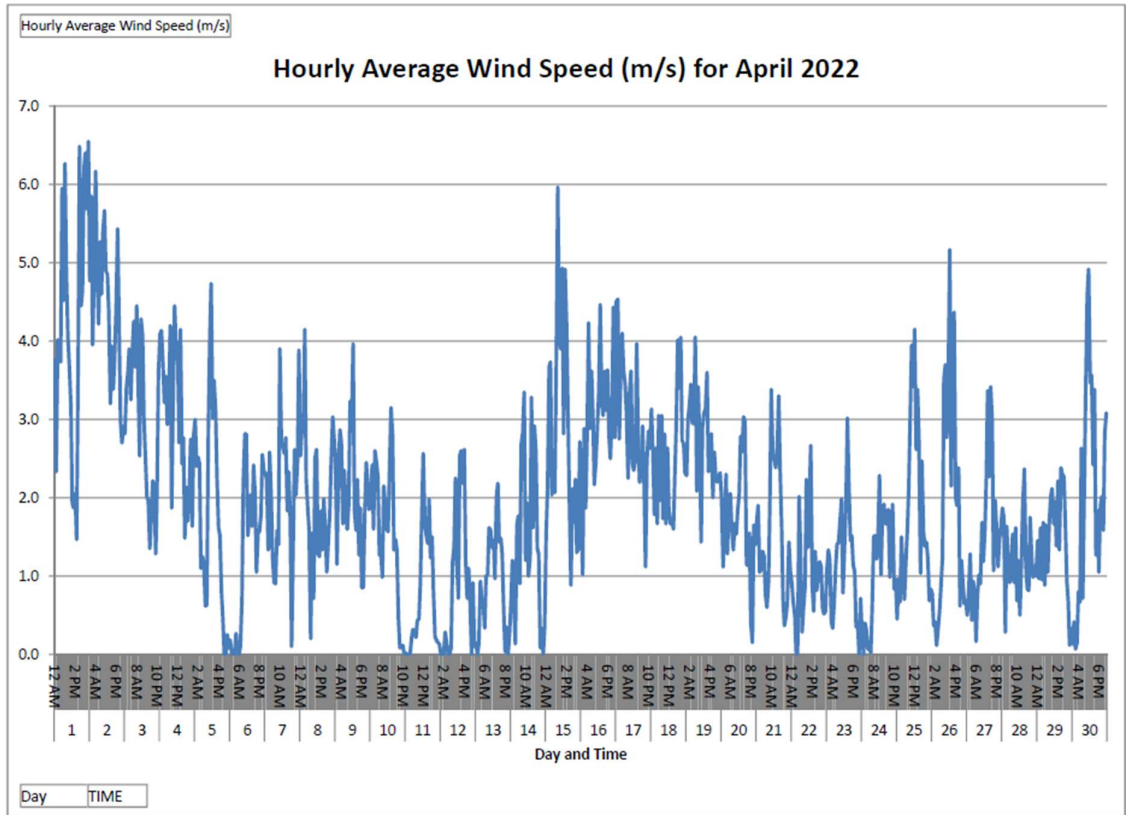
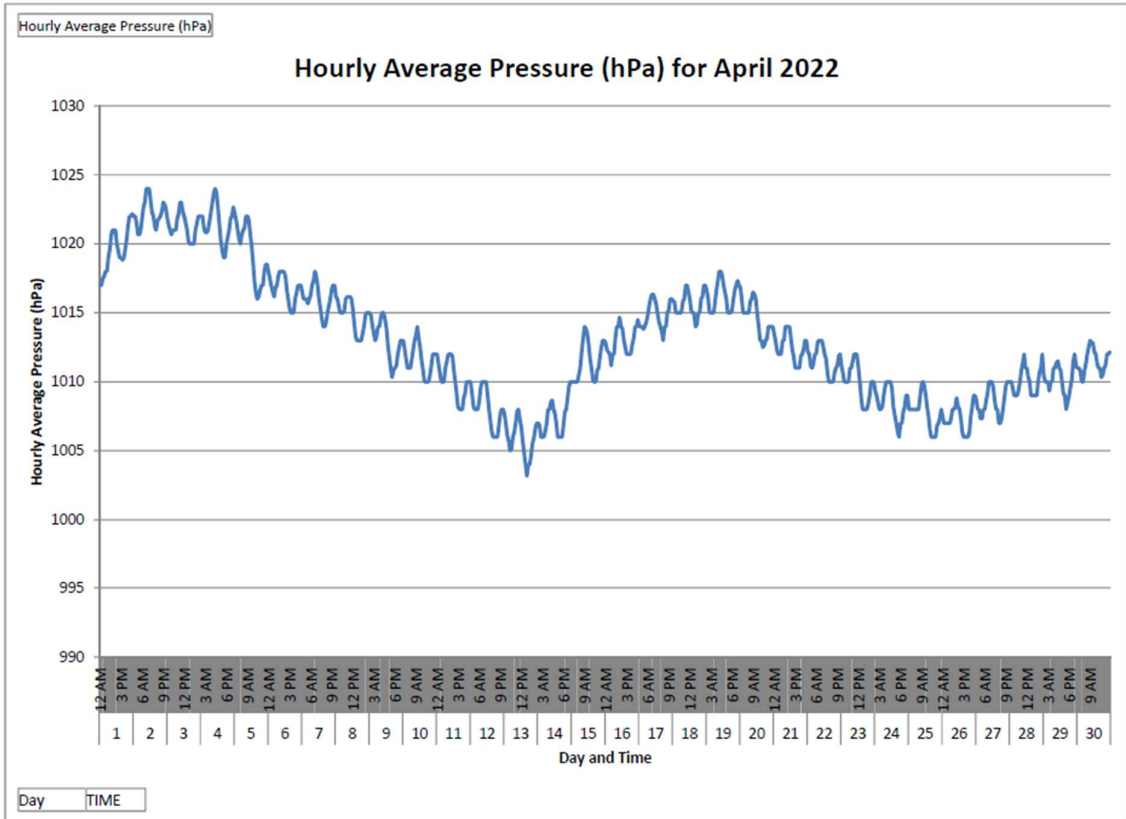


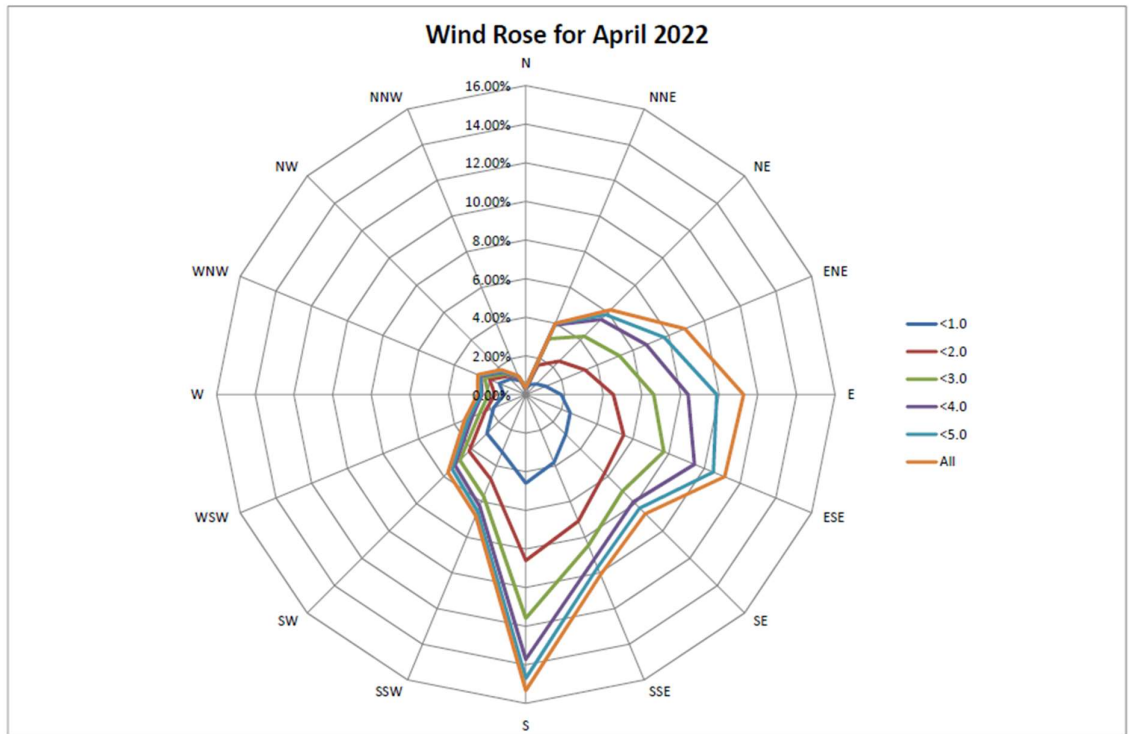
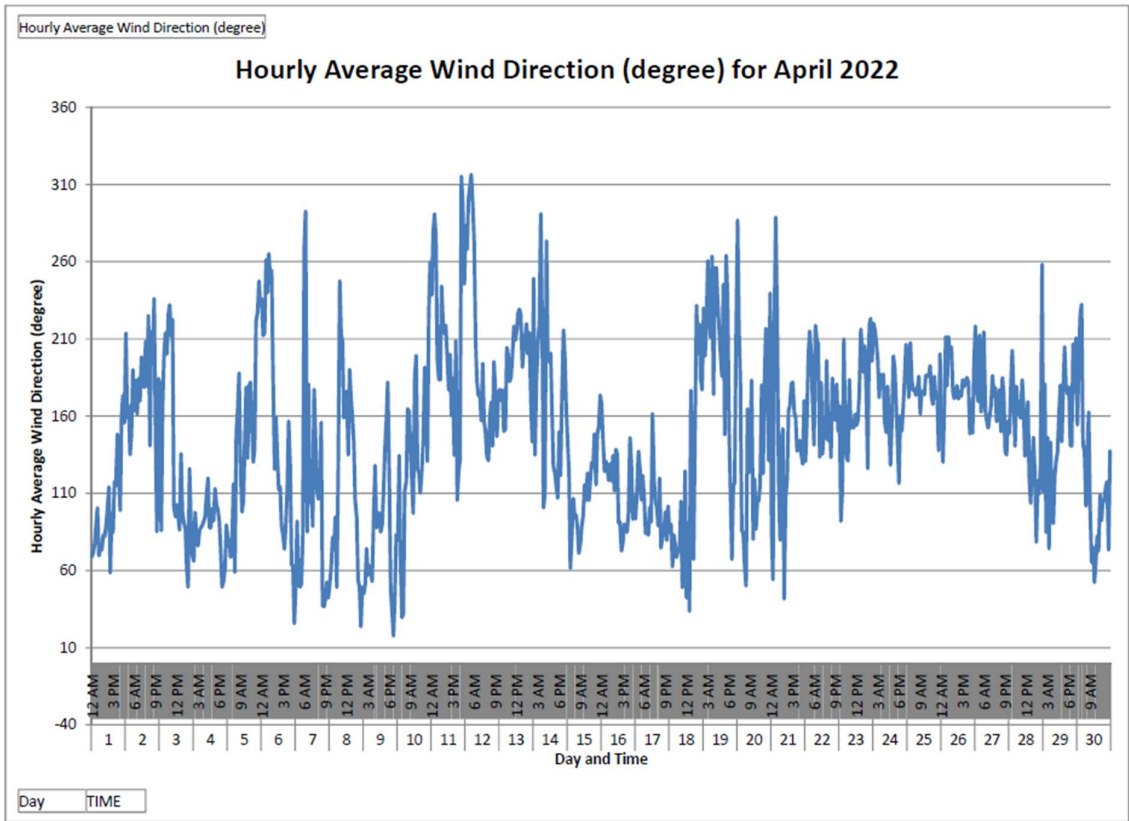


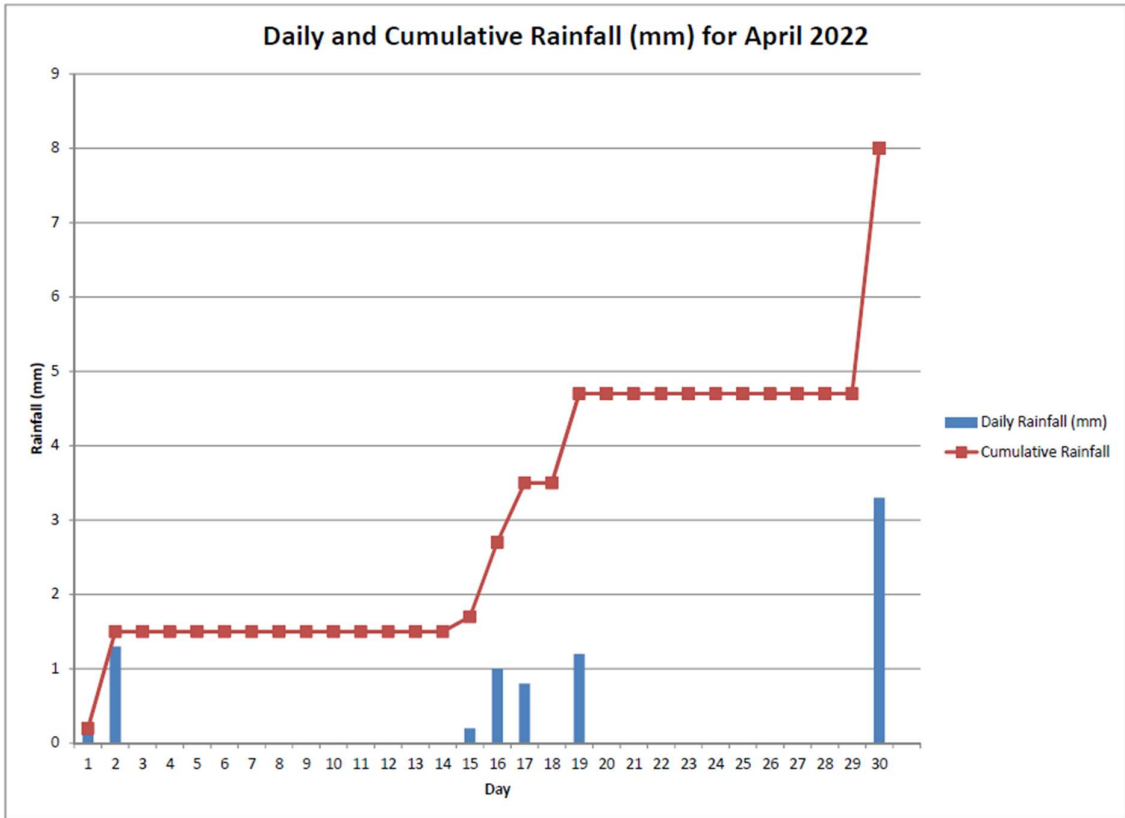


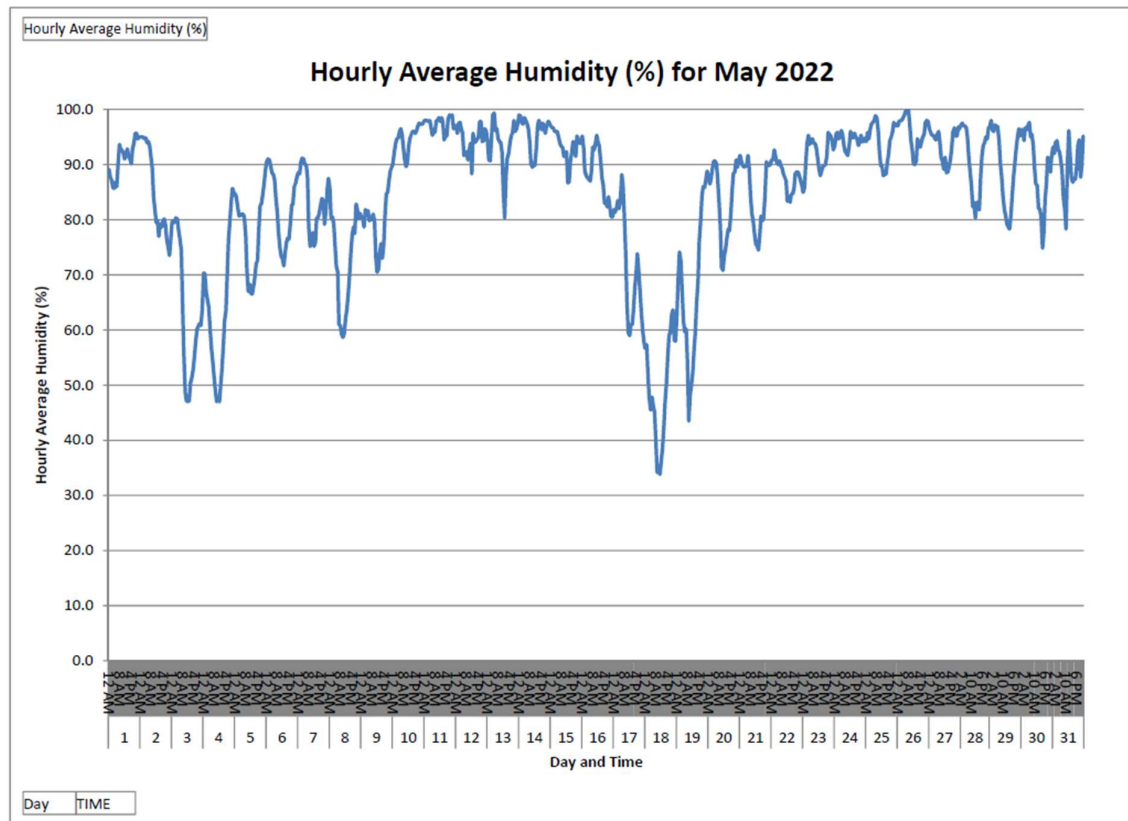
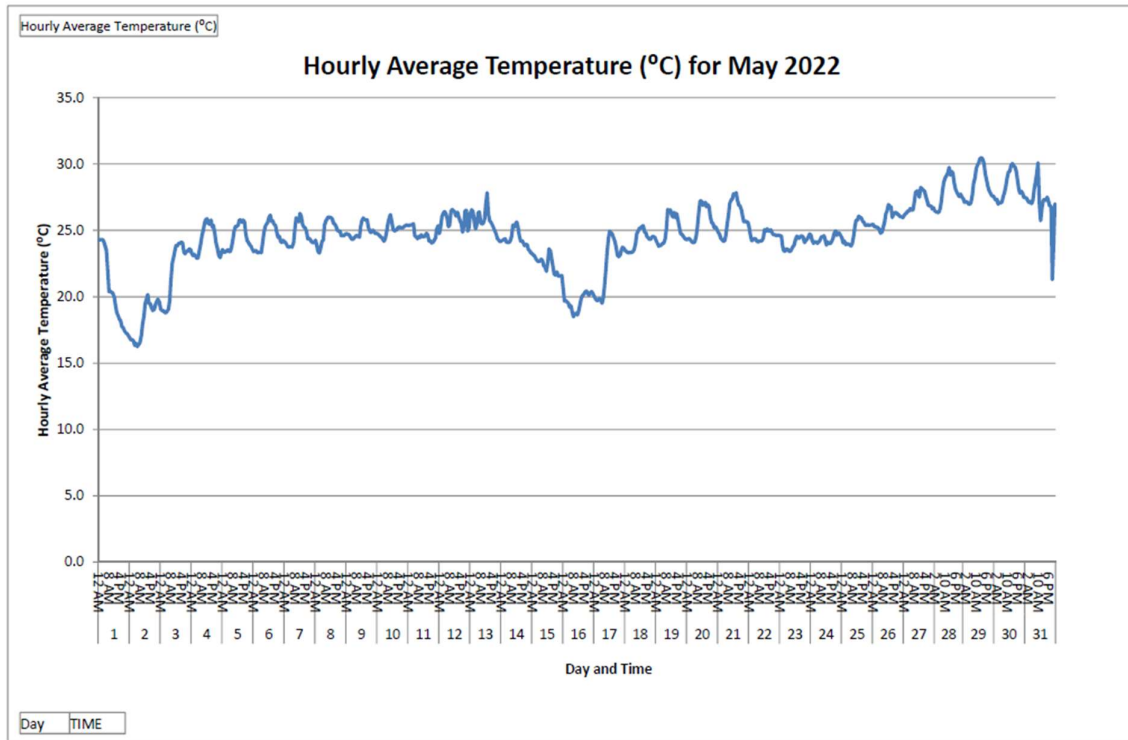
April 2022

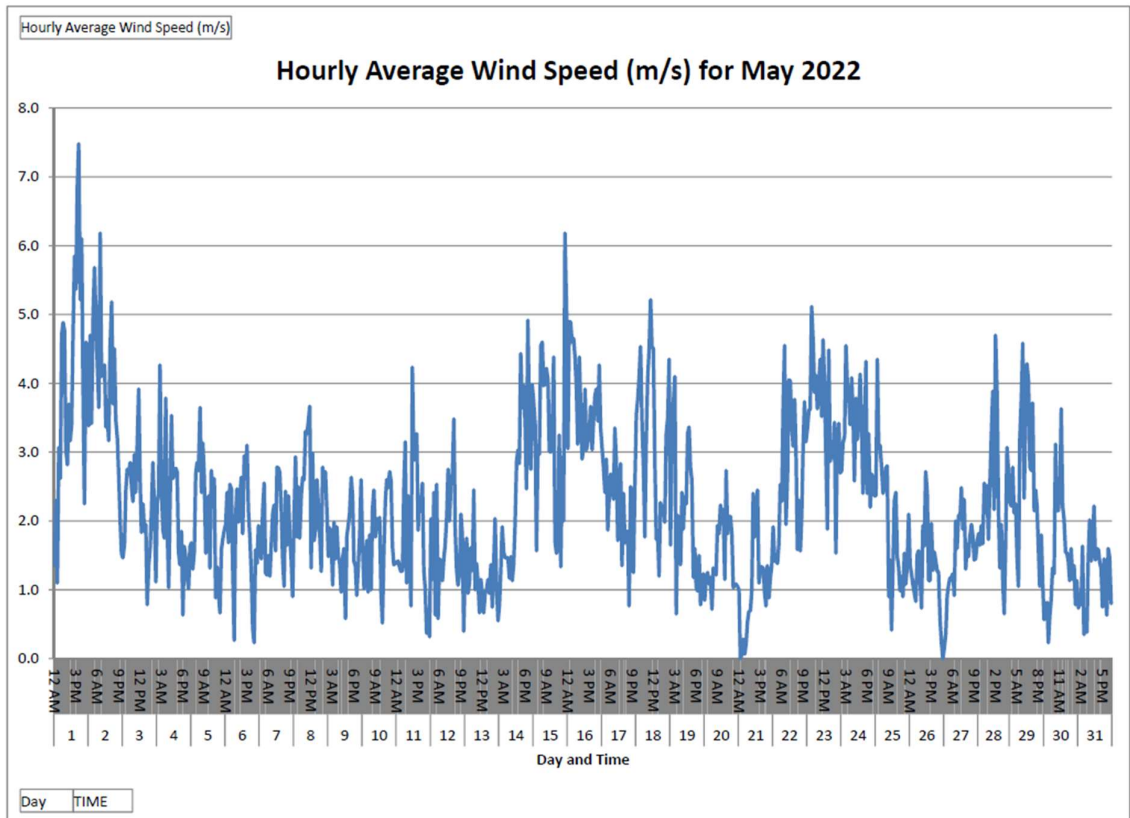
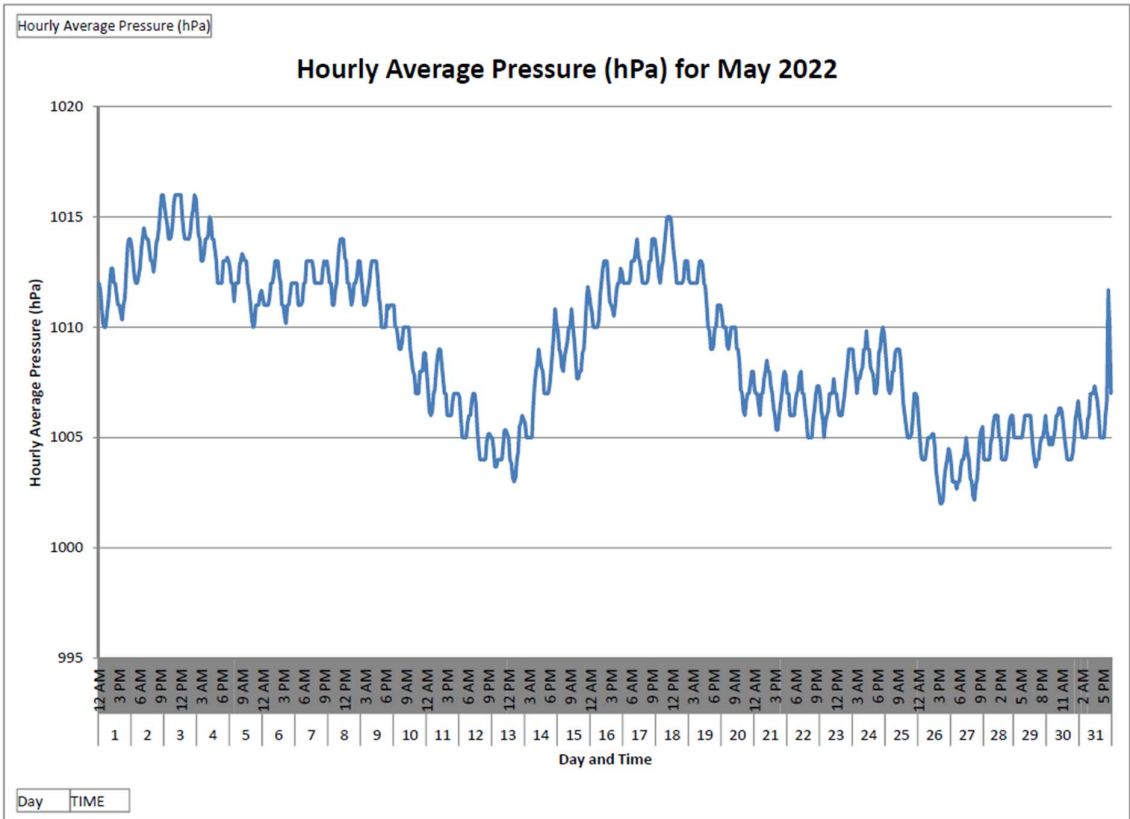


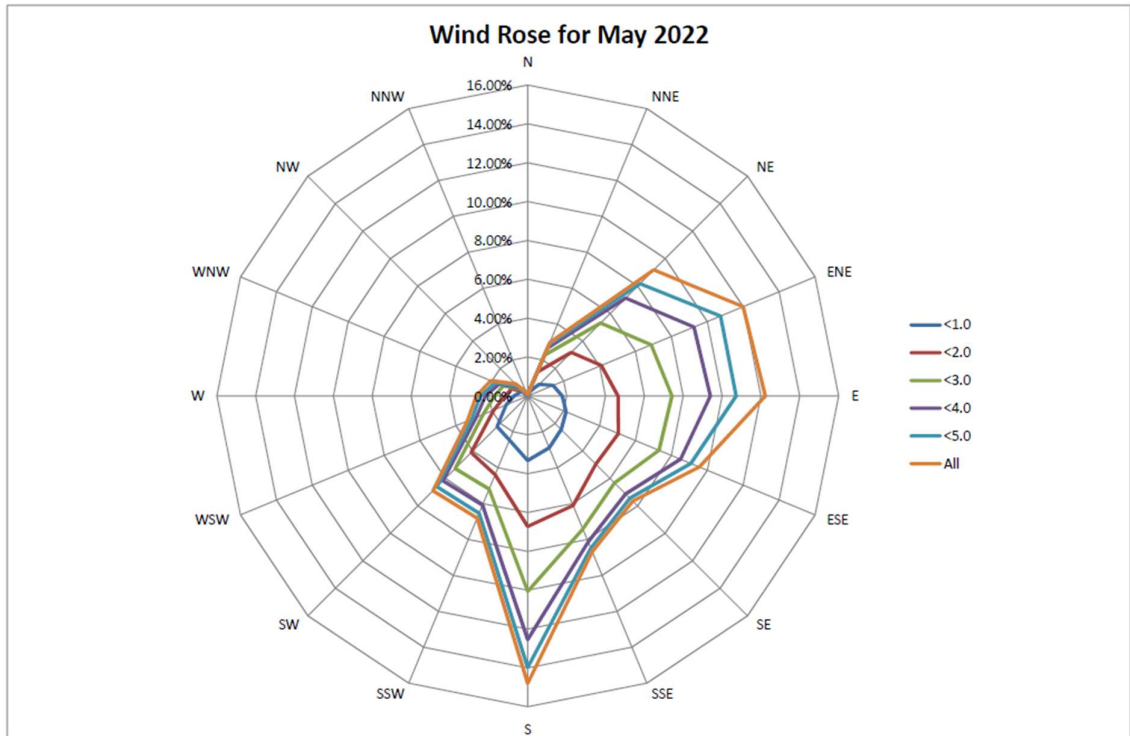
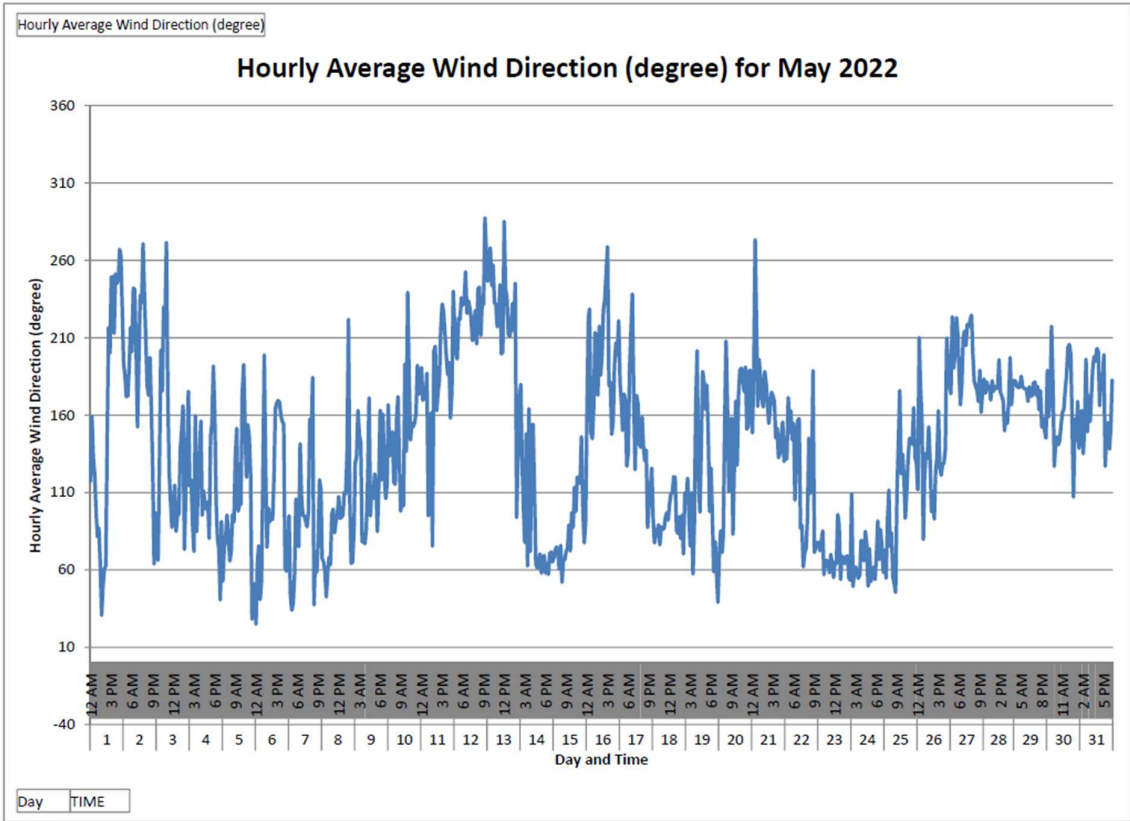


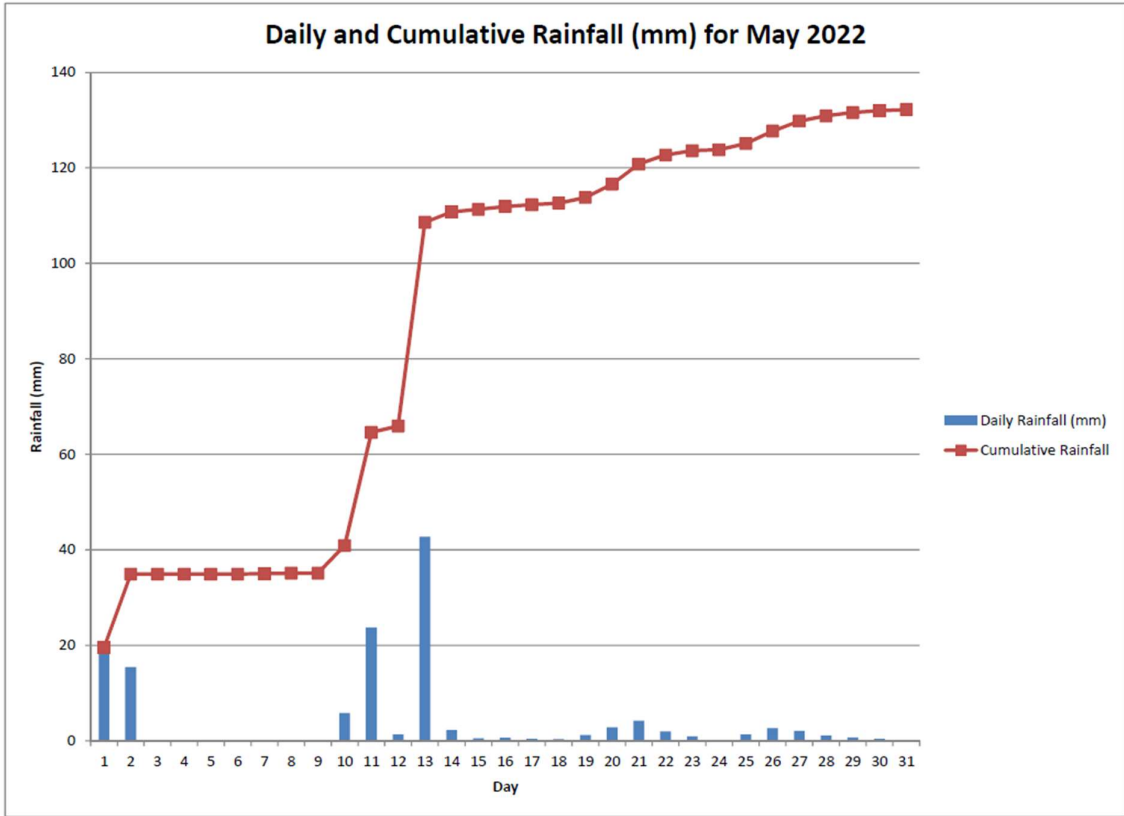


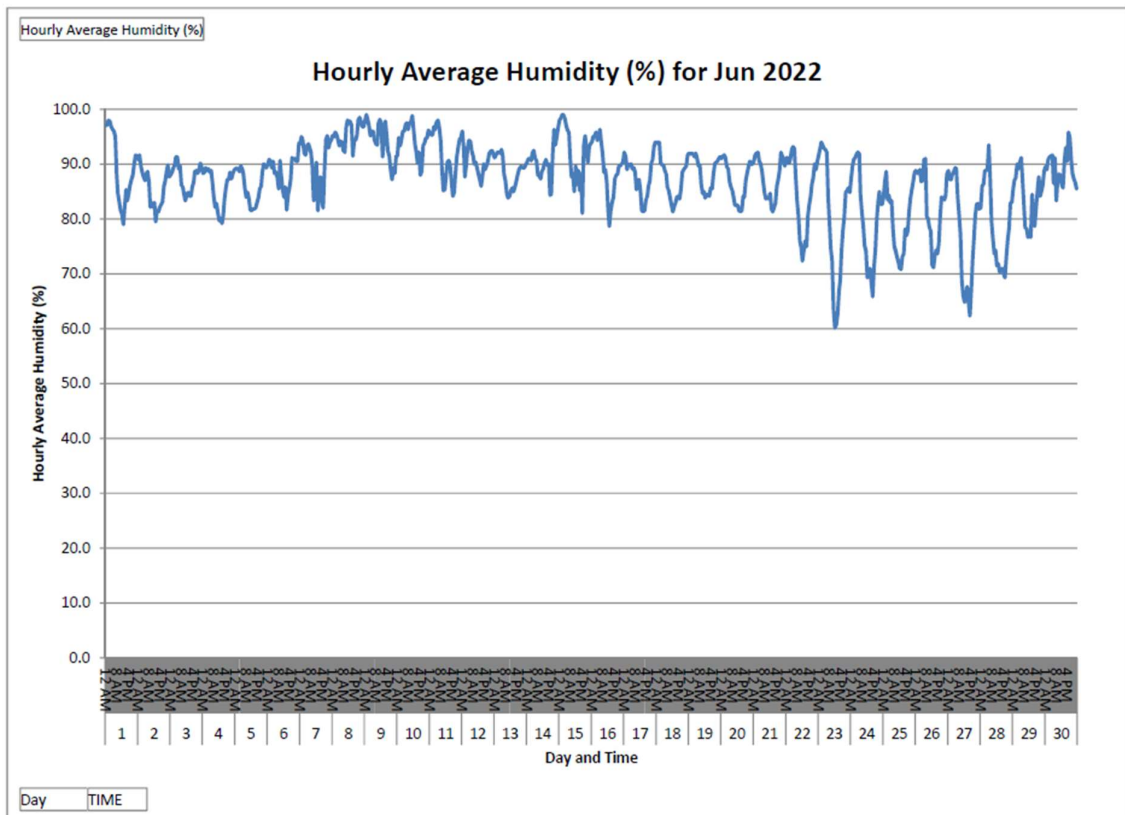
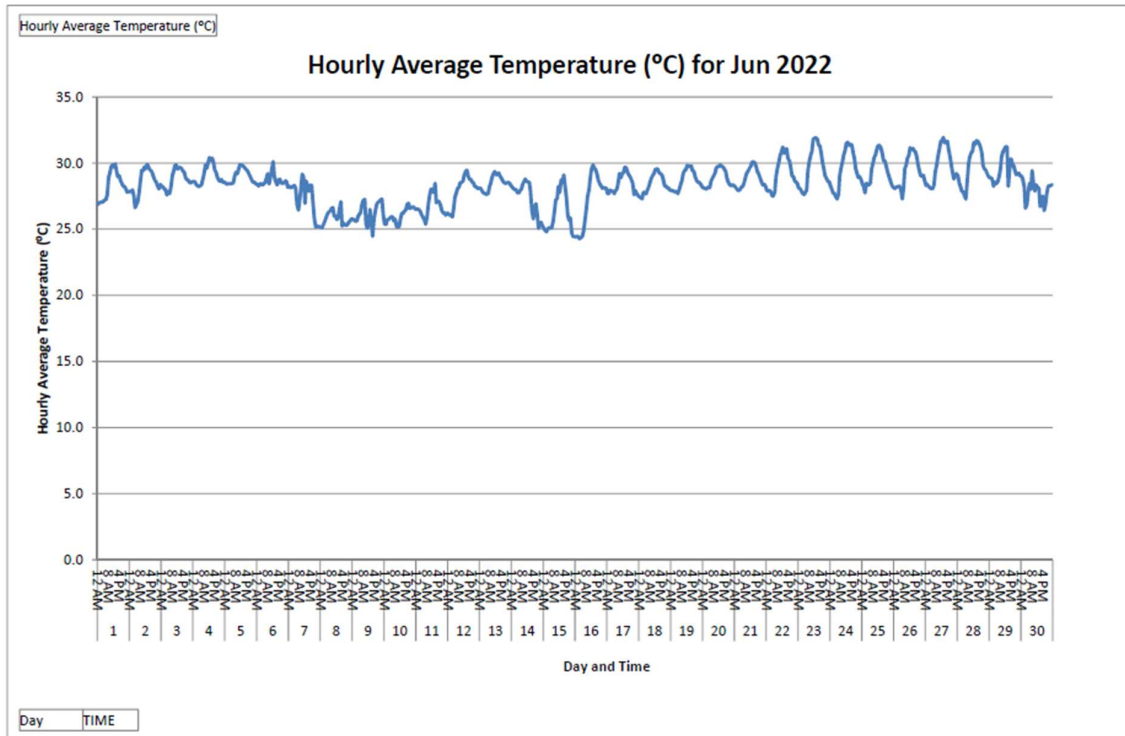


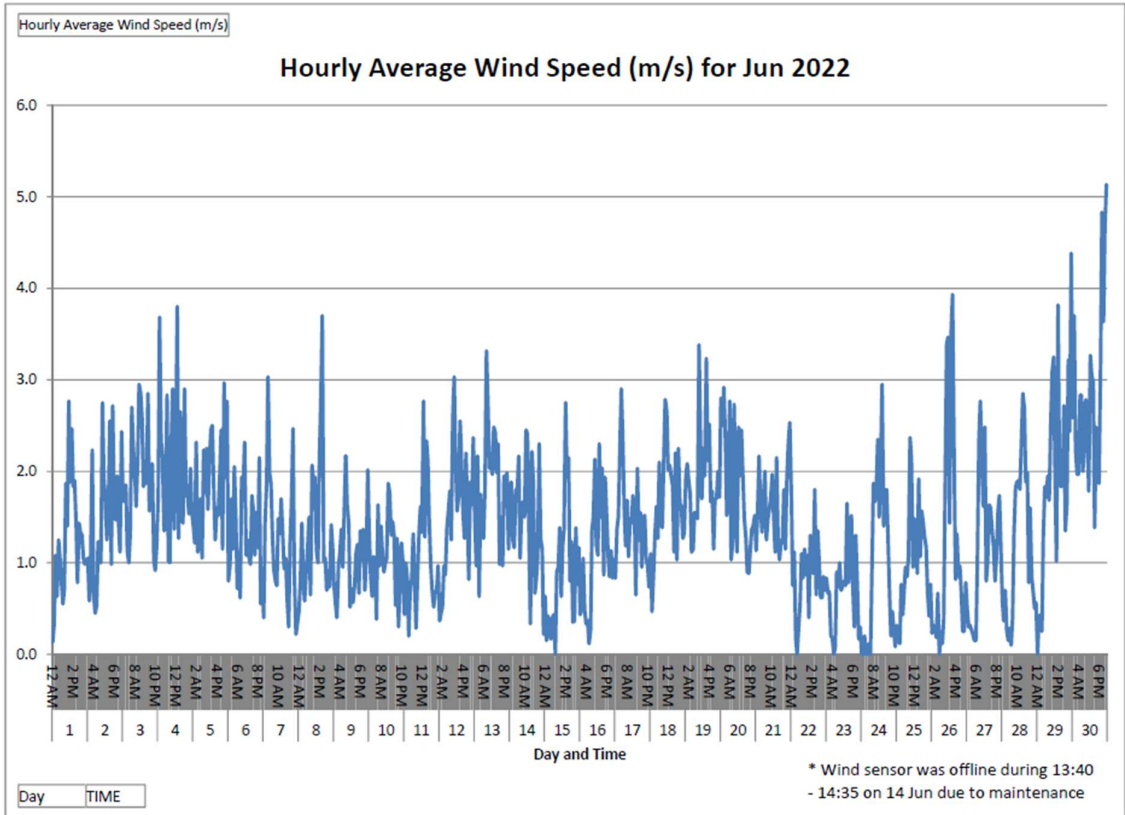
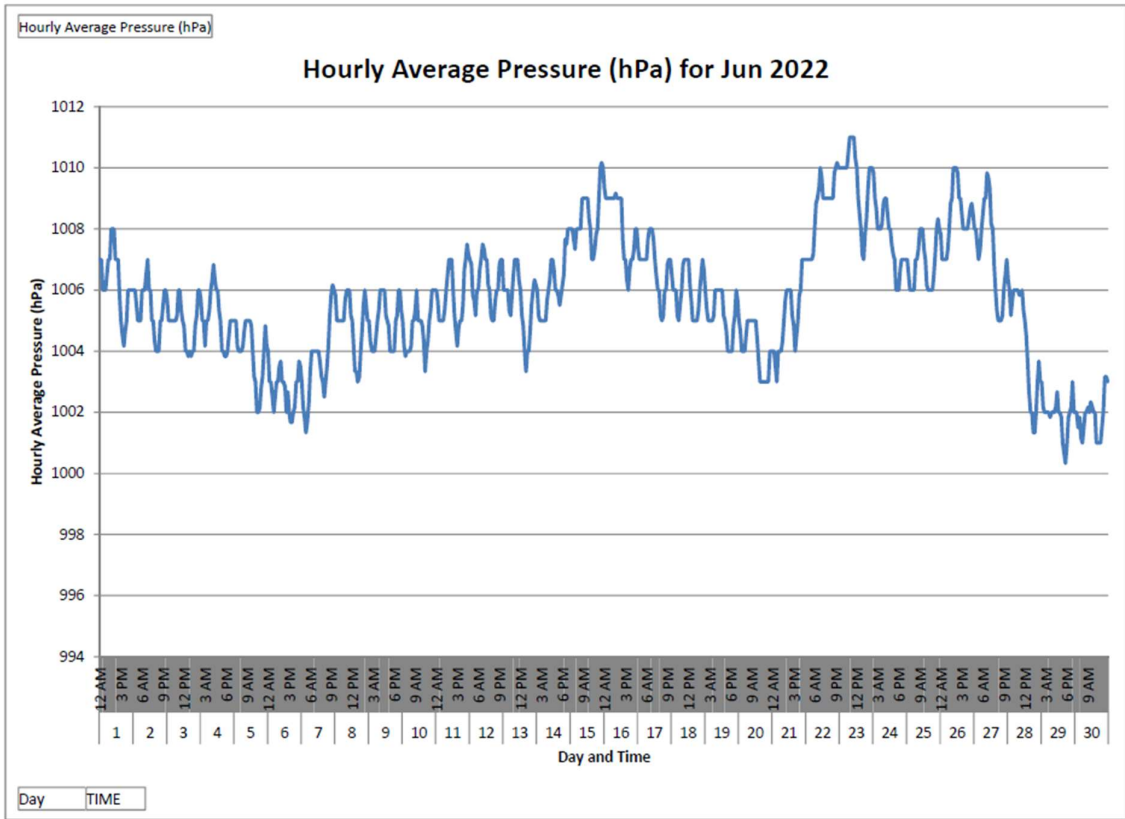


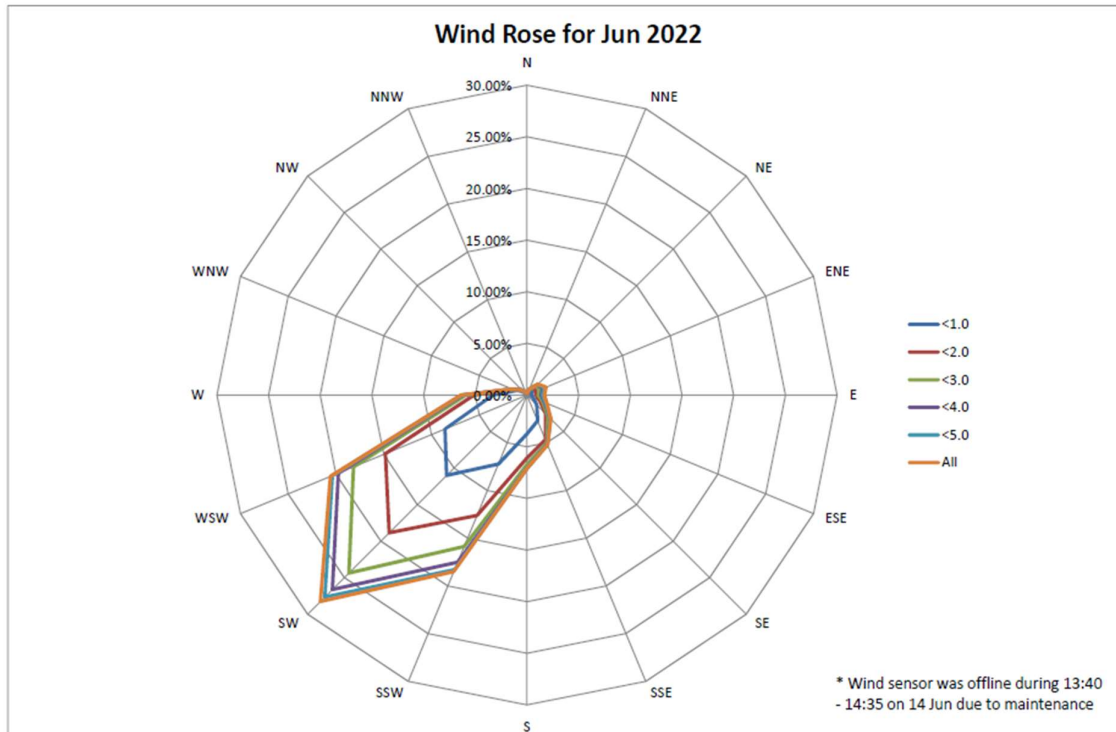
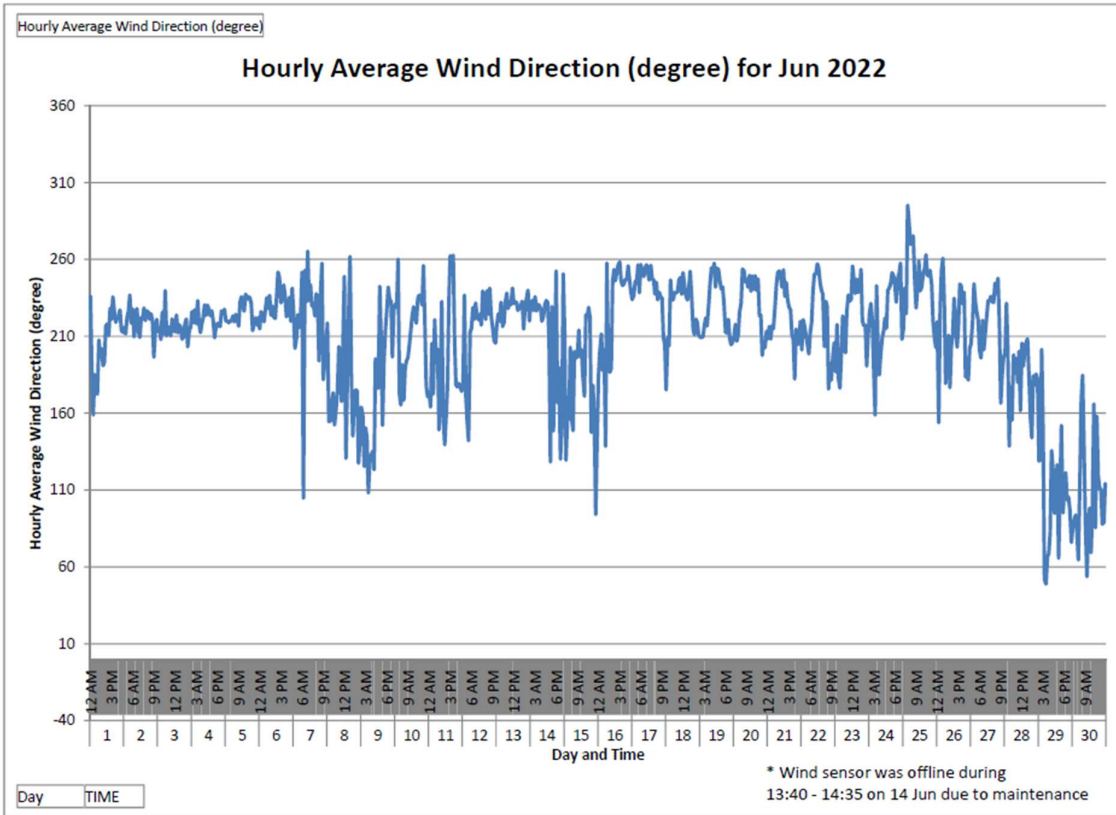


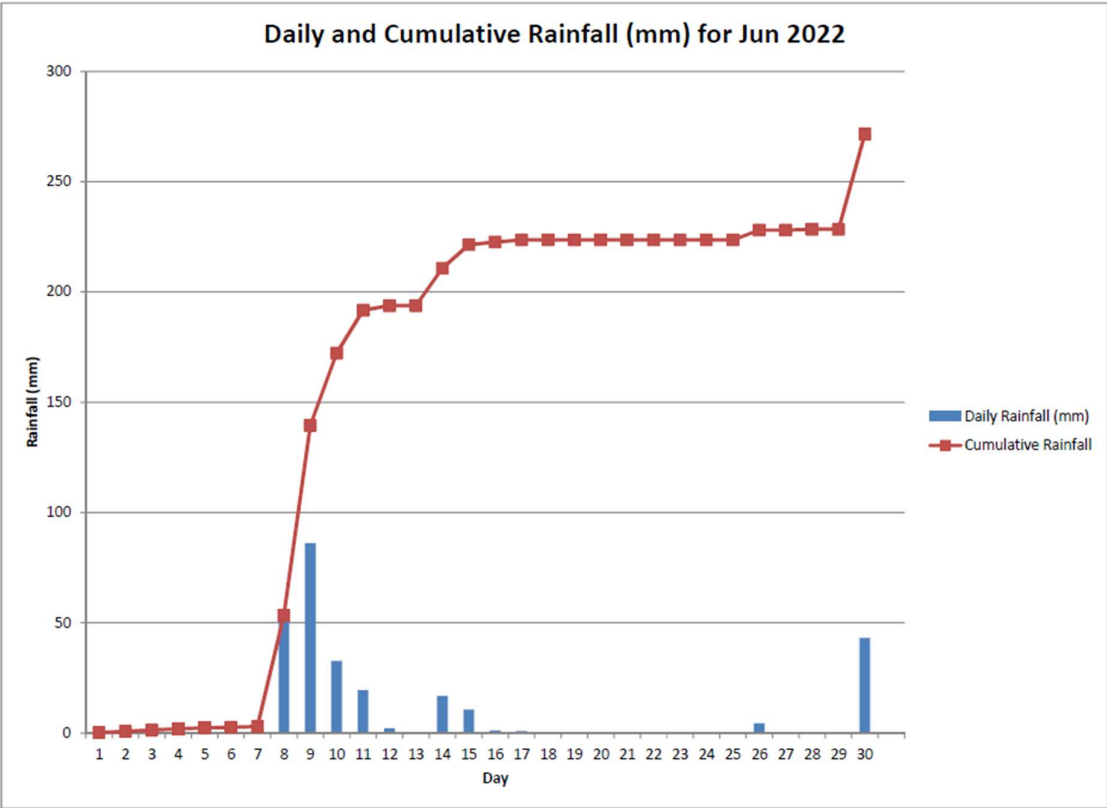


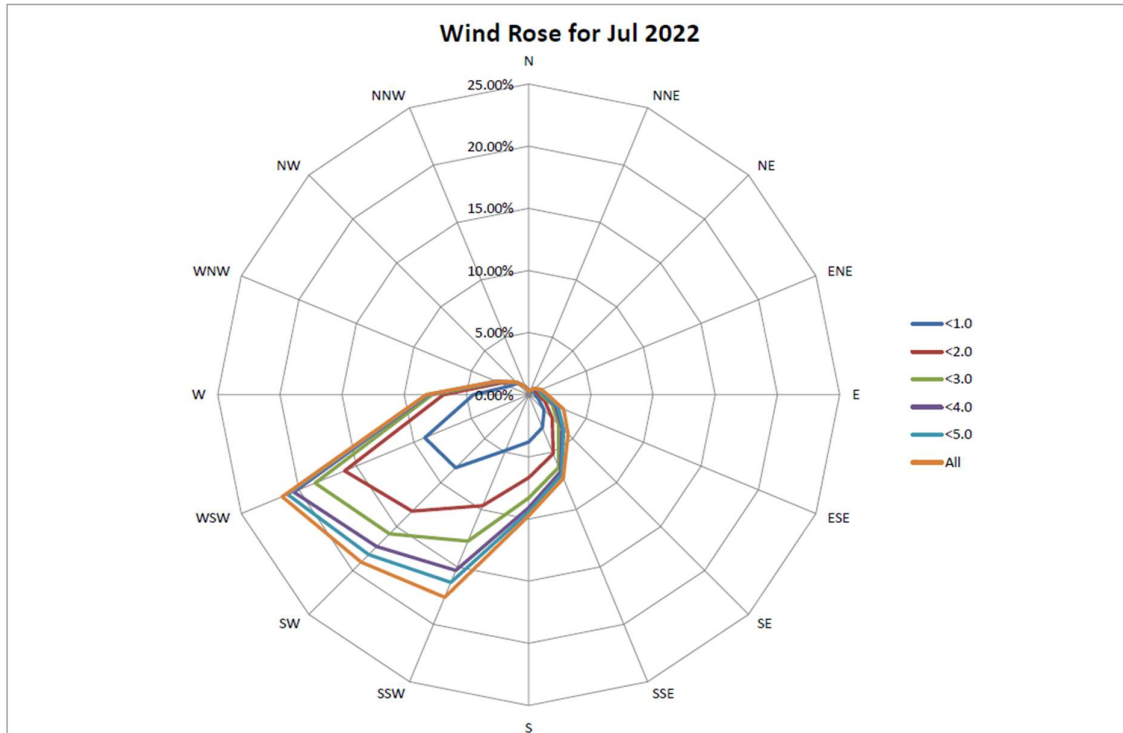
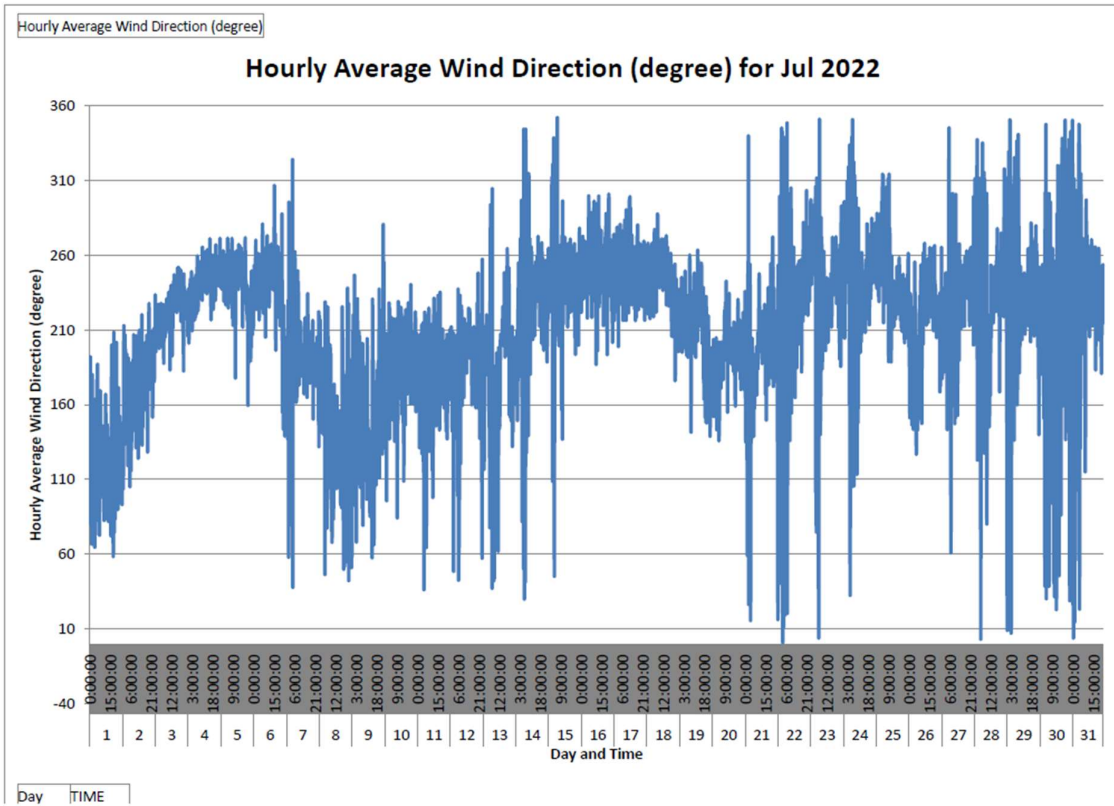


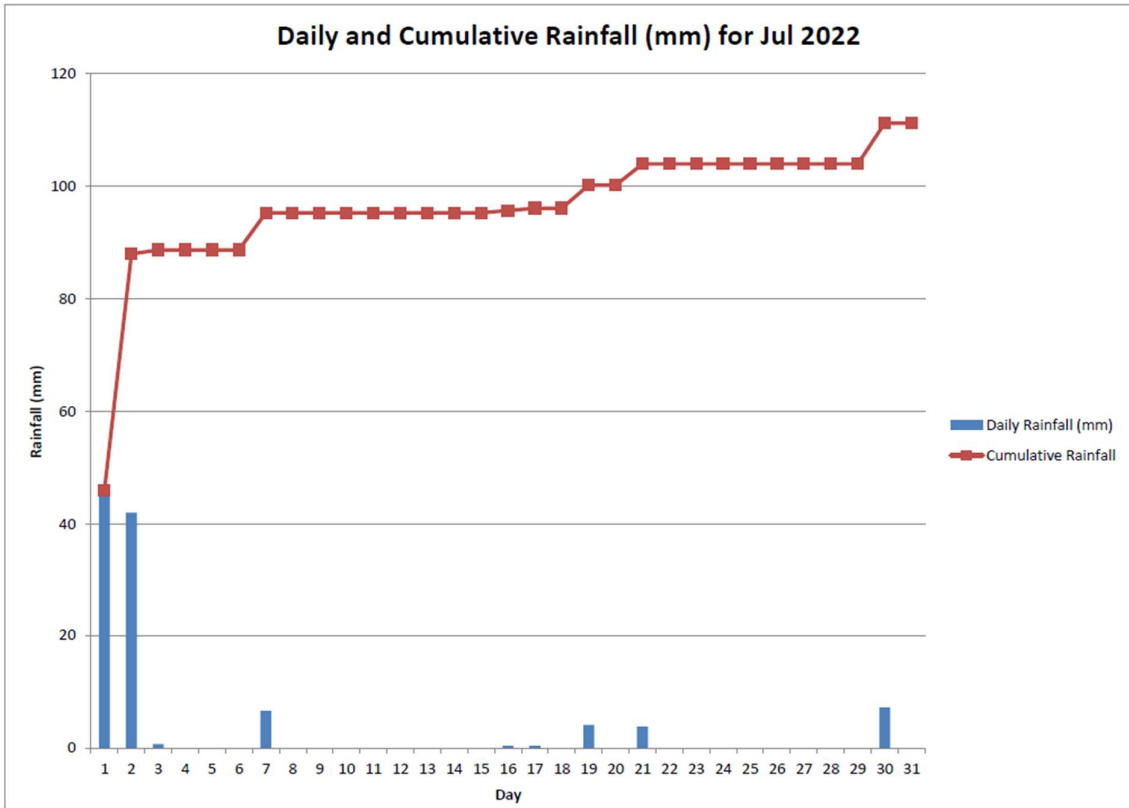




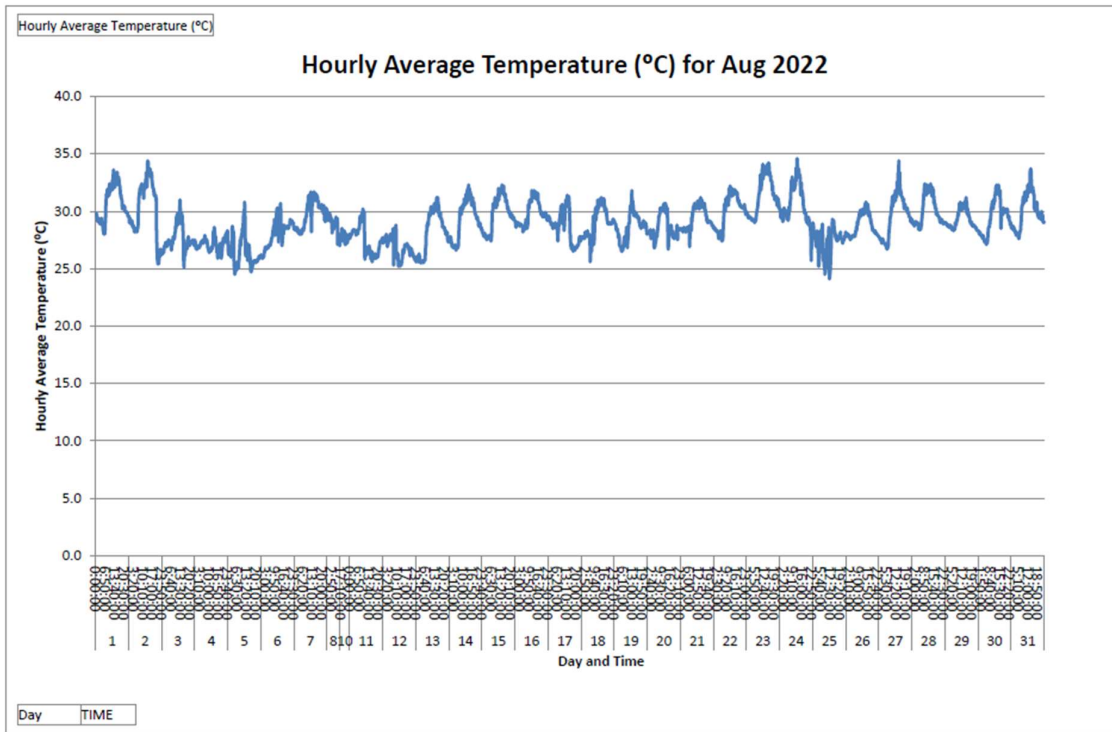




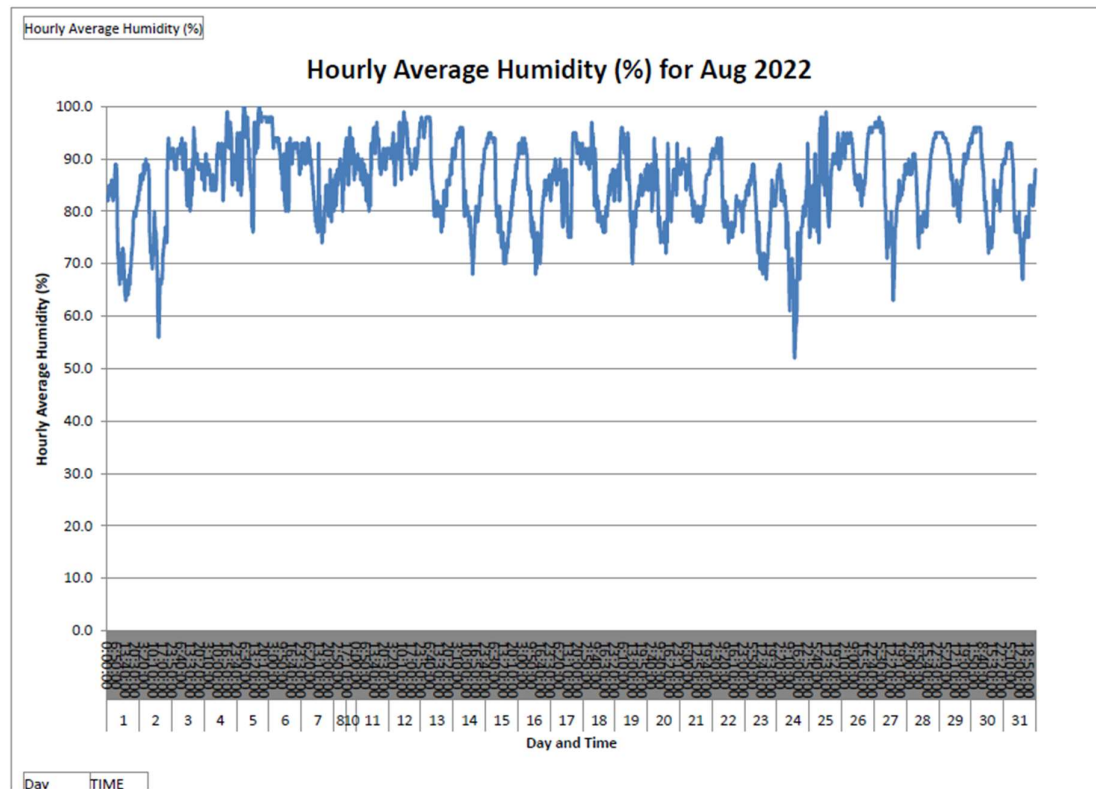




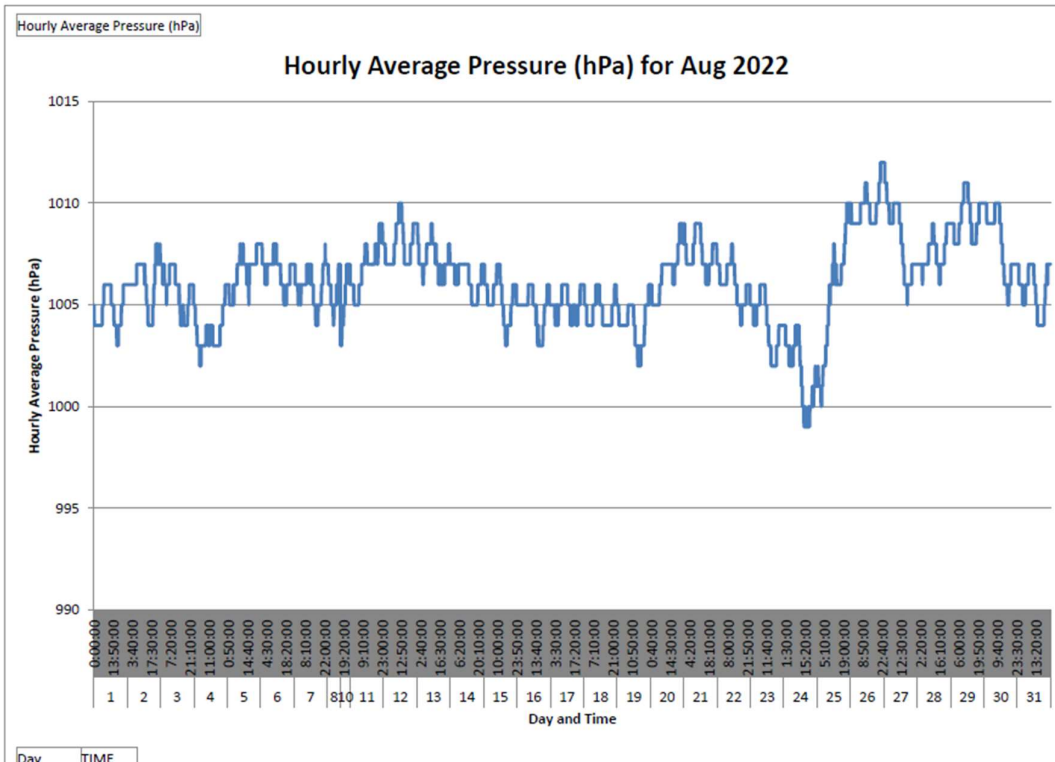
August 2022



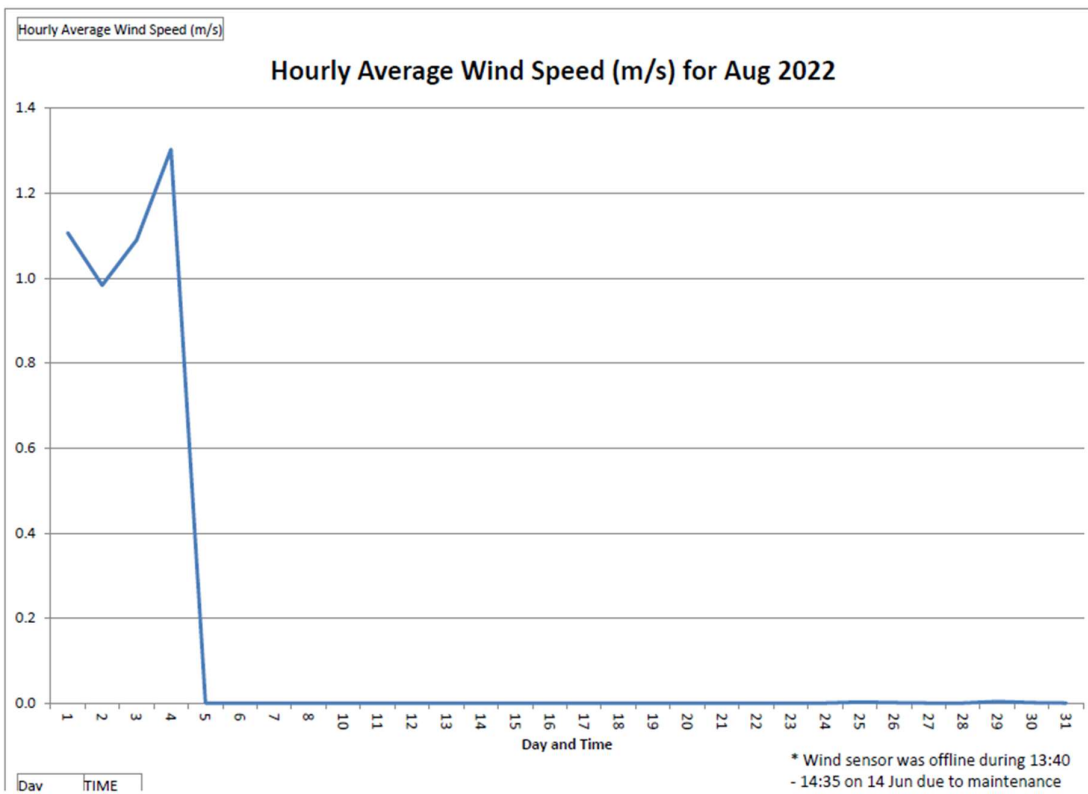
*Remark: Due to the met station system failure on 8 Aug 2022, the data from 8 Aug 2022 - 09:20 to 10 Aug 2022 - 17:00 has been lost.



*Remark: Due to the met station system failure on 8 Aug 2022, the data from 8 Aug 2022 - 09:20 to 10 Aug 2022 - 17:00 has been lost.

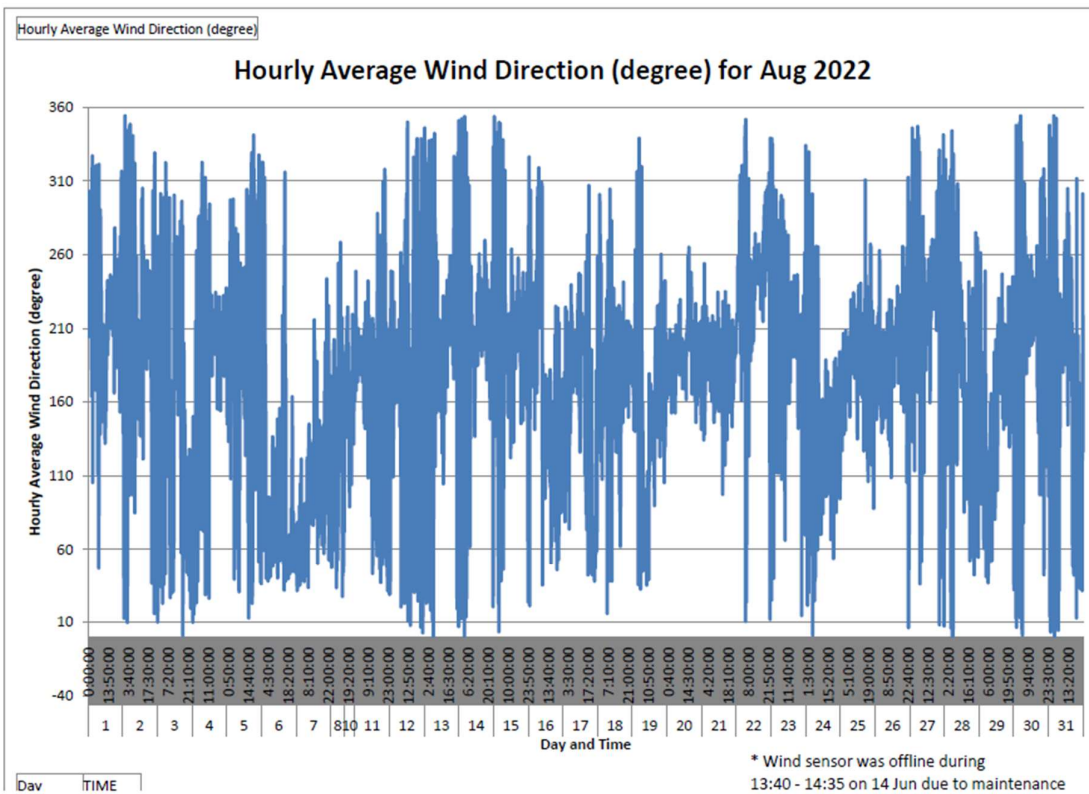


*Remark: Due to the met station system failure on 8 Aug 2022, the data from 8 Aug 2022 - 09:20 to 10 Aug 2022 - 17:00 has been lost.

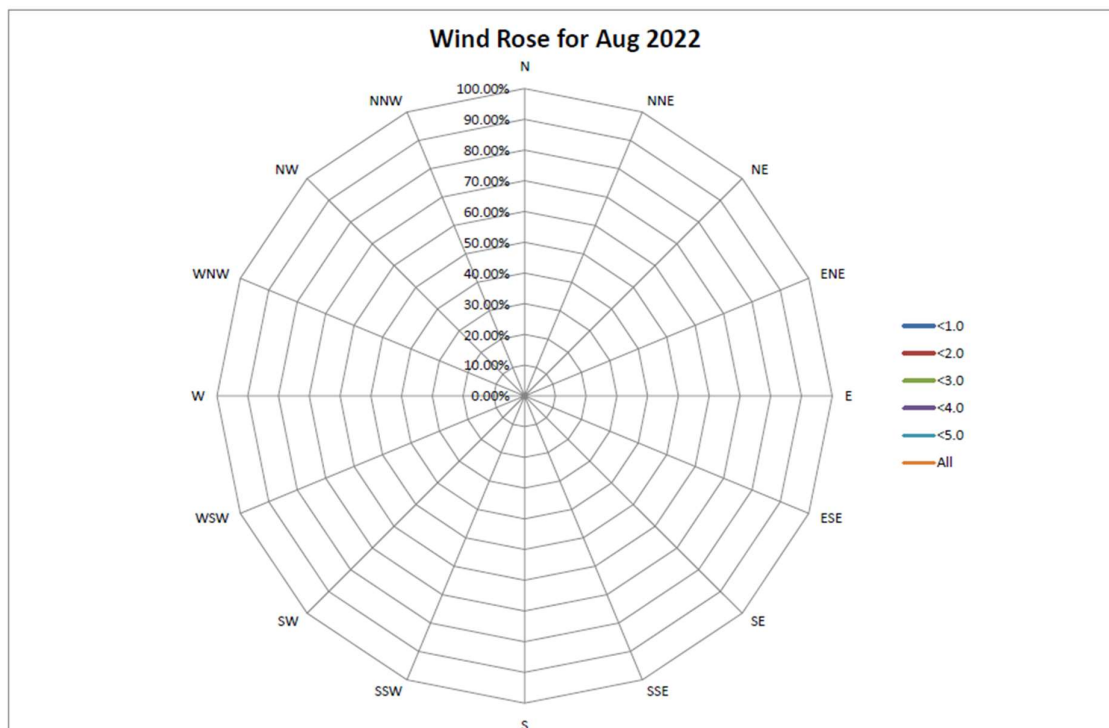


* Wind sensor was offline during 13:40 - 14:35 on 14 Jun due to maintenance

*Remark: Due to the Wind Speed Sensor has been disconnected on 4 Aug 2022, data loss in Aug 2022.
 Due to the met station system failure on 8 Aug 2022, the data from 8 Aug 2022 - 09:20 to 10 Aug 2022 - 17:00 has been lost.
 - Data from 5 Aug 2022 to 31 Aug 2022 is pending from Hong Kong Observatory and to be supplemented in subsequent version.

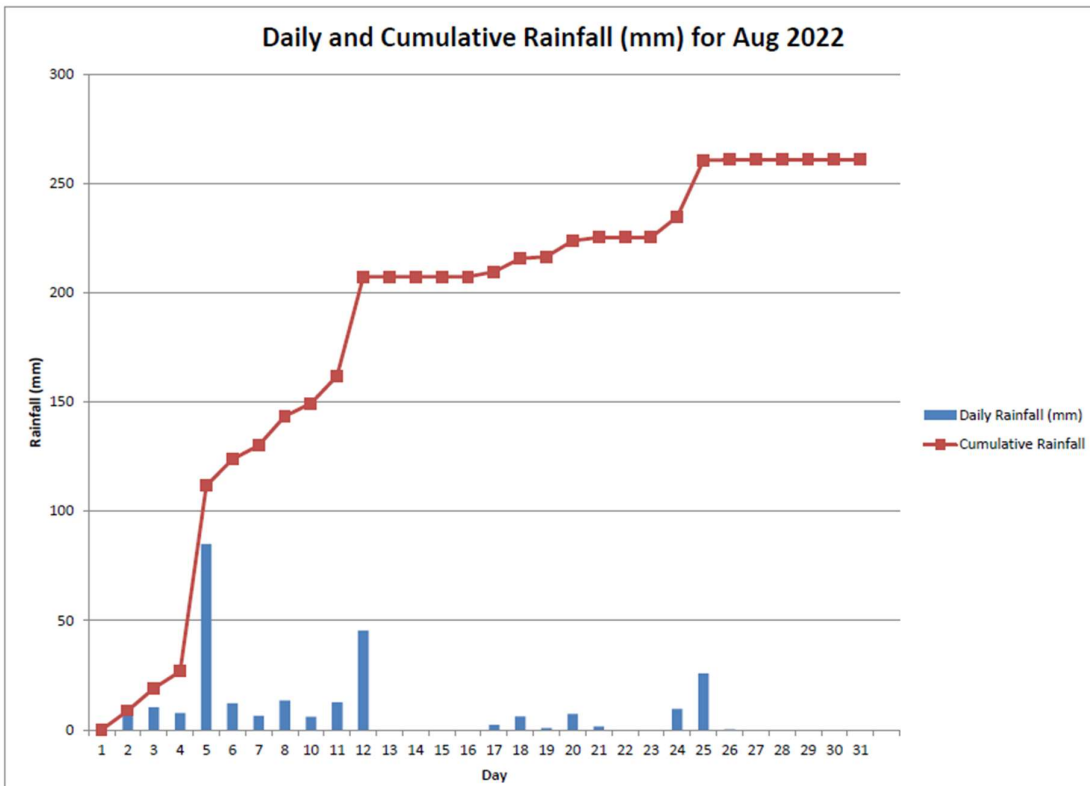


*Remark: Due to the met station system failure on 8 Aug 2022, the data from 8 Aug 2022 - 09:20 to 10 Aug 2022 - 17:00 has been lost.



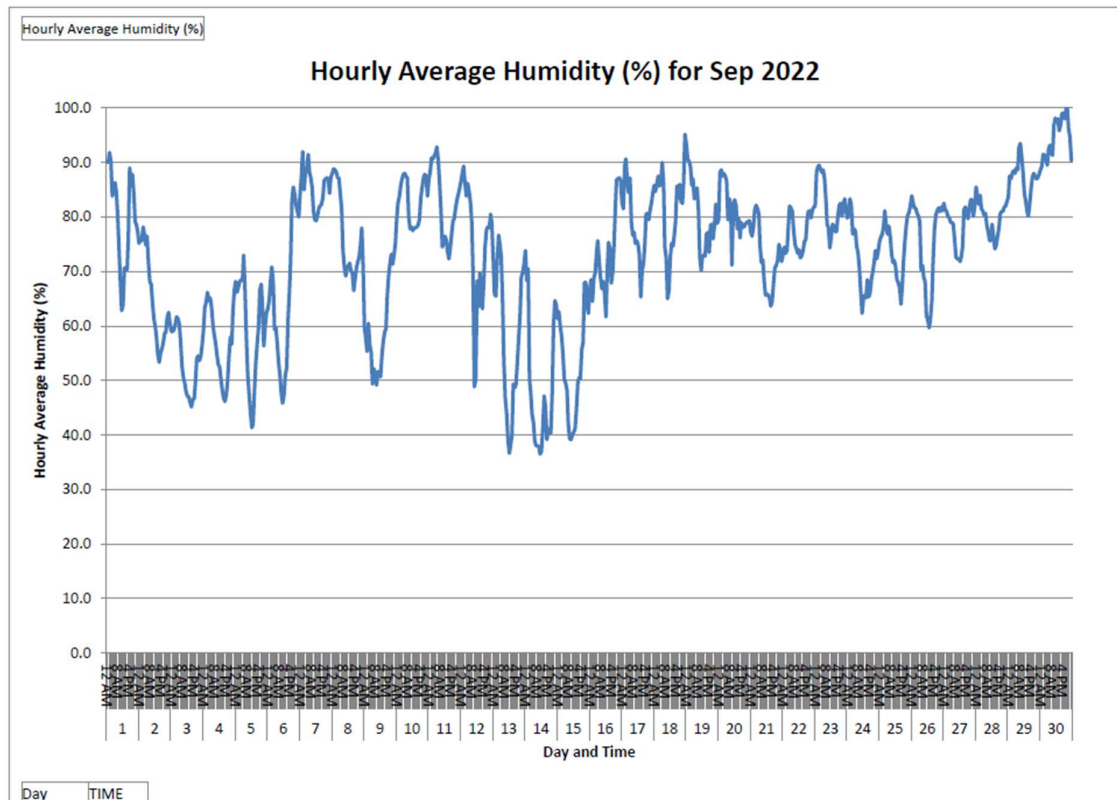
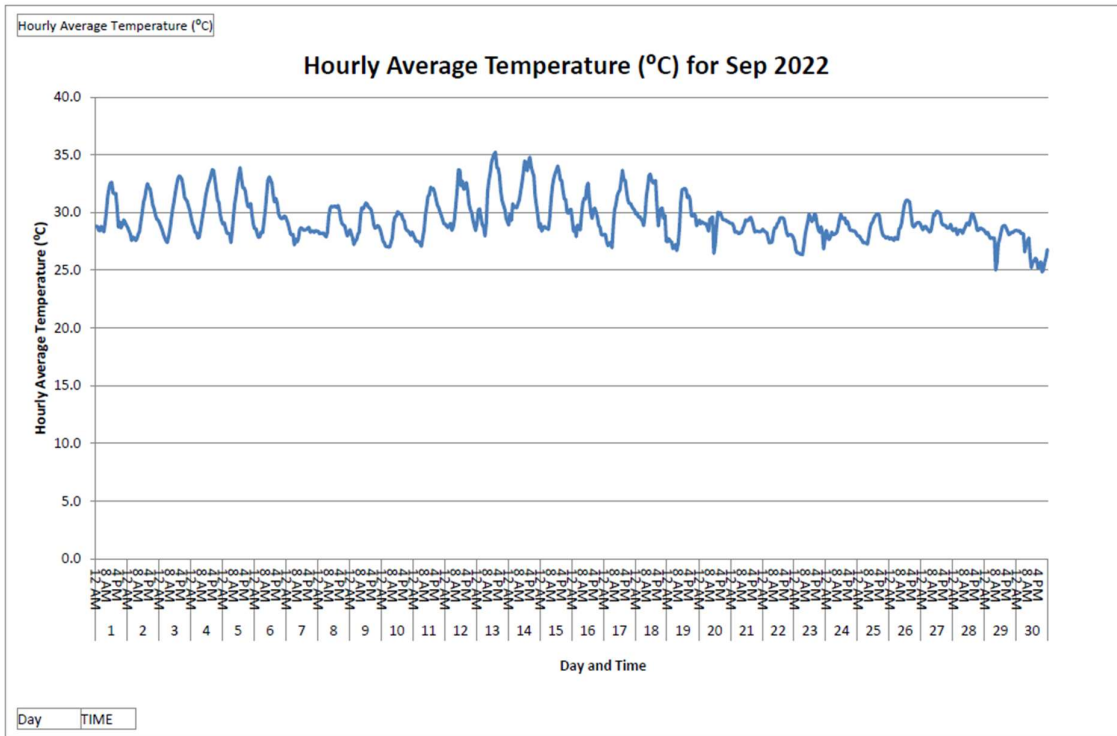
*Remark: Due to the Wind Speed Sensor has been disconnected on 4 Aug 2022, data loss in Aug 2022.

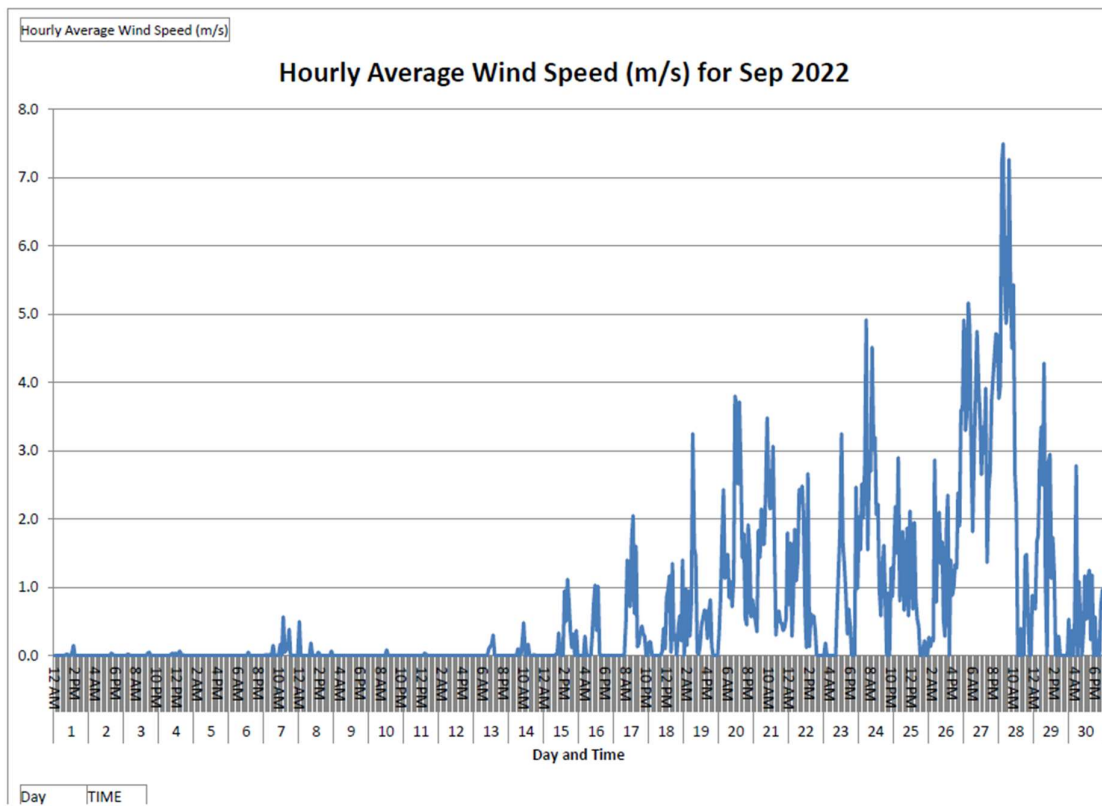
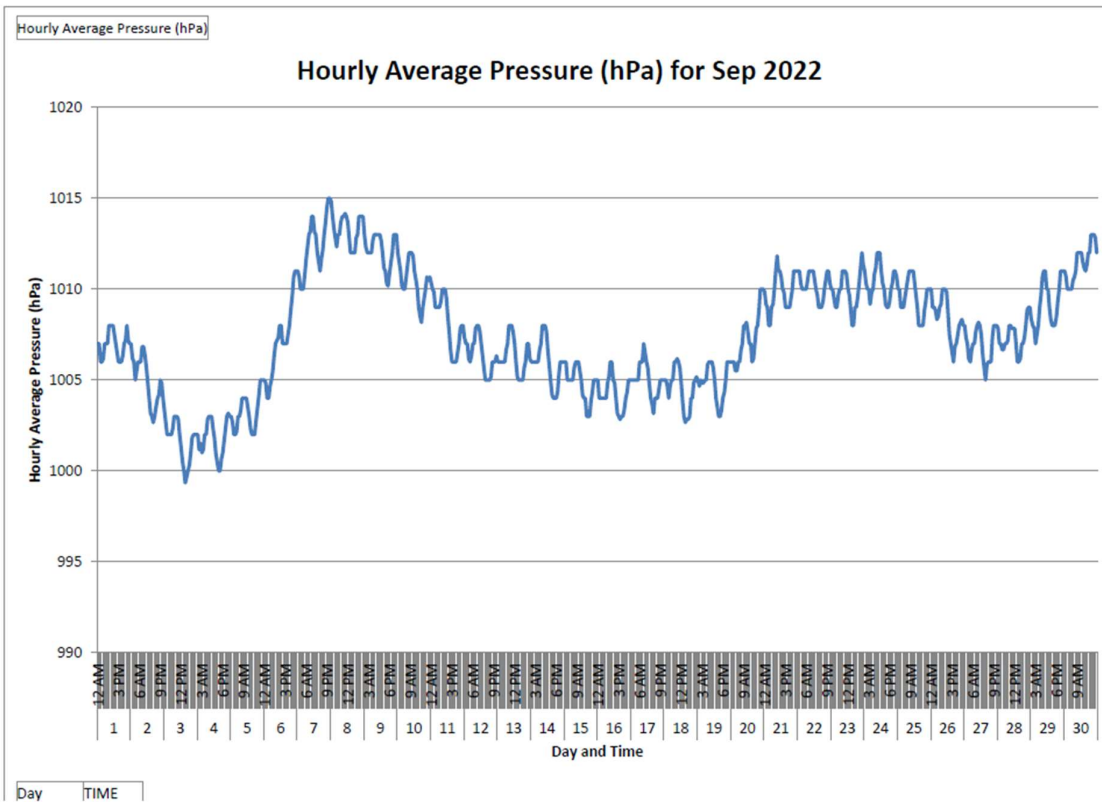
- Data from 5 Aug 2022 to 31 Aug 2022 is pending from Hong Kong Observatory and to be supplemented in subsequent version.

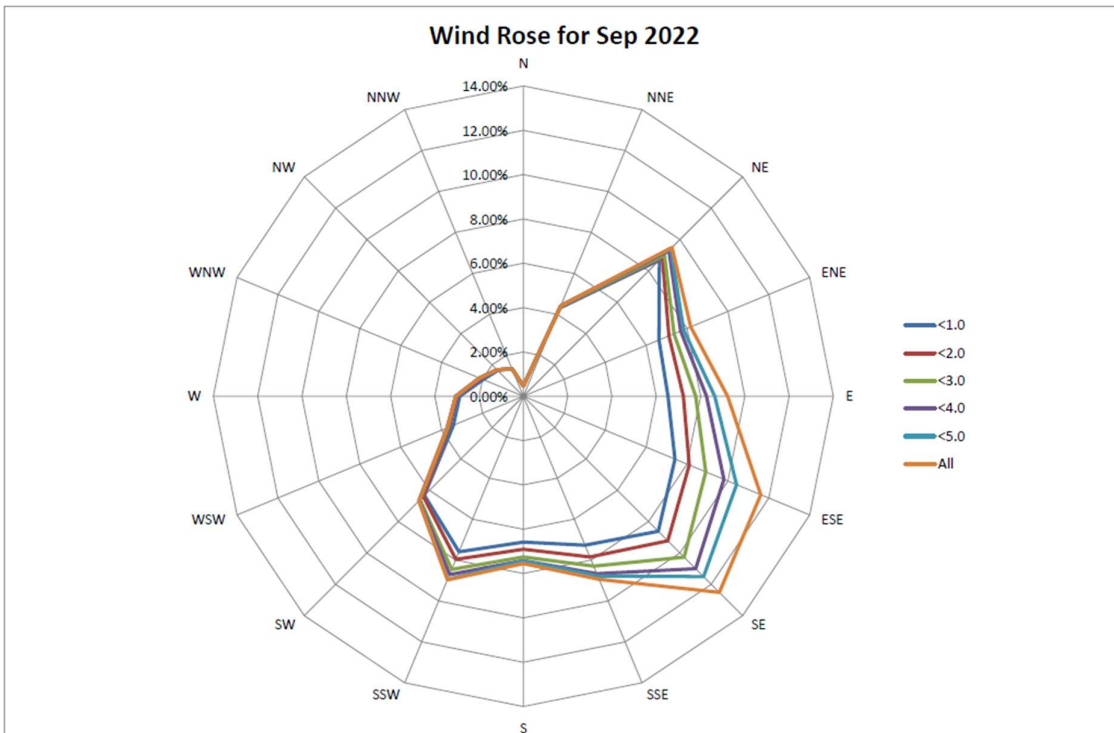
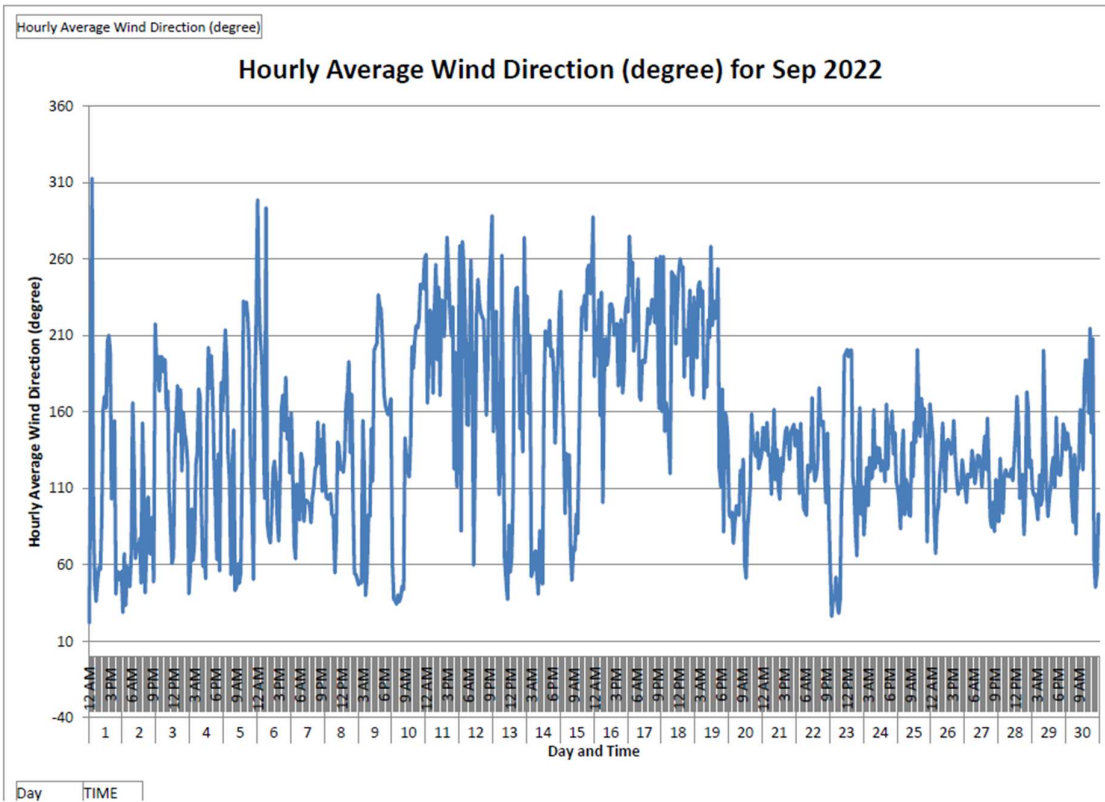


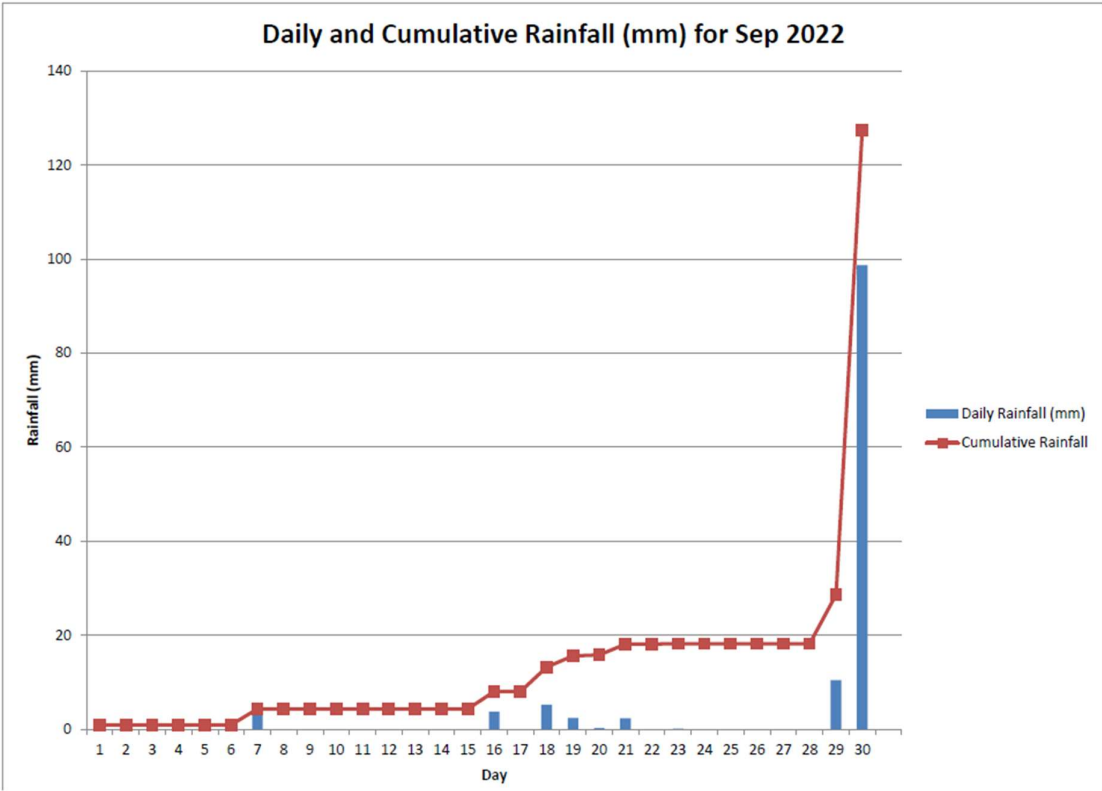
*Remark: Due to the met station system failure on 8 Aug 2022, the data from 8 Aug 2022 - 09:20 to 10 Aug 2022 - 17:00 has been lost.

September 2022

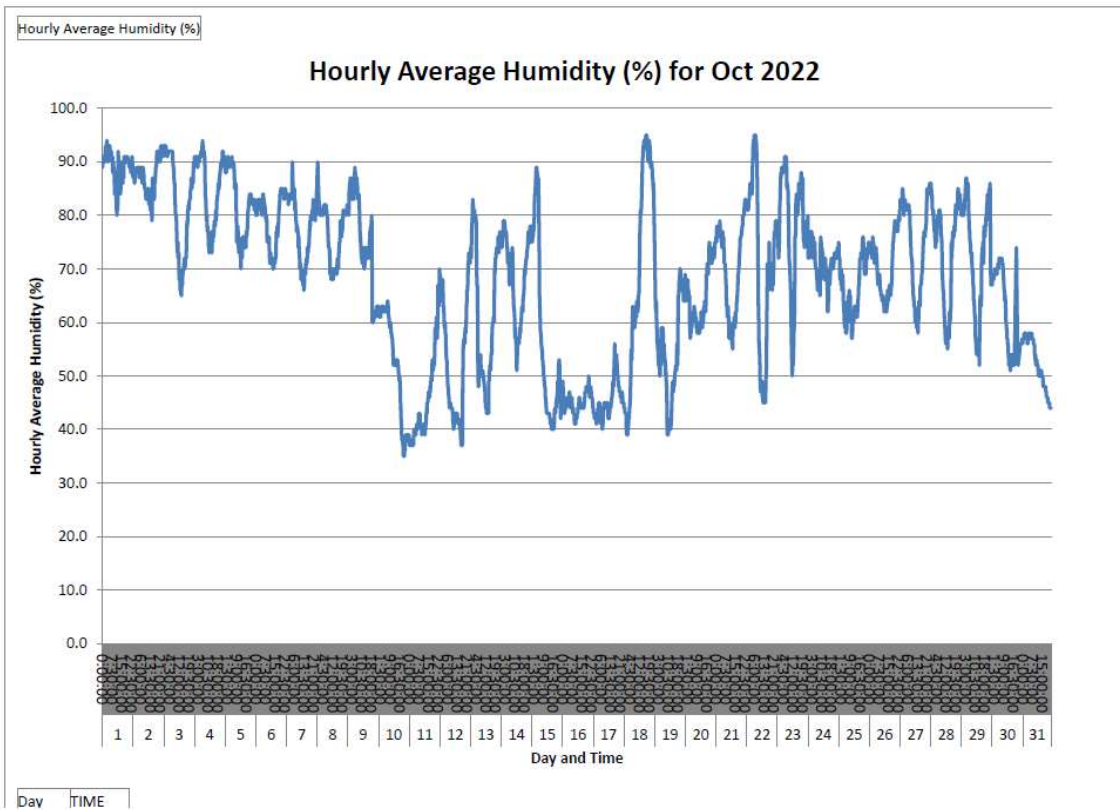
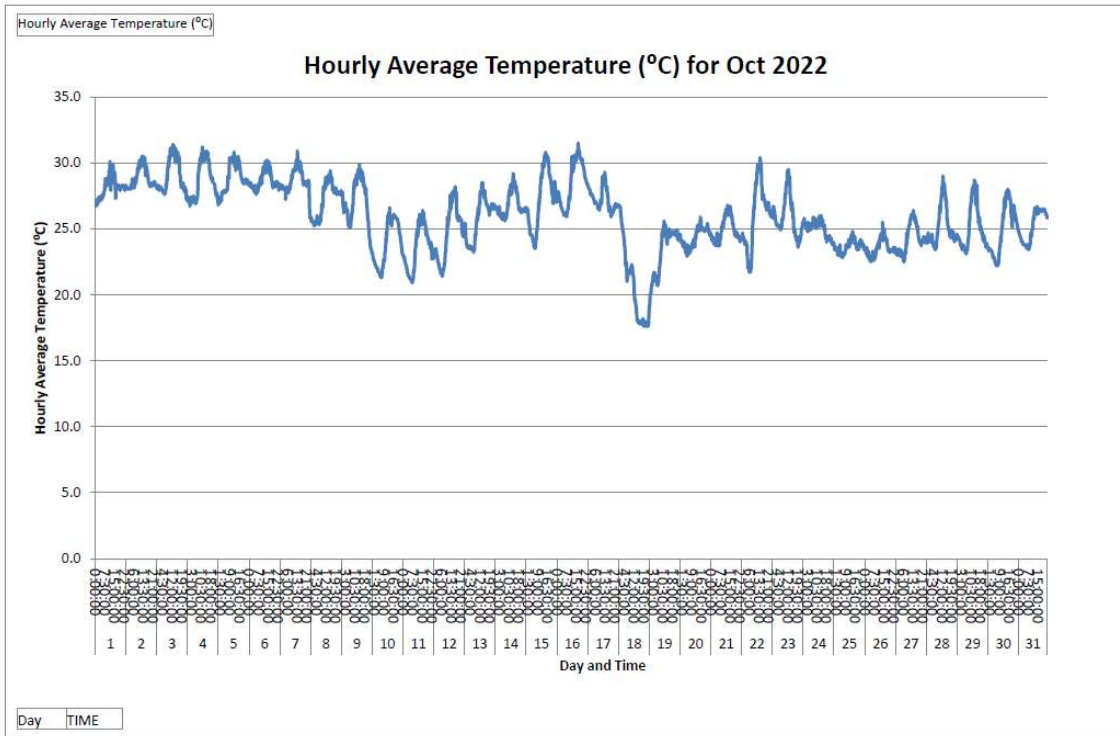


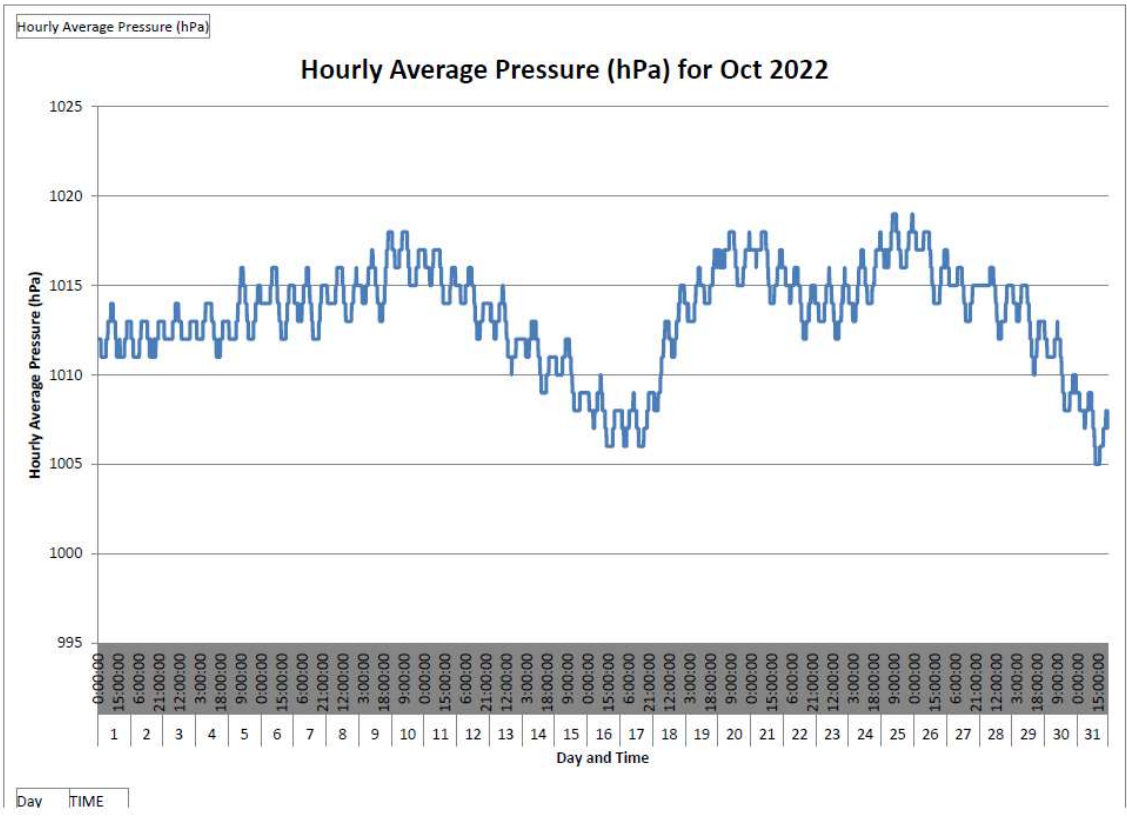


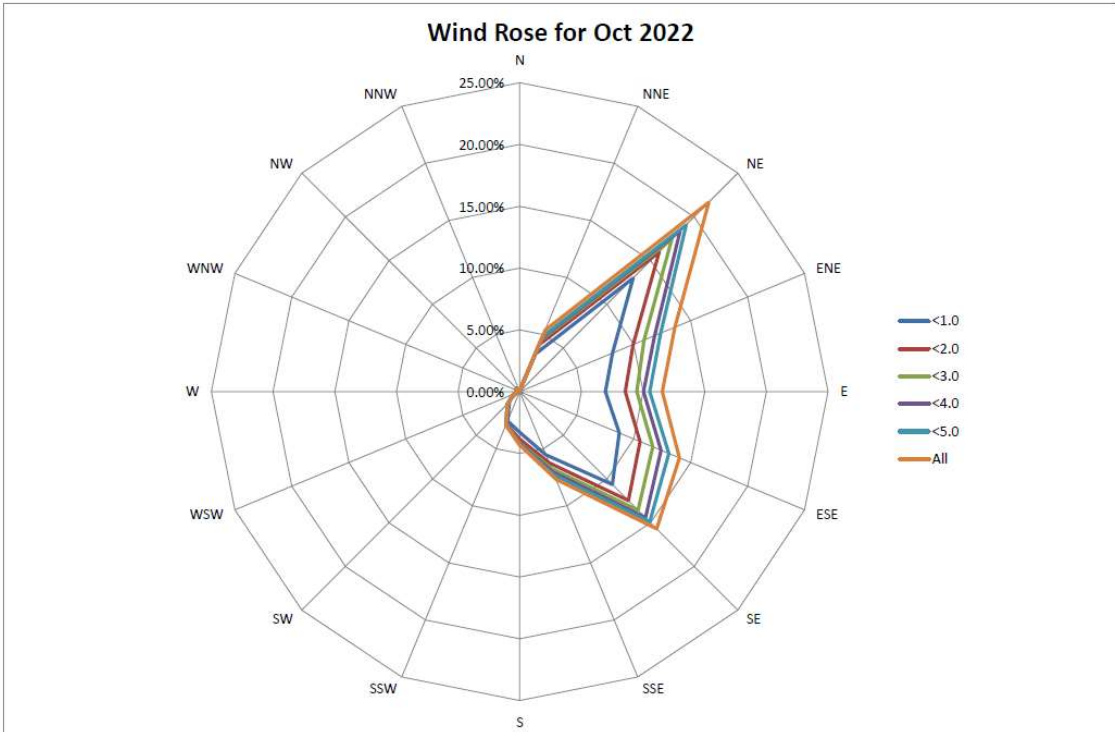
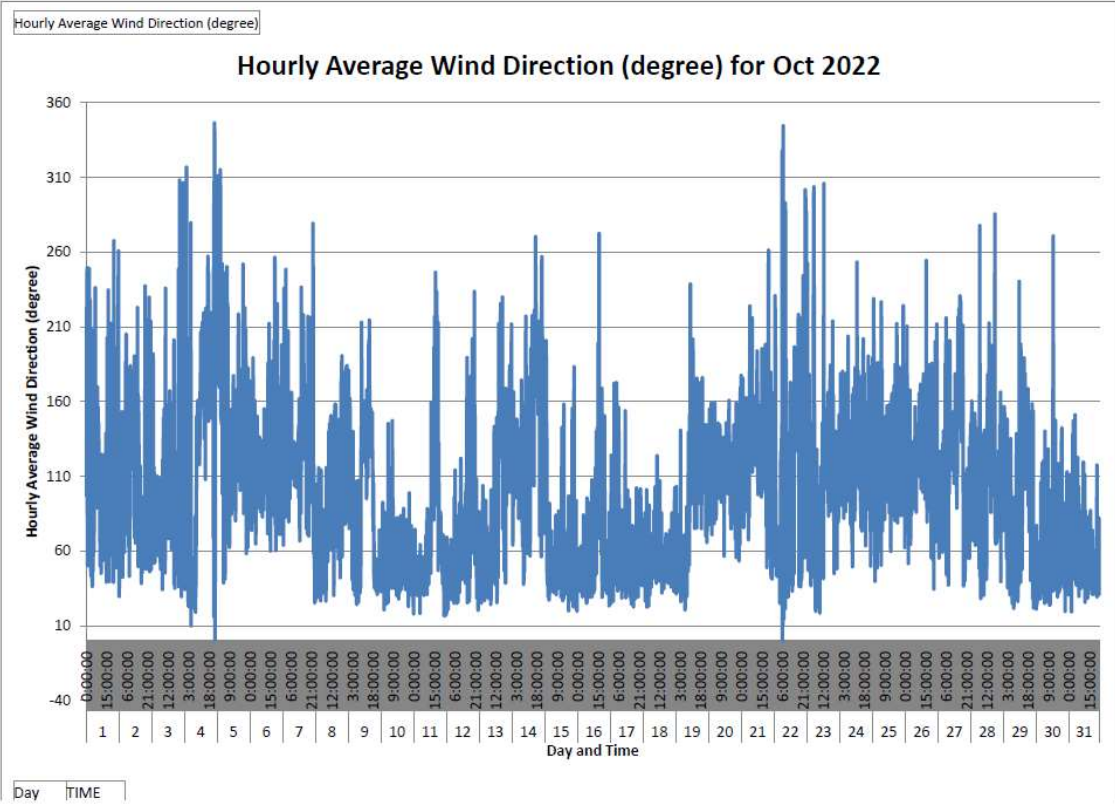


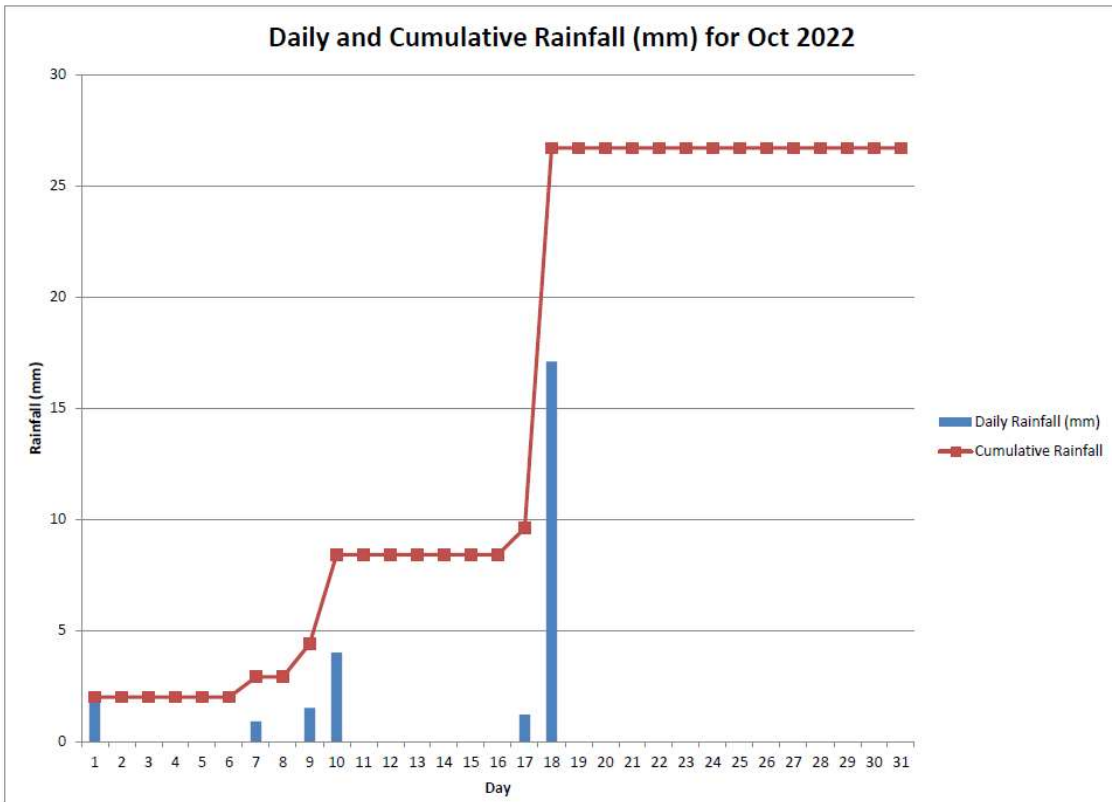


October 2022









November 2022

