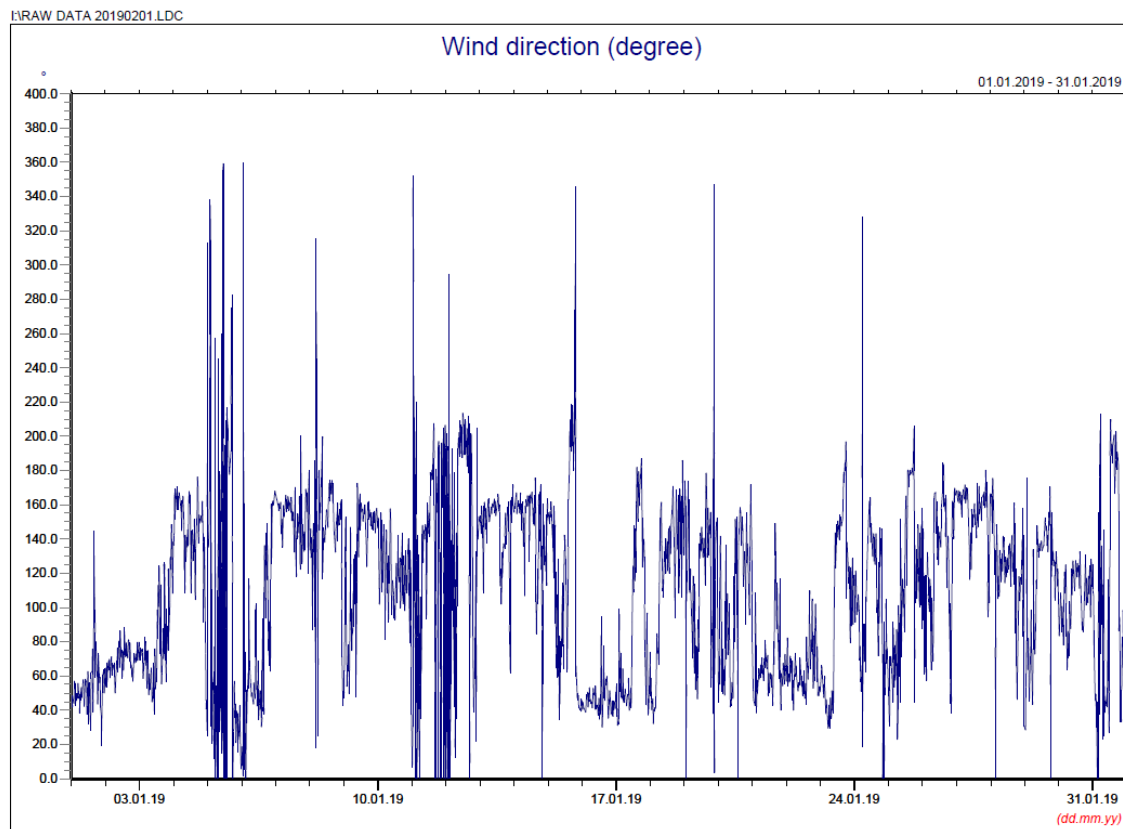
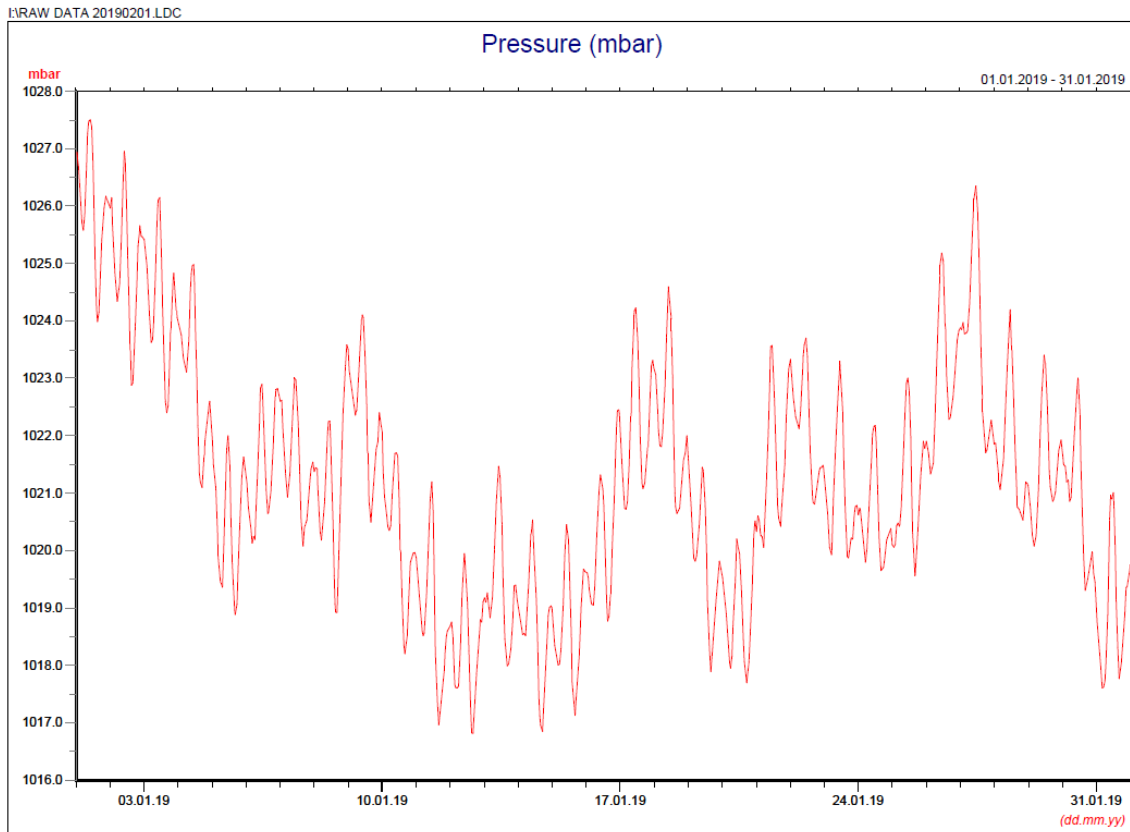


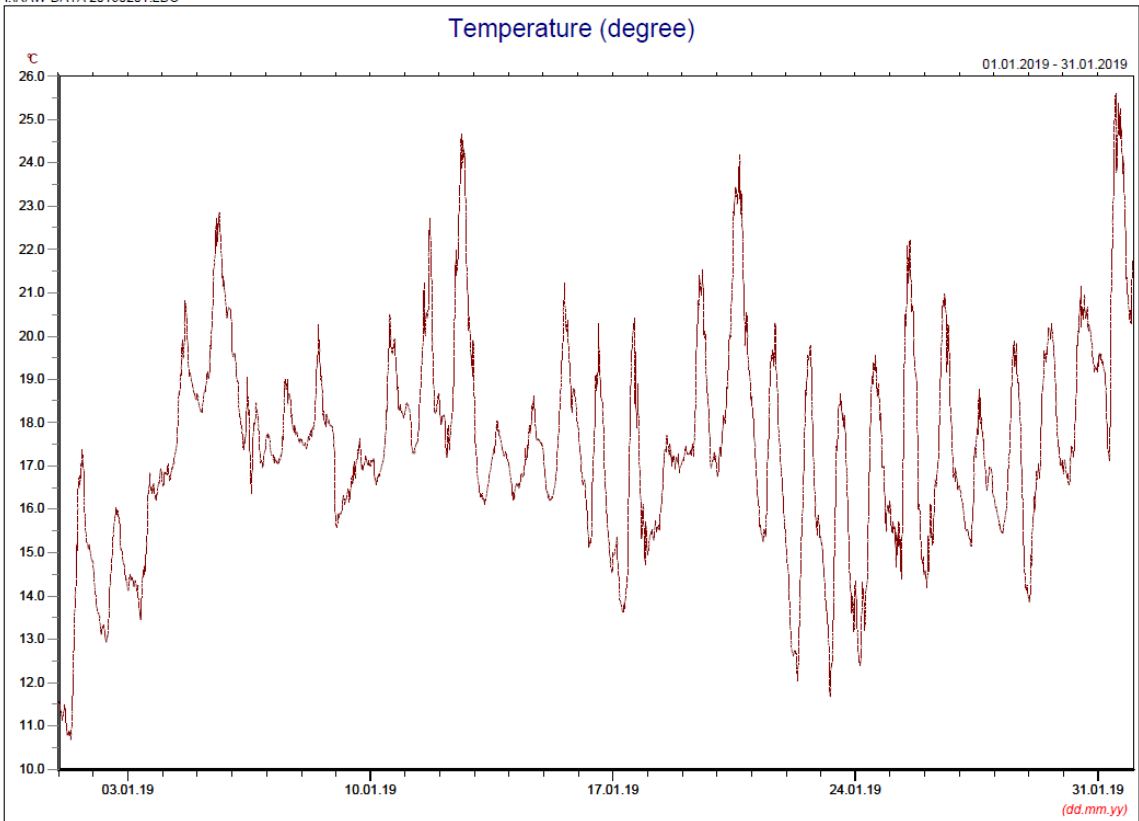
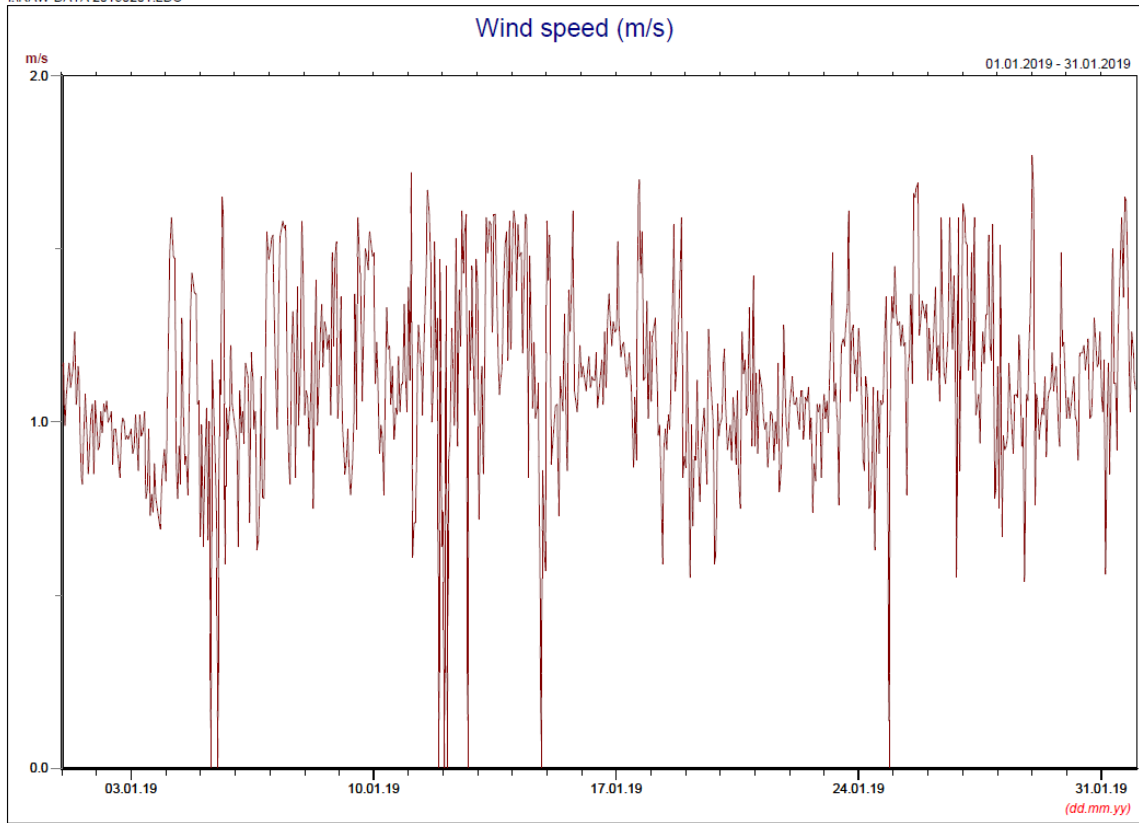
Annex D3

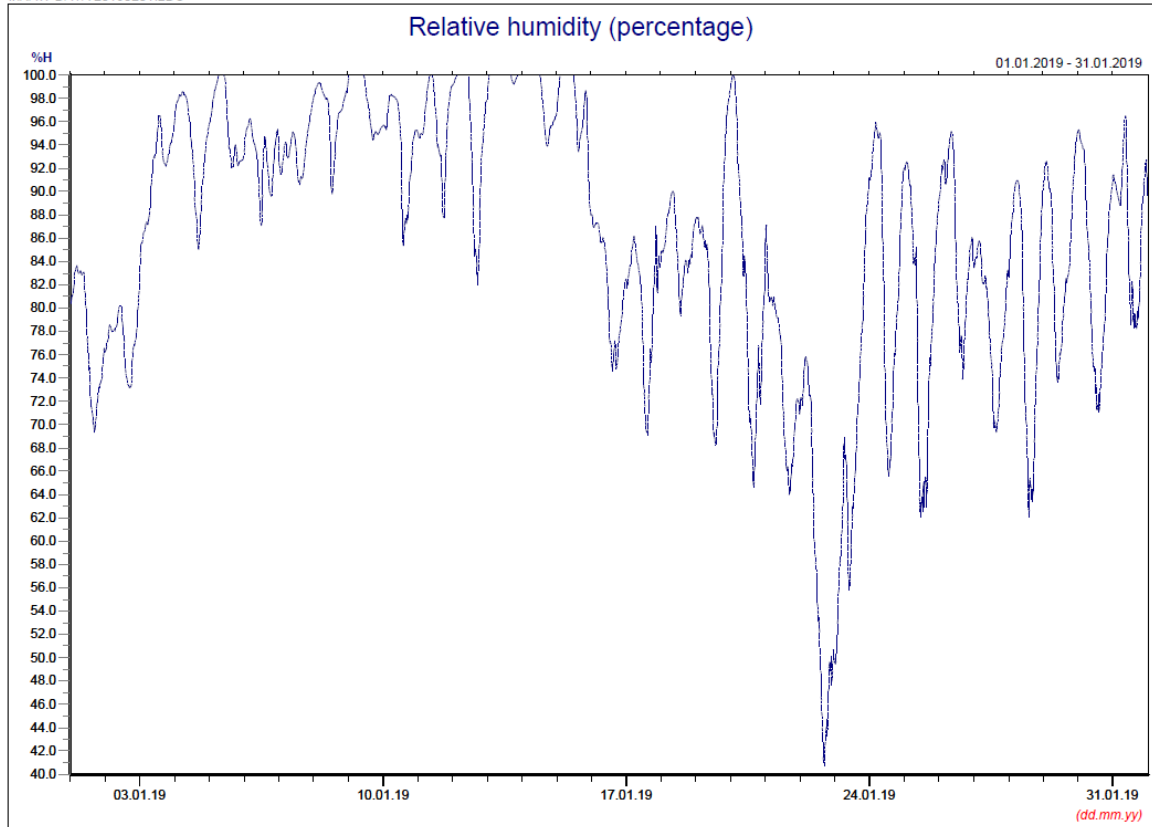
## Meteorological Data

Annex D3 Meteorological Data

January 2019







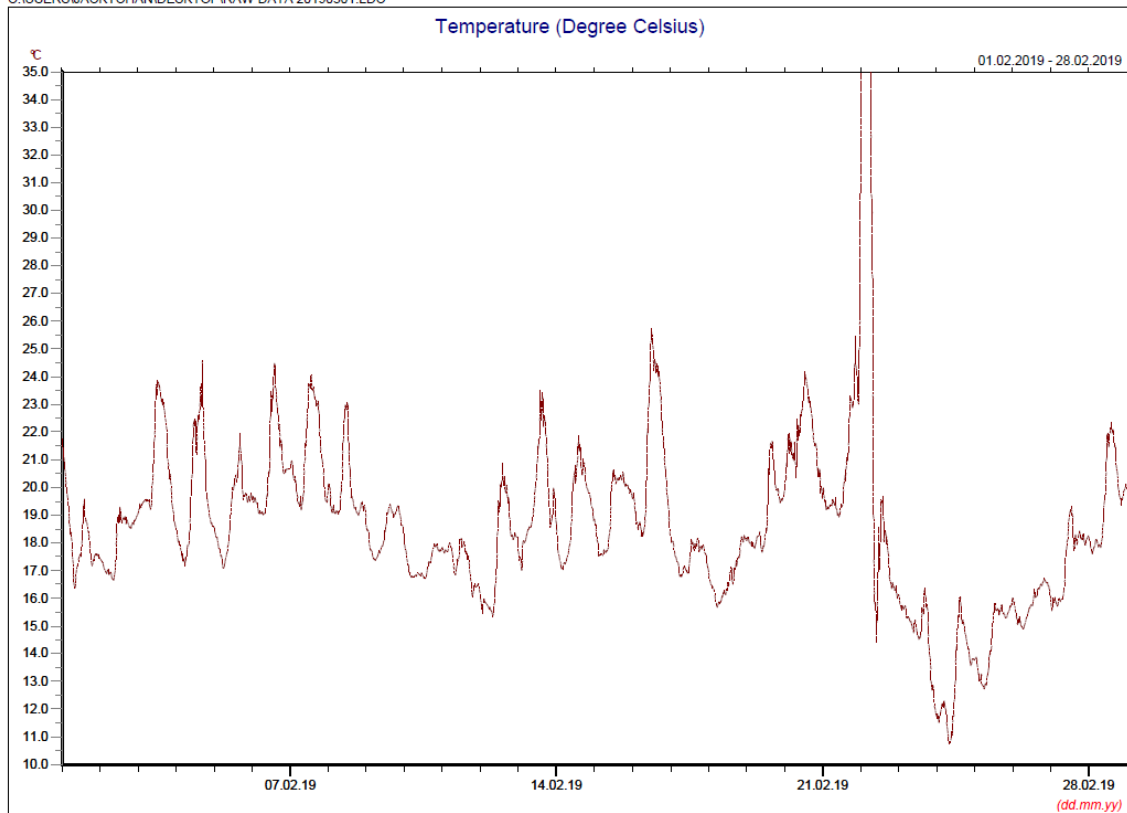
### Manual Rain Gauge Readings

January 2019

Date	Rainfall (mm)
1 Jan 19	0.0
2 Jan 19	0.0
3 Jan 19	0.3
4 Jan 19	0.1
5 Jan 19	0.0
6 Jan 19	0.0
7 Jan 19	0.0
8 Jan 19	1.2
9 Jan 19	0.4
10 Jan 19	0.0
11 Jan 19	0.0
12 Jan 19	1.6
13 Jan 19	0.6
14 Jan 19	1.6
15 Jan 19	0.1
16 Jan 19	0.0
17 Jan 19	0.0
18 Jan 19	0.0
19 Jan 19	0.4
20 Jan 19	0.0
21 Jan 19	0.0
22 Jan 19	0.0
23 Jan 19	0.0
24 Jan 19	0.0
25 Jan 19	0.0
26 Jan 19	0.0
27 Jan 19	0.0
28 Jan 19	0.0
29 Jan 19	0.0
30 Jan 19	0.0
31 Jan 19	0.0
<b>TOTAL RAINFALL</b>	<b>6.3</b>

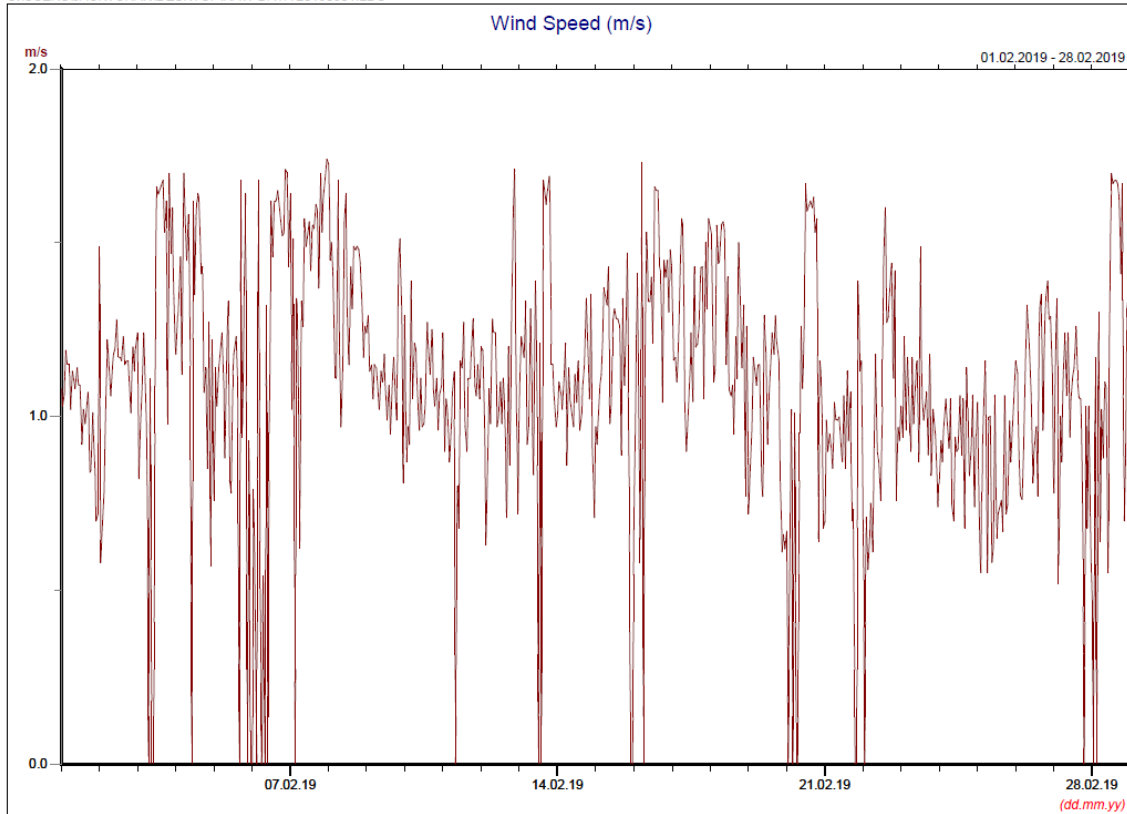
## February 2019

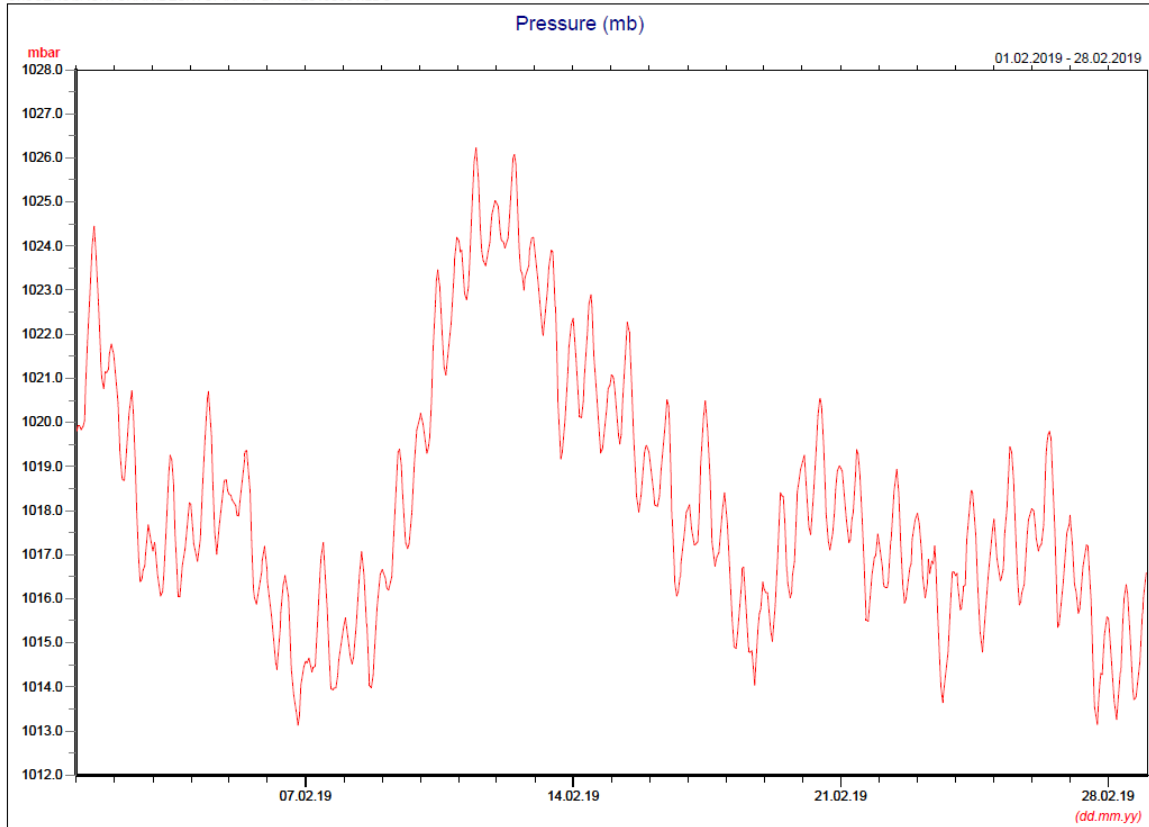
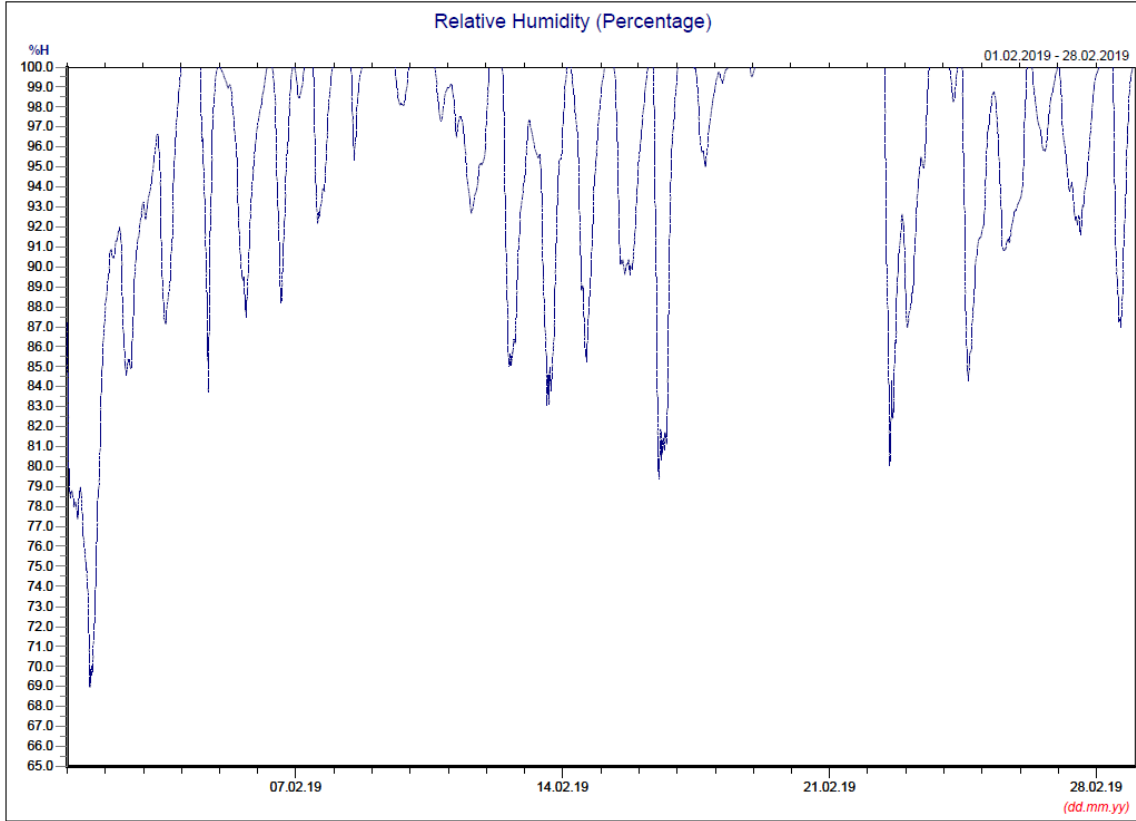
C:\USERS\JACKYCHAN\DESKTOP\RAW DATA 20190301.LDC

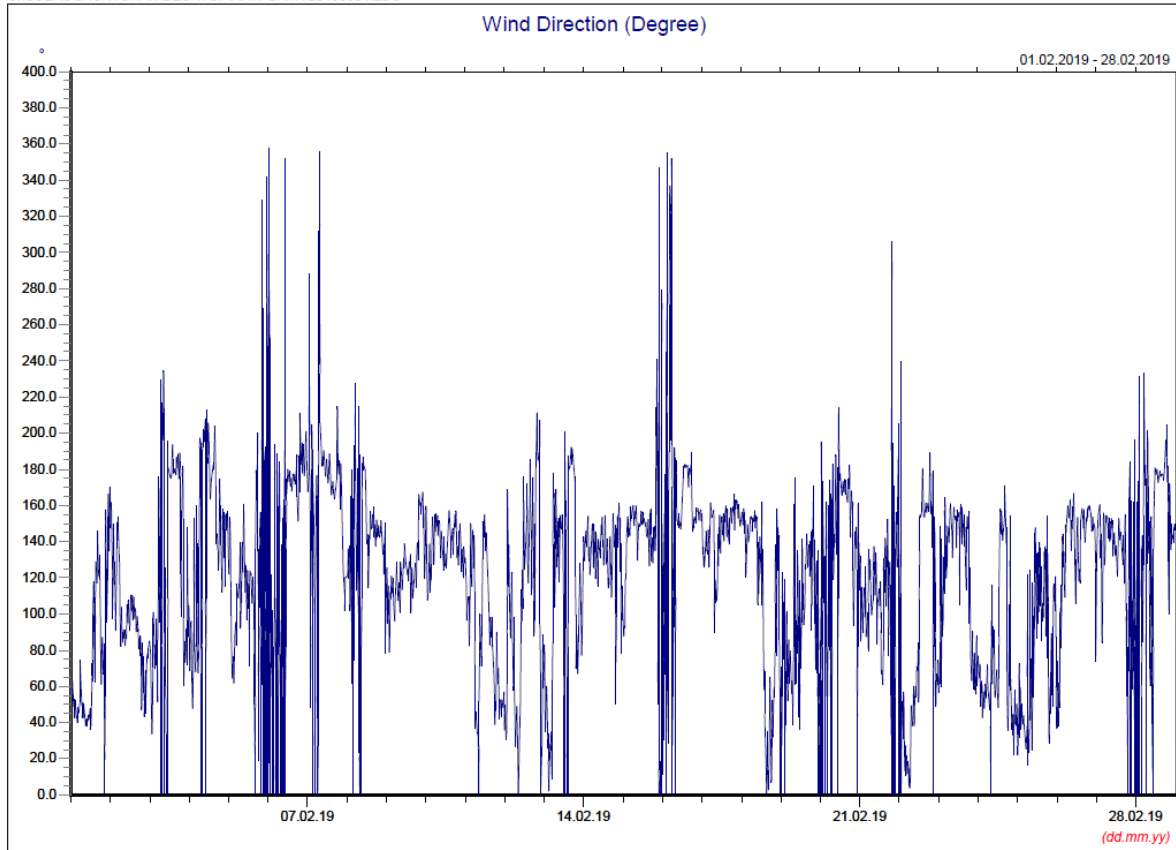


\* Note: Data on 22 February 2019 was discarded due to equipment failure.

C:\USERS\JACKYCHAN\DESKTOP\RAW DATA 20190301.LDC





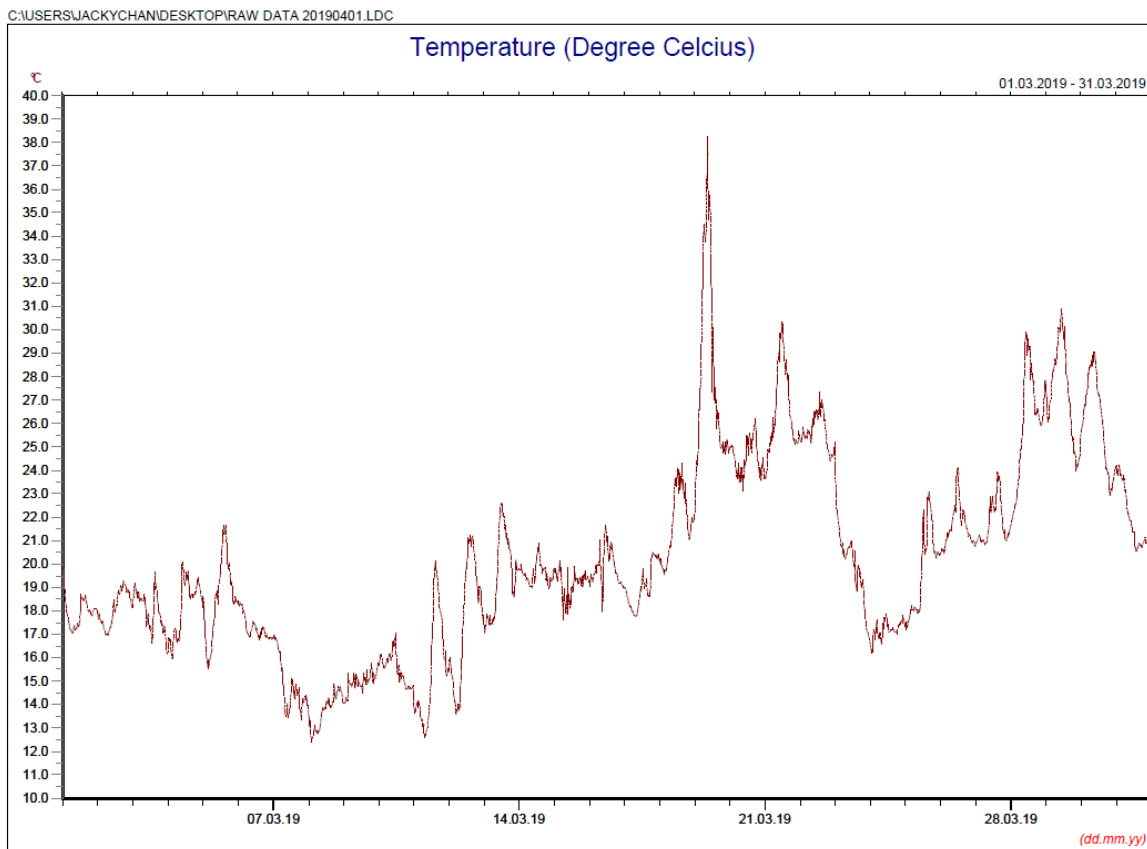


### Manual Rain Gauge Readings

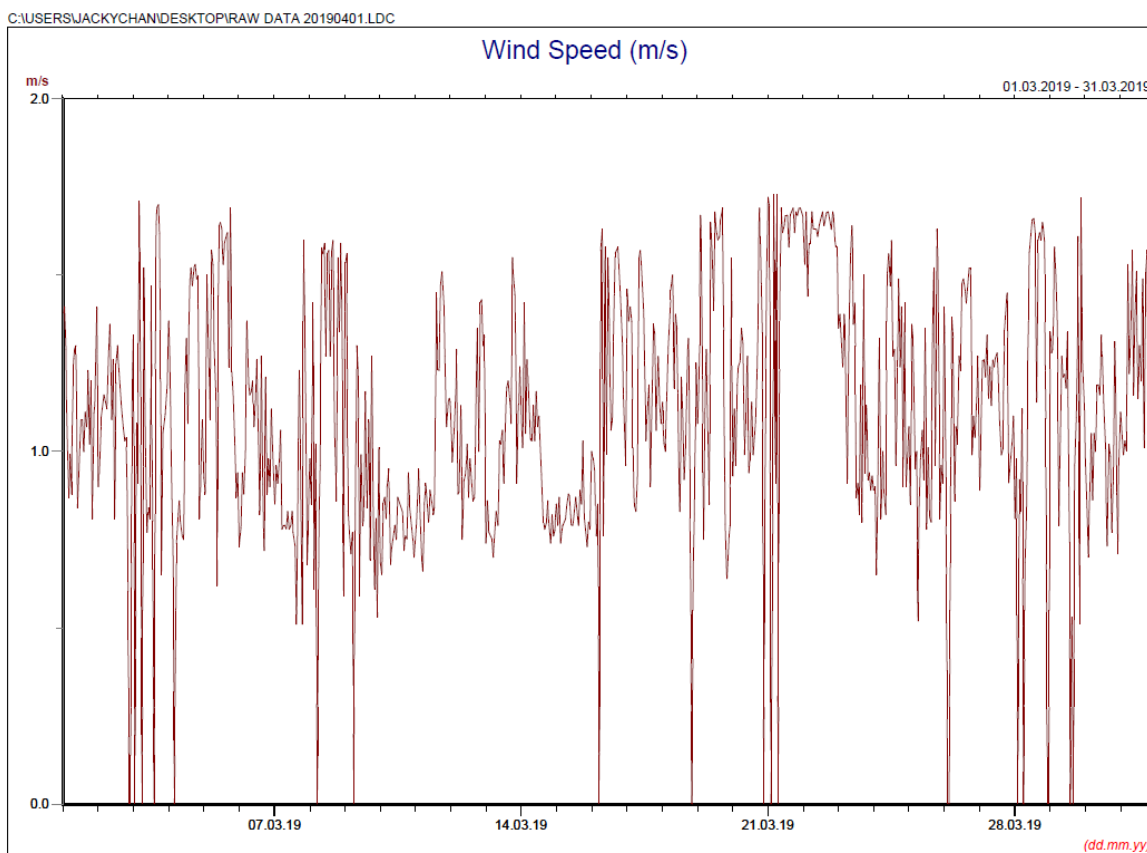
February 2019

Date	Rainfall (mm)
1 Feb 19	0.0
2 Feb 19	0.0
3 Feb 19	0.0
4 Feb 19	0.0
5 Feb 19	0.0
6 Feb 19	0.0
7 Feb 19	0.0
8 Feb 19	0.4
9 Feb 19	1.4
10 Feb 19	0.2
11 Feb 19	0.6
12 Feb 19	0.0
13 Feb 19	0.0
14 Feb 19	0.3
15 Feb 19	0.1
16 Feb 19	0.0
17 Feb 19	0.0
18 Feb 19	21.4
19 Feb 19	42.8
20 Feb 19	0.2
21 Feb 19	0.2
22 Feb 19	0.0
23 Feb 19	16.0
24 Feb 19	0.2
25 Feb 19	0.3
26 Feb 19	0.4
27 Feb 19	0.0
28 Feb 19	0.0
<b>TOTAL RAINFALL</b>	<b>84.5</b>

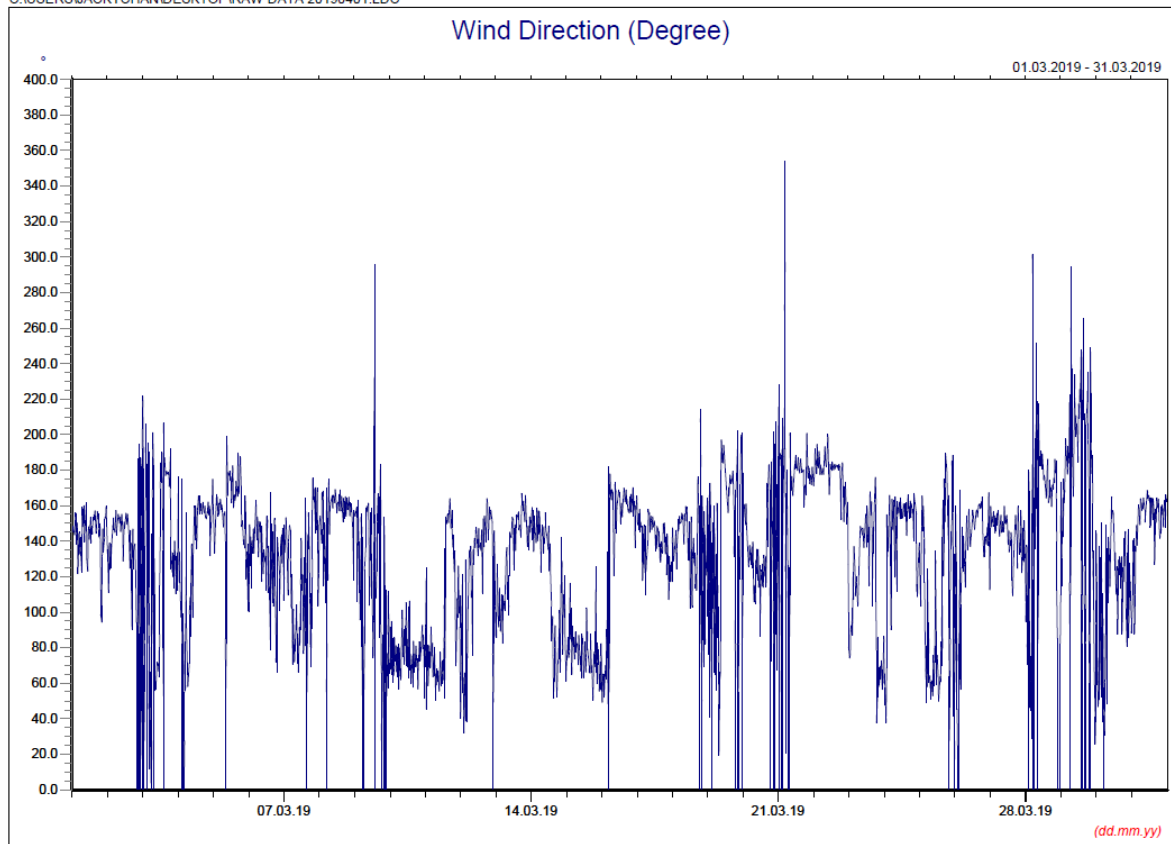
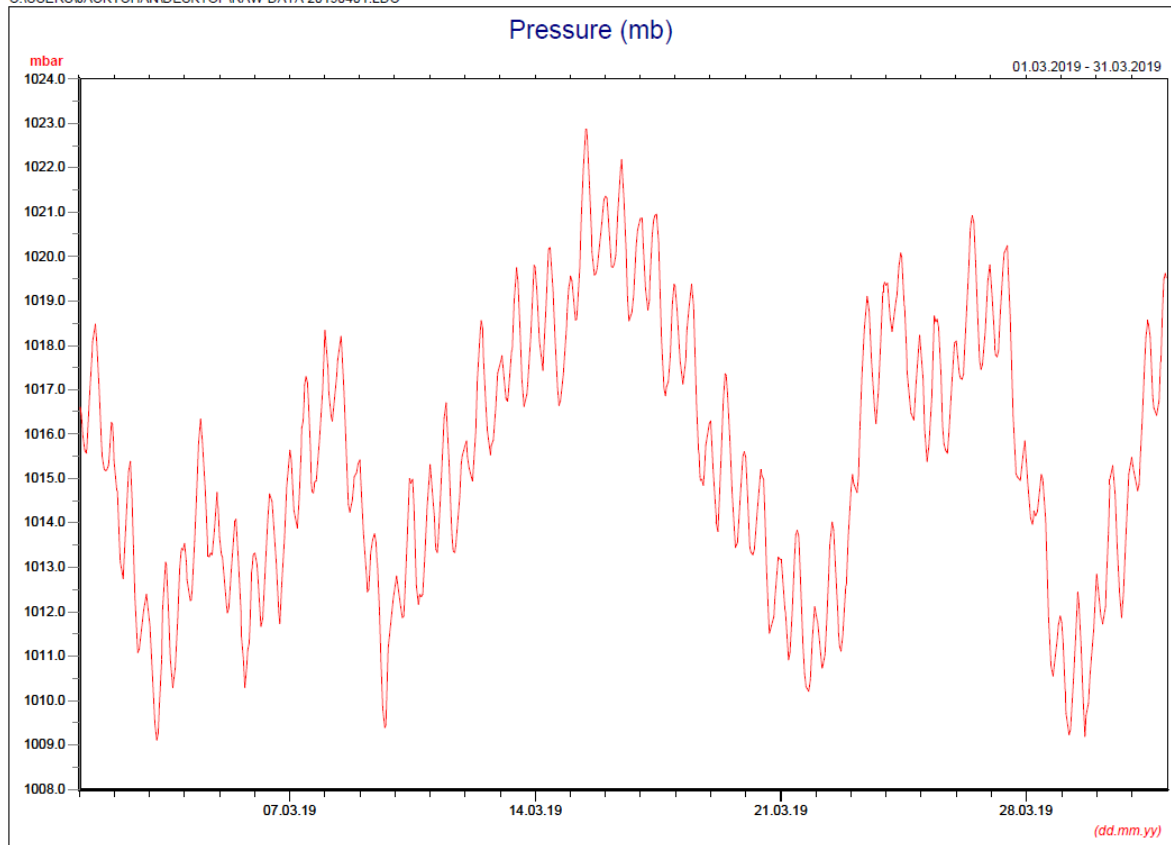
# March 2019

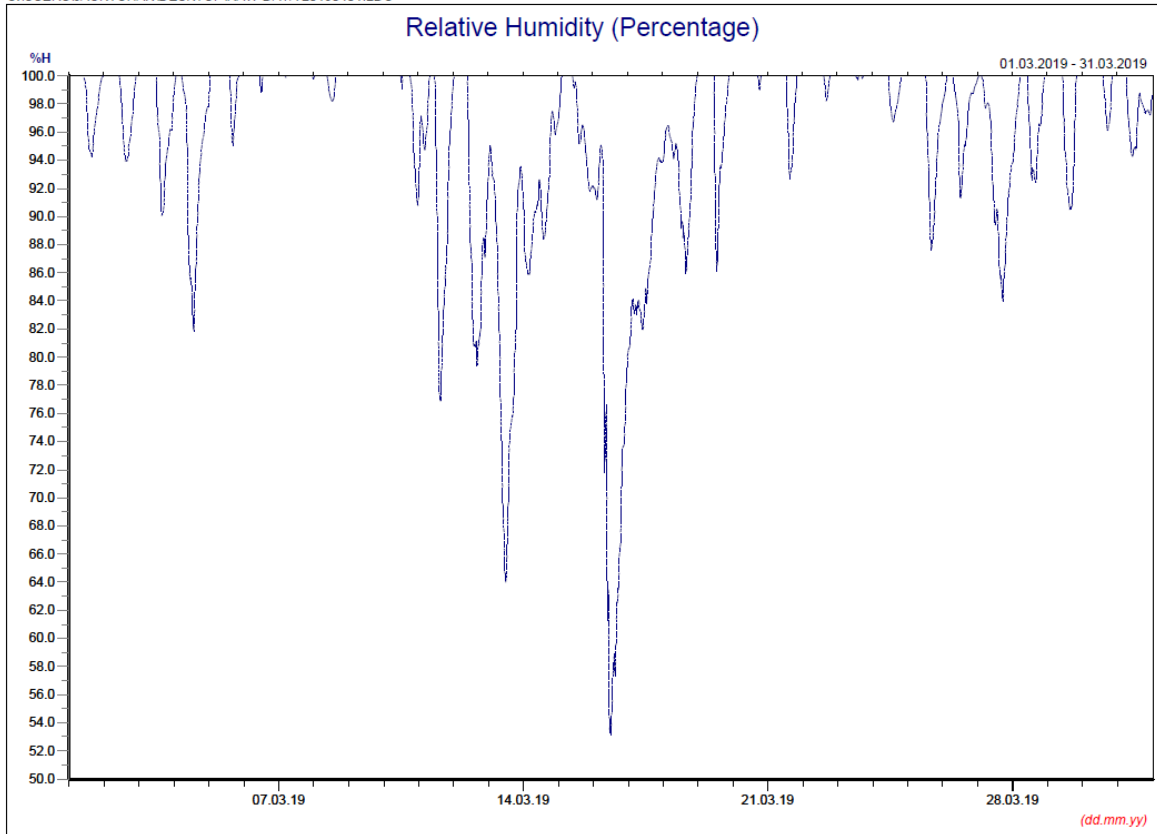


\* Note: Data on 19 March 2019 was discarded due to equipment failure.









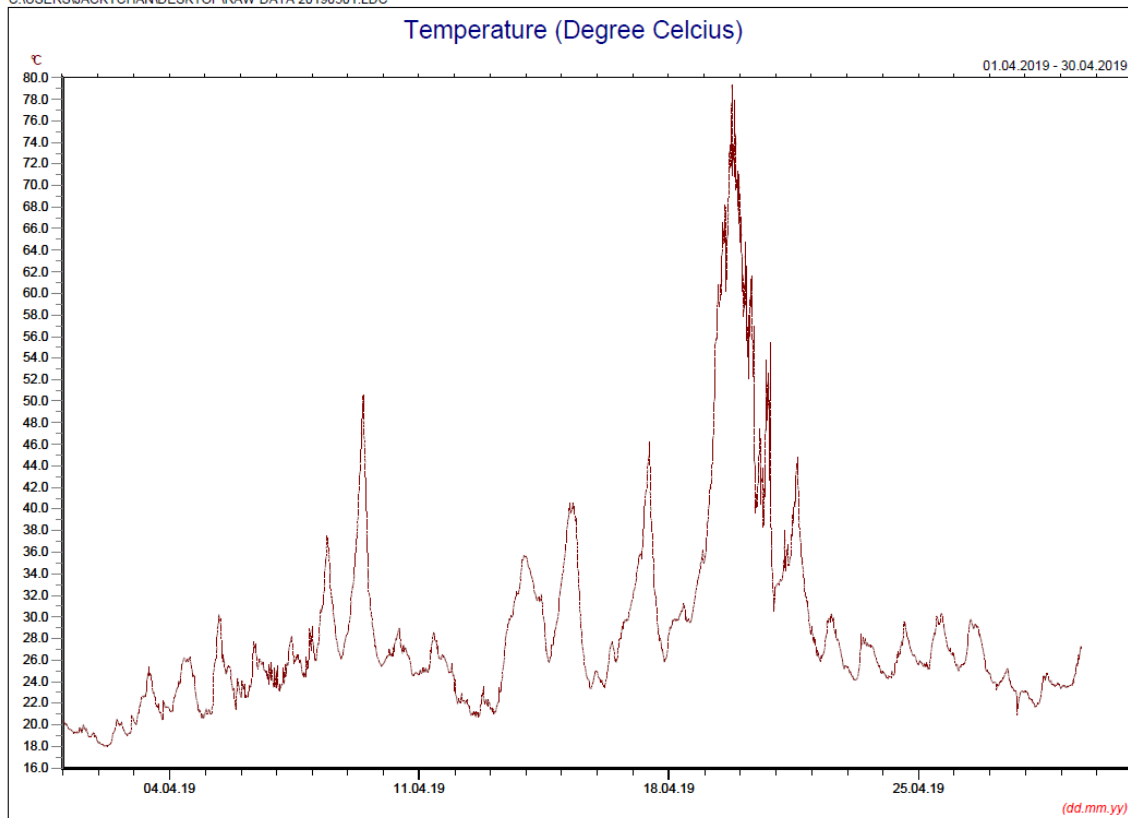
### Manual Rain Gauge Readings

March 2019

Date	Rainfall (mm)
1 Mar 19	0.0
2 Mar 19	0.0
3 Mar 19	1.7
4 Mar 19	56.5
5 Mar 19	0.8
6 Mar 19	24.8
7 Mar 19	30.0
8 Mar 19	8.2
9 Mar 19	16.0
10 Mar 19	17.0
11 Mar 19	0.4
12 Mar 19	0.2
13 Mar 19	4.4
14 Mar 19	2.6
15 Mar 19	1.4
16 Mar 19	0.2
17 Mar 19	0.0
18 Mar 19	0.0
19 Mar 19	0.0
20 Mar 19	0.1
21 Mar 19	0.0
22 Mar 19	3.6
23 Mar 19	6.5
24 Mar 19	3.6
25 Mar 19	1.3
26 Mar 19	0.2
27 Mar 19	0.0
28 Mar 19	0.0
29 Mar 19	6.3
30 Mar 19	0.6
31 Mar 19	5.8
<b>TOTAL RAINFALL</b>	<b>192.2</b>

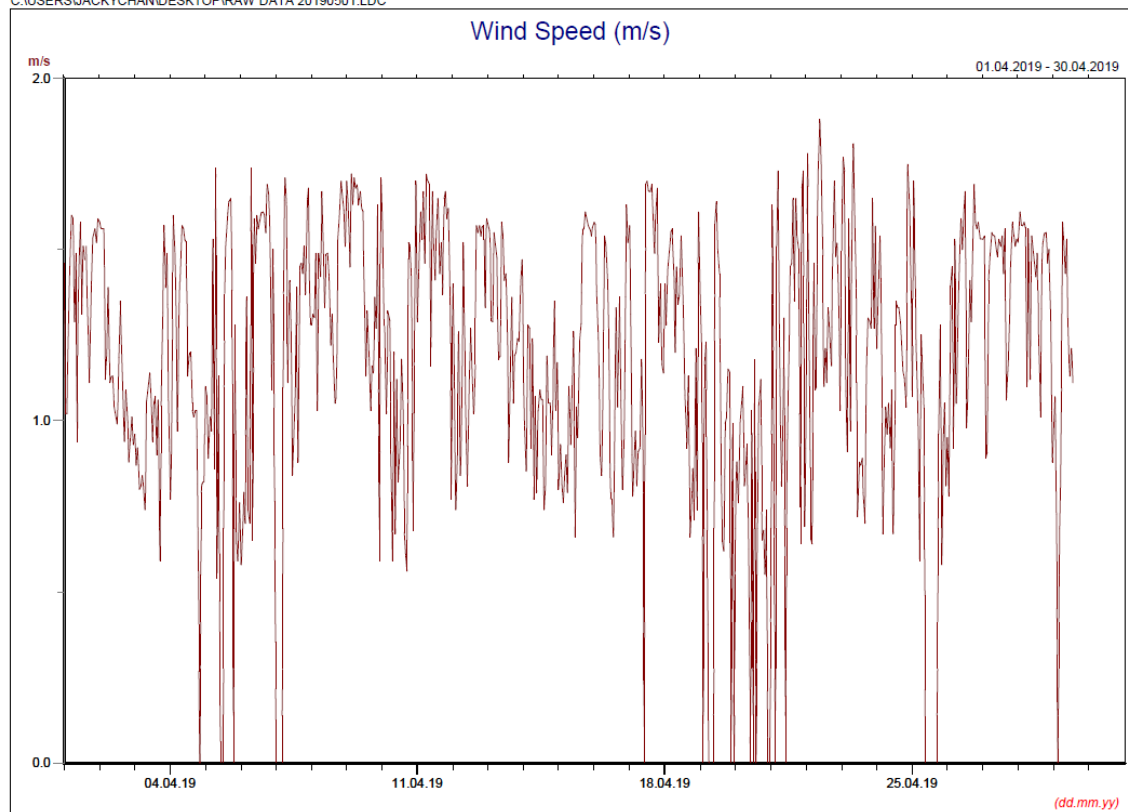
# April 2019

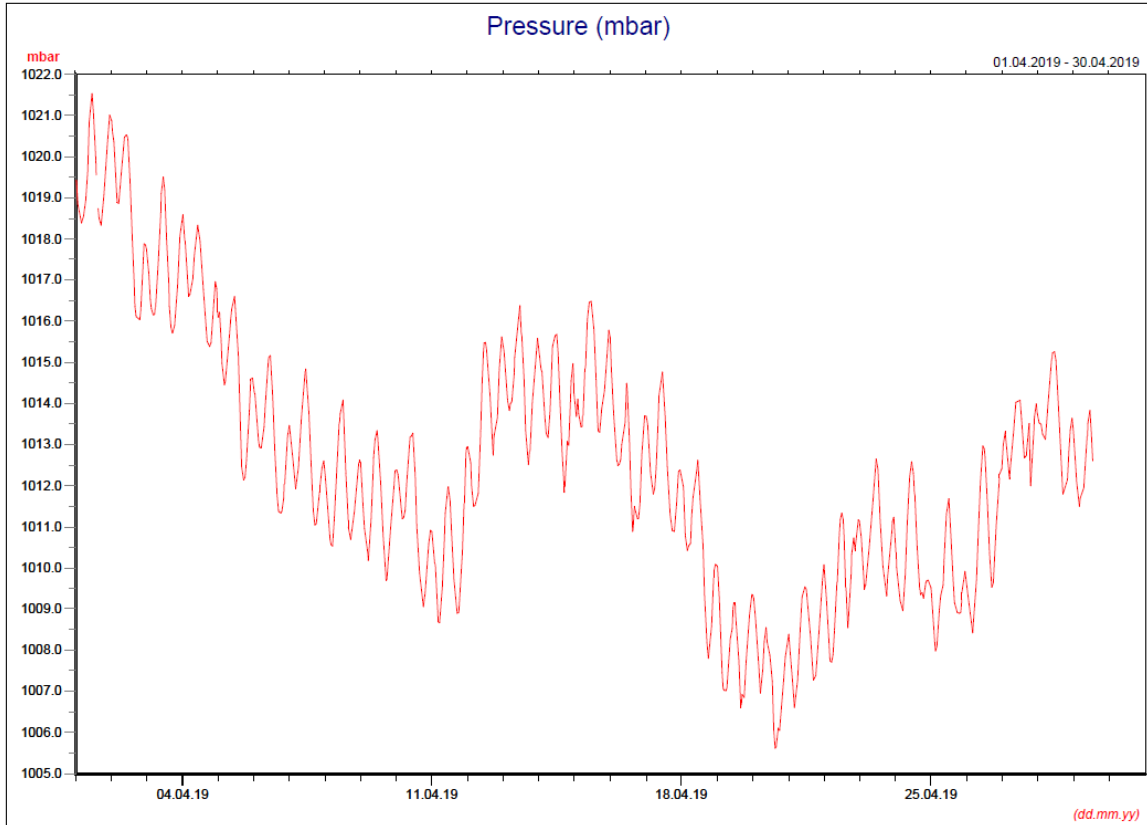
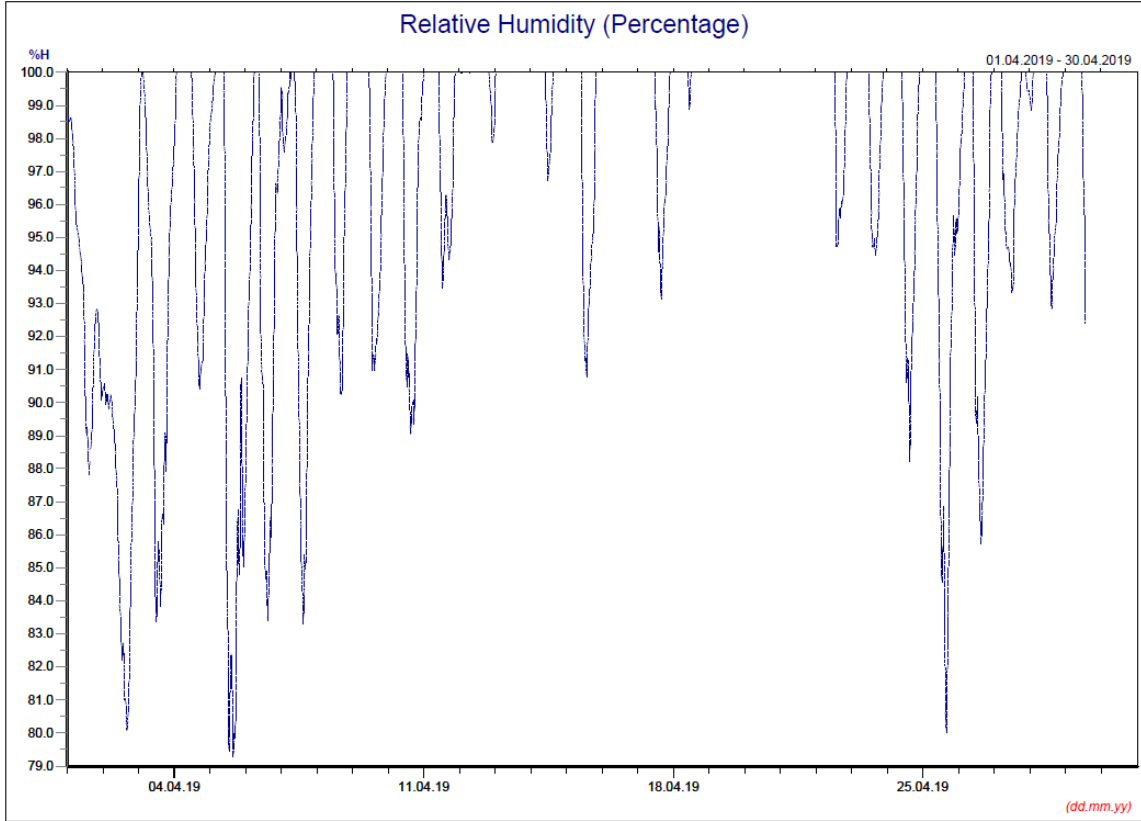
C:\USERS\JACKYCHAN\DESKTOP\PIRAW DATA 20190501.LDC

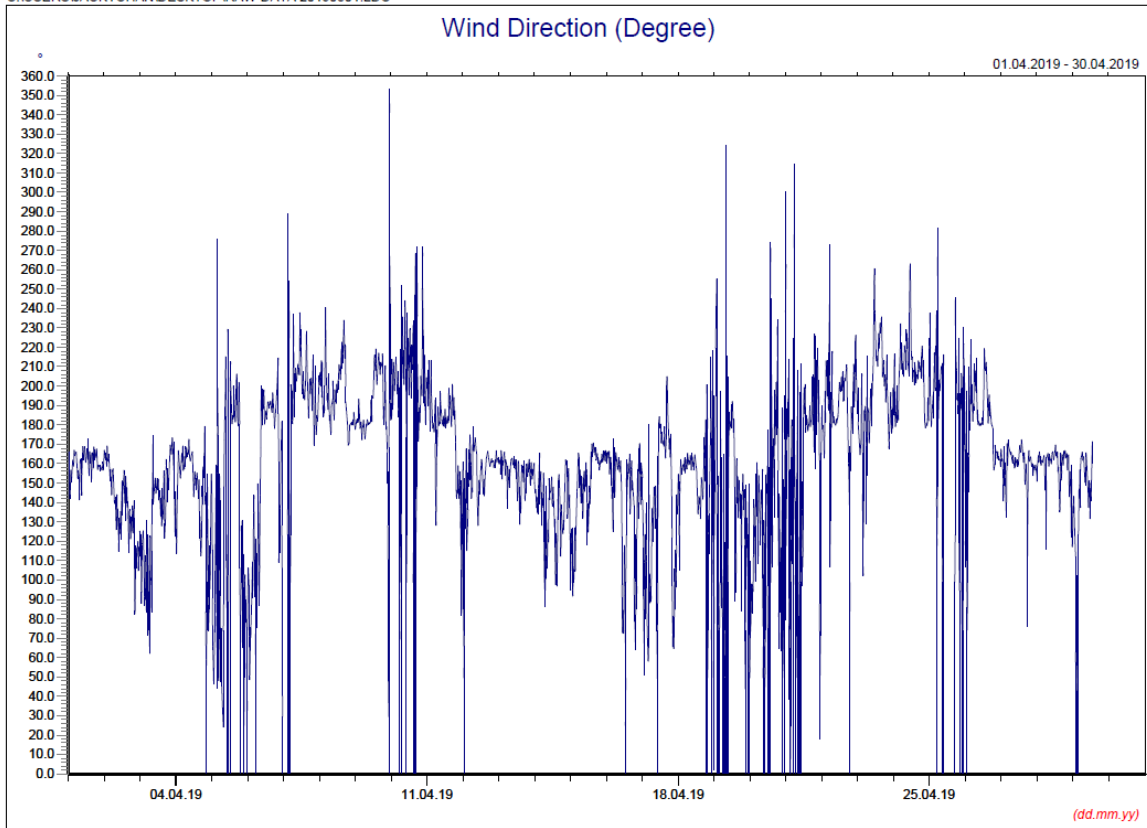


\* Note: Data on 20 April 2019 was discarded due to equipment failure.

C:\USERS\JACKYCHAN\DESKTOP\PIRAW DATA 20190501.LDC





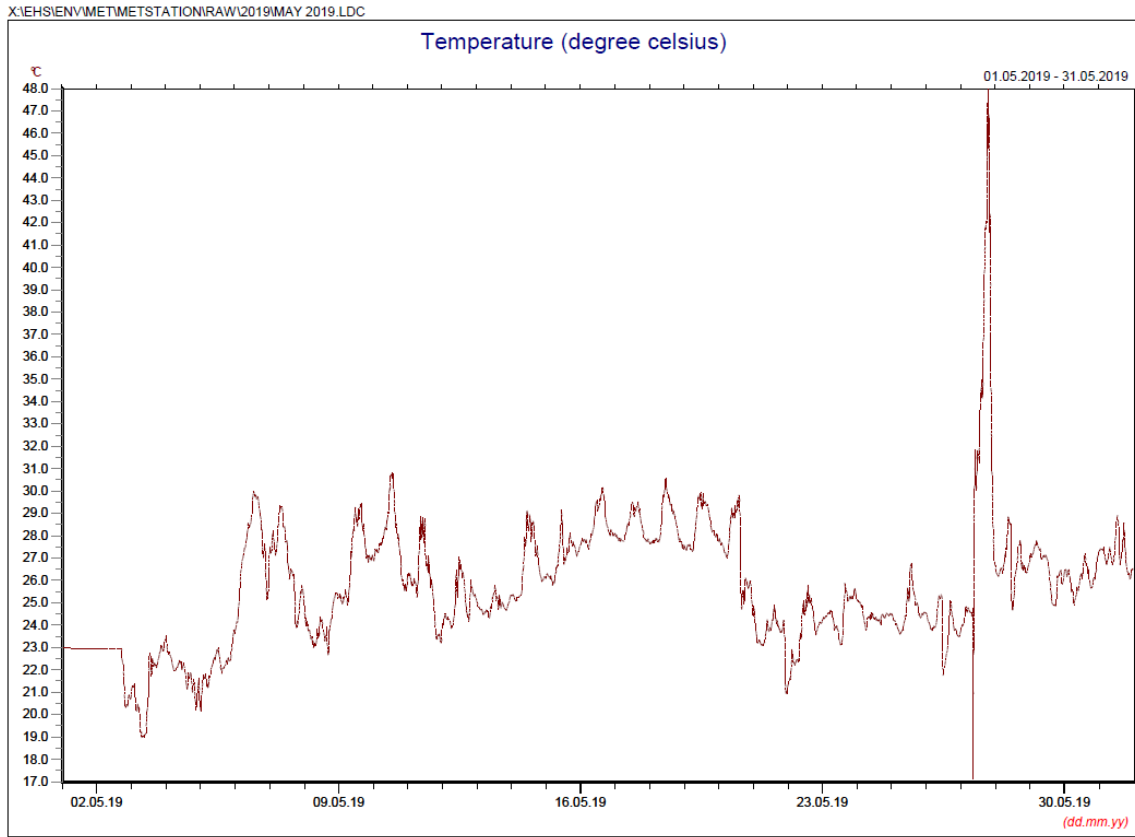


### Manual Rain Gauge Readings

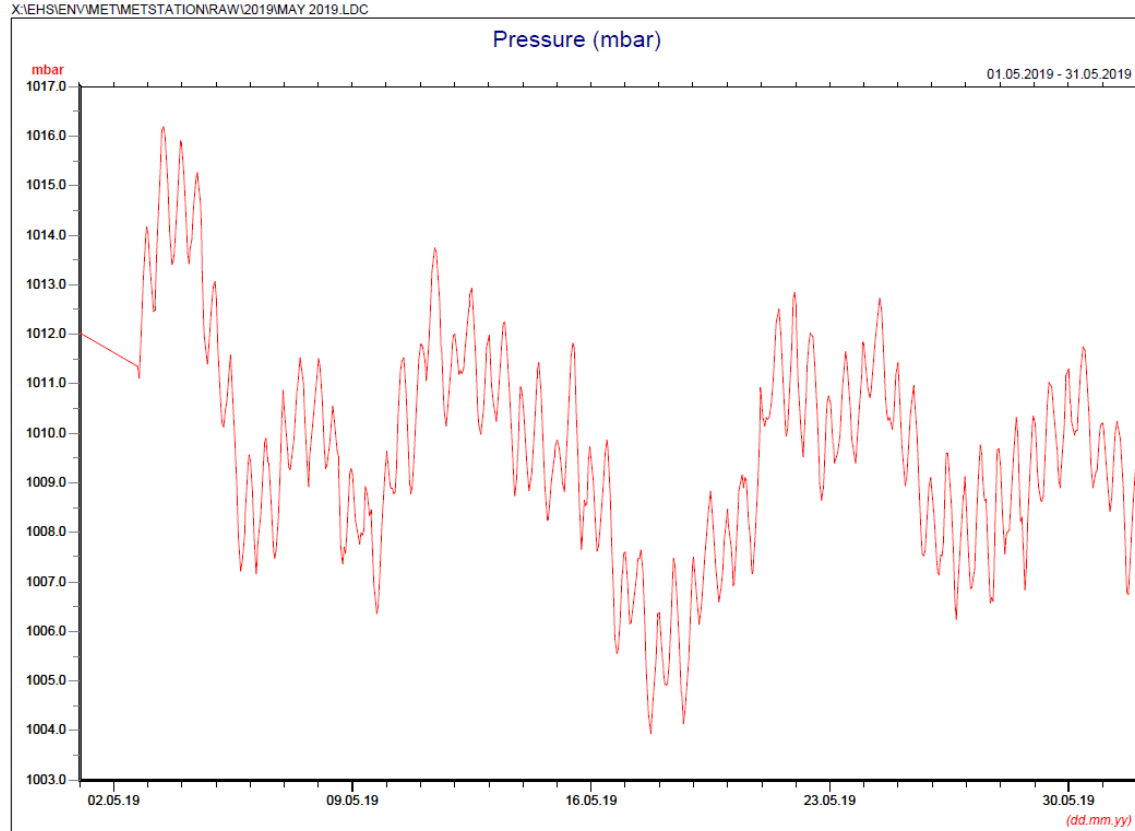
April 2019

Date	Rainfall (mm)
1 Apr 19	0.2
2 Apr 19	0.0
3 Apr 19	0.4
4 Apr 19	0.0
5 Apr 19	0.0
6 Apr 19	0.0
7 Apr 19	0.0
8 Apr 19	0.0
9 Apr 19	0.0
10 Apr 19	0.0
11 Apr 19	0.5
12 Apr 19	23.8
13 Apr 19	1.6
14 Apr 19	10.2
15 Apr 19	3.7
16 Apr 19	8.2
17 Apr 19	0.2
18 Apr 19	23.4
19 Apr 19	95.4
20 Apr 19	28.9
21 Apr 19	0.3
22 Apr 19	0.0
23 Apr 19	0.0
24 Apr 19	0.0
25 Apr 19	0.0
26 Apr 19	0.1
27 Apr 19	15.2
28 Apr 19	0.1
29 Apr 19	0.0
30 Apr 19	13.9
<b>TOTAL RAINFALL</b>	<b>226.1</b>

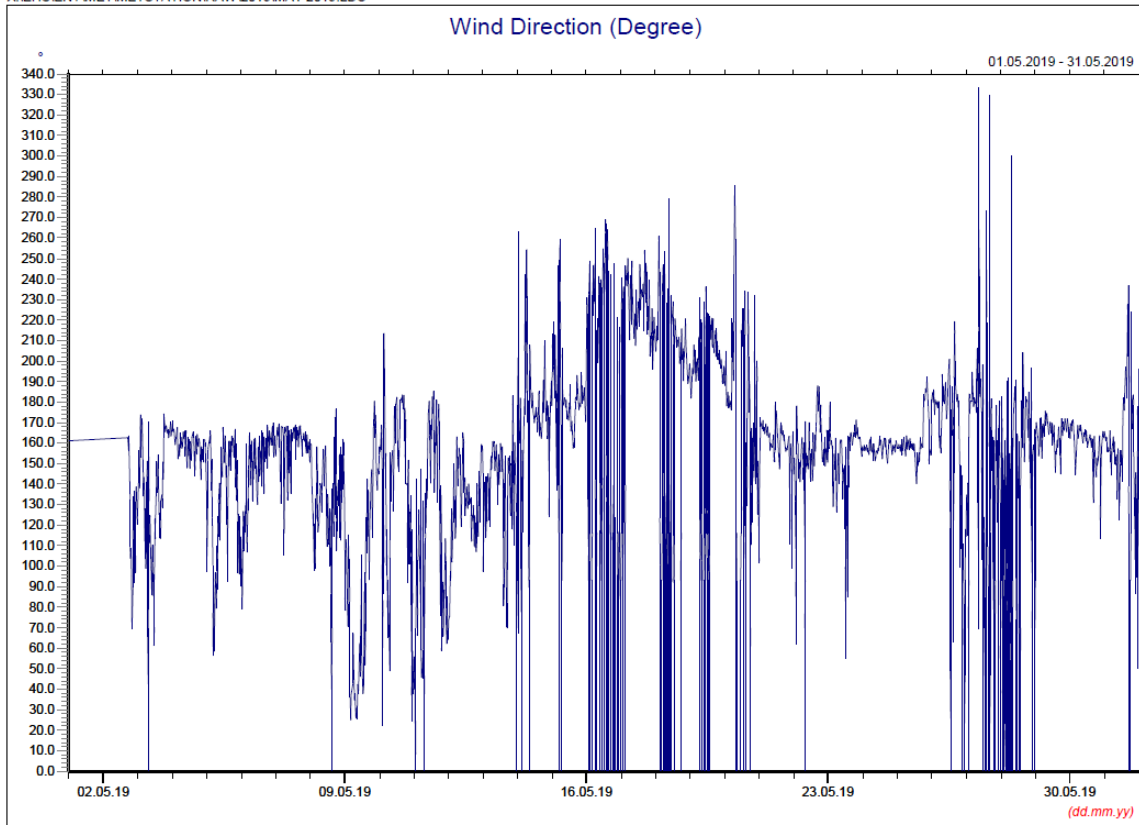
May 2019



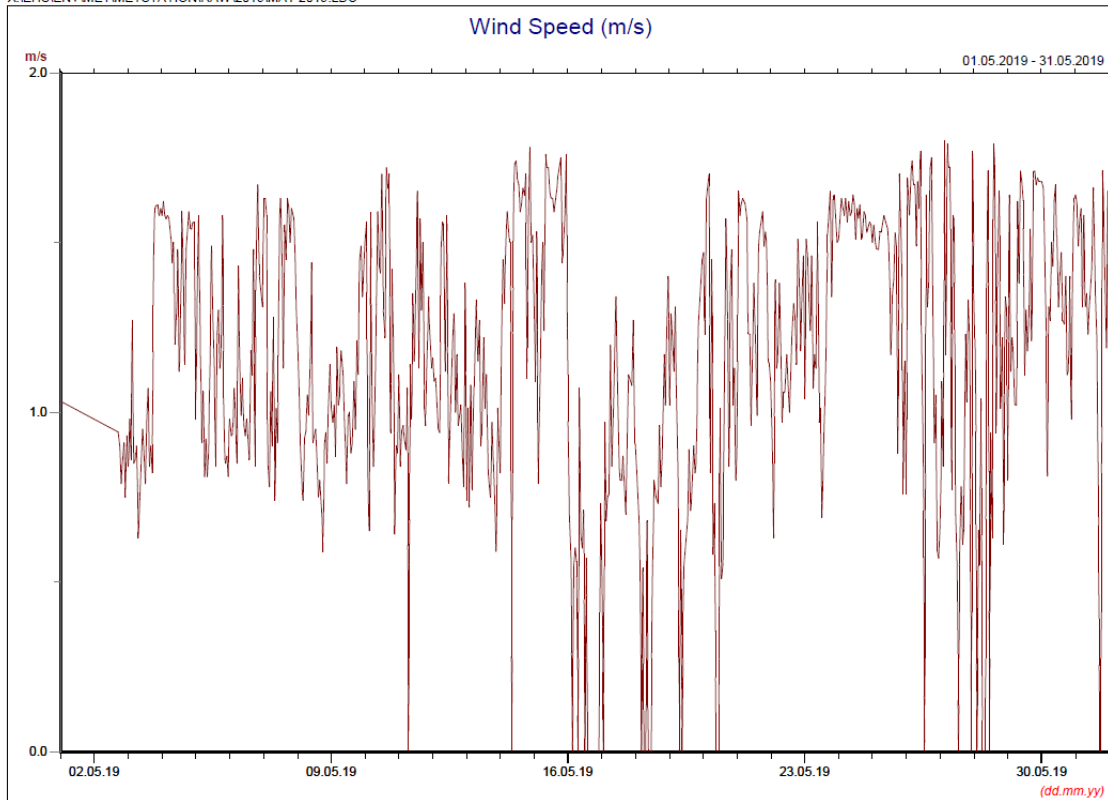
\* Note: Data from 1 May 00:00 to 2 May 2019 17:00 was lost due to malfunction of the meteorological station. Data on 27 May 2019 was discarded due to equipment failure.



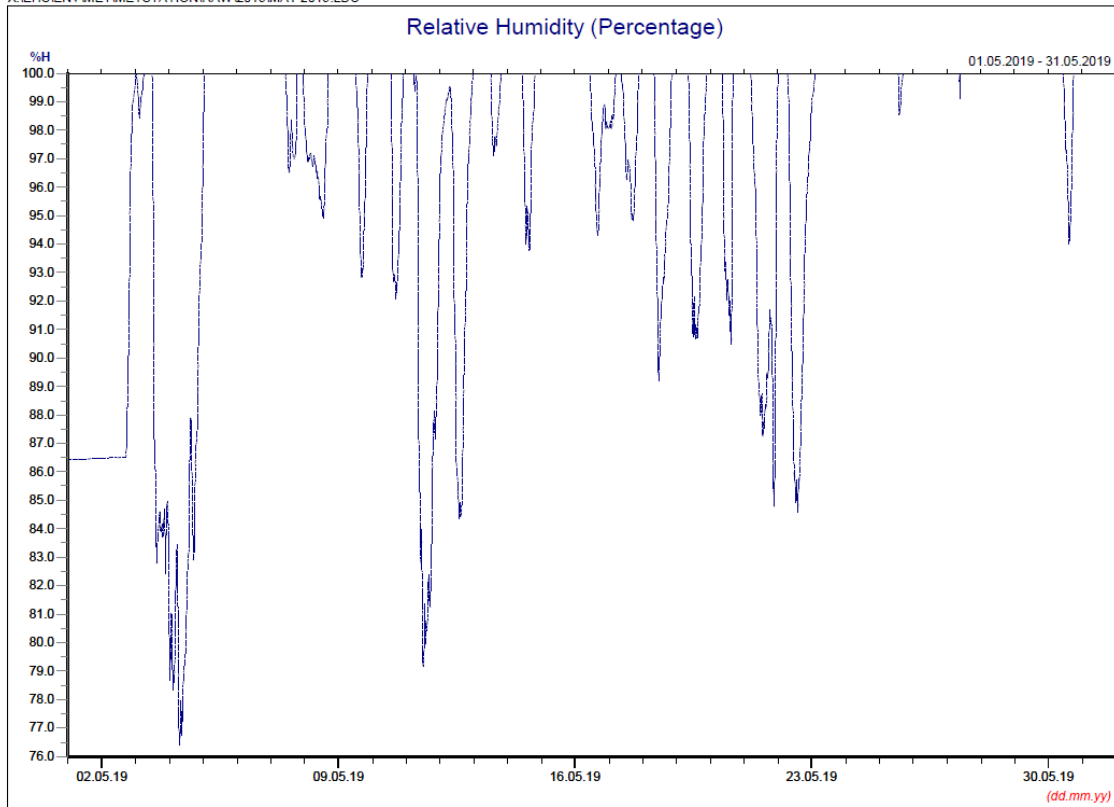
\* Note: Data from 1 May 00:00 to 2 May 2019 17:00 was lost due to malfunction of the meteorological station.



\* Note: Data from 1 May 00:00 to 2 May 2019 17:00 was lost due to malfunction of the meteorological station.



\* Note: Data from 1 May 00:00 to 2 May 2019 17:00 was lost due to malfunction of the meteorological station.



\* Note: Data from 1 May 00:00 to 2 May 2019 17:00 was lost due to malfunction of the meteorological station.

### Manual Rain Gauge Readings

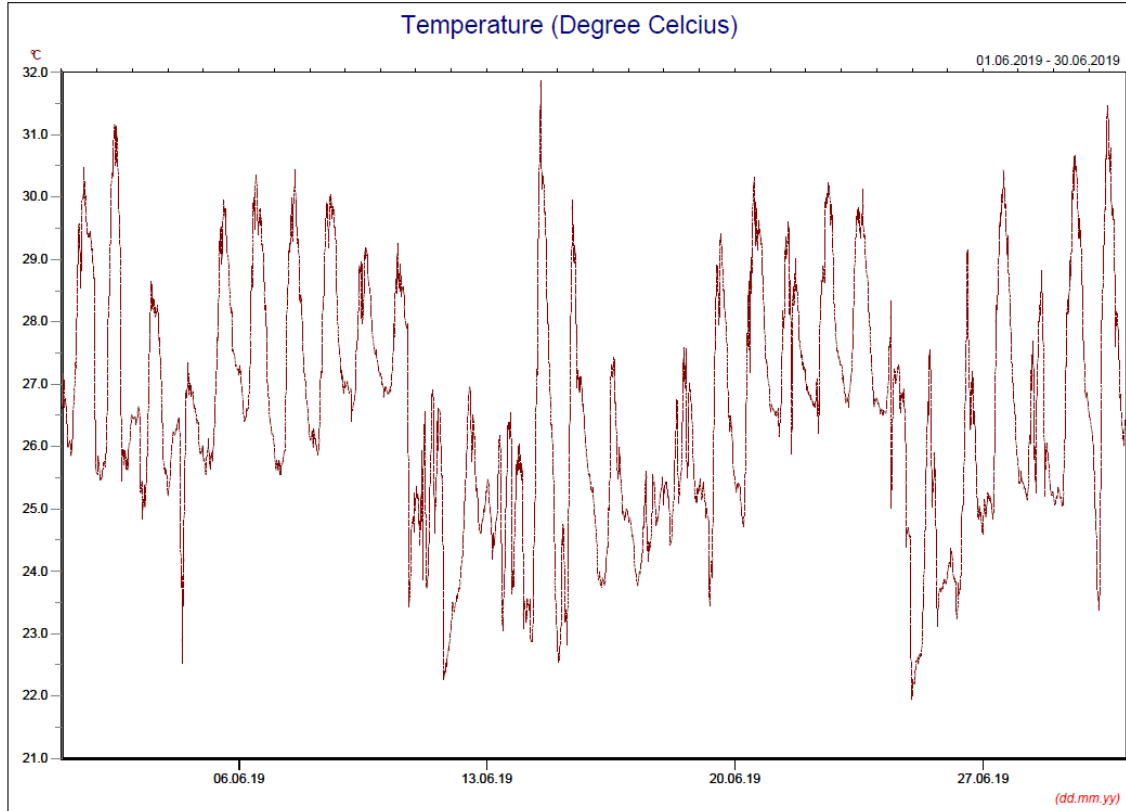
May 2019

Date	Rainfall (mm)
1 May 19	2.8
2 May 19	9.5
3 May 19	0.1
4 May 19	34.4
5 May 19	14.0
6 May 19	21.7
7 May 19	23.7
8 May 19	37.0
9 May 19	0.1
10 May 19	0.0
11 May 19	0.0
12 May 19	0.4
13 May 19	0.1
14 May 19	0.0
15 May 19	0.0
16 May 19	0.0
17 May 19	0.0
18 May 19	0.0
19 May 19	0.0
20 May 19	20.2
21 May 19	15.1
22 May 19	2.0
23 May 19	51.0
24 May 19	0.8
25 May 19	6.2
26 May 19	19.2
27 May 19	18.6
28 May 19	34.7
29 May 19	26.6
30 May 19	3.0
31 May 19	47.4
<b>TOTAL RAINFALL</b>	<b>388.6</b>

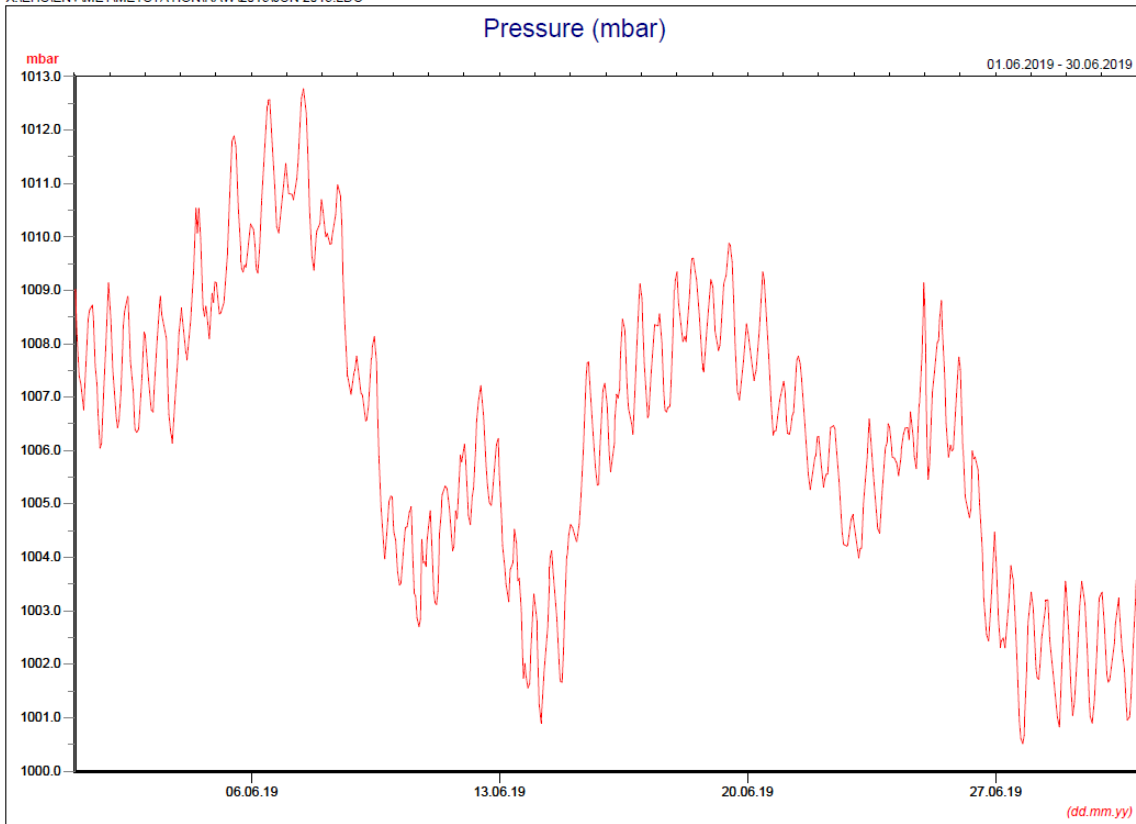


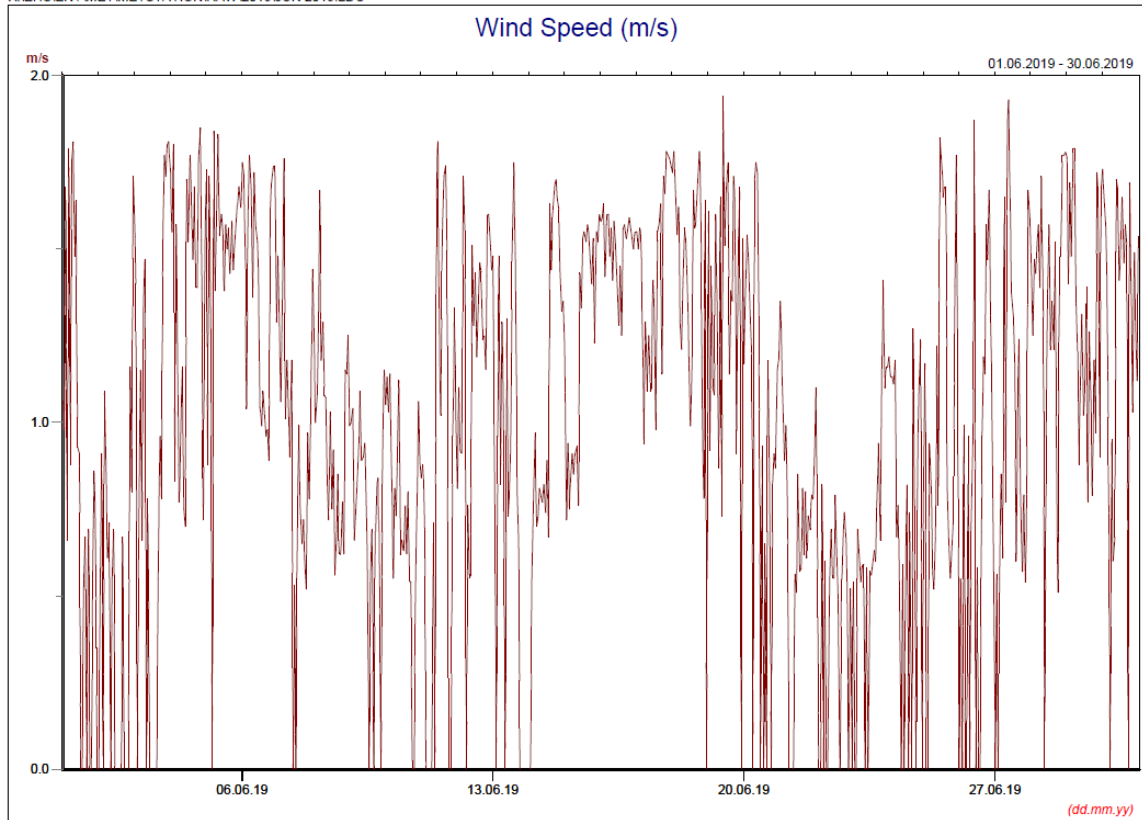
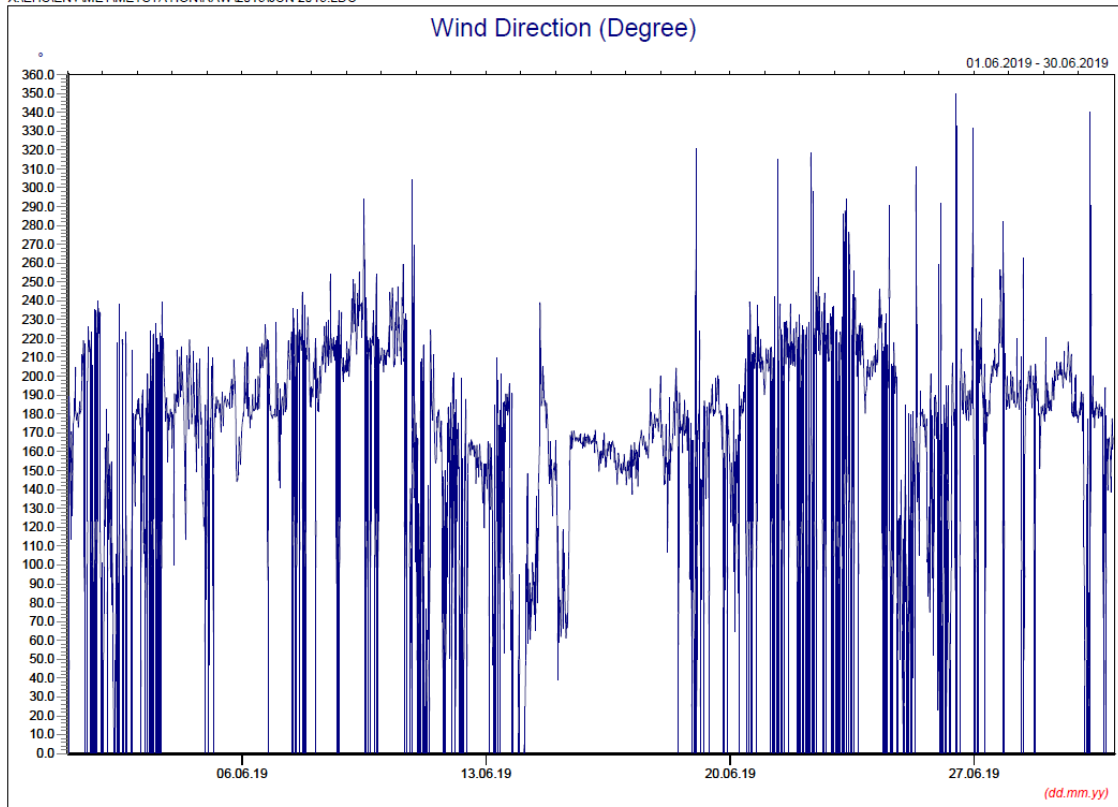
June 2019

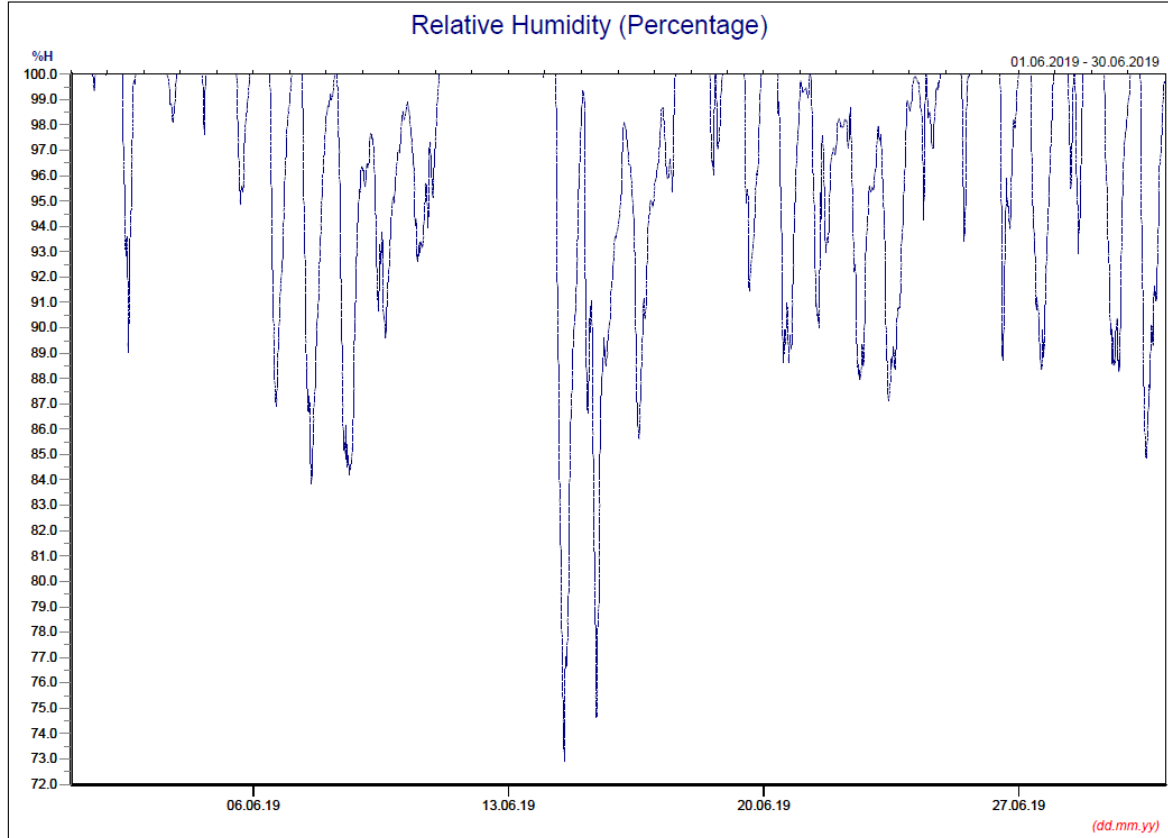
X:\EHS\ENV\MET\METSTATION\RAW\2019\JUN 2019.LDC



X:\EHS\ENV\MET\METSTATION\RAW\2019\JUN 2019.LDC



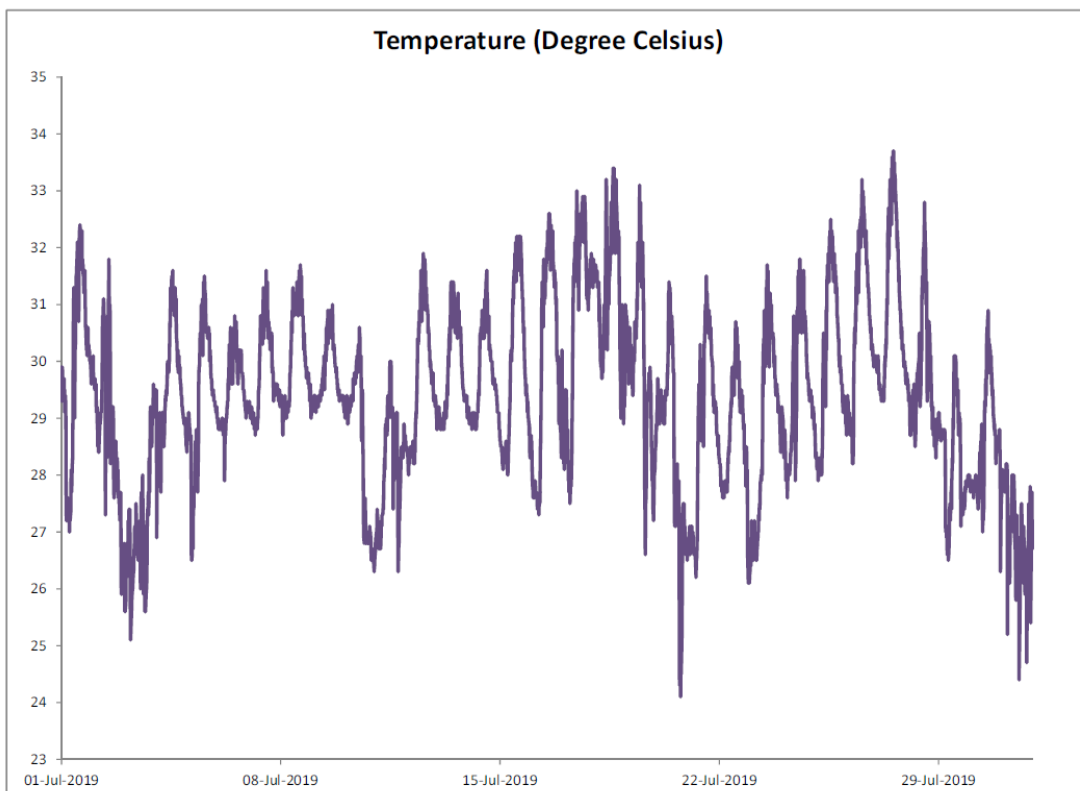
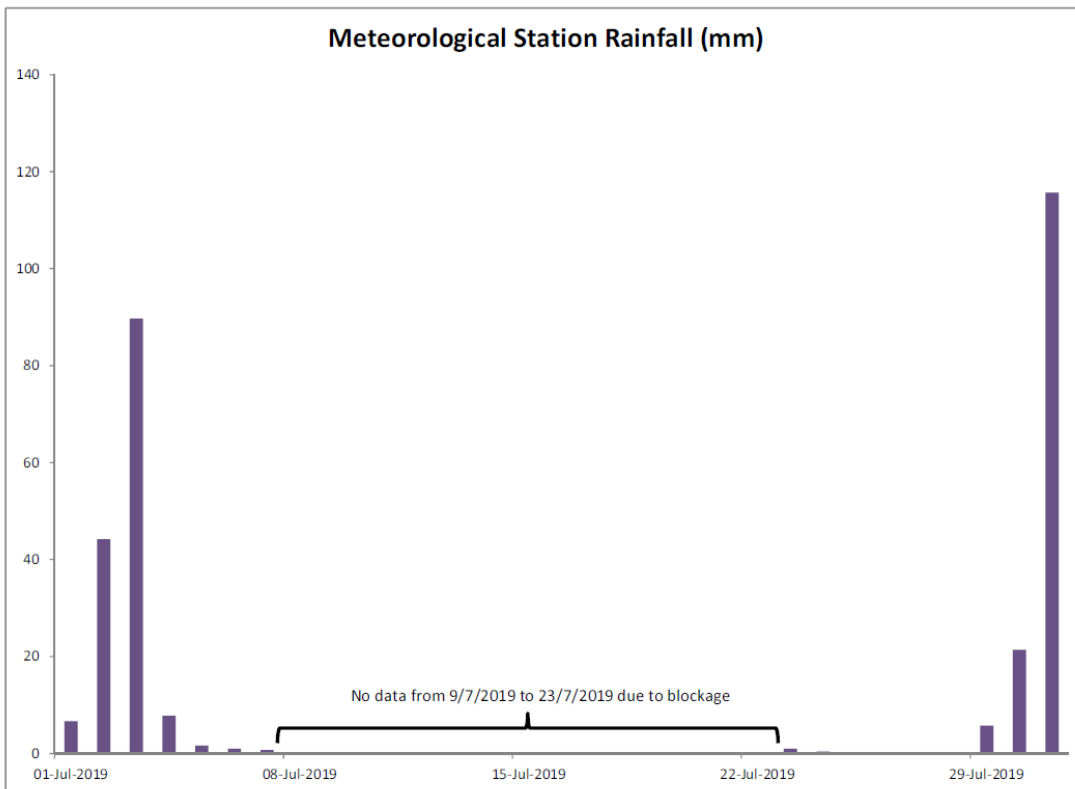


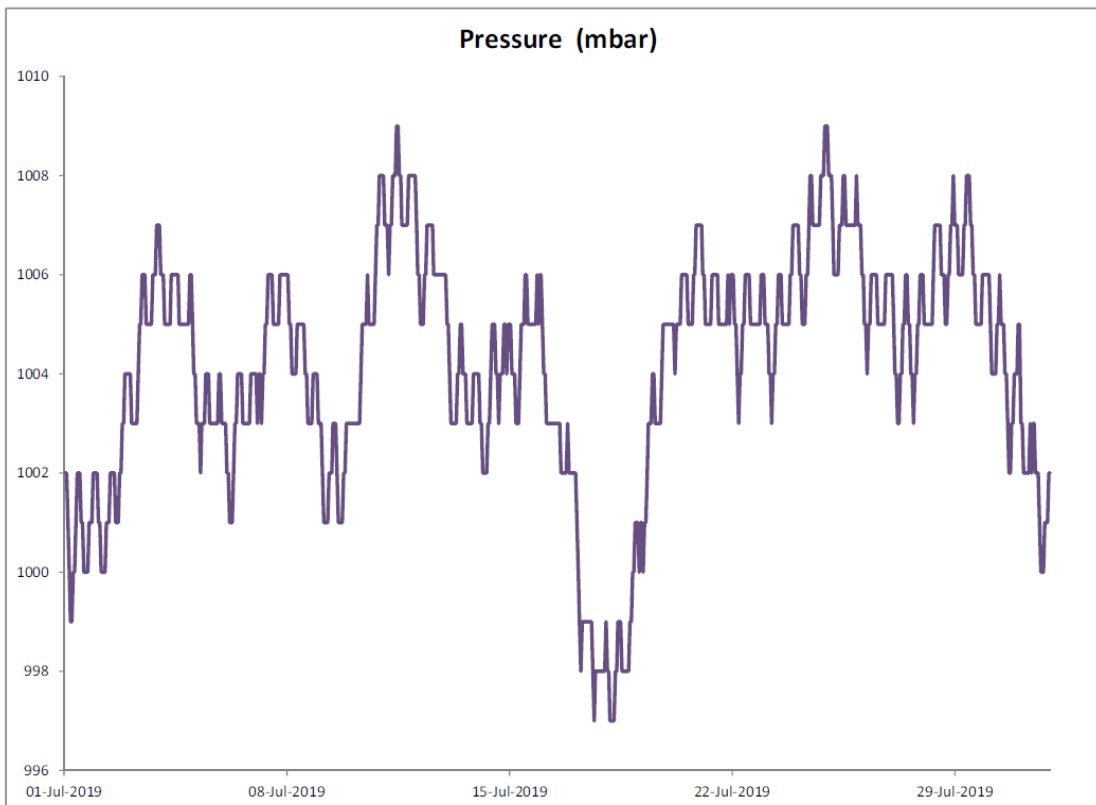
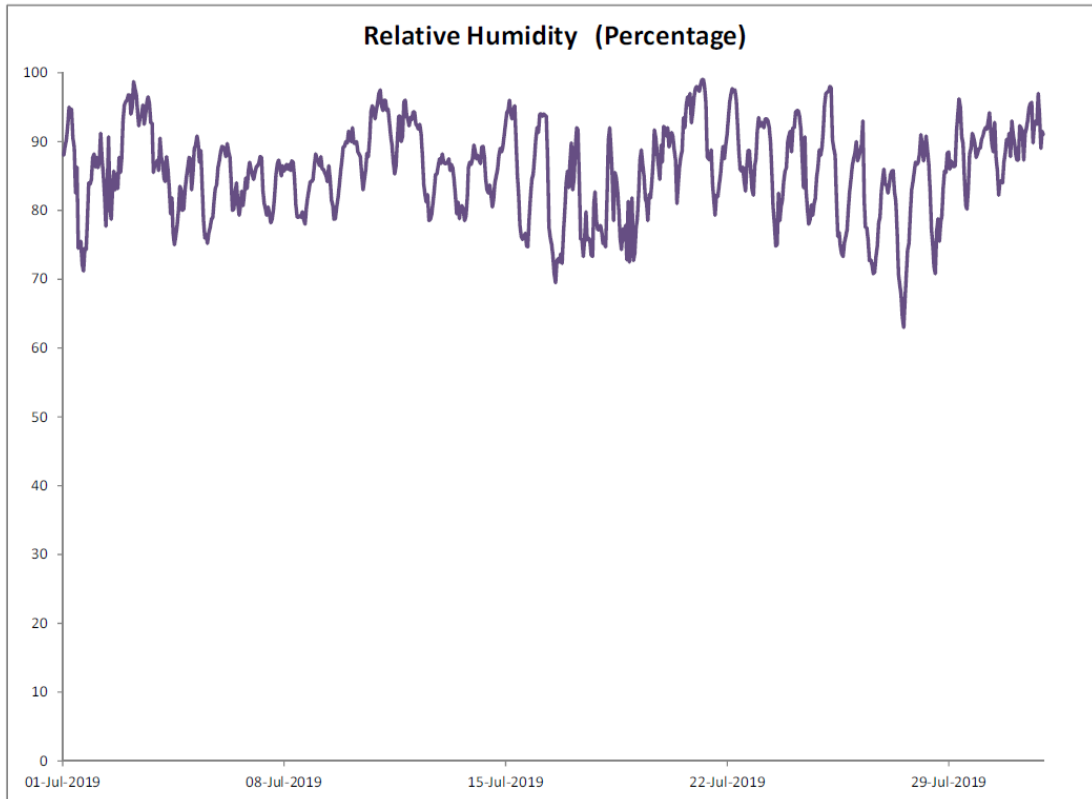


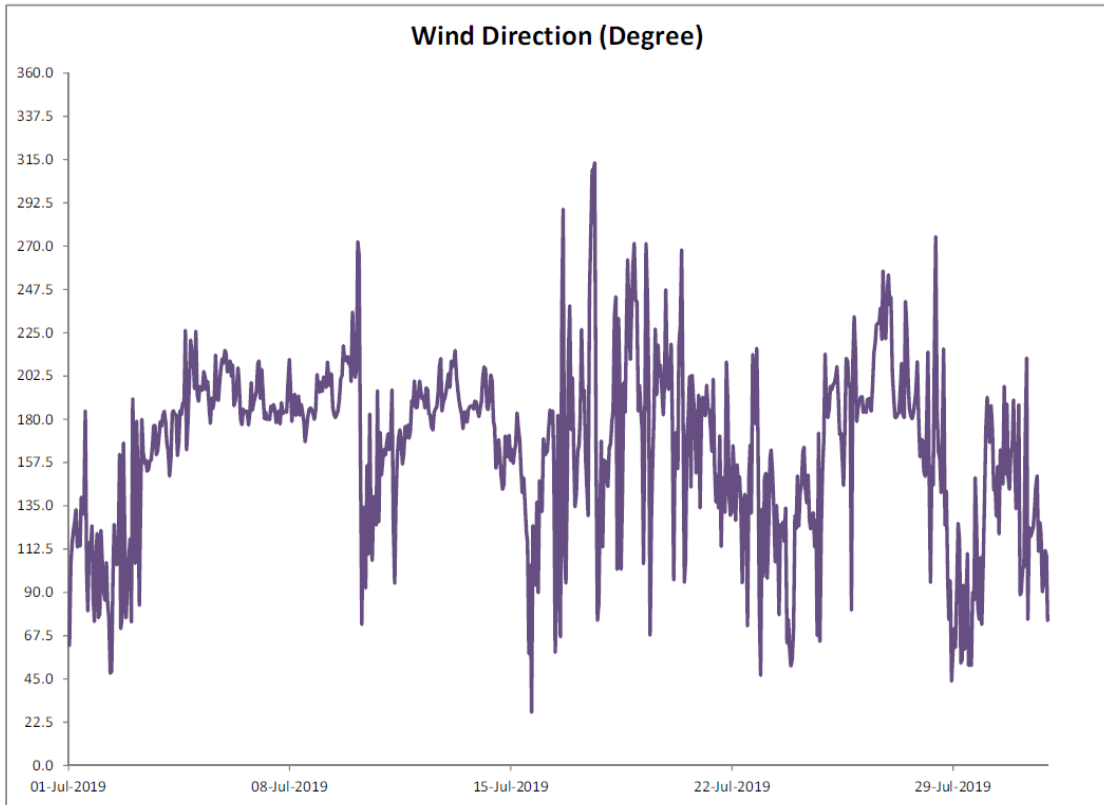
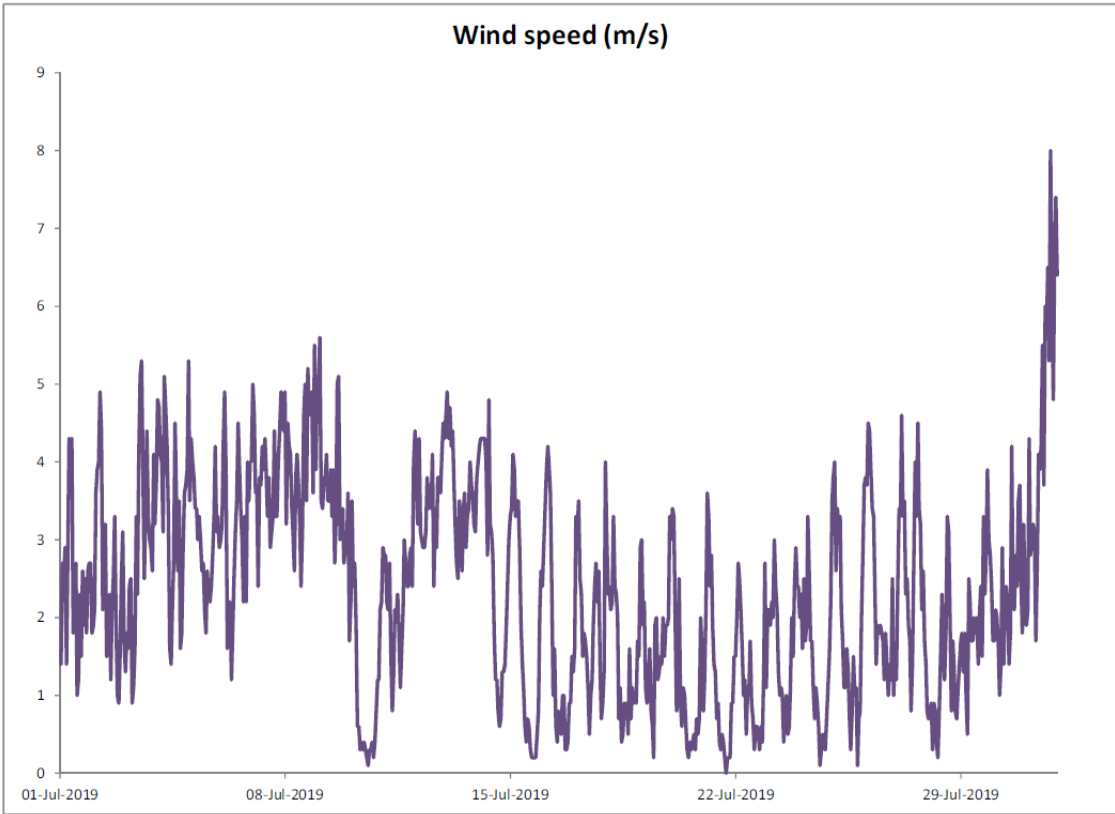
### Manual Rain Gauge Readings

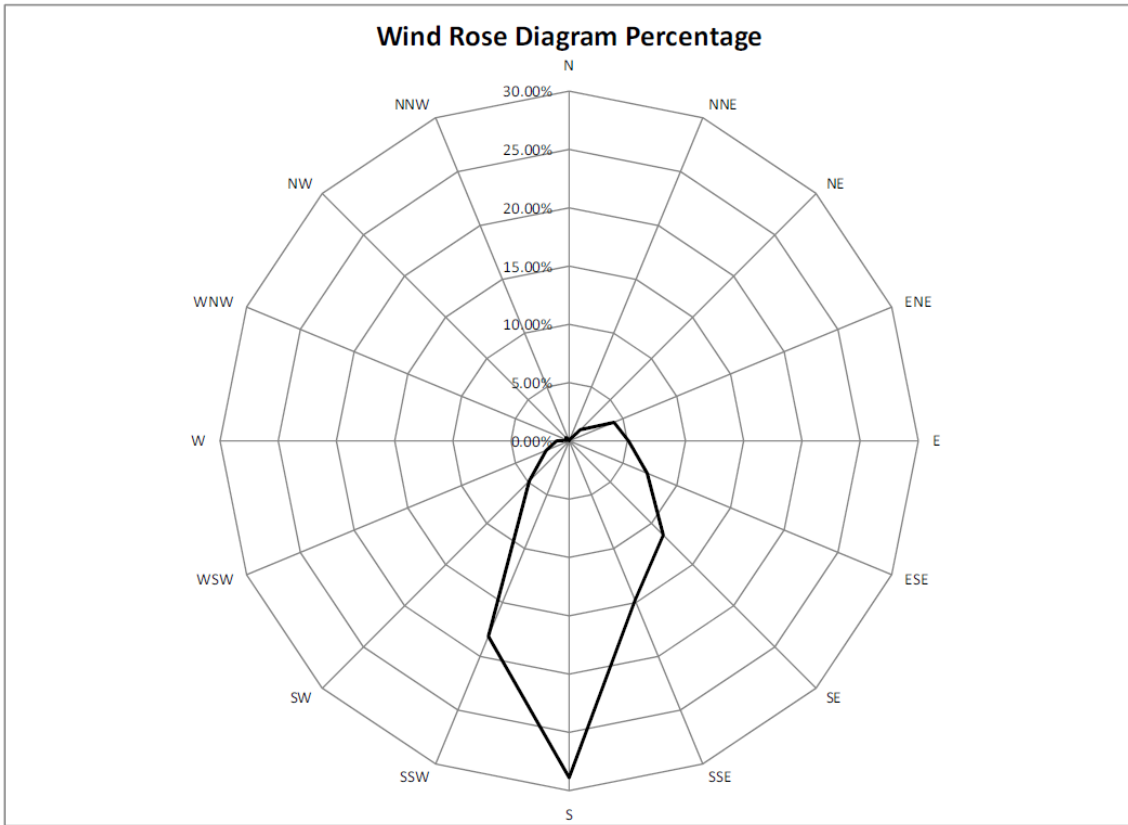
June 2019

Date	Rainfall (mm)
1 Jun 19	6.0
2 Jun 19	27.0
3 Jun 19	13.0
4 Jun 19	142.0
5 Jun 19	0.2
6 Jun 19	2.0
7 Jun 19	0.0
8 Jun 19	1.0
9 Jun 19	1.2
10 Jun 19	73.0
11 Jun 19	17.2
12 Jun 19	6.5
13 Jun 19	68.4
14 Jun 19	0.2
15 Jun 19	0.0
16 Jun 19	0.0
17 Jun 19	6.8
18 Jun 19	18.8
19 Jun 19	1.4
20 Jun 19	2.4
21 Jun 19	8.8
22 Jun 19	2.4
23 Jun 19	0.0
24 Jun 19	20.6
25 Jun 19	50.2
26 Jun 19	0.8
27 Jun 19	0.0
28 Jun 19	27.0
29 Jun 19	4.3
30 Jun 19	7.5
<b>TOTAL RAINFALL</b>	<b>508.7</b>







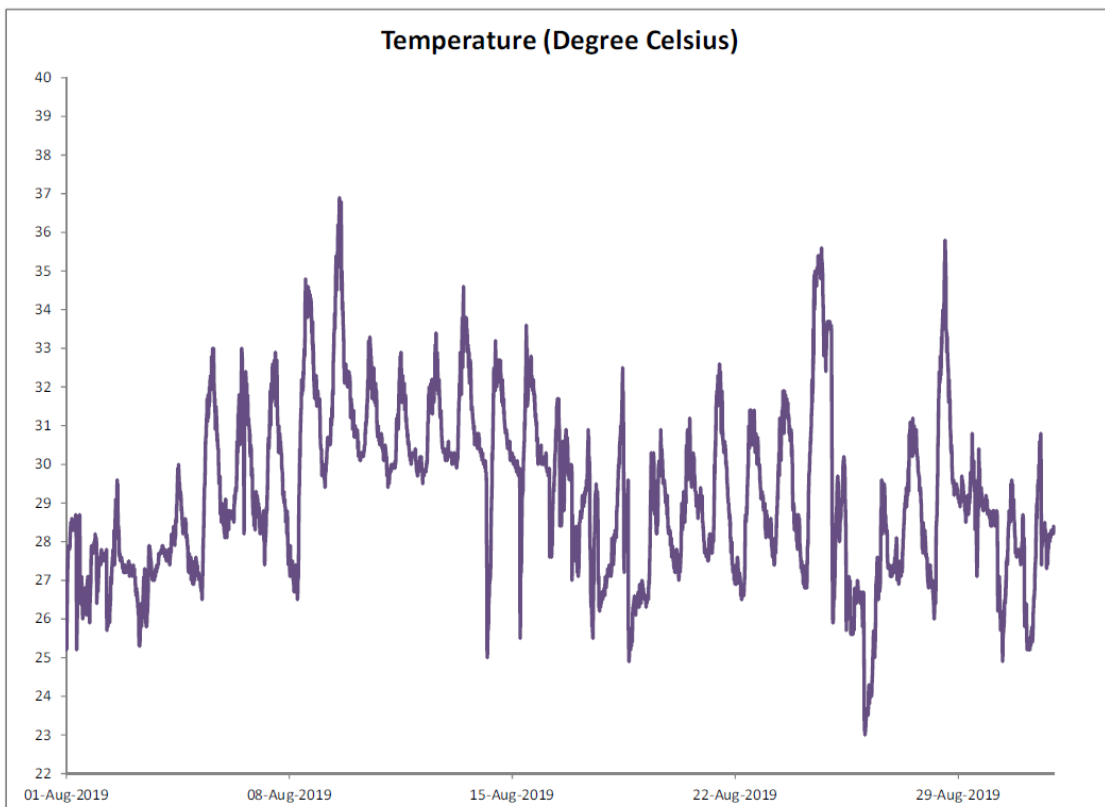
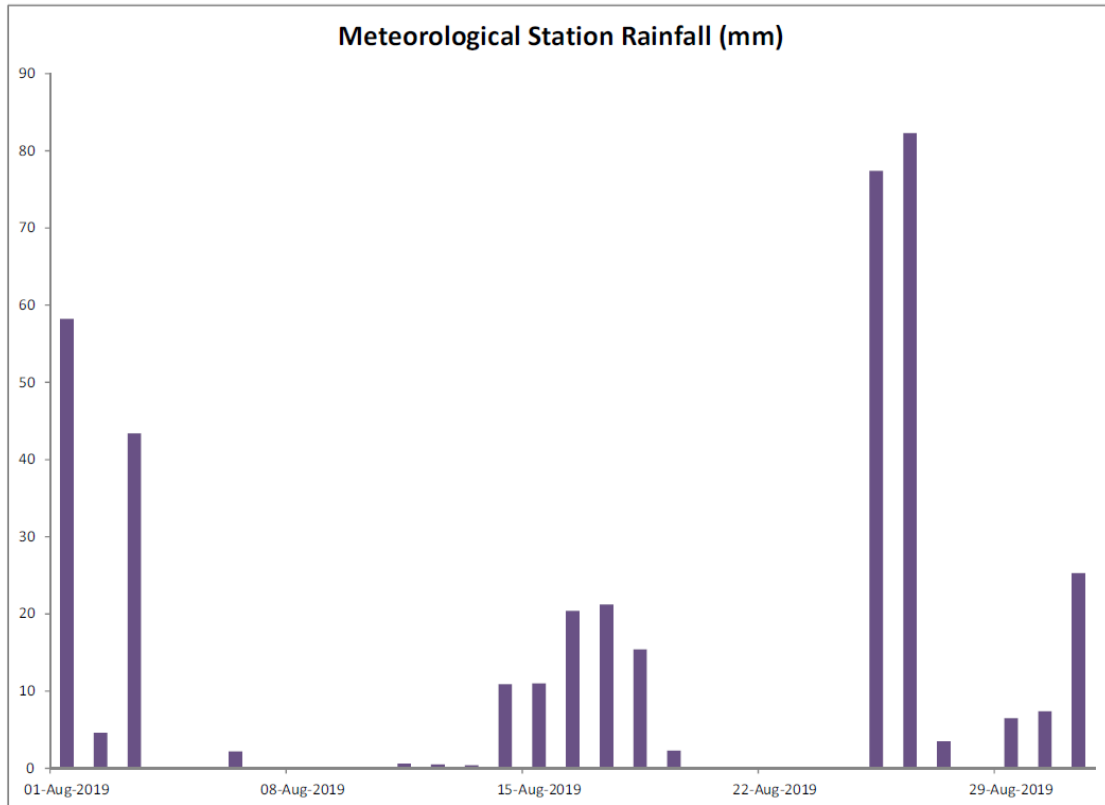


### Manual Rain Gauge Readings

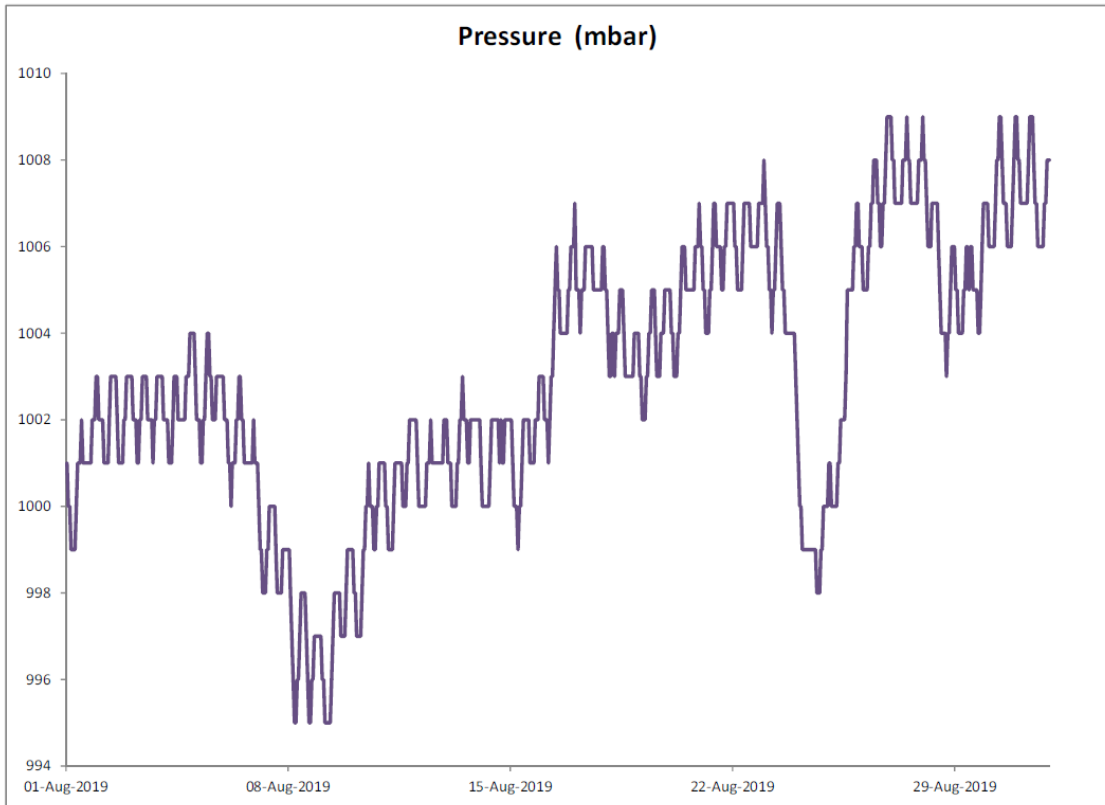
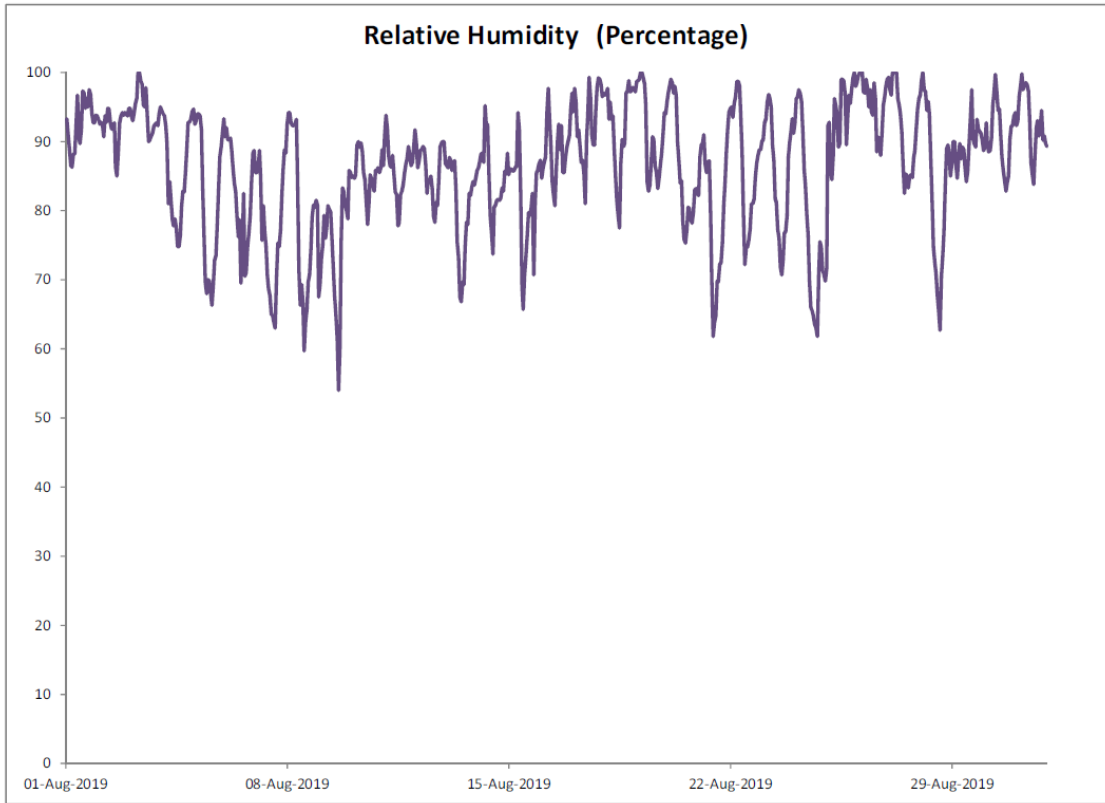
July 2019

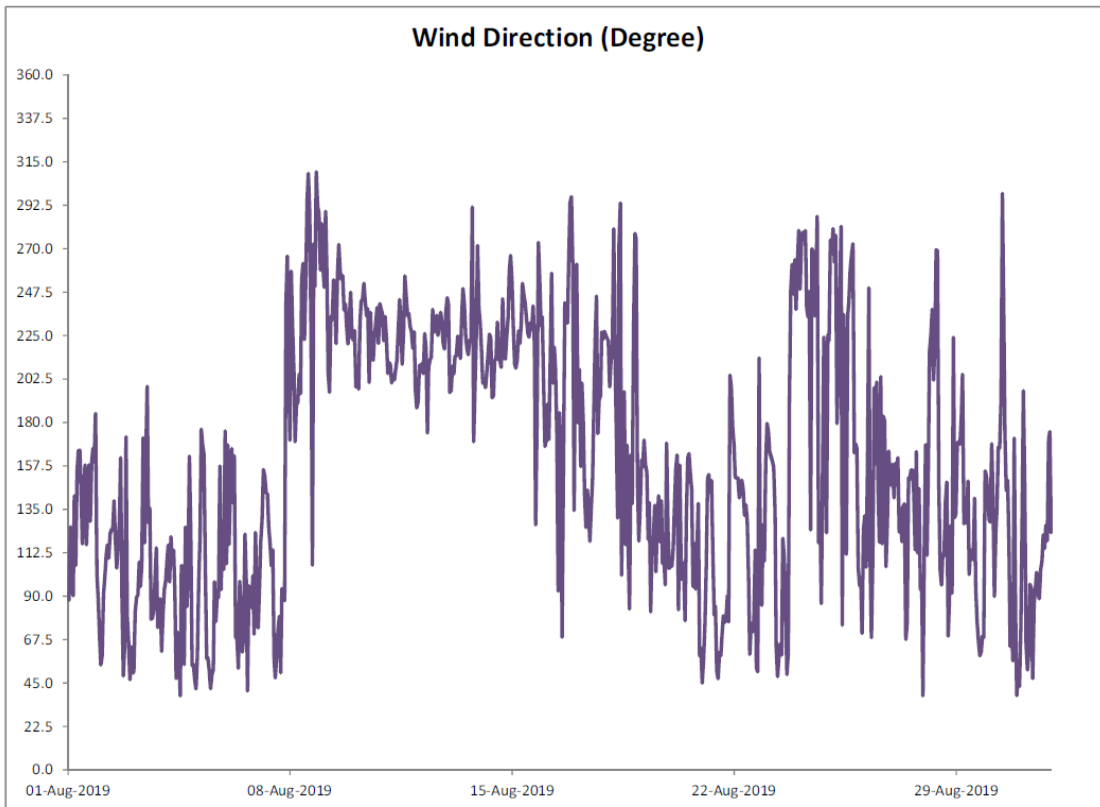
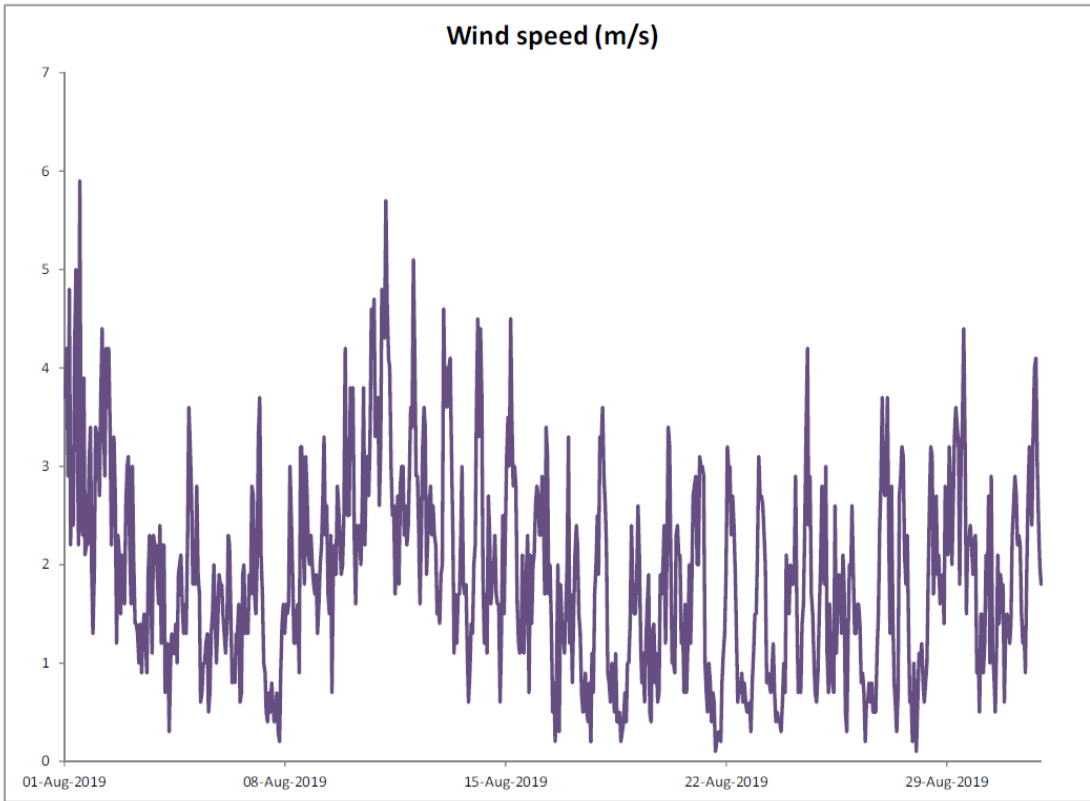
Date	Rainfall (mm)
1 Jul 19	1.6
2 Jul 19	105.2
3 Jul 19	69.4
4 Jul 19	2.6
5 Jul 19	4.0
6 Jul 19	1.1
7 Jul 19	0.4
8 Jul 19	0.0
9 Jul 19	4.8
10 Jul 19	6.2
11 Jul 19	19.0
12 Jul 19	0.0
13 Jul 19	0.3
14 Jul 19	0.2
15 Jul 19	0.0
16 Jul 19	0.0
17 Jul 19	0.0
18 Jul 19	0.0
19 Jul 19	2.8
20 Jul 19	24.0
21 Jul 19	0.6
22 Jul 19	0.4
23 Jul 19	0.0
24 Jul 19	1.4
25 Jul 19	0.4
26 Jul 19	0.0
27 Jul 19	0.0
28 Jul 19	6.2
29 Jul 19	3.8
30 Jul 19	31.6
31 Jul 19	153.4
<b>TOTAL RAINFALL</b>	<b>439.4</b>

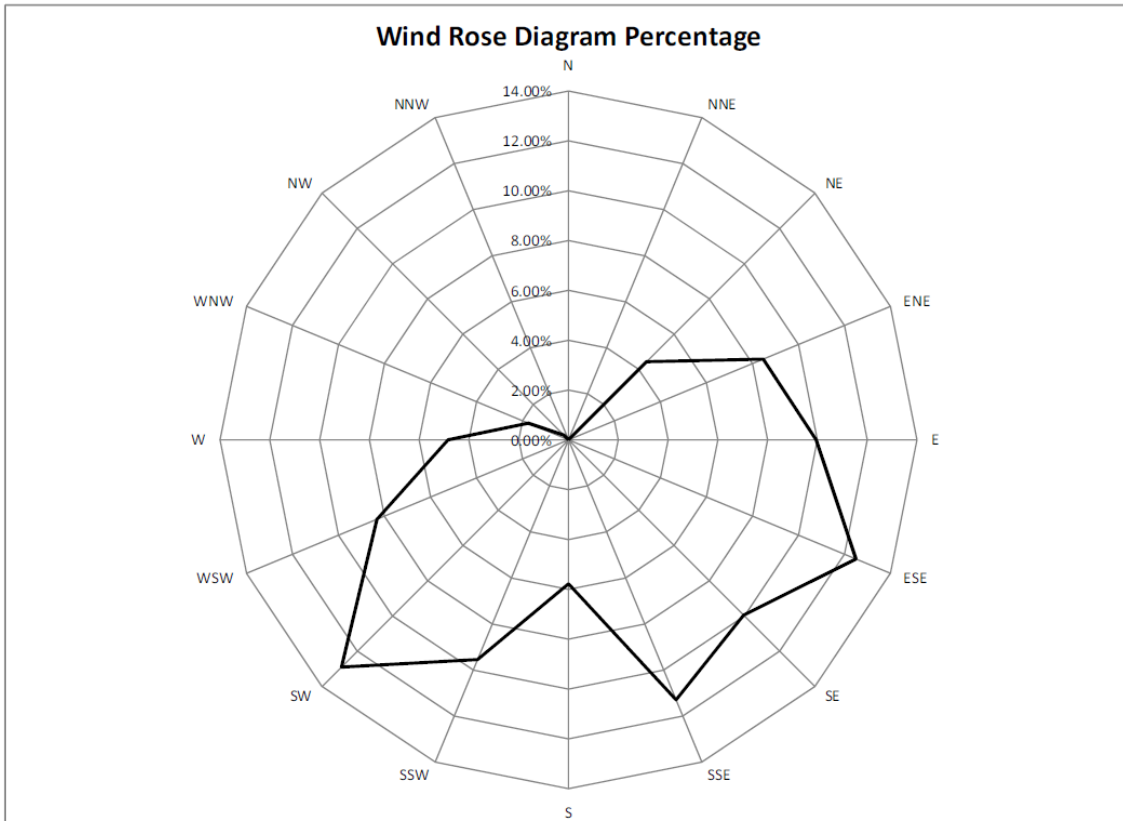
August 2019







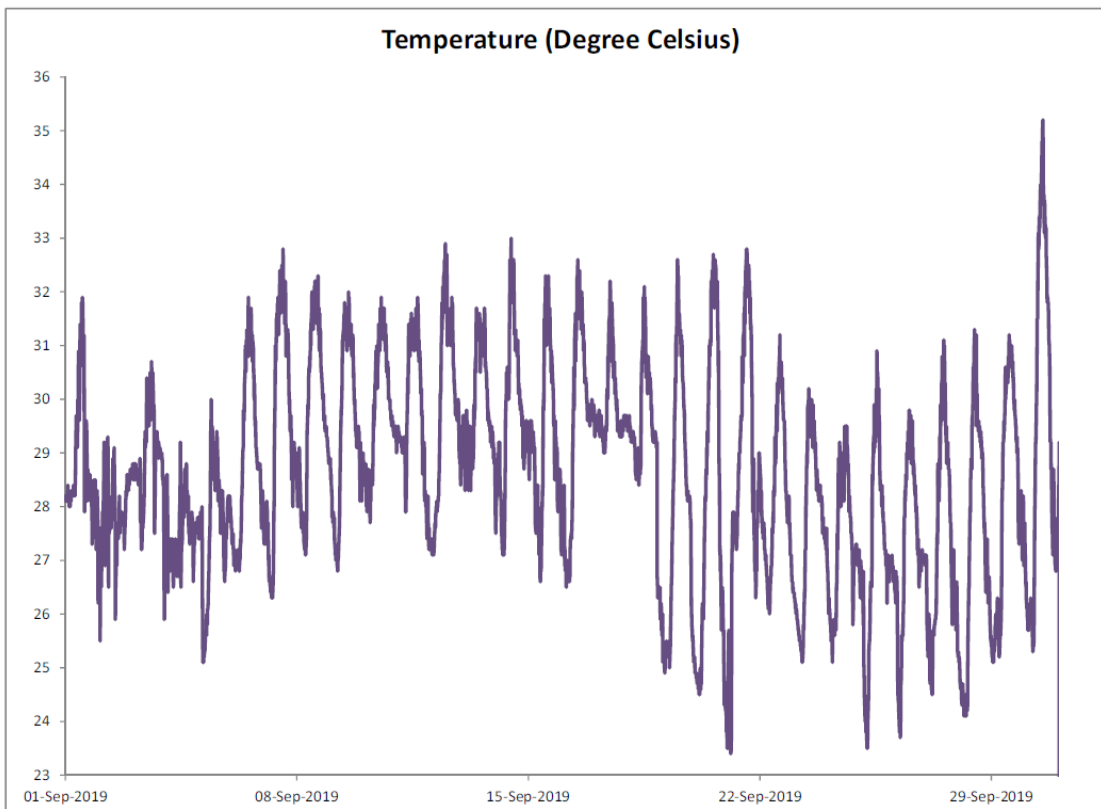
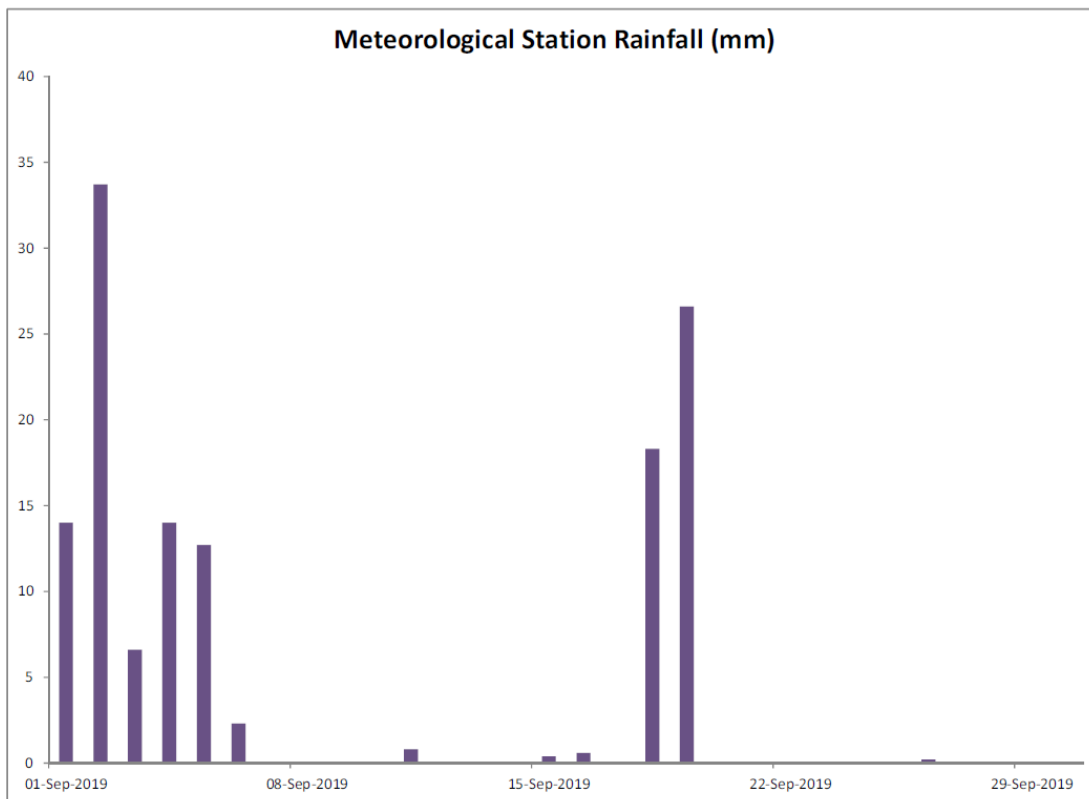


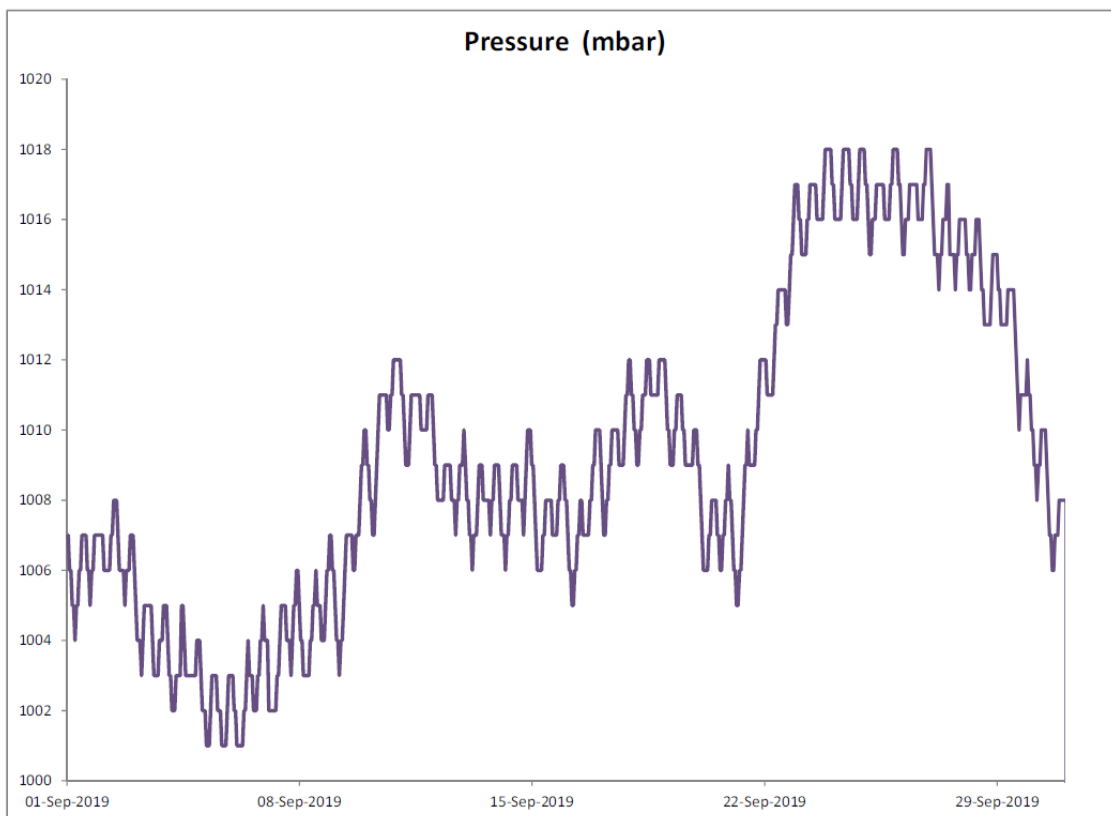
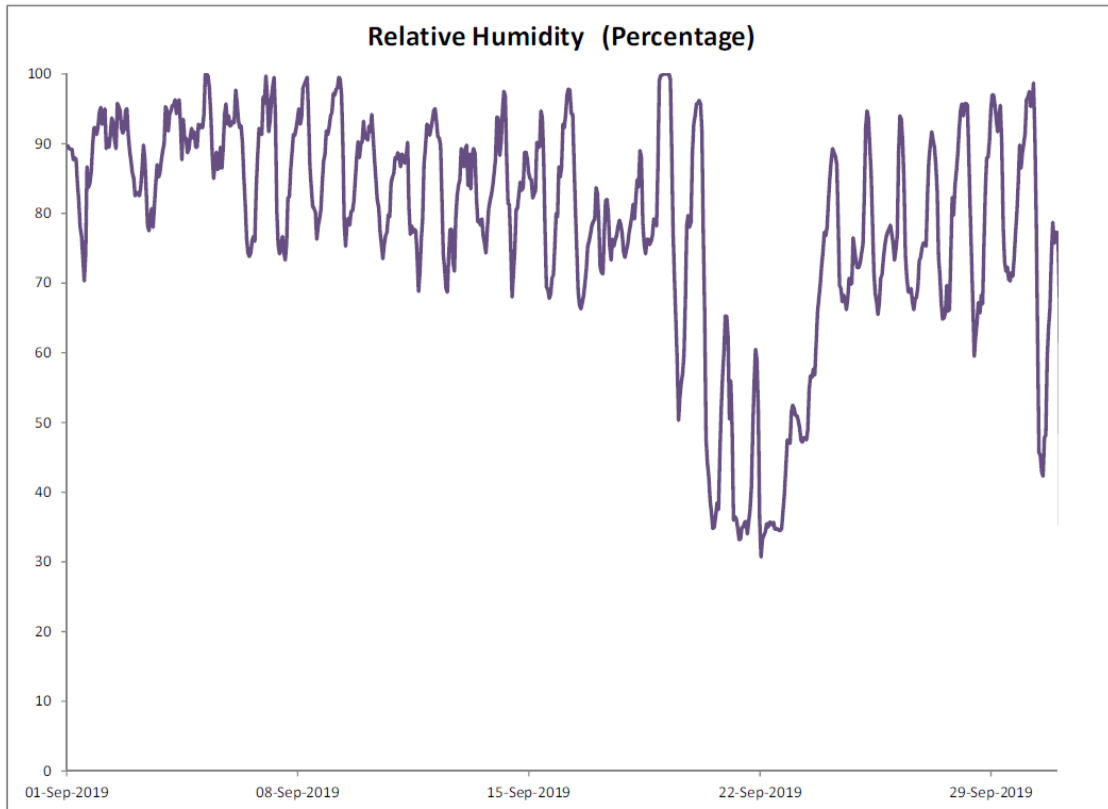


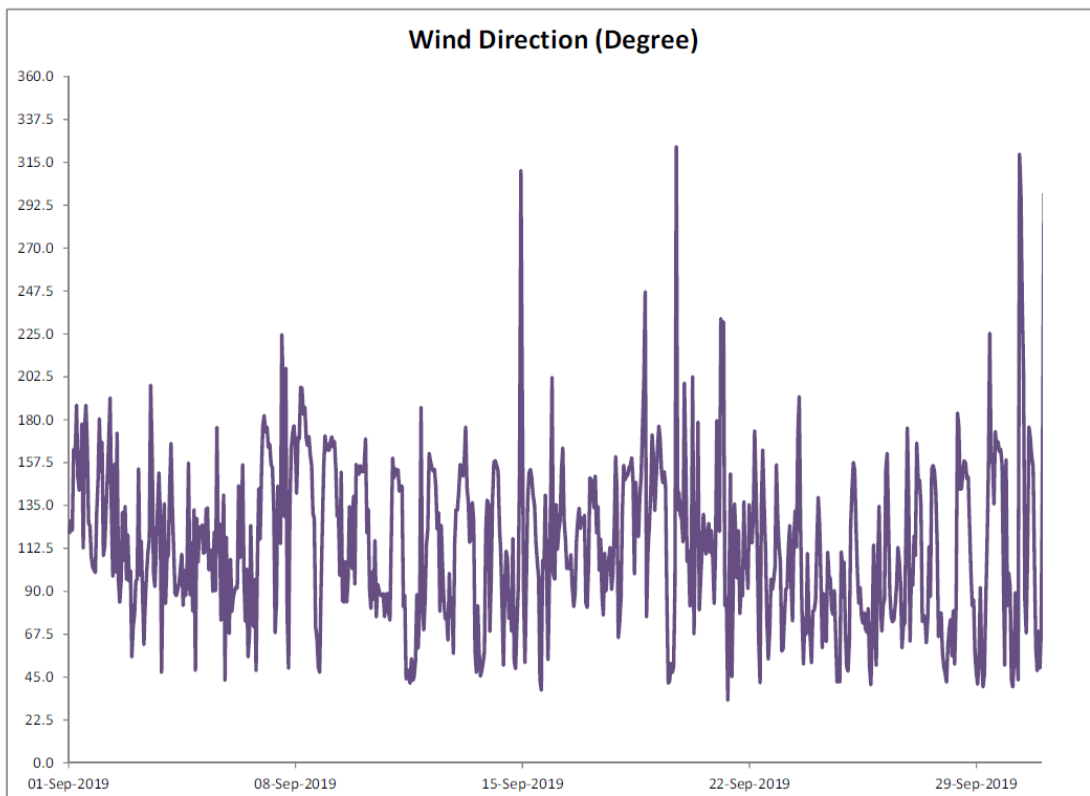
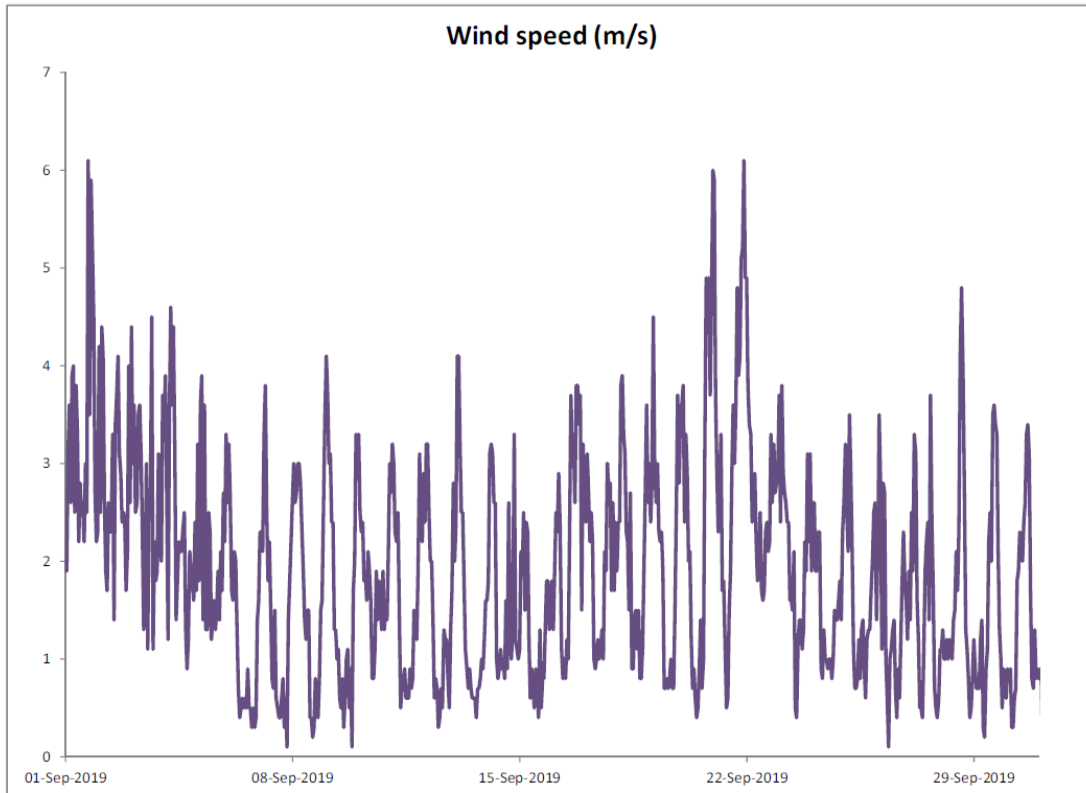
### Manual Rain Gauge Readings

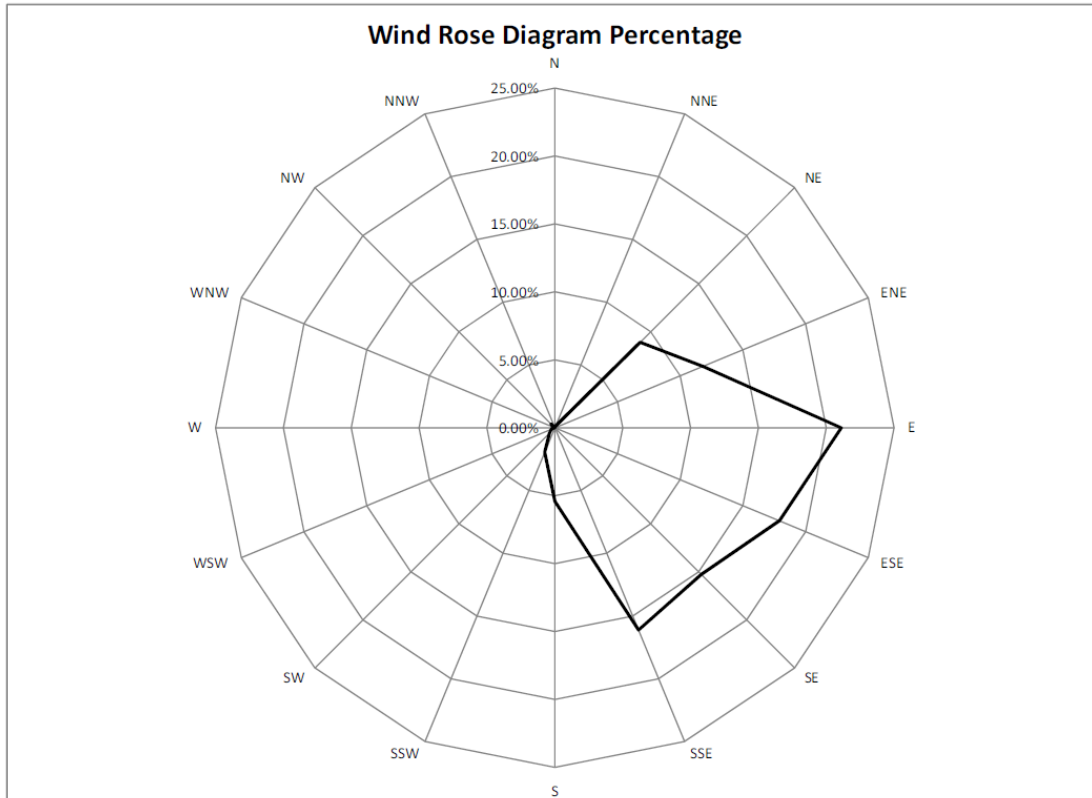
August 2019

Date	Rainfall (mm)
1 Aug 19	48.8
2 Aug 19	49.6
3 Aug 19	6.6
4 Aug 19	0.2
5 Aug 19	0.0
6 Aug 19	24.0
7 Aug 19	1.0
8 Aug 19	0.0
9 Aug 19	0.0
10 Aug 19	1.6
11 Aug 19	20.0
12 Aug 19	3.0
13 Aug 19	12.0
14 Aug 19	13.0
15 Aug 19	19.0
16 Aug 19	9.2
17 Aug 19	25.4
18 Aug 19	18.4
19 Aug 19	3.0
20 Aug 19	0.5
21 Aug 19	0.0
22 Aug 19	0.0
23 Aug 19	0.0
24 Aug 19	12.0
25 Aug 19	80.0
26 Aug 19	29.5
27 Aug 19	1.0
28 Aug 19	0.0
29 Aug 19	10.0
30 Aug 19	44.2
31 Aug 19	10.2
<b>TOTAL RAINFALL</b>	<b>442.2</b>





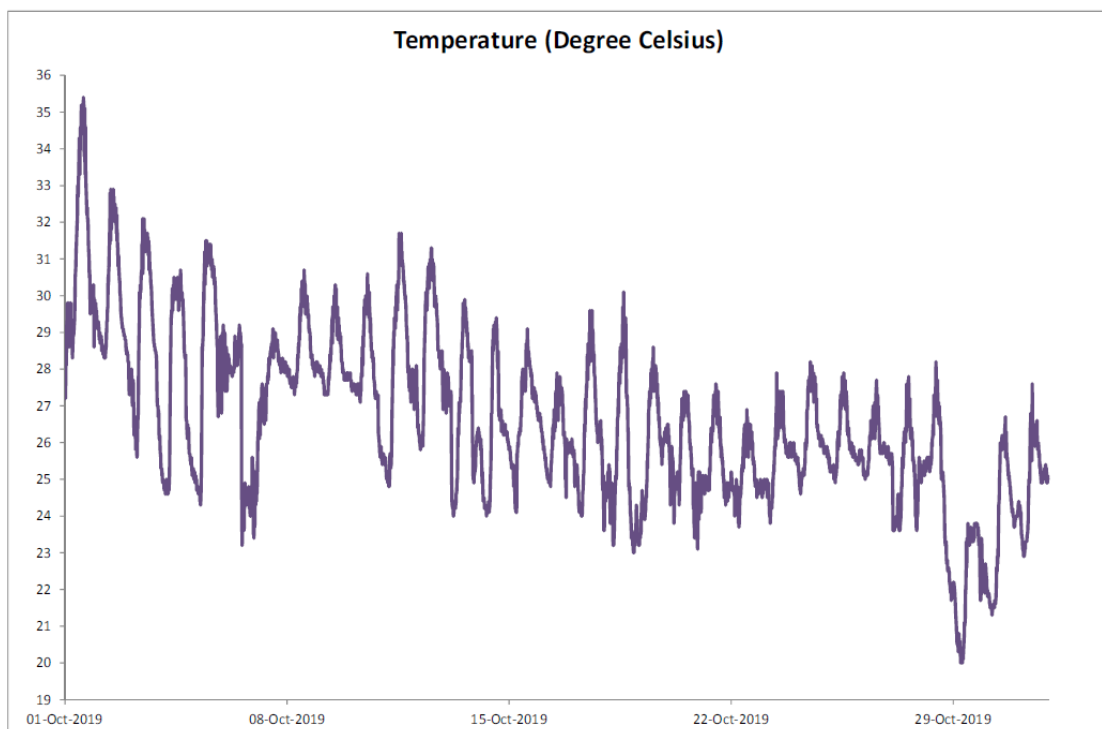
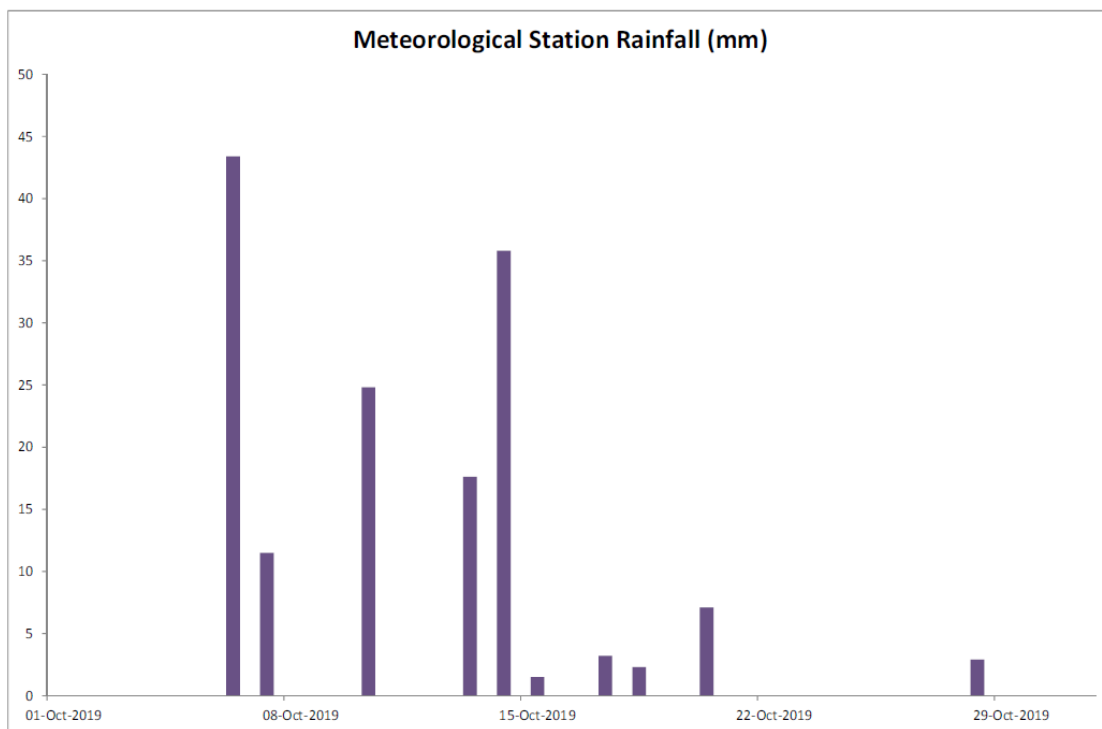




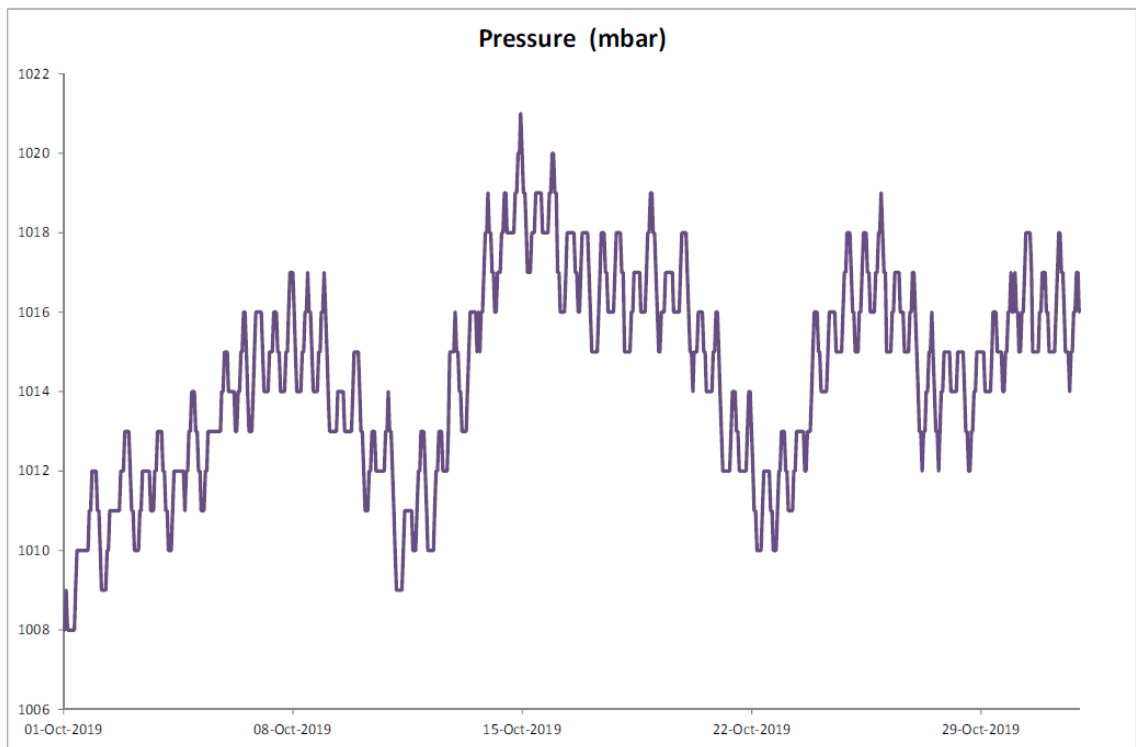
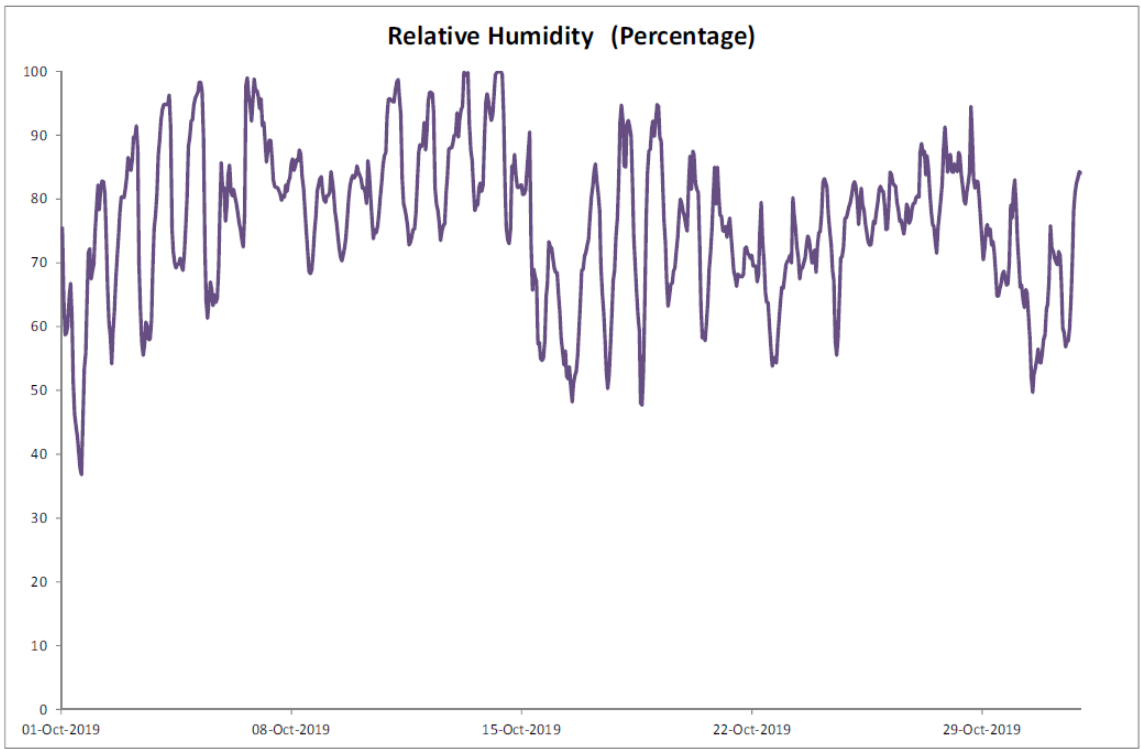
### Manual Rain Gauge Readings

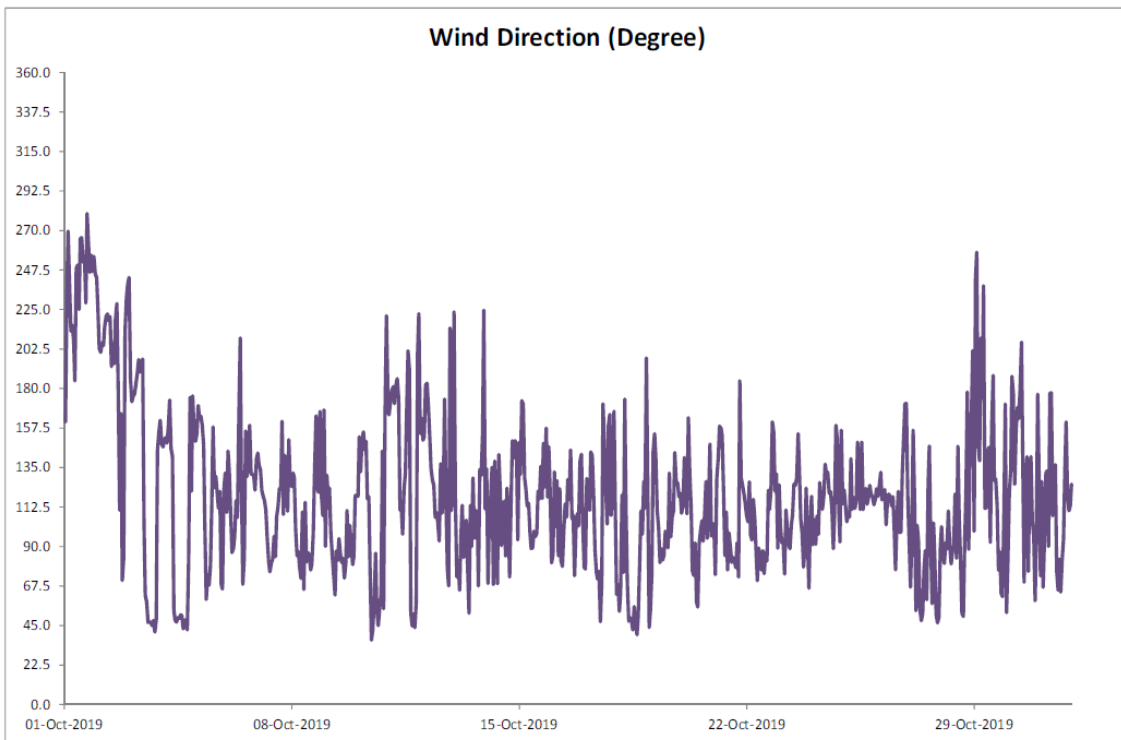
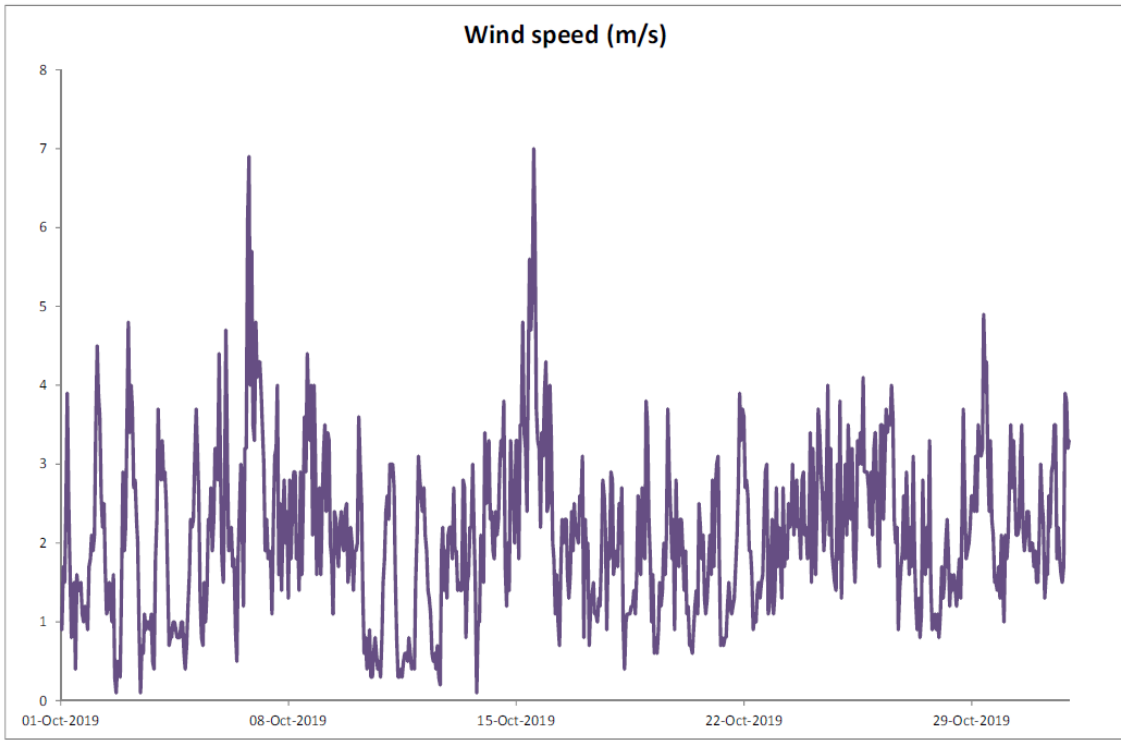
September 2019

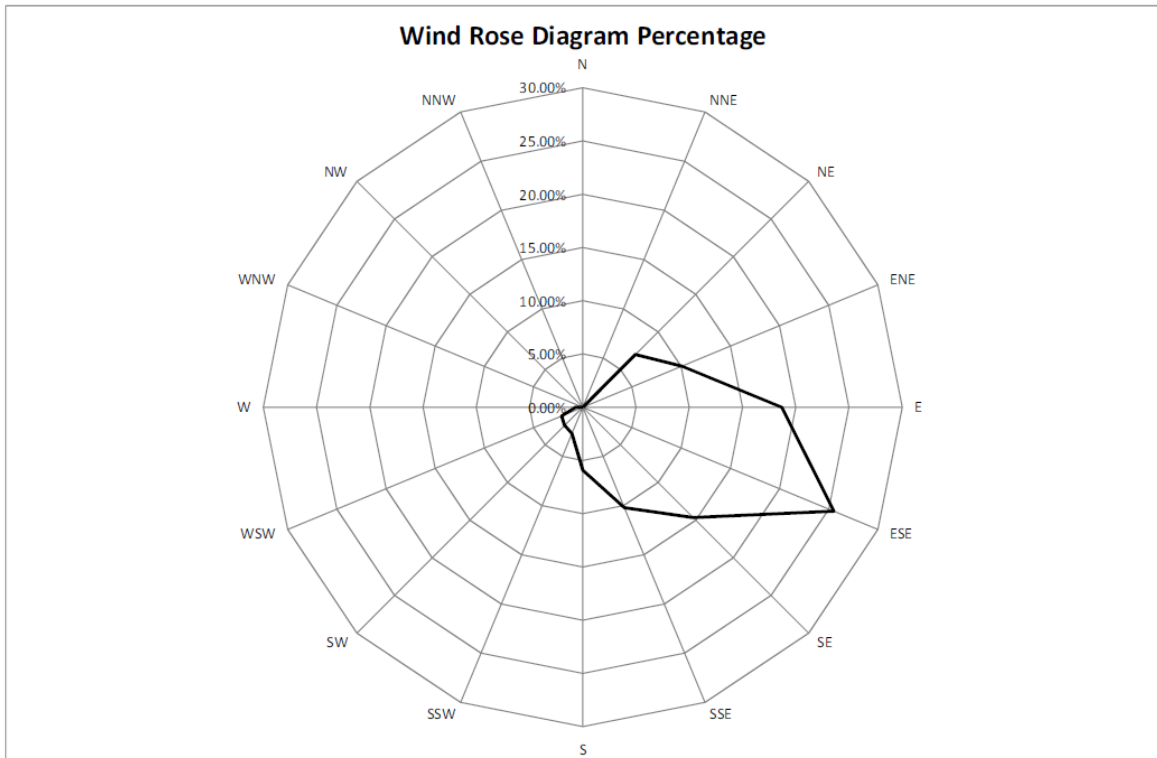
Date	Rainfall (mm)
1 Sep 19	35.4
2 Sep 19	25.8
3 Sep 19	18.0
4 Sep 19	24.0
5 Sep 19	4.0
6 Sep 19	1.0
7 Sep 19	0.0
8 Sep 19	0.0
9 Sep 19	0.0
10 Sep 19	1.2
11 Sep 19	0.0
12 Sep 19	0.0
13 Sep 19	0.0
14 Sep 19	0.4
15 Sep 19	1.2
16 Sep 19	0.0
17 Sep 19	0.0
18 Sep 19	55.2
19 Sep 19	1.0
20 Sep 19	0.0
21 Sep 19	0.0
22 Sep 19	0.0
23 Sep 19	0.0
24 Sep 19	0.0
25 Sep 19	0.3
26 Sep 19	0.0
27 Sep 19	0.0
28 Sep 19	0.0
29 Sep 19	0.0
30 Sep 19	0.0
<b>TOTAL RAINFALL</b>	<b>167.5</b>









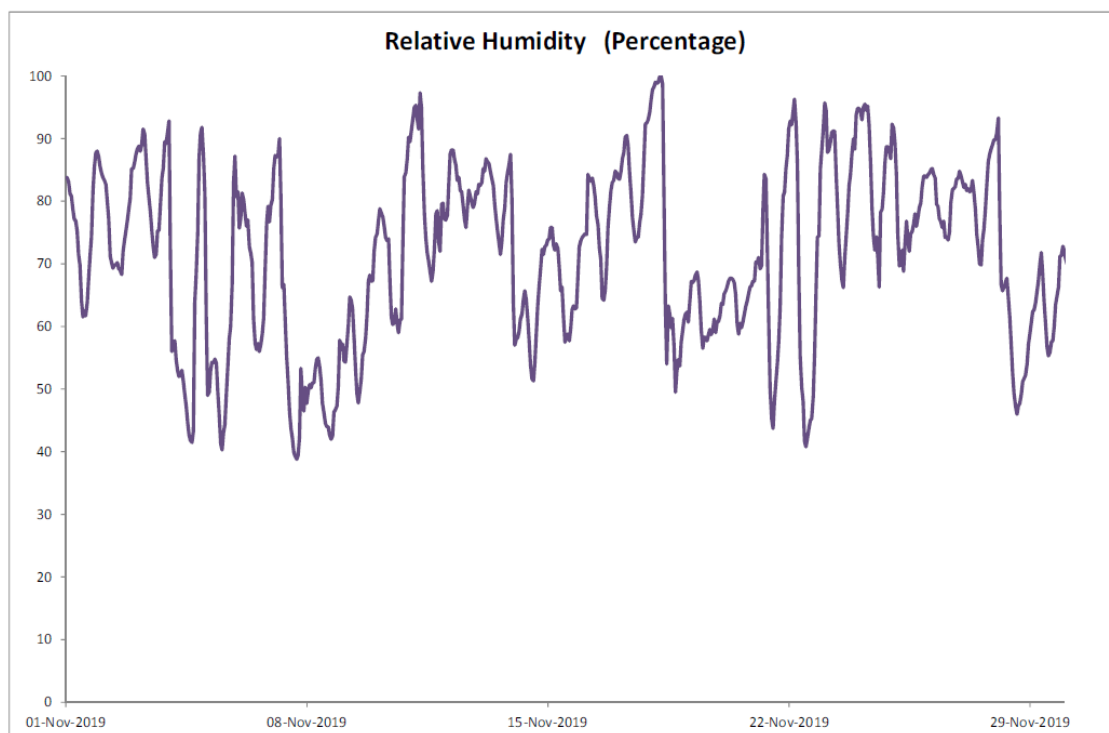
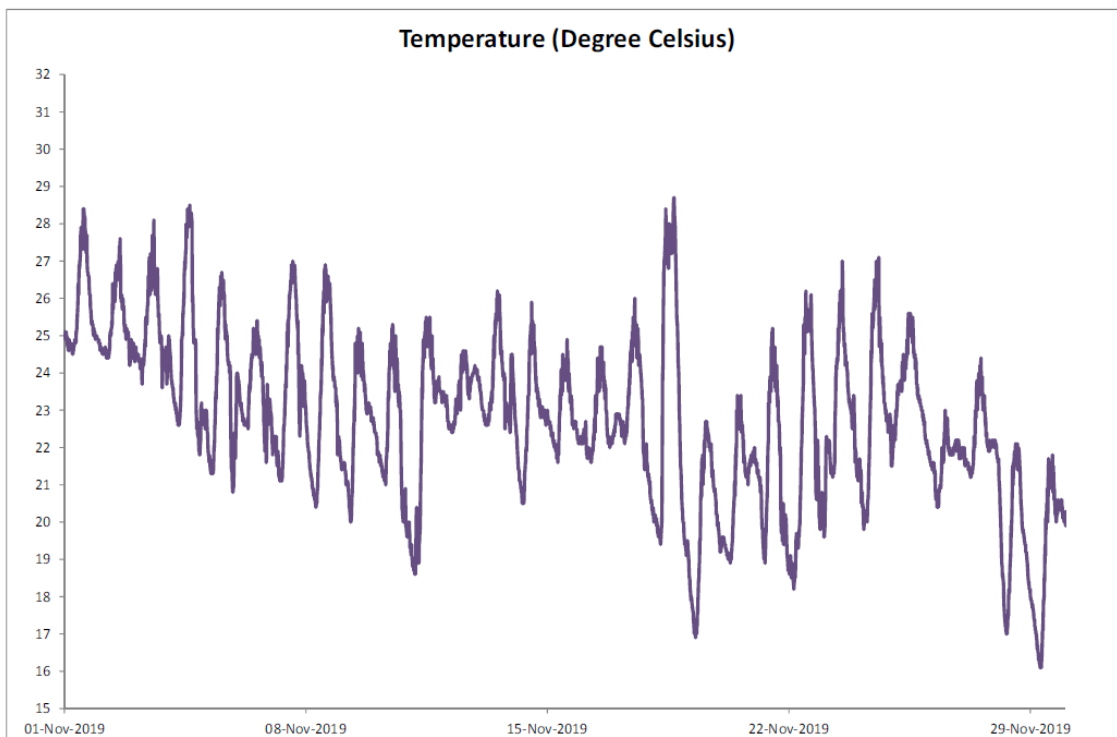


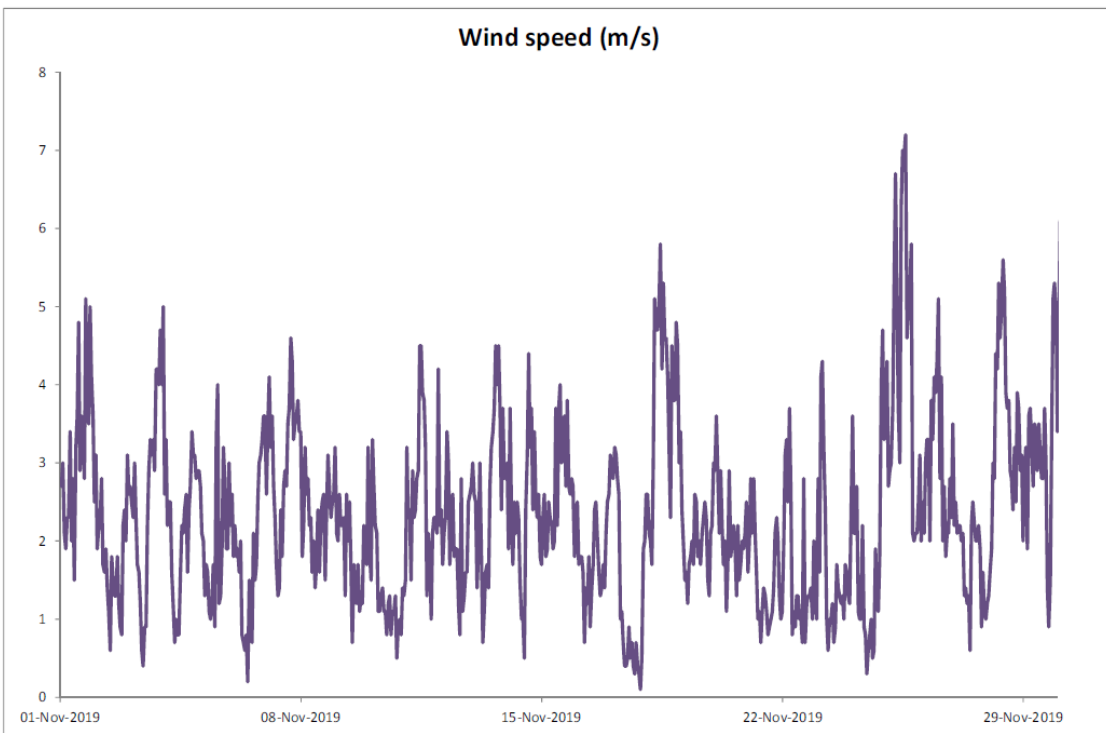
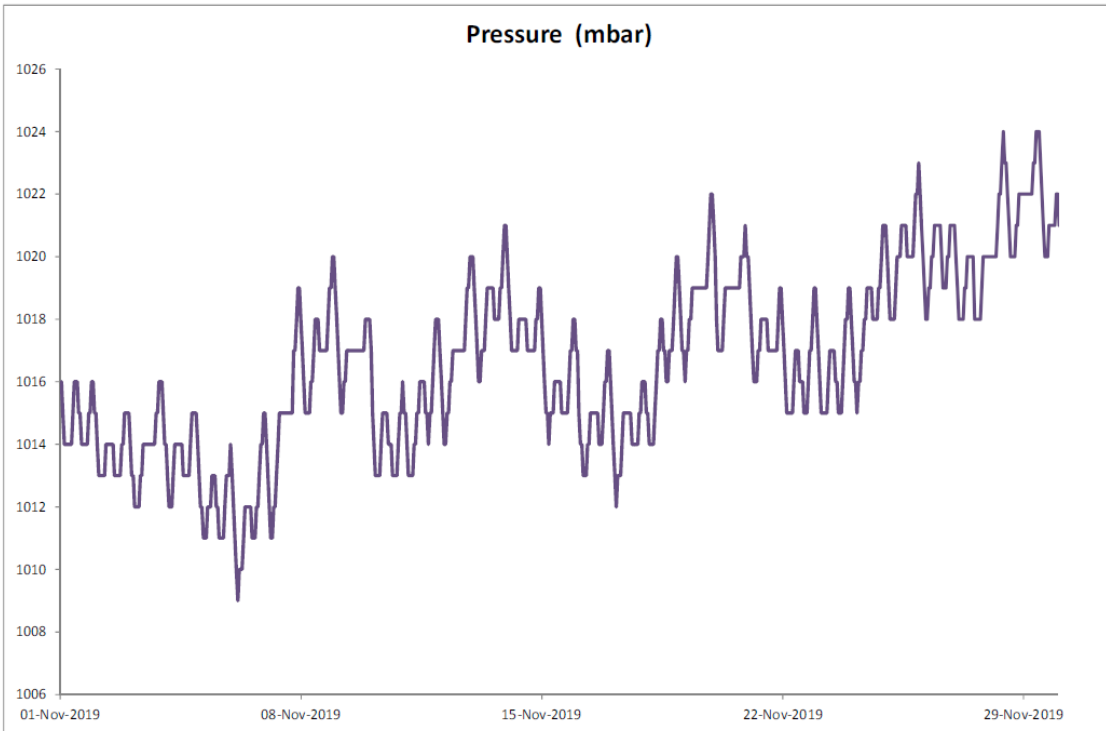
### Manual Rain Gauge Readings

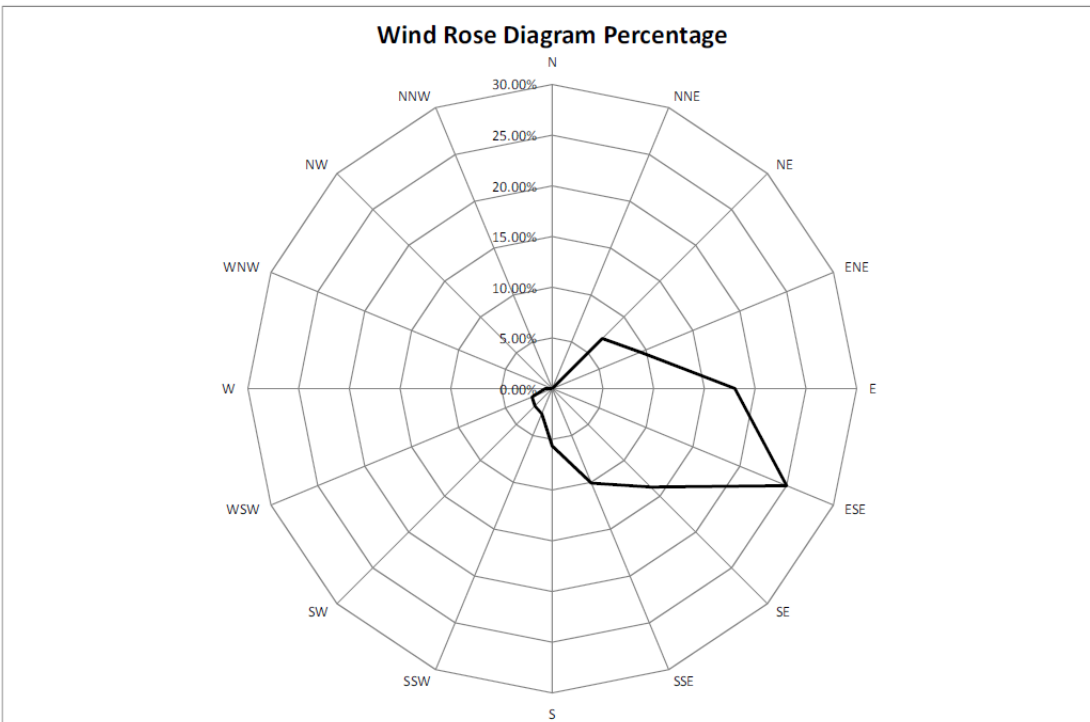
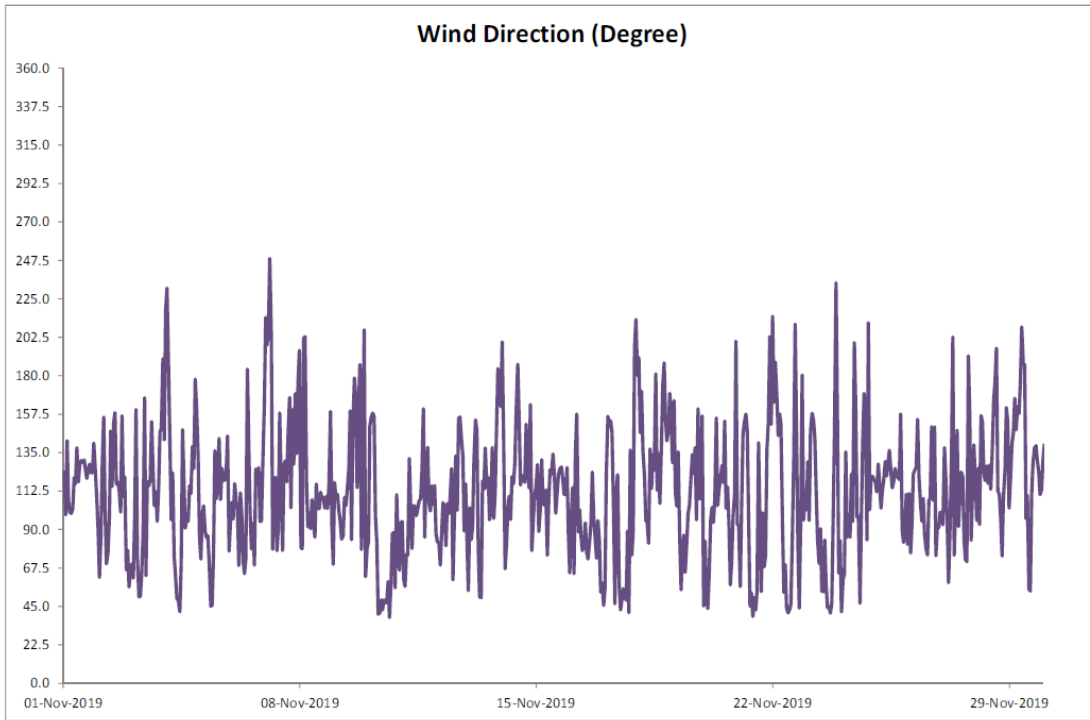
October 2019

Date	Rainfall (mm)
1/Oct/19	0.0
2/Oct/19	0.0
3/Oct/19	0.0
4/Oct/19	0.0
5/Oct/19	0.0
6/Oct/19	25.0
7/Oct/19	0.2
8/Oct/19	0.0
9/Oct/19	0.0
10/Oct/19	0.0
11/Oct/19	0.0
12/Oct/19	18.8
13/Oct/19	33.7
14/Oct/19	16.2
15/Oct/19	0.2
16/Oct/19	0.1
17/Oct/19	7.2
18/Oct/19	0.2
19/Oct/19	7.8
20/Oct/19	0.2
21/Oct/19	0.0
22/Oct/19	0.0
23/Oct/19	0.0
24/Oct/19	0.0
25/Oct/19	0.0
26/Oct/19	0.0
27/Oct/19	0.0
28/Oct/19	0.3
29/Oct/19	0.2
30/Oct/19	0.0
31/Oct/19	0.0
<b>TOTAL RAINFALL</b>	<b>110.1</b>

November 2019





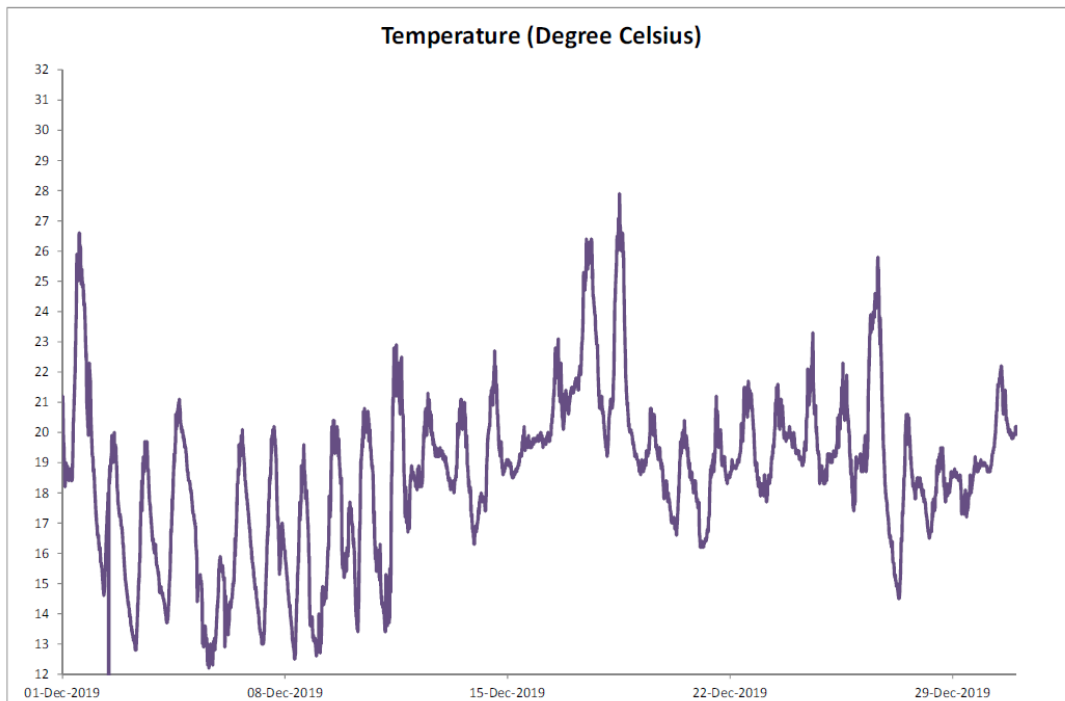


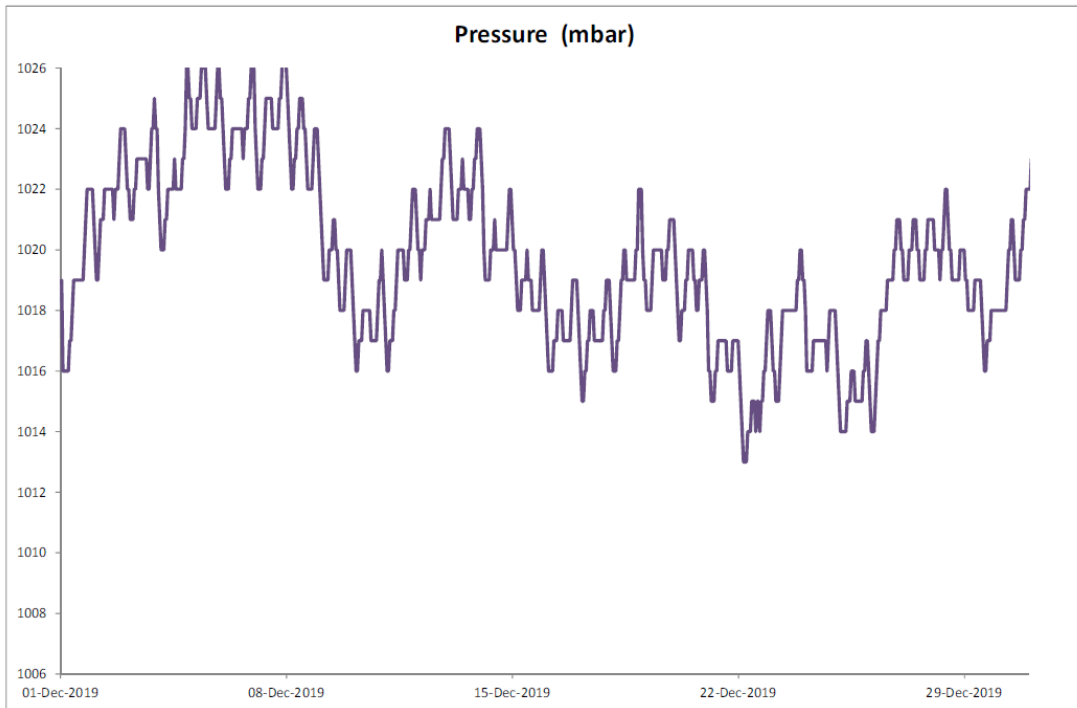
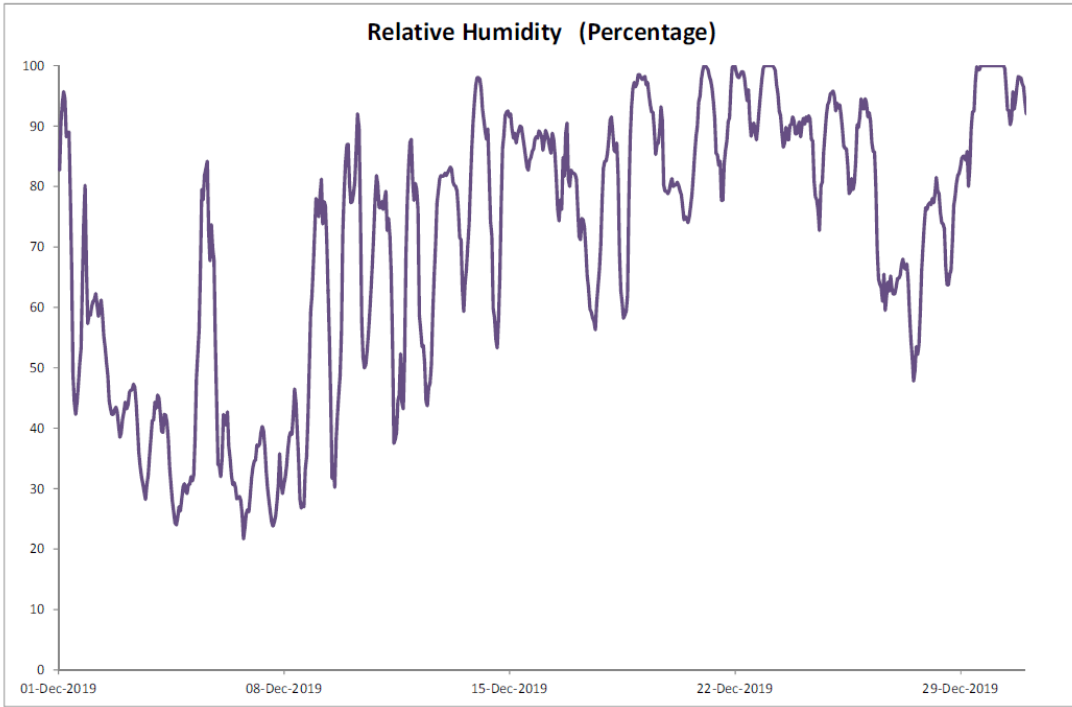
## Manual Rain Gauge Readings

November 2019

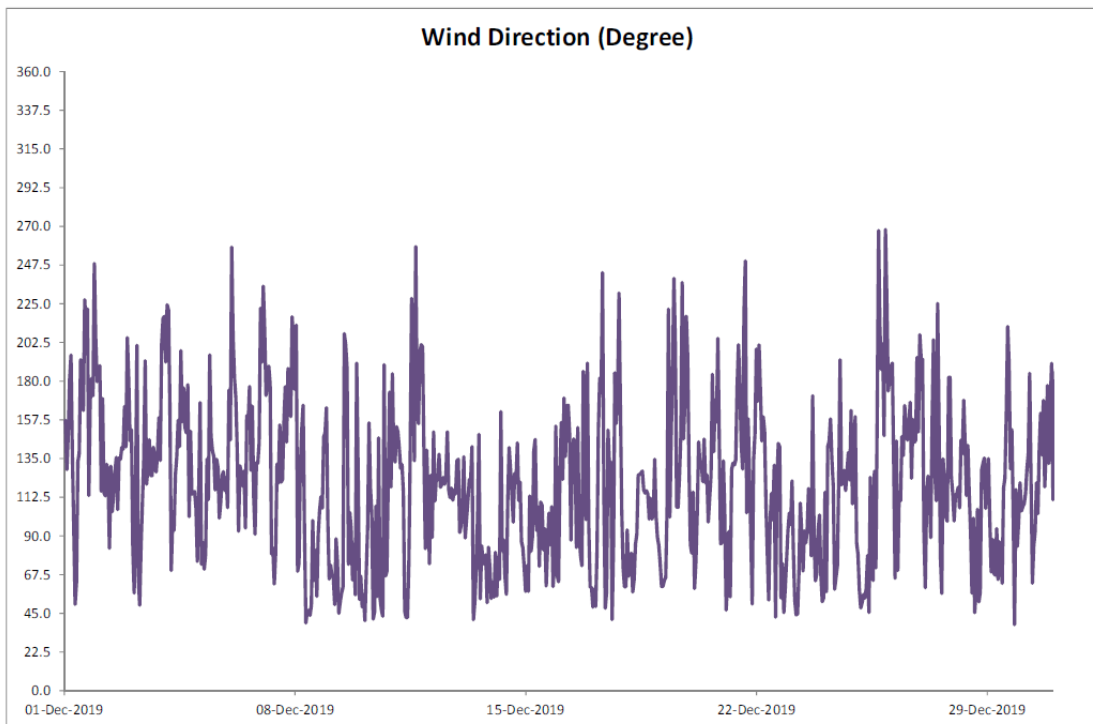
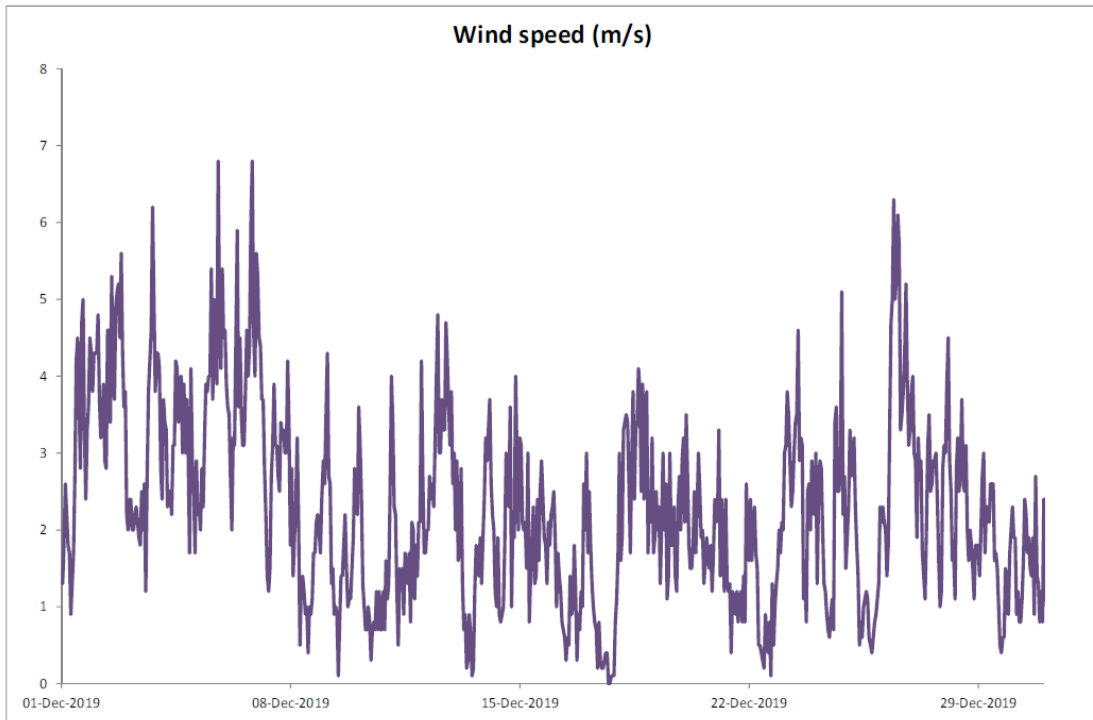
Date	Rainfall (mm)
1-Nov-19	0.0
2-Nov-19	0.0
3-Nov-19	0.0
4-Nov-19	0.0
5-Nov-19	0.0
6-Nov-19	0.0
7-Nov-19	0.0
8-Nov-19	0.0
9-Nov-19	0.0
10-Nov-19	0.0
11-Nov-19	0.0
12-Nov-19	0.0
13-Nov-19	0.0
14-Nov-19	0.0
15-Nov-19	0.0
16-Nov-19	0.0
17-Nov-19	0.0
18-Nov-19	0.0
19-Nov-19	0.0
20-Nov-19	0.0
21-Nov-19	0.0
22-Nov-19	0.0
23-Nov-19	0.0
24-Nov-19	0.0
25-Nov-19	0.0
26-Nov-19	0.0
27-Nov-19	0.0
28-Nov-19	0.0
29-Nov-19	0.0
30-Nov-19	0.0
<b>TOTAL RAINFALL</b>	<b>0.0</b>

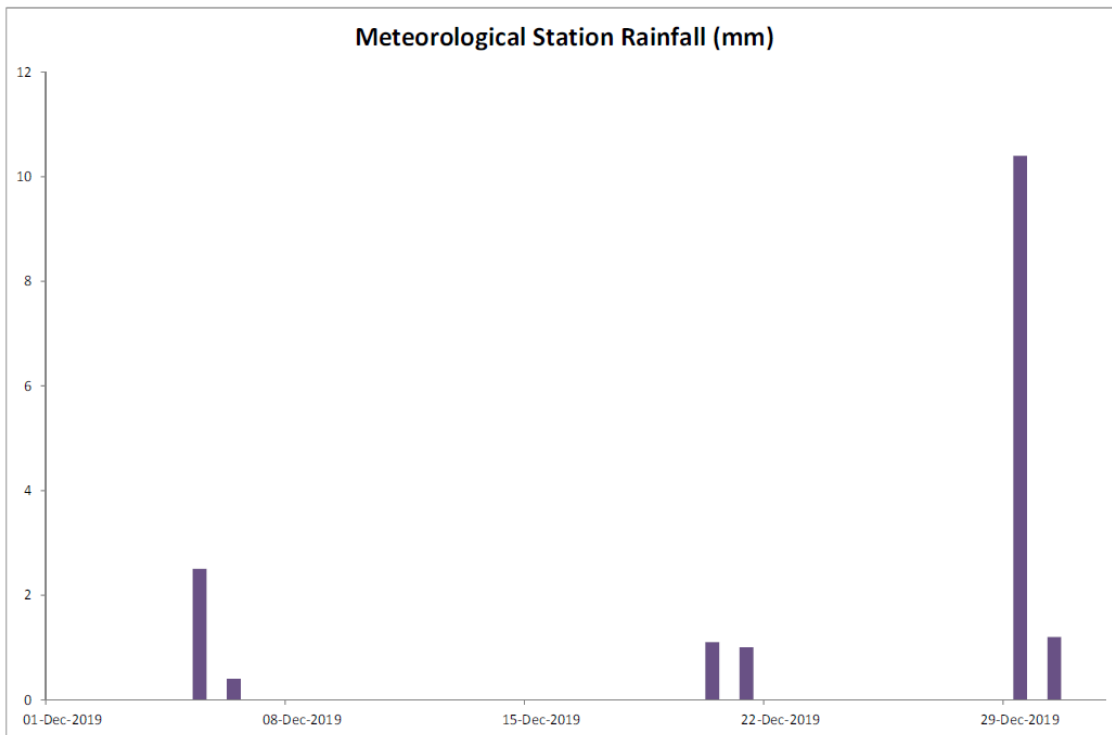
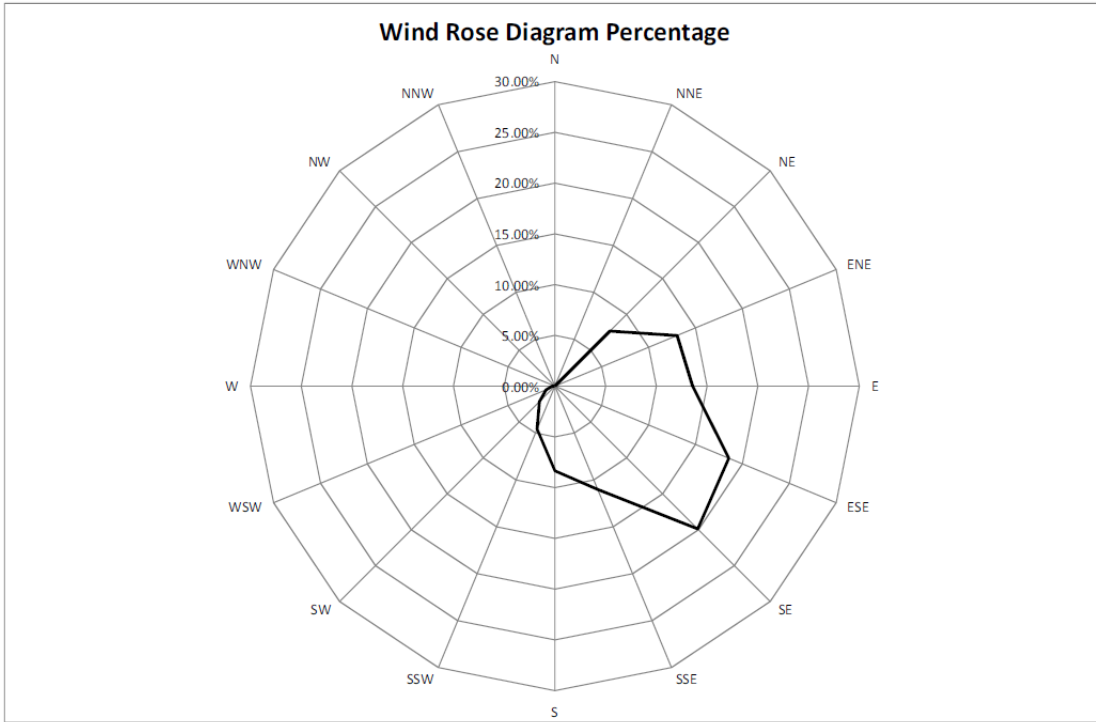
## December 2019











## Manual Rain Gauge Readings

December 2019

Date	Rainfall (mm)
1 Dec 19	0.0
2 Dec 19	0.0
3 Dec 19	0.0
4 Dec 19	0.0
5 Dec 19	3.6
6 Dec 19	0.0
7 Dec 19	0.0
8 Dec 19	0.0
9 Dec 19	0.0
10 Dec 19	0.0
11 Dec 19	0.0
12 Dec 19	0.0
13 Dec 19	0.0
14 Dec 19	0.0
15 Dec 19	0.0
16 Dec 19	0.0
17 Dec 19	0.0
18 Dec 19	0.1
19 Dec 19	0.0
20 Dec 19	2.8
21 Dec 19	0.4
22 Dec 19	0.2
23 Dec 19	0.0
24 Dec 19	0.0
25 Dec 19	0.0
26 Dec 19	0.0
27 Dec 19	0.0
28 Dec 19	0.0
29 Dec 19	15.0
30 Dec 19	0.2
31 Dec 19	0.2
<b>TOTAL RAINFALL</b>	<b>22.5</b>